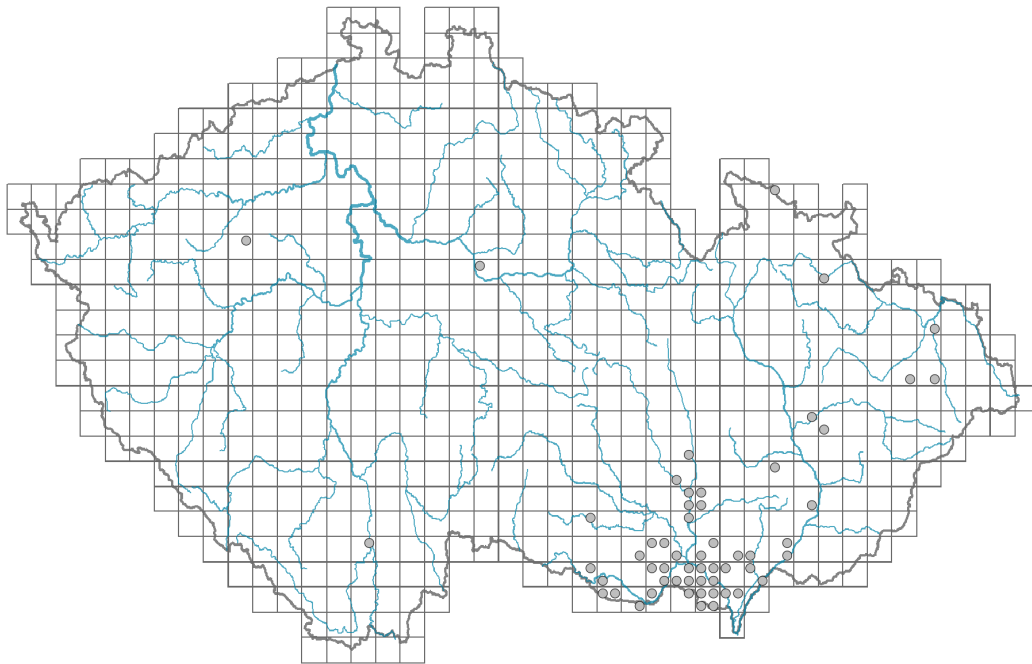


Cannabis sativa var. *spontanea*

Distribution



Map info

● revised records

○ unrevised records

On the map are not visualized records without the coordinates and records marked as incorrect or doubtful.

Habitus and growth type

Height [m]: **0.3-1.5**

Life form: **therophyte**

Leaf

Leaf presence and metamorphosis: **leaves present, not modified**

Leaf arrangement (phyllotaxis): **alternate, opposite**

Leaf shape: **compound - ternate, compound - palmate (5-foliate), compound - palmate (7-foliate)**

Stipules: **present**

Petiole: **present**

Flower

Flowering period [month]: **June-September**

Flower colour: **green**

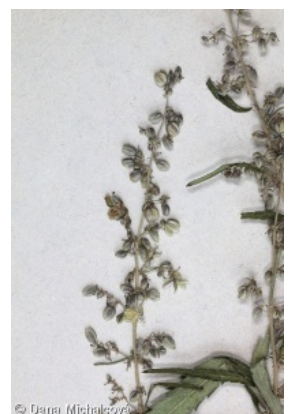
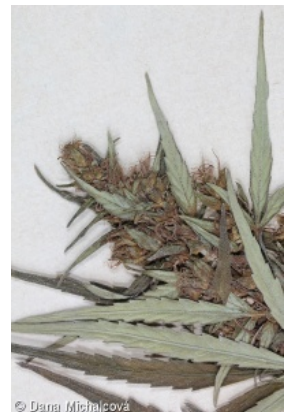
Flower symmetry: **actinomorphic**

Perianth type: **homochlamydeous, sometimes reduced or absent**

Perianth fusion: **free, fused**

Inflorescence type: **panicula e floribus masculis composita, pseudospica e floribus masculis composita**

Generative reproduction type: **allogamy**



Fruit, seed and dispersal

Fruit type: **dry fruit - achene/cypsela/samara**

Fruit colour: **brown**

Dispersal unit (diaspore): **fruit, infrutescence or its part**

Dispersal strategy: **Allium (mainly autochory)**

Myrmecochory: **non-myrmecochorous (b)**

Trophic mode

Parasitism and mycoheterotrophy: **autotrophic**

Carnivory: **non-carnivorous**

Symbiotic nitrogen fixation: **no nitrogen-fixing symbionts**

Karyology

Chromosome number (2n): **20**

Ploidy level (x): **2**

2C genome size [Mbp]: **1469.95**

1Cx monoploid genome size [Mbp]: **734.98**

Genomic GC content: **36.1 %**

Taxon origin

Origin in the Czech Republic: **neophyte**

Invasion status: **invasive**

Geographic origin: **Europe, Mediterranean, Asia**

Year of the first record in the wild: **1868**

Period of introduction: **Late Modern Period (1800-1950)**

Introduction pathway: **unintentional - agriculture, unintentional - anthropogenic**

Ecological indicator values

Ellenberg-type indicator values

Light indicator value: **7 - half-light plant, mostly occurring at full light, but also in the shade up to about 30% of diffuse radiation incident in an open area**

Temperature indicator value: **7 - heat indicator, occurring in relatively warm lowlands**

Moisture indicator value: **6 - transition between values 5 and 7**

Reaction indicator value: **6 - transition between values 5 and 7**

Nutrient indicator value: **7 - occurring at nutrient-rich sites more often than at average sites and only exceptionally at poor sites**

Salinity indicator value: **1 - salt tolerant, mostly on low-salt to salt-free soils, but occasionally on slightly salty soils**

Habitat and sociology

Occurrence in habitats

13 Anthropogenic vegetation



13A Annual vegetation of ruderal habitats: **2 - optimum**

13B Annual vegetation of arable land: **1 - rare occurrence**

Affinity to the forest environment

Affinity to the forest environment in Thermophyticum: **0 - taxon that does not spontaneously occur in Czech forests**

Affinity to the forest environment in Mesophyticum and Oreophyticum: **0 - taxon that does not spontaneously occur in Czech forests**

Distribution and frequency

Elevational belt in the Czech Republic: **lowlands, colline belt**

Occurrence frequency in the basic grid mapping cells and quadrants of the basic grid mapping cells: 38

taxon.data.freq_in_quad: 56

Number of habitats with taxon occurrence in the Czech Republic

Number of narrow habitats in which the taxon occurs: **2**

Number of narrow habitats in which the taxon has its optimum: **1**

Number of broad habitats in which the taxon occurs: **1**

Number of broad habitats in which the taxon has its optimum: **1**

Threats and protection

Red List 2017 (national categories): **taxon is not on the Red List**

Red List 2017 (IUCN categories): **LC(NA) - least concern (taxon is not on the Red List)**

Legal protection: **not protected by law**