

Carex muricata agg.

Distribution



Map info

● revised records

● unrevised records

On the map are not visualized records without the coordinates and records marked as incorrect or doubtful.



Habitus and growth type

Height [m]: **0.1-1.2**

Growth form: **clonal herb**

Life form: **hemicryptophyte**

Life strategy: **C - competitor, CS - competitor/stress-tolerator**

Leaf

Leaf presence and metamorphosis: **leaves present, not modified**

Leaf arrangement (phyllotaxis): **alternate**

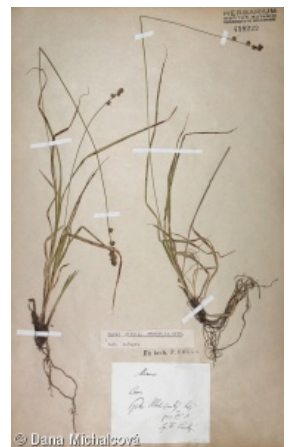
Leaf shape: **simple - entire**

Stipules: **absent**

Petiole: **absent**

Leaf life span: **evergreen**

Leaf anatomy: **mesomorphic**



Flower

Flowering period [month]: **May-July**

Flowering phase: **4 Fagus sylvatica-Galeobdolon (start of mid-spring)**

Flower colour: **green**

Perianth type: **flower achlamydeous**

Inflorescence type: **spica e spiculis composita**

Dicliny: **monoecious**

Generative reproduction type: **facultative allogamy, mixed mating**

Pollination syndrome: **wind-pollination**

Fruit, seed and dispersal

Fruit type: **dry fruit - nut enclosed in an utricle**

Fruit colour: **brown**

Reproduction type: **by seed/spores and vegetatively, mostly by seed/spores, rarely vegetatively**

Dispersal unit (diaspore): **fruit, infrutescence or its part**

Dispersal strategy: **Allium (mainly autochory)**

Myrmecochory: **probably non-myrmecochorous, non-myrmecochorous (a)**

Belowground organs and clonality

Shoot metamorphosis: **rhizome**

Storage organ: **rhizome, tuft**

Type of clonal growth organ: **epigeogenous rhizome**

Freely dispersible organs of clonal growth: **absent**

Shoot life span (cyclicity): **dicyclic or polycyclic shoots prevailing**

Branching type of stem-derived organs of clonal growth: **sympodial**

Primary root: **absent**

Persistence of the clonal growth organ [year]: **4**

Number of clonal offspring: **6**

Lateral spreading distance by clonal growth [m]: **0.27**

Clonal index: **6**

Bud bank

Number of buds per shoot at the soil surface (root buds excluded): **5**

Number of buds per shoot at a depth of 0–10 cm (root buds excluded): **15**

Number of buds per shoot at a depth greater than 10 cm (root buds excluded): **0**

Size of the belowground bud bank (root buds excluded): **20**

Depth of the belowground bud bank (root buds excluded) [cm]: **4**

Number of buds per shoot at the soil surface (root buds included): **5**

Number of buds per shoot at a depth of 0–10 cm (root buds included): **15**

Number of buds per shoot at a depth greater than 10 cm (root buds included): **0**

Size of the belowground bud bank (root buds included): **20**

Depth of the belowground bud bank (root buds included) [cm]: **4**

Trophic mode

Parasitism and mycoheterotrophy: **autotrophic**

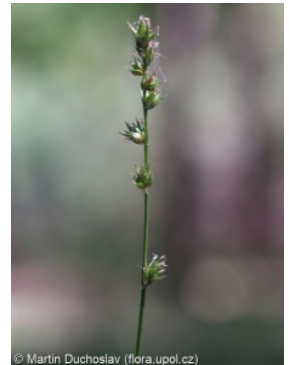
Carnivory: **non-carnivorous**

Symbiotic nitrogen fixation: **no nitrogen-fixing symbionts**

Karyology

Chromosome number (2n): **54, 56, 57**

Ploidy level (x): **2**



2C genome size [Mbp]: **771.2**
 1Cx monoploid genome size [Mbp]: **385.6**

Taxon origin

Origin in the Czech Republic: **native**

Ecological indicator values

Ellenberg-type indicator values

Light indicator value: **5 - semi-shade plant, only exceptionally occurring in full light, but usually at more than 10% of the diffuse radiation incident in an open area**

Temperature indicator value: **5 - moderate heat indicator, occurring from lowland to montane belt, mainly in submontane-temperate areas**

Moisture indicator value: **5 - indicator of fresh soils, focus on soils of average moisture, missing on wet and on soils that frequently dry out**

Reaction indicator value: **6x - transition between values 5 and 7 (generalist)**

Nutrient indicator value: **5 - occurring at moderately nutrient-rich sites, and less frequently at poor and rich sites**

Salinity indicator value: **0 - not salt tolerant, glycophyte**

Indicator values for disturbance

Whole-community disturbance frequency indicator value: **-1.72**

Herb layer disturbance frequency indicator value: **-0.74**

Whole-community disturbance severity indicator value: **0.31**

Herb layer disturbance severity indicator value: **0.21**

Whole-community structure based disturbance indicator value: **0.23**

Herb layer structure-based disturbance indicator value: **0.33**

Habitat and sociology

Occurrence in habitats

1 Vegetation of cliffs, screes and walls

1B Siliceous cliffs and block fields: **1 - rare occurrence**

1D Mobile calcareous screes: **1 - rare occurrence**

4 Wetland and riverine herbaceous vegetation

4I Vegetation of nitrophilous annual hygrophilous herbs: **1 - rare occurrence**

4J River gravel banks: **1 - rare occurrence**

4K Petasites fringes of montane brooks: **1 - rare occurrence**

4L Nitrophilous herbaceous fringes of lowland rivers: **1 - rare occurrence**

5 Vegetation of springs and mires

5B Lowland to montane soft-water springs: **1 - rare occurrence**

5D Calcareous fens: **1 - rare occurrence**

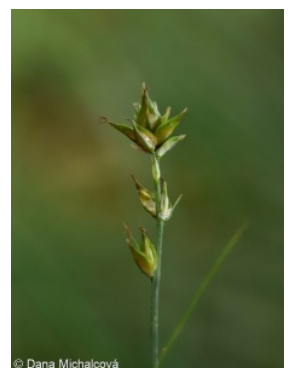
6 Meadows and mesic pastures

6A Mesic Arrhenatherum meadows: **2 - optimum**

6C Pastures and park grasslands: **2 - optimum**

6D Alluvial meadows of lowland rivers: **1 - rare occurrence**

6E Wet Cirsium meadows: **1 - rare occurrence**



6F Intermittently wet Molinia meadows: **1 - rare occurrence**

6G Vegetation of wet disturbed soils: **2 - optimum**

7 Acidophilous grasslands

7B Submontane Nardus grasslands: **1 - rare occurrence**

8 Dry grasslands

8A Hercynian dry grasslands on rock outcrops: **1 - rare occurrence**

8B Submediterranean dry grasslands on rock outcrops: **1 - rare occurrence**

8D Broad-leaved dry grasslands: **1 - rare occurrence**

8E Acidophilous dry grasslands: **1 - rare occurrence**

8F Thermophilous forest fringe vegetation: **2 - optimum**

9 Sand grasslands and rock-outcrop vegetation

9B Open vegetation of acidic sands: **1 - rare occurrence**

9C Festuca grasslands on acidic sands: **1 - rare occurrence**

10 Saline vegetation

10I Inland saline meadows: **1 - rare occurrence**

11 Heathlands and scrub

11A Dry lowland to subalpine heathlands: **1 - rare occurrence**

11J Willow galleries of loamy and sandy river banks: **1 - rare occurrence**

11L Tall mesic and xeric shrub: **2 - optimum**

11N Low xeric scrub: **2 - optimum**

11R Scrub and pioneer woodland of forests clearings: **2 - optimum**

12 Forests

12B Alluvial forests: **1 - rare occurrence**

12C Oak-hornbeam forests: **2 - optimum**

12D Ravine forests: **2 - optimum**

12E Herb-rich beech forests: **2 - optimum**

12F Limestone beech forests: **2 - optimum**

12G Acidophilous beech forests: **1 - rare occurrence**

12H Peri-Alpidic basiphilous thermophilous oak forests: **2 - optimum**

12I Sub-continental thermophilous oak forests: **2 - optimum**

12J Acidophilous thermophilous oak forests: **2 - optimum**

12K Acidophilous oak forests: **1 - rare occurrence**

12T Robinia pseudacacia plantations: **2 - optimum**

12U Plantations of broad-leaved non-native trees: **2 - optimum**

12V Spruce plantations: **1 - rare occurrence**

12W Pine and larch plantations: **1 - rare occurrence**

13 Anthropogenic vegetation

13D Perennial thermophilous ruderal vegetation: **1 - rare occurrence**

13E Perennial nitrophilous herbaceous vegetation of mesic sites: **1 - rare occurrence**

13F Herbaceous vegetation of forests clearings and Rubus scrub: **2 - optimum**

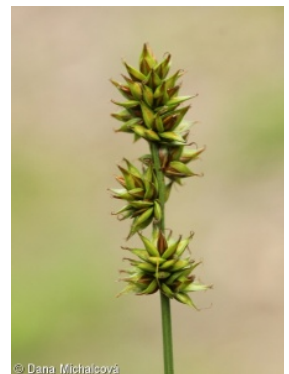
Diagnostic taxon

Diagnostic taxon of alliances: [LCB *Aceri tatarici-Quercion*](#)

Diagnostic taxon of associations: [LBB04 *Primulo veris-Carpinetum betuli*](#), [LCB01 *Quercetum pubescenti-roboris*](#)

Constant taxon

Constant taxon of associations: [LBB04 *Primulo veris-Carpinetum betuli*](#), [LCB01](#)



Quercetum pubescenti-roboris**Ecological specialization indices**Ecological specialization index for all vegetation types: **3.8**Ecological specialization index for non-forest vegetation: **3.8**Ecological specialization index for forest vegetation: **4.8****Colonization ability**Index of colonization success (ICS): **6**Index of colonization potential (ICP): **7**Optimum successional age [years]: **5****Distribution and frequency**Floristic zone: **northern temperate, southern temperate, submeridional, meridional**Floristic region: **Europe, Western Asia**Elevational belt in the Czech Republic: **lowlands, colline belt, submontane belt, montane belt**

Occurrence frequency in the basic grid mapping cells and quadrants of the basic grid mapping cells: 640

taxon.data.freq_in_quad: 2033

Commonness in vegetation plots from the Czech RepublicOccurrence frequency in vegetation plots: **1.4 %**Occurrence frequency in vegetation plots with a cover above 5%: **0.7 %**Occurrence frequency in vegetation plots with a cover above 25%: **0 %**Occurrence frequency in vegetation plots with a cover above 50%: **0 %**Mean percentage cover in vegetation plots: **1.9 %**Maximum percentage cover in vegetation plots: **13 %****Number of habitats with taxon occurrence in the Czech Republic**Number of narrow habitats in which the taxon occurs: **45**Number of narrow habitats in which the taxon has its optimum: **17**Number of broad habitats in which the taxon occurs: **11**Number of broad habitats in which the taxon has its optimum: **5**

