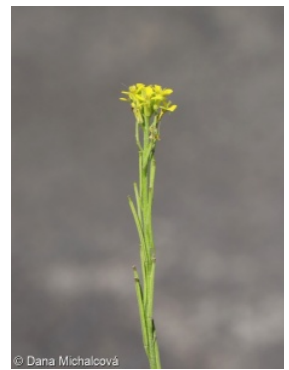
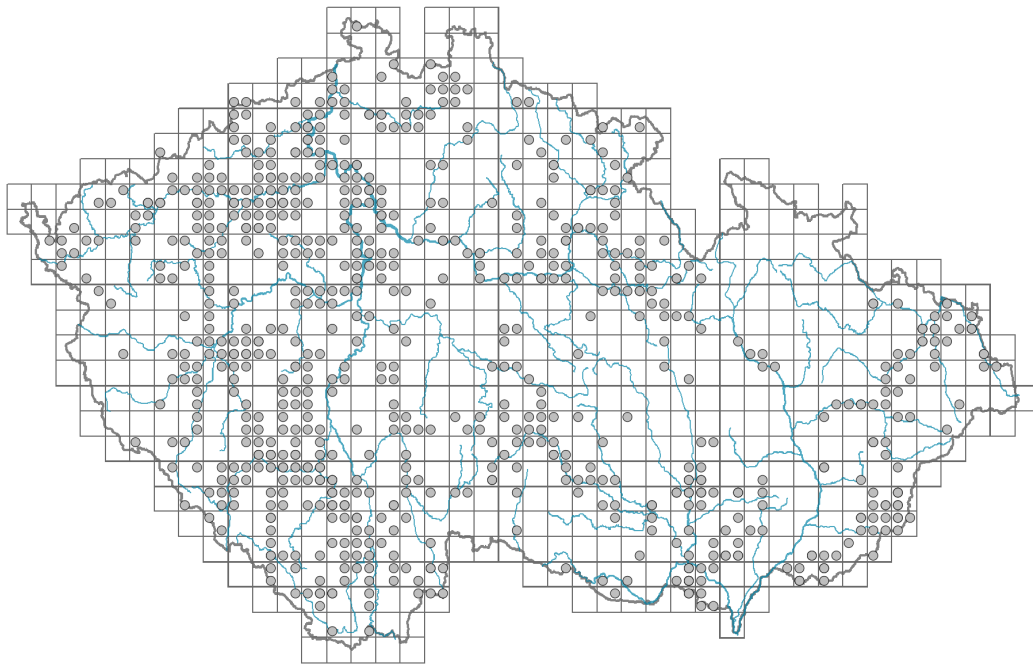


Erysimum virgatum agg.

Distribution



© Dana Michalcová

Map info

● revised records

○ unrevised records

On the map are not visualized records without the coordinates and records marked as incorrect or doubtful.

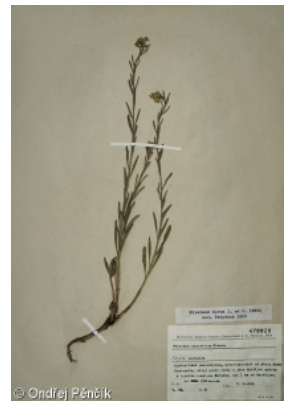
Habitus and growth type

Height [m]: **0.5-1.2**

Growth form: **monocarpic perennial non-clonal herb**

Life form: **hemicryptophyte**

Life strategy: **CSR - competitor/stress-tolerator/ruderal**



© Ondřej Pěnčík

Leaf

Leaf presence and metamorphosis: **leaves present, not modified**

Leaf arrangement (phyllotaxis): **alternate, rosulate**

Leaf shape: **simple - entire**

Stipules: **absent**

Petiole: **absent**

Flower

Flowering period [month]: **May-August**

Flower colour: **yellow**

Flower symmetry: **actinomorphic**

Perianth type: **calyx and corolla**

Perianth fusion: **free**

Calyx fusion: **aposepalous**

Inflorescence type: **racemus**



© Dana Michalcová

Dicliny: **synoecious**

Pollination syndrome: **insect-pollination, selfing**

Fruit, seed and dispersal

Fruit type: **dry fruit - siliqua**

Fruit colour: **brown**

Reproduction type: **only by seed/spores**

Dispersal unit (diaspore): **seed**

Dispersal strategy: **Allium (mainly autochory)**

Myrmecochory: **non-myrmecochorous (b)**

Belowground organs and clonality

Shoot life span (cyclicity): **dicyclic or polycyclic shoots prevailing**

Primary root: **present**

Bud bank

Number of buds per shoot at the soil surface (root buds excluded): **5**

Number of buds per shoot at a depth of 0–10 cm (root buds excluded): **6**

Number of buds per shoot at a depth greater than 10 cm (root buds excluded): **0**

Size of the belowground bud bank (root buds excluded): **11**

Depth of the belowground bud bank (root buds excluded) [cm]: **3**

Number of buds per shoot at the soil surface (root buds included): **5**

Number of buds per shoot at a depth of 0–10 cm (root buds included): **6**

Number of buds per shoot at a depth greater than 10 cm (root buds included): **0**

Size of the belowground bud bank (root buds included): **11**

Depth of the belowground bud bank (root buds included) [cm]: **3**

Trophic mode

Parasitism and mycoheterotrophy: **autotrophic**

Carnivory: **non-carnivorous**

Symbiotic nitrogen fixation: **no nitrogen-fixing symbionts**

Karyology

Chromosome number (2n): **48**

Ploidy level (x): **6**

2C genome size [Mbp]: **1496.05**

1Cx monoploid genome size [Mbp]: **249.34**

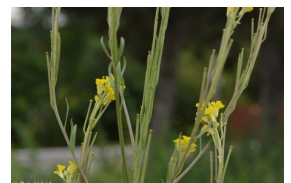
Taxon origin

Origin in the Czech Republic: **native**

Ecological indicator values

Ellenberg-type indicator values

Light indicator value: **8 - light plant, only exceptionally occurring at less than 40%**



of diffuse radiation incident in an open area

Temperature indicator value: **7 - heat indicator, occurring in relatively warm lowlands**

Moisture indicator value: **4 - transition between values 3 and 5**

Reaction indicator value: **6 - transition between values 5 and 7**

Nutrient indicator value: **4 - transition between values 3 and 5**

Salinity indicator value: **0 - not salt tolerant, glycophyte**

Indicator values for disturbance

Whole-community disturbance frequency indicator value: **-0.91**

Herb layer disturbance frequency indicator value: **-0.4**

Whole-community disturbance severity indicator value: **0.64**

Herb layer disturbance severity indicator value: **0.64**

Whole-community structure based disturbance indicator value: **0.58**

Herb layer structure-based disturbance indicator value: **0.66**

Habitat and sociology

Occurrence in habitats

1 Vegetation of cliffs, screes and walls

1C Walls: **1 - rare occurrence**

1D Mobile calcareous screes: **1 - rare occurrence**

4 Wetland and riverine herbaceous vegetation

4D Riverine reed vegetation: **1 - rare occurrence**

4I Vegetation of nitrophilous annual hygrophilous herbs: **1 - rare occurrence**

4L Nitrophilous herbaceous fringes of lowland rivers: **1 - rare occurrence**

8 Dry grasslands

8A Hercynian dry grasslands on rock outcrops: **1 - rare occurrence**

8B Submediterranean dry grasslands on rock outcrops: **1 - rare occurrence**

8C Narrow-leaved sub-continental steppes: **1 - rare occurrence**

8E Acidophilous dry grasslands: **1 - rare occurrence**

8F Thermophilous forest fringe vegetation: **1 - rare occurrence**

9 Sand grasslands and rock-outcrop vegetation

9B Open vegetation of acidic sands: **1 - rare occurrence**

11 Heathlands and scrub

11L Tall mesic and xeric shrub: **1 - rare occurrence**

11N Low xeric scrub: **1 - rare occurrence**

12 Forests

12H Peri-Alpidic basiphilous thermophilous oak forests: **1 - rare occurrence**

12J Acidophilous thermophilous oak forests: **1 - rare occurrence**

12W Pine and larch plantations: **1 - rare occurrence**

13 Anthropogenic vegetation

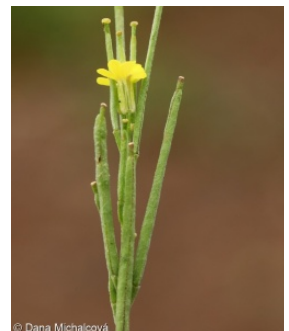
13A Annual vegetation of ruderal habitats: **2 - optimum**

13D Perennial thermophilous ruderal vegetation: **2 - optimum**

13E Perennial nitrophilous herbaceous vegetation of mesic sites: **1 - rare occurrence**

Affinity to the forest environment

Affinity to the forest environment in Thermophyticum: **0 - taxon that does not spontaneously occur in Czech forests**



Affinity to the forest environment in Mesophyticum and Oreophyticum: **0** - taxon that does not spontaneously occur in Czech forests

Diagnostic taxon

Diagnostic taxon of alliances: **THB Bromo pannonici-Festucion pallentis**

Diagnostic taxon of associations: **LCA02 Lithospermo purpureoerulei-Quercetum pubescentis**, **THB01 Poo badensis-Festucetum pallentis**, **XBG13 Kochietum densiflorae**

Ecological specialization indices

Ecological specialization index for all vegetation types: **3.5**

Ecological specialization index for non-forest vegetation: **3.6**



Distribution and frequency

Floristic zone: **northern temperate, southern temperate, submeridional**

Floristic region: **Europe**

Elevational belt in the Czech Republic: **lowlands, colline belt, submontane belt**

Occurrence frequency in the basic grid mapping cells and quadrants of the basic grid mapping cells: 350

taxon.data.freq_in_quad: 649

Commonness in vegetation plots from the Czech Republic

Occurrence frequency in vegetation plots: **0.1 %**

Occurrence frequency in vegetation plots with a cover above 5%: **2.9 %**

Occurrence frequency in vegetation plots with a cover above 25%: **2.9 %**

Occurrence frequency in vegetation plots with a cover above 50%: **0 %**

Mean percentage cover in vegetation plots: **3.2 %**

Maximum percentage cover in vegetation plots: **38 %**

Number of habitats with taxon occurrence in the Czech Republic

Number of narrow habitats in which the taxon occurs: **19**

Number of narrow habitats in which the taxon has its optimum: **2**

Number of broad habitats in which the taxon occurs: **7**

Number of broad habitats in which the taxon has its optimum: **1**

