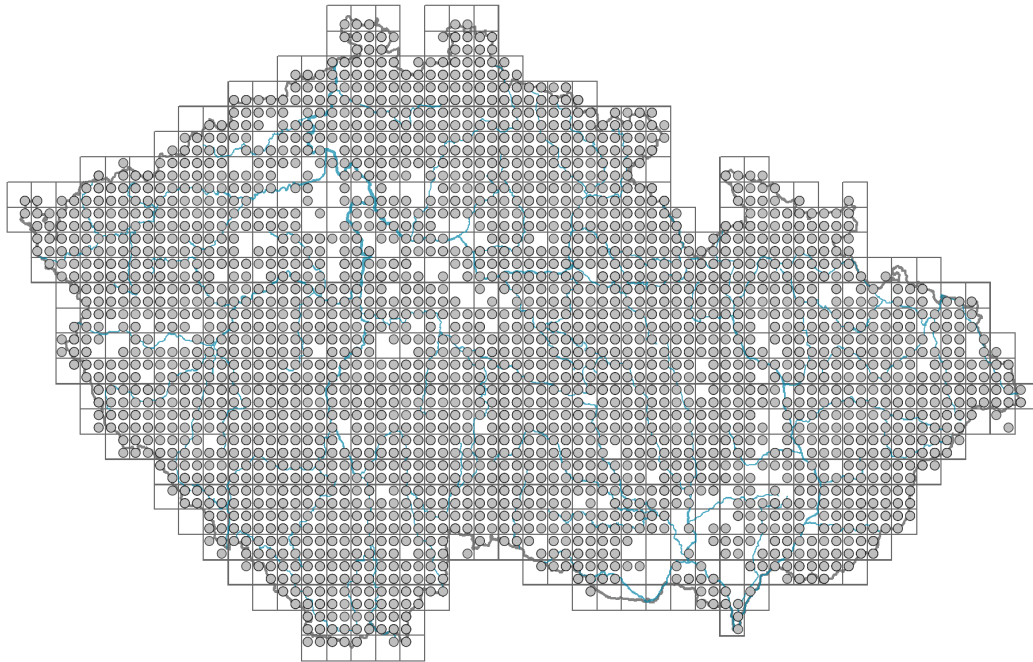


Luzula campestris agg.

Distribution



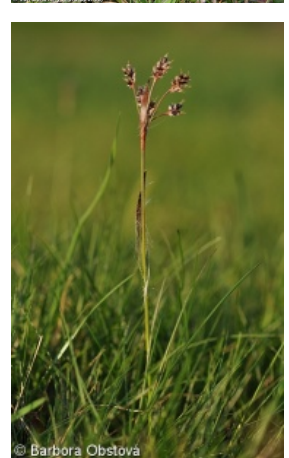
© Pavel Veselý

Map info

● revised records

○ unrevised records

On the map are not visualized records without the coordinates and records marked as incorrect or doubtful.



© Barbora Obštová



© Pavel Veselý

Habitus and growth type

Height [m]: **0.05-0.45**

Growth form: **clonal herb**

Life form: **hemicryptophyte**

Life strategy: **CS - competitor/stress-tolerator, CSR - competitor/stress-tolerator/ruderal**

Leaf

Leaf presence and metamorphosis: **leaves present, not modified**

Leaf arrangement (phyllotaxis): **alternate**

Leaf shape: **simple - entire**

Stipules: **absent**

Petiole: **absent**

Leaf life span: **summer green**

Leaf anatomy: **scleromorphic, mesomorphic**

Flower

Flowering period [month]: **March-July**

Flowering phase: **3 Prunus avium-Ranunculus auricomus (end of early spring), 5 Sorbus aucuparia-Galium odoratum (end of mid-spring)**

Flower colour: **brown**

Flower symmetry: **actinomorphic**
 Perianth type: **homochlamydeous**
 Perianth fusion: **free**
 Inflorescence type: **anthella**
 Dicliny: **synoecious**
 Generative reproduction type: **facultative autogamy, mixed mating**
 Pollination syndrome: **wind-pollination, insect-pollination, selfing**

Fruit, seed and dispersal

Fruit type: **dry fruit - capsule**
 Reproduction type: **by seed/spores and vegetatively**
 Dispersal unit (diaspore): **seed**
 Dispersal strategy: **Allium (mainly autochory)**
 Myrmecochory: **myrmecochorous**

Belowground organs and clonality

Shoot metamorphosis: **stolon, rhizome**
 Storage organ: **stolon, rhizome, tuft**
 Type of clonal growth organ: **epigeogenous rhizome, hypogeogenous rhizome**
 Freely dispersible organs of clonal growth: **absent**
 Shoot life span (cyclicality): **dicyclic or polycyclic shoots prevailing**
 Branching type of stem-derived organs of clonal growth: **sympodial**
 Primary root: **absent**
 Persistence of the clonal growth organ [year]: **3.9**
 Number of clonal offspring: **2.7**
 Lateral spreading distance by clonal growth [m]: **0.06**

Bud bank

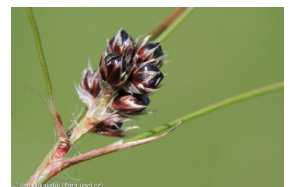
Number of buds per shoot at the soil surface (root buds excluded): **6**
 Number of buds per shoot at a depth of 0–10 cm (root buds excluded): **15**
 Number of buds per shoot at a depth greater than 10 cm (root buds excluded): **0**
 Size of the belowground bud bank (root buds excluded): **21**
 Depth of the belowground bud bank (root buds excluded) [cm]: **4**
 Number of buds per shoot at the soil surface (root buds included): **6**
 Number of buds per shoot at a depth of 0–10 cm (root buds included): **15**
 Number of buds per shoot at a depth greater than 10 cm (root buds included): **0**
 Size of the belowground bud bank (root buds included): **21**
 Depth of the belowground bud bank (root buds included) [cm]: **4**

Trophic mode

Parasitism and mycoheterotrophy: **autotrophic**
 Carnivory: **non-carnivorous**
 Symbiotic nitrogen fixation: **no nitrogen-fixing symbionts**

Karyology

Chromosome number (2n): **12, 24, 36, 48**



Ploidy level (x): **2, 4, 6**

2C genome size [Mbp]: **1352.5**

1Cx monoploid genome size [Mbp]: **332.83**

Taxon origin

Origin in the Czech Republic: **native**

Ecological indicator values

Ellenberg-type indicator values

Light indicator value: **7 - half-light plant, mostly occurring at full light, but also in the shade up to about 30% of diffuse radiation incident in an open area**

Temperature indicator value: **5 - moderate heat indicator, occurring from lowland to montane belt, mainly in submontane-temperate areas**

Moisture indicator value: **4 - transition between values 3 and 5**

Reaction indicator value: **3 - acidity indicator, occurring mainly in acidic conditions, exceptionally in neutral conditions**

Nutrient indicator value: **3 - occurring at nutrient-poor sites more frequently than at average sites and exceptionally at rich sites**

Salinity indicator value: **0 - not salt tolerant, glycophyte**

Indicator values for disturbance

Whole-community disturbance frequency indicator value: **-0.91**

Herb layer disturbance frequency indicator value: **-0.38**

Whole-community disturbance severity indicator value: **0.27**

Herb layer disturbance severity indicator value: **0.29**

Whole-community structure based disturbance indicator value: **0.49**

Herb layer structure-based disturbance indicator value: **0.64**

Habitat and sociology

Occurrence in habitats

1 Vegetation of cliffs, screes and walls

1B Siliceous cliffs and block fields: **1 - rare occurrence**

1D Mobile calcareous screes: **1 - rare occurrence**

2 Alpine and subalpine grasslands

2A Alpine grasslands on siliceous bedrock: **1 - rare occurrence**

2B Subalpine tall-forb and tall-grass vegetation: **1 - rare occurrence**

4 Wetland and riverine herbaceous vegetation

4G Tall-sedge beds: **1 - rare occurrence**

4H Vegetation of low annual hygrophilous herbs: **1 - rare occurrence**

4K Petasites fringes of montane brooks: **1 - rare occurrence**

5 Vegetation of springs and mires

5B Lowland to montane soft-water springs: **1 - rare occurrence**

5C Alpine and subalpine soft-water springs: **1 - rare occurrence**

5D Calcareous fens: **1 - rare occurrence**

5E Acidic moss-rich fens and peatland meadows: **2 - optimum**

5F Transitional mires: **1 - rare occurrence**



© Pavel Veselý



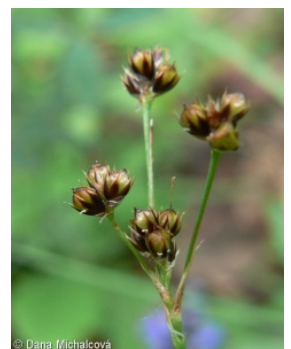
© Vladimír Motýčka



© Vladimír Motýčka

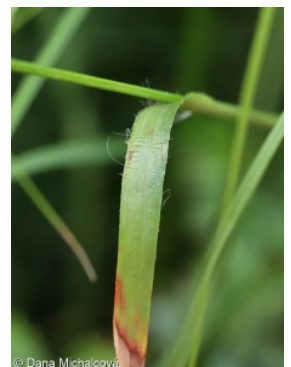
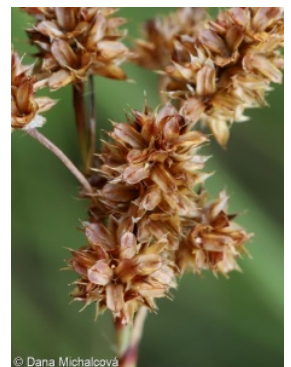
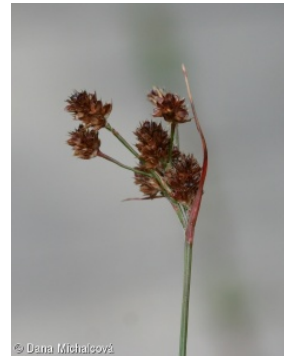
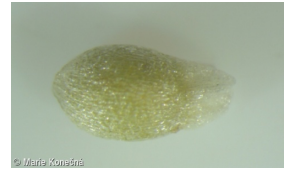


© Dana Michalčová



© Dana Michalčová

- 5G Raised bogs: **1 - rare occurrence**
- 6 Meadows and mesic pastures
- 6A Mesic Arrhenatherum meadows: **2 - optimum**
- 6B Montane mesic meadows: **2 - optimum**
- 6C Pastures and park grasslands: **2 - optimum**
- 6D Alluvial meadows of lowland rivers: **2 - optimum**
- 6E Wet Cirsium meadows: **1 - rare occurrence**
- 6F Intermittently wet Molinia meadows: **2 - optimum**
- 6G Vegetation of wet disturbed soils: **2 - optimum**
- 7 Acidophilous grasslands
- 7A Subalpine and montane acidophilous grasslands: **2 - optimum**
- 7B Submontane Nardus grasslands: **2 - optimum**
- 8 Dry grasslands
- 8A Hercynian dry grasslands on rock outcrops: **1 - rare occurrence**
- 8B Submediterranean dry grasslands on rock outcrops: **1 - rare occurrence**
- 8C Narrow-leaved sub-continental steppes: **1 - rare occurrence**
- 8D Broad-leaved dry grasslands: **1 - rare occurrence**
- 8E Acidophilous dry grasslands: **2 - optimum**
- 8F Thermophilous forest fringe vegetation: **1 - rare occurrence**
- 9 Sand grasslands and rock-outcrop vegetation
- 9B Open vegetation of acidic sands: **1 - rare occurrence**
- 9C Festuca grasslands on acidic sands: **1 - rare occurrence**
- 9E Acidophilous vegetation of spring therophytes and succulents: **1 - rare occurrence**
- 9F Basiphilous vegetation of spring therophytes and succulents: **1 - rare occurrence**
- 10 Saline vegetation
- 10I Inland saline meadows: **1 - rare occurrence**
- 11 Heathlands and scrub
- 11A Dry lowland to subalpine heathlands: **1 - rare occurrence**
- 11D Subalpine acidophilous Pinus mugo scrub: **1 - rare occurrence**
- 11H Subalpine deciduous scrub: **1 - rare occurrence**
- 11I Willow carrs: **1 - rare occurrence**
- 11L Tall mesic and xeric shrub: **1 - rare occurrence**
- 11R Scrub and pioneer woodland of forests clearings: **1 - rare occurrence**
- 12 Forests
- 12A Alder carrs: **1 - rare occurrence**
- 12C Oak-hornbeam forests: **1 - rare occurrence**
- 12F Limestone beech forests: **1 - rare occurrence**
- 12G Acidophilous beech forests: **1 - rare occurrence**
- 12H Peri-Alpidic basiphilous thermophilous oak forests: **1 - rare occurrence**
- 12I Sub-continental thermophilous oak forests: **2 - optimum**
- 12J Acidophilous thermophilous oak forests: **2 - optimum**
- 12K Acidophilous oak forests: **2 - optimum**
- 12L Boreo-continental pine forests: **1 - rare occurrence**
- 12O Peri-Alpidic pine forests: **1 - rare occurrence**
- 12R Acidophilous spruce forests: **1 - rare occurrence**
- 12V Spruce plantations: **1 - rare occurrence**
- 12W Pine and larch plantations: **2 - optimum**



13 Anthropogenic vegetation

13F Herbaceous vegetation of forests clearings and Rubus scrub: **2 - optimum**

Diagnostic taxon

Diagnostic taxon of alliances: [TDD *Molinion caeruleae*](#), [TEC *Violion caninae*](#)

Diagnostic taxon of associations: [TDD02 *Junco effusi-Molinietum caeruleae*](#), [TDF03 *Angelico sylvestris-Cirsietum palustris*](#)

Constant taxon

Constant taxon of classes: [TE *Calluno-Ulicetea*](#)

Constant taxon of alliances: [RBC *Caricion canescenti-nigrae*](#), [TDD *Molinion caeruleae*](#), [TEA *Nardion strictae*](#), [TEB *Nardo strictae-Agrostion tenuis*](#), [TEC *Violion caninae*](#)

Constant taxon of associations: [LCB02 *Carici fritschii-Quercetum roboris*](#), [LCC02 *Genisto pilosae-Quercetum petraeae*](#), [RBB01 *Sphagno warnstorffii-Eriophoretum latifolii*](#), [RBC01 *Caricetum nigrae*](#), [TDB01 *Geranio sylvatici-Trisetetum flavescens*](#), [TDB02 *Melandrio rubri-Phleetum alpini*](#), [TDC02 *Anthoxantho odorati-Agrostietum tenuis*](#), [TDD02 *Junco effusi-Molinietum caeruleae*](#), [TDE02 *Holcetum lanati*](#), [TDF03 *Angelico sylvestris-Cirsietum palustris*](#), [TEA01 *Festuco supinae-Nardetum strictae*](#), [TEA02 *Thesio alpini-Nardetum strictae*](#), [TEB01 *Sileno vulgaris-Nardetum strictae*](#), [TEC01 *Festuco capillatae-Nardetum strictae*](#), [TEC02 *Campanulo rotundifoliae-Dianthetum deltoidis*](#), [TEF01 *Vaccinio-Callunetum vulgaris*](#), [THG03 *Viscario vulgaris-Avenuletum pratensis*](#)

Dominant taxon

Dominant taxon of associations: [TEC02 *Campanulo rotundifoliae-Dianthetum deltoidis*](#)

Ecological specialization indices

Ecological specialization index for all vegetation types: **5.1**

Ecological specialization index for non-forest vegetation: **5.2**

Ecological specialization index for forest vegetation: **4.3**

Distribution and frequency

Floristic zone: **arctic, boreal, northern temperate, southern temperate, submeridional, meridional, subtropical, tropical, austral or antarctic**

Floristic region: **Europe, Asia, circumpolar**

Elevational belt in the Czech Republic: **lowlands, colline belt, submontane belt, montane belt, subalpine belt**

Occurrence frequency in the basic grid mapping cells and quadrants of the basic grid mapping cells: 662

taxon.data.freq_in_quad: 2307

Commonness in vegetation plots from the Czech Republic

Occurrence frequency in vegetation plots: **6.5 %**

Occurrence frequency in vegetation plots with a cover above 5%: **4.8 %**

Occurrence frequency in vegetation plots with a cover above 25%: **0.3 %**

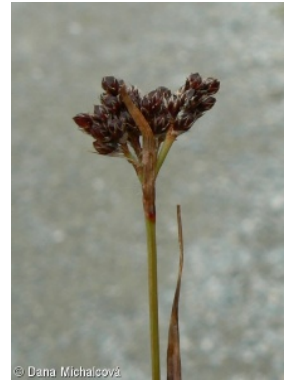
Occurrence frequency in vegetation plots with a cover above 50%: **0 %**

Mean percentage cover in vegetation plots: **2.8 %**

Maximum percentage cover in vegetation plots: **38 %**

Number of habitats with taxon occurrence in the Czech Republic

Number of narrow habitats in which the taxon occurs: **53**



Number of narrow habitats in which the taxon has its optimum: **15**

Number of broad habitats in which the taxon occurs: **12**

Number of broad habitats in which the taxon has its optimum: **6**