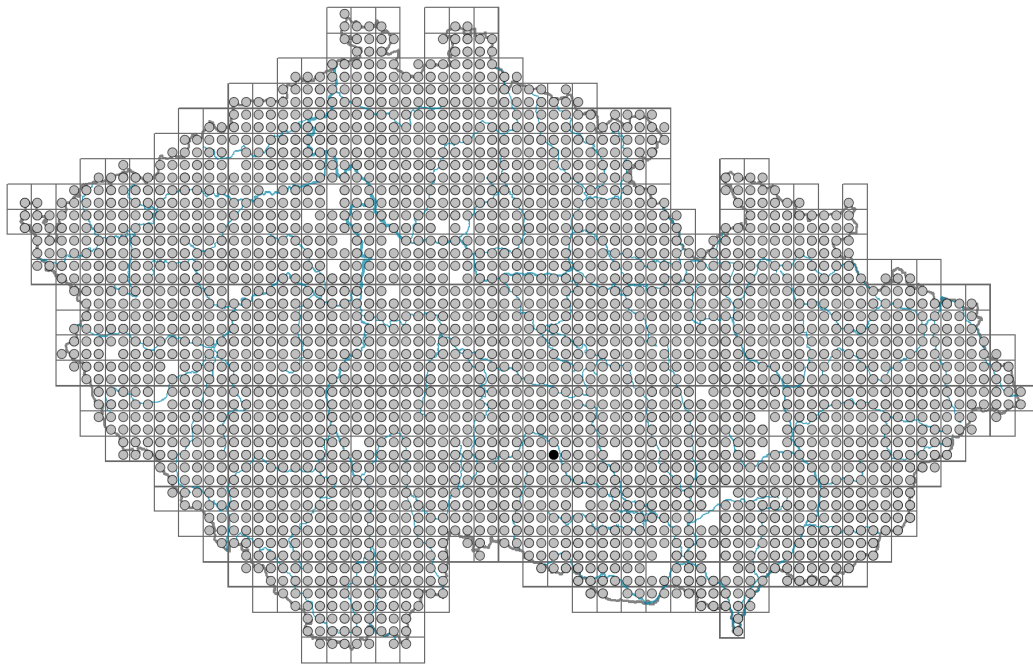


Veronica chamaedrys agg.

Distribution



Map info

● revised records

○ unrevised records

On the map are not visualized records without the coordinates and records marked as incorrect or doubtful.

Habitus and growth type

Height [m]: **0.15-0.3**

Growth form: **clonal herb**

Life form: **chamaephyte, hemicryptophyte**

Life strategy: **CSR - competitor/stress-tolerator/ruderal**

Life strategy (Pierce method based on leaf traits): **SR/CSR**

Life strategy (Pierce method, C-score): **12.5 %**

Life strategy (Pierce method, S-score): **40.9 %**

Life strategy (Pierce method, R-score): **46.6 %**

Leaf

Leaf presence and metamorphosis: **leaves present, not modified**

Leaf arrangement (phyllotaxis): **opposite**

Leaf shape: **simple - entire**

Stipules: **absent**

Petiole: **both present and absent**

Leaf life span: **evergreen**

Leaf anatomy: **mesomorphic**

Flower

Flowering period [month]: **May-August**



Flowering phase: **4 Fagus sylvatica-Galeobdolon (start of mid-spring)**

Flower colour: **pink, blue**

Flower symmetry: **zygomorphic**

Perianth type: **calyx and corolla**

Perianth fusion: **fused**

Shape of the sympetalous corolla or syntepalous perianth: **rotate**

Calyx fusion: **fused at the base**

Inflorescence type: **racemus**

Dicliny: **synoecious**

Generative reproduction type: **facultative allogamy**

Pollination syndrome: **insect-pollination, pseudocleistogamy**

Pollinator spectrum: **honeybee, bumblebees, solitary bees, other Hymenoptera, hoverflies, flies s. l., meat flies s. l., other Diptera, butterflies, beetles, other pollinators**

Fruit, seed and dispersal

Fruit type: **dry fruit - capsule**

Fruit colour: **brown**

Reproduction type: **by seed/spores and vegetatively**

Dispersal unit (diaspore): **seed**

Dispersal strategy: **Allium (mainly autochory)**

Myrmecochory: **non-myrmecochorous (a), non-myrmecochorous (a) nv**

Belowground organs and clonality

Shoot metamorphosis: **stolon**

Storage organ: **stolon**

Type of clonal growth organ: **stolon**

Freely dispersible organs of clonal growth: **absent**

Shoot life span (cyclicality): **monocyclic shoots prevailing**

Branching type of stem-derived organs of clonal growth: **sympodial**

Primary root: **absent**

Persistence of the clonal growth organ [year]: **2.9**

Number of clonal offspring: **2.1**

Lateral spreading distance by clonal growth [m]: **0.13**

Bud bank

Number of buds per shoot at the soil surface (root buds excluded): **9**

Number of buds per shoot at a depth of 0–10 cm (root buds excluded): **15**

Number of buds per shoot at a depth greater than 10 cm (root buds excluded): **0**

Size of the belowground bud bank (root buds excluded): **24**

Depth of the belowground bud bank (root buds excluded) [cm]: **4**

Number of buds per shoot at the soil surface (root buds included): **9**

Number of buds per shoot at a depth of 0–10 cm (root buds included): **15**

Number of buds per shoot at a depth greater than 10 cm (root buds included): **0**

Size of the belowground bud bank (root buds included): **24**

Depth of the belowground bud bank (root buds included) [cm]: **4**



Trophic mode

Parasitism and mycoheterotrophy: **autotrophic**

Carnivory: **non-carnivorous**

Symbiotic nitrogen fixation: **no nitrogen-fixing symbionts**

Karyology

Chromosome number (2n): **16, 32**

Ploidy level (x): **2, 4**

2C genome size [Mbp]: **2295.22**

1Cx monoploid genome size [Mbp]: **767.97**

Taxon origin

Origin in the Czech Republic: **native**

Ecological indicator values

Ellenberg-type indicator values

Light indicator value: **6x - transition between values 5 and 7; rarely at less than 20% of diffuse radiation incident in an open area (generalist)**

Temperature indicator value: **5x - moderate heat indicator, occurring from lowland to montane belt, mainly in submontane-temperate areas (generalist)**

Moisture indicator value: **5 - indicator of fresh soils, focus on soils of average moisture, missing on wet and on soils that frequently dry out**

Reaction indicator value: **7x - indicator of slightly acidic to slightly basic conditions, never occurring in very acidic conditions (generalist)**

Nutrient indicator value: **6x - transition between values 5 and 7 (generalist)**

Salinity indicator value: **0 - not salt tolerant, glycophyte**

Indicator values for disturbance

Whole-community disturbance frequency indicator value: **-1.35**

Herb layer disturbance frequency indicator value: **-0.43**

Whole-community disturbance severity indicator value: **0.32**

Herb layer disturbance severity indicator value: **0.3**

Whole-community structure based disturbance indicator value: **0.31**

Herb layer structure-based disturbance indicator value: **0.44**

Habitat and sociology

Occurrence in habitats

1 Vegetation of cliffs, screes and walls

1A Calcareous cliffs: **1 - rare occurrence**

1B Siliceous cliffs and block fields: **1 - rare occurrence**

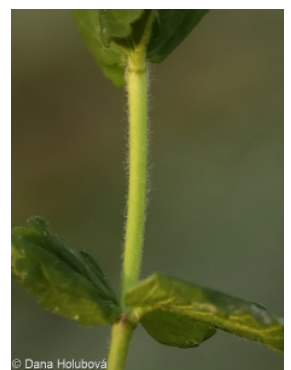
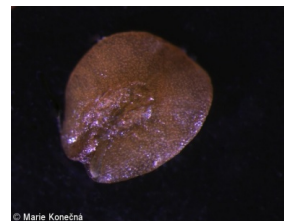
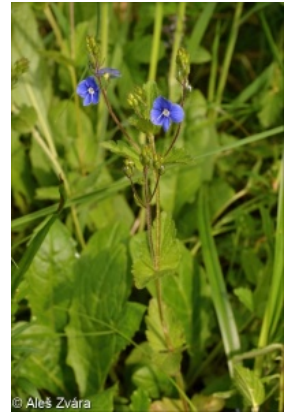
1C Walls: **1 - rare occurrence**

1D Mobile calcareous screes: **1 - rare occurrence**

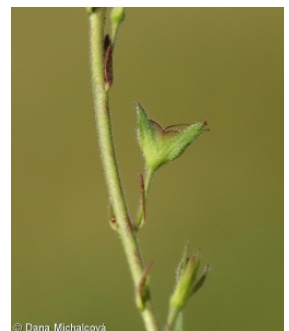
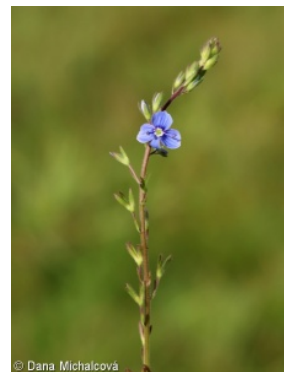
2 Alpine and subalpine grasslands

2B Subalpine tall-forb and tall-grass vegetation: **1 - rare occurrence**

4 Wetland and riverine herbaceous vegetation



- 4D Riverine reed vegetation: **1 - rare occurrence**
- 4E Reed vegetation of brooks: **1 - rare occurrence**
- 4G Tall-sedge beds: **1 - rare occurrence**
- 4J River gravel banks: **1 - rare occurrence**
- 4K Petasites fringes of montane brooks: **1 - rare occurrence**
- 4L Nitrophilous herbaceous fringes of lowland rivers: **1 - rare occurrence**
- 5 Vegetation of springs and mires
- 5B Lowland to montane soft-water springs: **1 - rare occurrence**
- 5D Calcareous fens: **1 - rare occurrence**
- 5E Acidic moss-rich fens and peatland meadows: **1 - rare occurrence**
- 6 Meadows and mesic pastures
- 6A Mesic Arrhenatherum meadows: **2 - optimum**
- 6B Montane mesic meadows: **2 - optimum**
- 6C Pastures and park grasslands: **2 - optimum**
- 6D Alluvial meadows of lowland rivers: **2 - optimum**
- 6E Wet Cirsium meadows: **2 - optimum**
- 6F Intermittently wet Molinia meadows: **2 - optimum**
- 6G Vegetation of wet disturbed soils: **1 - rare occurrence**
- 7 Acidophilous grasslands
- 7A Subalpine and montane acidophilous grasslands: **2 - optimum**
- 7B Submontane Nardus grasslands: **2 - optimum**
- 8 Dry grasslands
- 8A Hercynian dry grasslands on rock outcrops: **1 - rare occurrence**
- 8B Submediterranean dry grasslands on rock outcrops: **1 - rare occurrence**
- 8C Narrow-leaved sub-continental steppes: **2 - optimum**
- 8D Broad-leaved dry grasslands: **2 - optimum**
- 8E Acidophilous dry grasslands: **1 - rare occurrence**
- 8F Thermophilous forest fringe vegetation: **2 - optimum**
- 9 Sand grasslands and rock-outcrop vegetation
- 9C Festuca grasslands on acidic sands: **1 - rare occurrence**
- 9E Acidophilous vegetation of spring therophytes and succulents: **1 - rare occurrence**
- 9F Basiphilous vegetation of spring therophytes and succulents: **1 - rare occurrence**
- 10 Saline vegetation
- 10I Inland saline meadows: **1 - rare occurrence**
- 11 Heathlands and scrub
- 11A Dry lowland to subalpine heathlands: **1 - rare occurrence**
- 11H Subalpine deciduous scrub: **1 - rare occurrence**
- 11J Willow galleries of loamy and sandy river banks: **1 - rare occurrence**
- 11L Tall mesic and xeric shrub: **2 - optimum**
- 11N Low xeric scrub: **1 - rare occurrence**
- 11R Scrub and pioneer woodland of forests clearings: **1 - rare occurrence**
- 12 Forests
- 12A Alder carrs: **1 - rare occurrence**
- 12B Alluvial forests: **1 - rare occurrence**
- 12C Oak-hornbeam forests: **2 - optimum**
- 12D Ravine forests: **1 - rare occurrence**



- 12E Herb-rich beech forests: **1 - rare occurrence**
 12F Limestone beech forests: **2 - optimum**
 12G Acidophilous beech forests: **1 - rare occurrence**
 12H Peri-Alpidic basiphilous thermophilous oak forests: **2 - optimum**
 12I Sub-continental thermophilous oak forests: **2 - optimum**
 12J Acidophilous thermophilous oak forests: **2 - optimum**
 12K Acidophilous oak forests: **1 - rare occurrence**
 12L Boreo-continental pine forests: **1 - rare occurrence**
 12O Peri-Alpidic pine forests: **1 - rare occurrence**
 12T Robinia pseudacacia plantations: **1 - rare occurrence**
 12U Plantations of broad-leaved non-native trees: **1 - rare occurrence**
 12V Spruce plantations: **1 - rare occurrence**
 12W Pine and larch plantations: **1 - rare occurrence**
 13 Anthropogenic vegetation
 13A Annual vegetation of ruderal habitats: **1 - rare occurrence**
 13B Annual vegetation of arable land: **1 - rare occurrence**
 13C Annual vegetation of trampled habitats: **1 - rare occurrence**
 13D Perennial thermophilous ruderal vegetation: **1 - rare occurrence**
 13E Perennial nitrophilous herbaceous vegetation of mesic sites: **2 - optimum**
 13F Herbaceous vegetation of forests clearings and Rubus scrub: **1 - rare occurrence**
 Affinity to the forest environment
 Affinity to the forest environment in Thermophyticum: **2.1 - taxon occurring both in the forest and open vegetation**
 Affinity to the forest environment in Mesophyticum and Oreophyticum: **2.1 - taxon occurring both in the forest and open vegetation**
 Constant taxon
 Constant taxon of classes: [LC *Quercetea pubescentis*](#)
 Constant taxon of alliances: [LCB *Aceri tatarici-Quercion*](#), [LCC *Quercion petraeae*](#), [THI *Trifolion medii*](#)
 Constant taxon of associations: [LBB01 *Galio sylvatici-Carpinetum betuli*](#), [LBB04 *Primulo veris-Carpinetum betuli*](#), [LCB02 *Carici fritschii-Quercetum roboris*](#), [LCC03 *Melico pictae-Quercetum roboris*](#), [THF02 *Brachypodio pinnati-Molinietum arundinaceae*](#), [THI02 *Trifolio-Melampyretum nemorosi*](#)
 Ecological specialization indices
 Ecological specialization index for all vegetation types: **4.1**
 Ecological specialization index for non-forest vegetation: **4.9**
 Ecological specialization index for forest vegetation: **4.8**

Distribution and frequency

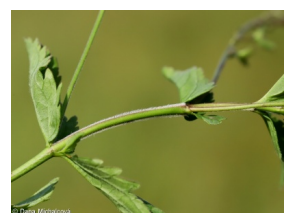
Floristic zone: **boreal, northern temperate, southern temperate, submeridional, meridional**

Floristic region: **Europe**

Elevational belt in the Czech Republic: **lowlands, colline belt, submontane belt, montane belt, subalpine belt**

Occurrence frequency in the basic grid mapping cells and quadrants of the basic grid mapping cells: 671

taxon.data.freq_in_quad: 2458



Commonness in vegetation plots from the Czech Republic

Occurrence frequency in vegetation plots: **10.2 %**

Occurrence frequency in vegetation plots with a cover above 5%: **6.8 %**

Occurrence frequency in vegetation plots with a cover above 25%: **0.3 %**

Occurrence frequency in vegetation plots with a cover above 50%: **0 %**

Mean percentage cover in vegetation plots: **2.9 %**

Maximum percentage cover in vegetation plots: **38 %**

Number of habitats with taxon occurrence in the Czech Republic

Number of narrow habitats in which the taxon occurs: **62**

Number of narrow habitats in which the taxon has its optimum: **18**

Number of broad habitats in which the taxon occurs: **12**

Number of broad habitats in which the taxon has its optimum: **6**