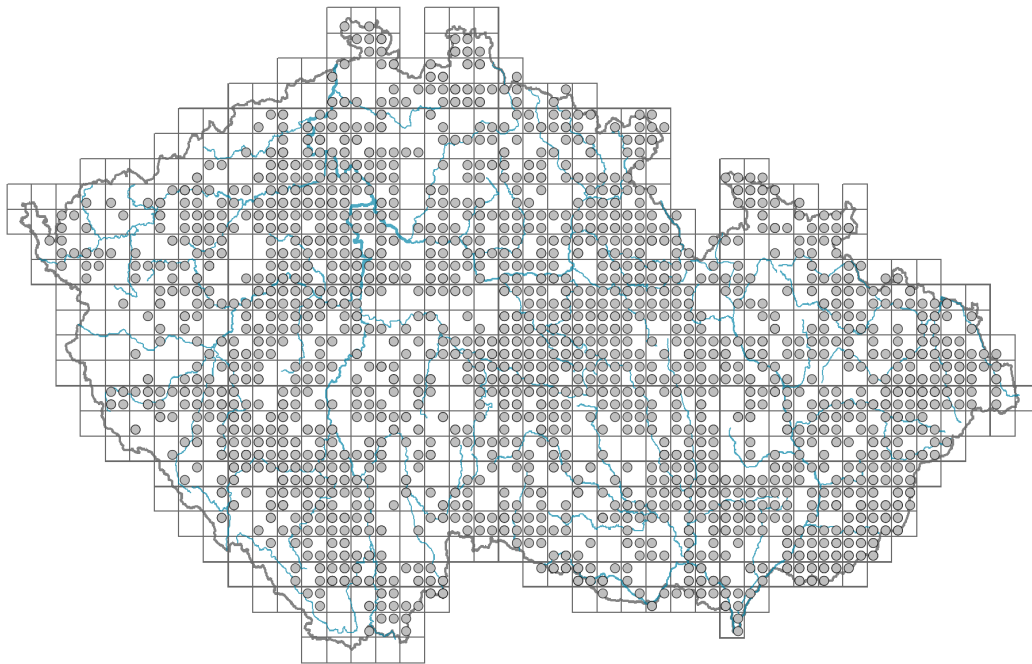


Aethusa cynapium agg.

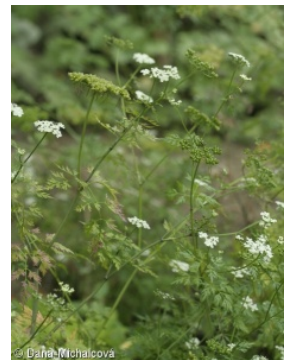
Distribution



Map info

- revised records
- unrevised records

On the map are not visualized records without the coordinates and records marked as incorrect or doubtful.



Habitus and growth type

Height [m]: **0.05-1.1**

Growth form: **annual herb**

Life form: **therophyte**

Life strategy: **CR - competitor/ruderal**

Life strategy (Pierce method based on leaf traits): **CR/CSR**

Life strategy (Pierce method, C-score): **43.3 %**

Life strategy (Pierce method, S-score): **12.1 %**

Life strategy (Pierce method, R-score): **44.6 %**

Leaf

Leaf presence and metamorphosis: **leaves present, not modified**

Leaf arrangement (phyllotaxis): **alternate**

Leaf shape: **compound - bipinnate**

Stipules: **absent**

Petiole: **present**

Leaf life span: **evergreen**

Leaf anatomy: **mesomorphic**

Flower

Flowering period [month]: **July-September**

Flowering phase: **7 Ligustrum vulgare-Stachys sylvatica (end of early summer)**

Flower colour: **white**

Flower symmetry: **actinomorphic, zygomorphic**

Perianth type: **calyx absent, corolla present**

Perianth fusion: **free**

Inflorescence type: **umbrella composita**

Dicliny: **synoecious, andromonoecious**

Generative reproduction type: **mixed mating**

Pollination syndrome: **insect-pollination, selfing**

Pollinator spectrum: **hoverflies, other Diptera (other Hymenoptera, flies s. l.)**

Fruit, seed and dispersal

Fruit type: **dry fruit - cremocarp**

Fruit colour: **yellow, brown**

Reproduction type: **only by seed/spores**

Dispersal unit (diaspore): **fruit, infrutescence or its part**

Dispersal strategy: **Allium (mainly autochory)**

Myrmecochory: **non-myrmecochorous (b)**

Belowground organs and clonality

Shoot life span (cyclicality): **monocyclic shoots prevailing**

Primary root: **present**

Bud bank

Number of buds per shoot at the soil surface (root buds excluded): **5**

Number of buds per shoot at a depth of 0–10 cm (root buds excluded): **0**

Number of buds per shoot at a depth greater than 10 cm (root buds excluded): **0**

Size of the belowground bud bank (root buds excluded): **5**

Depth of the belowground bud bank (root buds excluded) [cm]: **1**

Number of buds per shoot at the soil surface (root buds included): **5**

Number of buds per shoot at a depth of 0–10 cm (root buds included): **0**

Number of buds per shoot at a depth greater than 10 cm (root buds included): **0**

Size of the belowground bud bank (root buds included): **5**

Depth of the belowground bud bank (root buds included) [cm]: **1**

Trophic mode

Parasitism and mycoheterotrophy: **autotrophic**

Carnivory: **non-carnivorous**

Symbiotic nitrogen fixation: **no nitrogen-fixing symbionts**

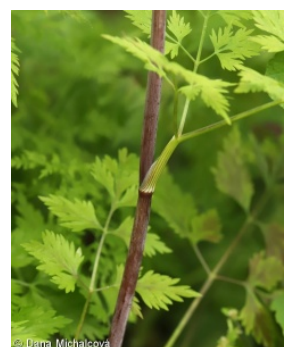
Karyology

Chromosome number (2n): **20**

Ploidy level (x): **2**

2C genome size [Mbp]: **2521.36**

1Cx monoploid genome size [Mbp]: **1260.68**



Taxon origin

Origin in the Czech Republic: **native**

Ecological indicator values

Ellenberg-type indicator values

Light indicator value: **6 - transition between values 5 and 7; rarely at less than 20% of diffuse radiation incident in an open area**

Temperature indicator value: **5 - moderate heat indicator, occurring from lowland to montane belt, mainly in submontane-temperate areas**

Moisture indicator value: **5 - indicator of fresh soils, focus on soils of average moisture, missing on wet and on soils that frequently dry out**

Reaction indicator value: **7 - indicator of slightly acidic to slightly basic conditions, never occurring in very acidic conditions**

Nutrient indicator value: **7 - occurring at nutrient-rich sites more often than at average sites and only exceptionally at poor sites**

Salinity indicator value: **0 - not salt tolerant, glycophyte**

Indicator values for disturbance

Whole-community disturbance frequency indicator value: **-0.75**

Herb layer disturbance frequency indicator value: **-0.03**

Whole-community disturbance severity indicator value: **0.92**

Herb layer disturbance severity indicator value: **0.91**

Whole-community structure based disturbance indicator value: **0.56**

Herb layer structure-based disturbance indicator value: **0.64**

Habitat and sociology

Occurrence in habitats

1 Vegetation of cliffs, screes and walls

1C Walls: **1 - rare occurrence**

4 Wetland and riverine herbaceous vegetation

4D Riverine reed vegetation: **1 - rare occurrence**

4I Vegetation of nitrophilous annual hygrophilous herbs: **1 - rare occurrence**

4L Nitrophilous herbaceous fringes of lowland rivers: **1 - rare occurrence**

6 Meadows and mesic pastures

6G Vegetation of wet disturbed soils: **1 - rare occurrence**

11 Heathlands and scrub

11J Willow galleries of loamy and sandy river banks: **1 - rare occurrence**

11L Tall mesic and xeric shrub: **1 - rare occurrence**

11R Scrub and pioneer woodland of forests clearings: **1 - rare occurrence**

12 Forests

12B Alluvial forests: **1 - rare occurrence**

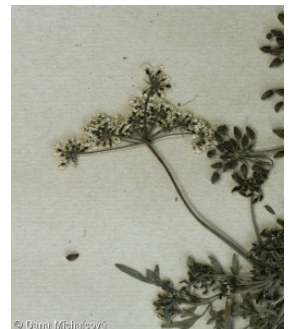
12C Oak-hornbeam forests: **1 - rare occurrence**

12D Ravine forests: **2 - optimum**

12E Herb-rich beech forests: **1 - rare occurrence**

12H Peri-Alpidic basiphilous thermophilous oak forests: **1 - rare occurrence**

12J Acidophilous thermophilous oak forests: **1 - rare occurrence**



- 12T Robinia pseudacacia plantations: **1 - rare occurrence**
12U Plantations of broad-leaved non-native trees: **1 - rare occurrence**
12V Spruce plantations: **1 - rare occurrence**
12W Pine and larch plantations: **1 - rare occurrence**
13 Anthropogenic vegetation
13A Annual vegetation of ruderal habitats: **1 - rare occurrence**
13B Annual vegetation of arable land: **2 - optimum**
13C Annual vegetation of trampled habitats: **1 - rare occurrence**
13D Perennial thermophilous ruderal vegetation: **1 - rare occurrence**
13E Perennial nitrophilous herbaceous vegetation of mesic sites: **2 - optimum**
13F Herbaceous vegetation of forests clearings and Rubus scrub: **2 - optimum**



Ecological specialization indices

- Ecological specialization index for all vegetation types: **5.5**
Ecological specialization index for non-forest vegetation: **5.8**
Ecological specialization index for forest vegetation: **5.5**

Colonization ability

- Index of colonization success (ICS): **3**
Index of colonization potential (ICP): **2**
Optimum successional age [years]: **8**

Distribution and frequency

- Floristic zone: **boreal, northern temperate, southern temperate, submeridional**
Floristic region: **Europe**
Elevational belt in the Czech Republic: **lowlands, colline belt, submontane belt**
Occurrence frequency in the basic grid mapping cells and quadrants of the basic grid mapping cells: **563**
taxon.data.freq_in_quad: **1469**

Commonness in vegetation plots from the Czech Republic

- Occurrence frequency in vegetation plots: **1.4 %**
Occurrence frequency in vegetation plots with a cover above 5%: **11.2 %**
Occurrence frequency in vegetation plots with a cover above 25%: **1 %**
Occurrence frequency in vegetation plots with a cover above 50%: **0 %**
Mean percentage cover in vegetation plots: **3.8 %**
Maximum percentage cover in vegetation plots: **38 %**

Number of habitats with taxon occurrence in the Czech Republic

- Number of narrow habitats in which the taxon occurs: **24**
Number of narrow habitats in which the taxon has its optimum: **4**
Number of broad habitats in which the taxon occurs: **6**
Number of broad habitats in which the taxon has its optimum: **2**

Threats and protection

- Legal protection: **not protected by law**