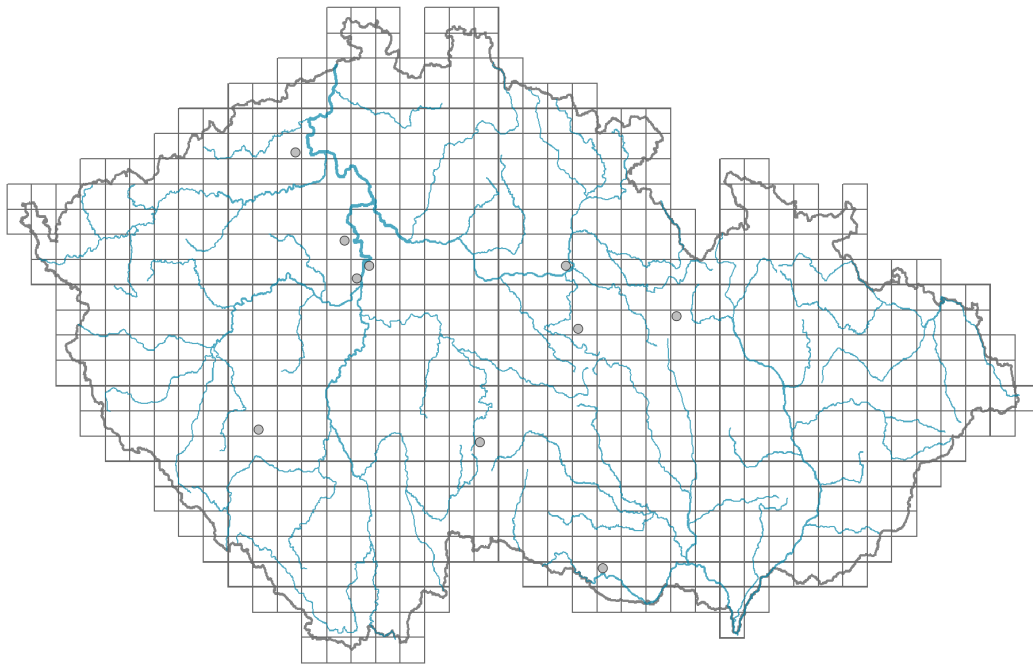


# *Alyssum murale*

## Distribution



© Dana Michalčová

### Map info

● revised records

● unrevised records

On the map are not visualized records without the coordinates and records marked as incorrect or doubtful.



© Dana Michalčová

## Habitus and growth type

Height [m]: **0.25-0.7**

Life form: **hemicryptophyte**

Life strategy: **CSR - competitor/stress-tolerator/ruderal**

## Leaf

Leaf presence and metamorphosis: **leaves present, not modified**

Leaf arrangement (phyllotaxis): **alternate**

Leaf shape: **simple - entire**

Stipules: **absent**

Petiole: **both present and absent**

Leaf life span: **evergreen**

Leaf anatomy: **scleromorphic, mesomorphic**

## Flower

Flowering period [month]: **June-August**

Flower colour: **yellow**

Flower symmetry: **actinomorphic**

Perianth type: **calyx and corolla**

Perianth fusion: **free**

Calyx fusion: **aposepalous**



© Dana Michalčová



© Dana Michalčová

Inflorescence type: **corymbothyrus**

Dicliny: **synoecious**

Pollination syndrome: **insect-pollination, selfing**

## Fruit, seed and dispersal

Fruit type: **dry fruit - silicula**

Reproduction type: **only by seed/spores**

Dispersal unit (diaspore): **seed**

Dispersal strategy: **Allium (mainly autochory)**

Myrmecochory: **non-myrmecochorous (b)**

## Belowground organs and clonality

Shoot metamorphosis: **pleiocorm**

Storage organ: **pleiocorm**

## Trophic mode

Parasitism and mycoheterotrophy: **autotrophic**

Carnivory: **non-carnivorous**

Symbiotic nitrogen fixation: **no nitrogen-fixing symbionts**

## Taxon origin

Origin in the Czech Republic: **neophyte**

Invasion status: **naturalized**

Geographic origin: **Mediterranean**

Period of introduction: **Late Modern Period (1800-1950)**

Introduction pathway: **intentional - ornamental**

## Habitat and sociology

Affinity to the forest environment

Affinity to the forest environment in Thermophyticum: **0 - taxon that does not spontaneously occur in Czech forests**

Affinity to the forest environment in Mesophyticum and Oreophyticum: **0 - taxon that does not spontaneously occur in Czech forests**

## Distribution and frequency

Floristic zone: **submeridional**

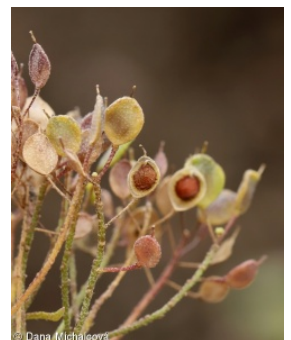
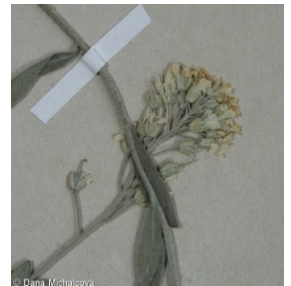
Floristic region: **Eastern Europe, Western Asia**

Occurrence frequency in the basic grid mapping cells and quadrants of the basic grid mapping cells: 9

taxon.data.freq\_in\_quad: 10

## Threats and protection

Red List 2017 (national categories): **taxon is not on the Red List**



Red List 2017 (IUCN categories): **LC(NA) - least concern (taxon is not on the Red List)**

Legal protection: **not protected by law**

