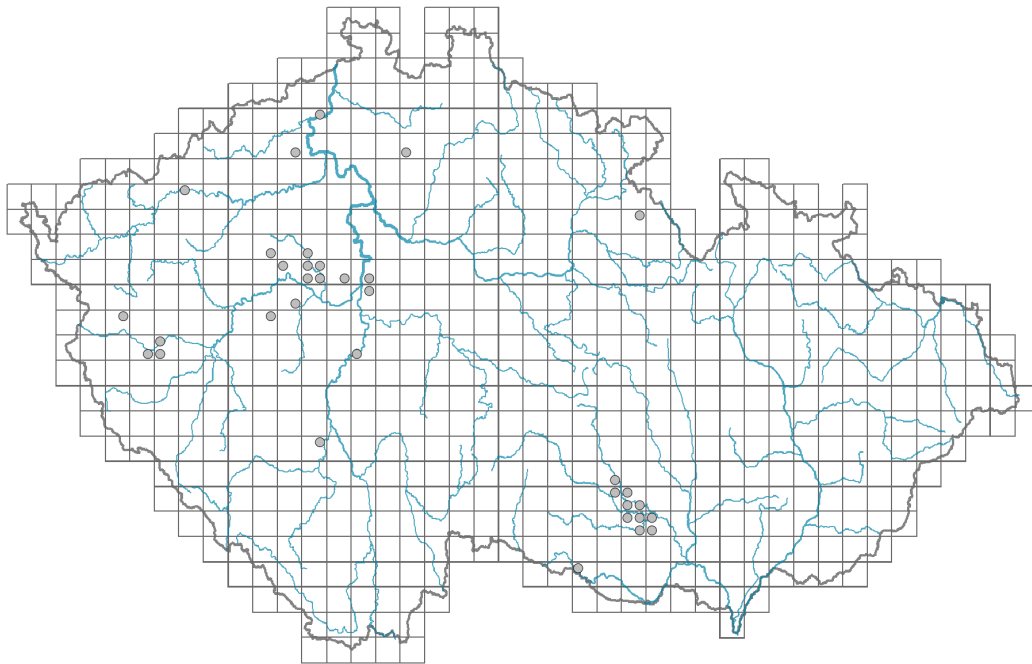


Arabidopsis petraea

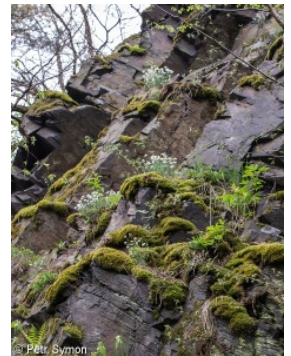
Distribution



Map info

- revised records
- unrevised records

On the map are not visualized records without the coordinates and records marked as incorrect or doubtful.



Habitus and growth type

Height [m]: **0.1-0.25**

Growth form: **polycarpic perennial non-clonal herb**

Life form: **hemicryptophyte**

Life strategy: **S - stress-tolerator**

Life strategy (Pierce method based on leaf traits): **R**

Life strategy (Pierce method, C-score): **3.6 %**

Life strategy (Pierce method, S-score): **0 %**

Life strategy (Pierce method, R-score): **96.4 %**

Leaf

Leaf presence and metamorphosis: **leaves present, not modified**

Leaf arrangement (phyllotaxis): **alternate, rosulate**

Leaf shape: **simple - entire**

Stipules: **absent**

Petiole: **absent**

Leaf life span: **evergreen**

Flower

Flowering period [month]: **April-June**

Flowering phase: **6 Cornus sanguinea-Melica uniflora (start of early summer)**

Flower colour: **white**

Flower symmetry: **actinomorphic**

Perianth type: **calyx and corolla**

Perianth fusion: **free**

Calyx fusion: **aposepalous**

Inflorescence type: **racemus**

Dicliny: **synoecious**

Generative reproduction type: **alogamy self-incompatibility, facultative allogamy**

Pollination syndrome: **insect-pollination, selfing**

Fruit, seed and dispersal

Fruit type: **dry fruit - siliqua**

Reproduction type: **only by seed/spores**

Dispersal unit (diaspore): **seed**

Dispersal strategy: **Allium (mainly autochory)**

Myrmecochory: **non-myrmecochorous (b)**

Belowground organs and clonality

Shoot metamorphosis: **pleiocorm**

Storage organ: **pleiocorm**

Primary root: **present**

Position of root buds: **primary root**

Role of root buds in life-history of a plant: **additive**

Bud bank

Number of buds per shoot at the soil surface (root buds excluded): **5**

Number of buds per shoot at a depth of 0–10 cm (root buds excluded): **5**

Number of buds per shoot at a depth greater than 10 cm (root buds excluded): **0**

Size of the belowground bud bank (root buds excluded): **10**

Depth of the belowground bud bank (root buds excluded) [cm]: **3**

Number of buds per shoot at the soil surface (root buds included): **5**

Number of buds per shoot at a depth of 0–10 cm (root buds included): **5**

Number of buds per shoot at a depth greater than 10 cm (root buds included): **0**

Size of the belowground bud bank (root buds included): **10**

Depth of the belowground bud bank (root buds included) [cm]: **3**

Trophic mode

Parasitism and mycoheterotrophy: **autotrophic**

Carnivory: **non-carnivorous**

Symbiotic nitrogen fixation: **no nitrogen-fixing symbionts**

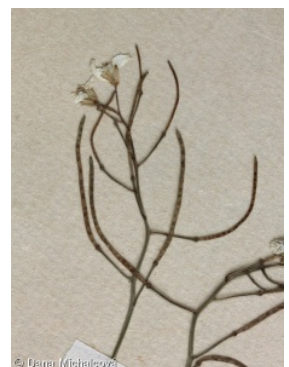
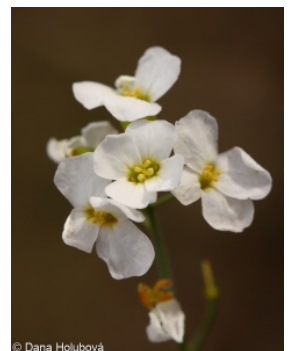
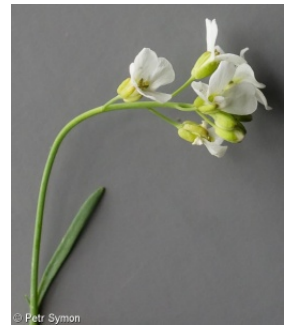
Karyology

Chromosome number (2n): **32 (16)**

Ploidy level (x): **4 (2)**

2C genome size [Mbp]: **800.57**

1Cx monoploid genome size [Mbp]: **200.14**



Genomic GC content: **39 %**

Taxon origin

Origin in the Czech Republic: **native**

Ecological indicator values

Ellenberg-type indicator values

Light indicator value: **7 - half-light plant, mostly occurring at full light, but also in the shade up to about 30% of diffuse radiation incident in an open area**

Temperature indicator value: **4 - transition between values 3 and 5**

Moisture indicator value: **3 - missing on damp soil**

Reaction indicator value: **8 - transition between values 7 and 9, occurring mostly in calcium-rich conditions**

Nutrient indicator value: **2 - transition between values 1 and 3**

Salinity indicator value: **0 - not salt tolerant, glycophyte**

Habitat and sociology

Occurrence in habitats

1 Vegetation of cliffs, screes and walls

1A Calcareous cliffs: **1 - rare occurrence**

1B Siliceous cliffs and block fields: **2 - optimum**

8 Dry grasslands

8A Hercynian dry grasslands on rock outcrops: **2 - optimum**

8B Submediterranean dry grasslands on rock outcrops: **2 - optimum**

11 Heathlands and scrub

11L Tall mesic and xeric shrub: **1 - rare occurrence**

11N Low xeric scrub: **1 - rare occurrence**

12 Forests

12C Oak-hornbeam forests: **1 - rare occurrence**

12D Ravine forests: **1 - rare occurrence**

12H Peri-Alpidic basiphilous thermophilous oak forests: **1 - rare occurrence**

12J Acidophilous thermophilous oak forests: **1 - rare occurrence**

12L Boreo-continental pine forests: **2 - optimum**

12W Pine and larch plantations: **1 - rare occurrence**

Affinity to the forest environment

Affinity to the forest environment in Thermophyticum: **2.2 - taxon occurring partly in the forest, but mainly in open vegetation**

Affinity to the forest environment in Mesophyticum and Oreophyticum: **2.2 - taxon occurring partly in the forest, but mainly in open vegetation**

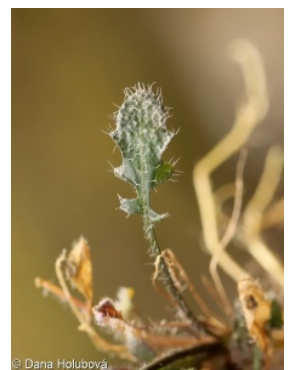
Diagnostic taxon

Diagnostic taxon of alliances: **[THC *Diantho lumnitzeri*-Seslerion](#)**

Diagnostic taxon of associations: **[THC03 *Saxifrago paniculatae*-Seslerietum caeruleae](#)**

Ecological specialization indices

Ecological specialization index for all vegetation types: **4.4**



Ecological specialization index for non-forest vegetation: **4.1**

Ecological specialization index for forest vegetation: **5.4**

Distribution and frequency

Floristic zone: **boreal, northern temperate, southern temperate**

Floristic region: **Europe**

Continentality degree: **6**

Distribution range extension along the continentality gradient: **6**

Elevational belt in the Czech Republic: **colline belt**

Occurrence frequency in the basic grid mapping cells and quadrants of the basic grid mapping cells: **25**

taxon.data.freq_in_quad: **34**

Commonness in vegetation plots from the Czech Republic

Occurrence frequency in vegetation plots: **0 %**

Occurrence frequency in vegetation plots with a cover above 5%: **0 %**

Occurrence frequency in vegetation plots with a cover above 25%: **0 %**

Occurrence frequency in vegetation plots with a cover above 50%: **0 %**

Mean percentage cover in vegetation plots: **2 %**

Maximum percentage cover in vegetation plots: **3 %**

Number of habitats with taxon occurrence in the Czech Republic

Number of narrow habitats in which the taxon occurs: **12**

Number of narrow habitats in which the taxon has its optimum: **4**

Number of broad habitats in which the taxon occurs: **4**

Number of broad habitats in which the taxon has its optimum: **3**

Threats and protection

Red List 2017 (national categories): **C2r - endangered taxon, rare**

Red List 2017 (IUCN categories): **VU - vulnerable**

Legal protection: **critically threatened taxon**

