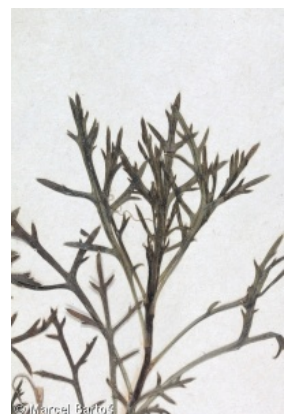
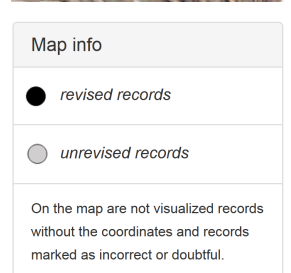
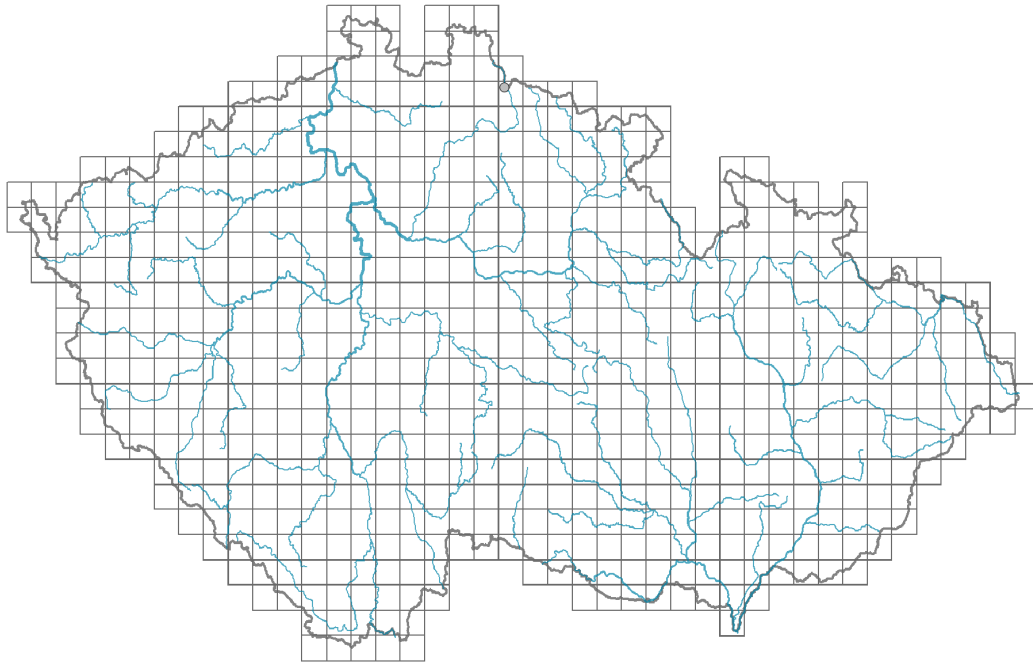


Argyranthemum frutescens

Distribution



Habitus and growth type

Height [m]: **0.2-1.2**

Growth form: **dwarf shrub**

Life form: **chamaephyte**

Leaf

Leaf presence and metamorphosis: **leaves present, not modified**

Leaf arrangement (phyllotaxis): **alternate**

Leaf shape: **simple - pinnately divided**

Stipules: **absent**

Petiole: **present**

Functional leaf type in woody plants: **special type**

Flower

Flowering period [month]: **June-August**

Flower colour: **white, yellow**

Flower symmetry: **actinomorphic, zygomorphic**

Perianth type: **calyx sometimes absent, corolla present**

Perianth fusion: **fused**

Shape of the sympetalous corolla or syntepalous perianth: **ligulate, tubular**

Calyx fusion: **synsepalous**

Inflorescence type: **corymbus ex anthodiis compositus**

Fruit, seed and dispersal

Fruit type: **dry fruit - achene/cypsela/samara**

Trophic mode

Parasitism and mycoheterotrophy: **autotrophic**

Carnivory: **non-carnivorous**

Symbiotic nitrogen fixation: **no nitrogen-fixing symbionts**

Taxon origin

Origin in the Czech Republic: **cultivated only**

Habitat and sociology

Affinity to the forest environment

Affinity to the forest environment in Thermophyticum: **0 - taxon that does not spontaneously occur in Czech forests**

Affinity to the forest environment in Mesophyticum and Oreophyticum: **0 - taxon that does not spontaneously occur in Czech forests**

Threats and protection

Red List 2017 (national categories): **taxon is not on the Red List**

Red List 2017 (IUCN categories): **LC(NA) - least concern (taxon is not on the Red List)**

Legal protection: **not protected by law**