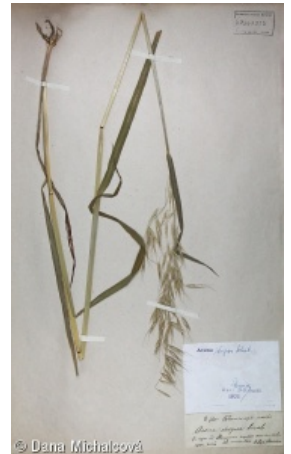
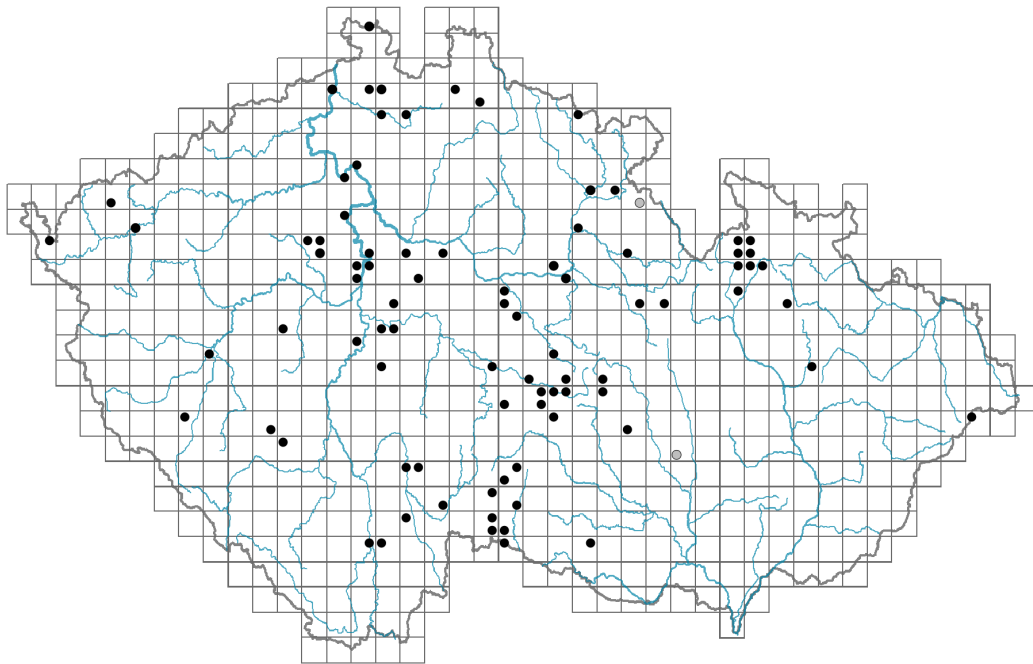


# *Avena strigosa*

## Distribution



### Map info

● revised records

● unrevised records

On the map are not visualized records without the coordinates and records marked as incorrect or doubtful.

## Habitus and growth type

Height [m]: **0.4**

Growth form: **annual herb**

Life form: **therophyte**

Life strategy (Pierce method based on leaf traits): **CR/CSR**

Life strategy (Pierce method, C-score): **36.7 %**

Life strategy (Pierce method, S-score): **19 %**

Life strategy (Pierce method, R-score): **44.3 %**



## Leaf

Leaf presence and metamorphosis: **leaves present, not modified**

Leaf arrangement (phyllotaxis): **alternate**

Leaf shape: **simple - entire**

Stipules: **absent**

Petiole: **absent**

## Flower

Flowering period [month]: **June-August**

Flower colour: **green**

Perianth type: **reduced**

Perianth fusion: **reduced**



Inflorescence type: **panicula e spiculis composita**

## Fruit, seed and dispersal

Fruit type: **dry fruit - caryopsis**

Dispersal unit (diaspore): **fruit, infrutescence or its part**

Dispersal strategy: **Allium (mainly autochory)**

Myrmecochory: **non-myrmecochorous (b)**

## Trophic mode

Parasitism and mycoheterotrophy: **autotrophic**

Carnivory: **non-carnivorous**

Symbiotic nitrogen fixation: **no nitrogen-fixing symbionts**

## Taxon origin

Origin in the Czech Republic: **archaeophyte**

Invasion status: **casual**

Geographic origin: **Europe**

Year of the last record: **1946**

Period of introduction: **Neolithic (5600-4200 BCE)**

Introduction pathway: **intentional - crops, unintentional - agriculture, unintentional - anthropogenic**

## Habitat and sociology

Occurrence in habitats

13 Anthropogenic vegetation

13A Annual vegetation of ruderal habitats: **1 - rare occurrence**

13B Annual vegetation of arable land: **1 - rare occurrence**

Affinity to the forest environment

Affinity to the forest environment in Thermophyticum: **0 - taxon that does not spontaneously occur in Czech forests**

Affinity to the forest environment in Mesophyticum and Oreophyticum: **0 - taxon that does not spontaneously occur in Czech forests**

## Distribution and frequency

Elevational belt in the Czech Republic: **lowlands, colline belt, submontane belt, montane belt**

Occurrence frequency in the basic grid mapping cells and quadrants of the basic grid mapping cells: 73

taxon.data.freq\_in\_quad: 88

Number of habitats with taxon occurrence in the Czech Republic

Number of narrow habitats in which the taxon occurs: **2**

Number of narrow habitats in which the taxon has its optimum: **0**

Number of broad habitats in which the taxon occurs: **1**

Number of broad habitats in which the taxon has its optimum: **0**

## **Threats and protection**

Red List 2017 (national categories): **A1 - extinct taxon**

Red List 2017 (IUCN categories): **RE - regionally extinct**

Legal protection: **not protected by law**