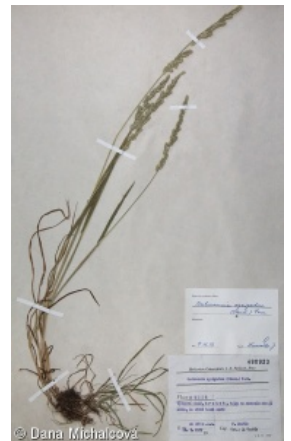
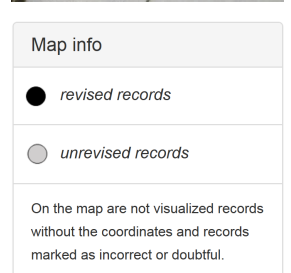
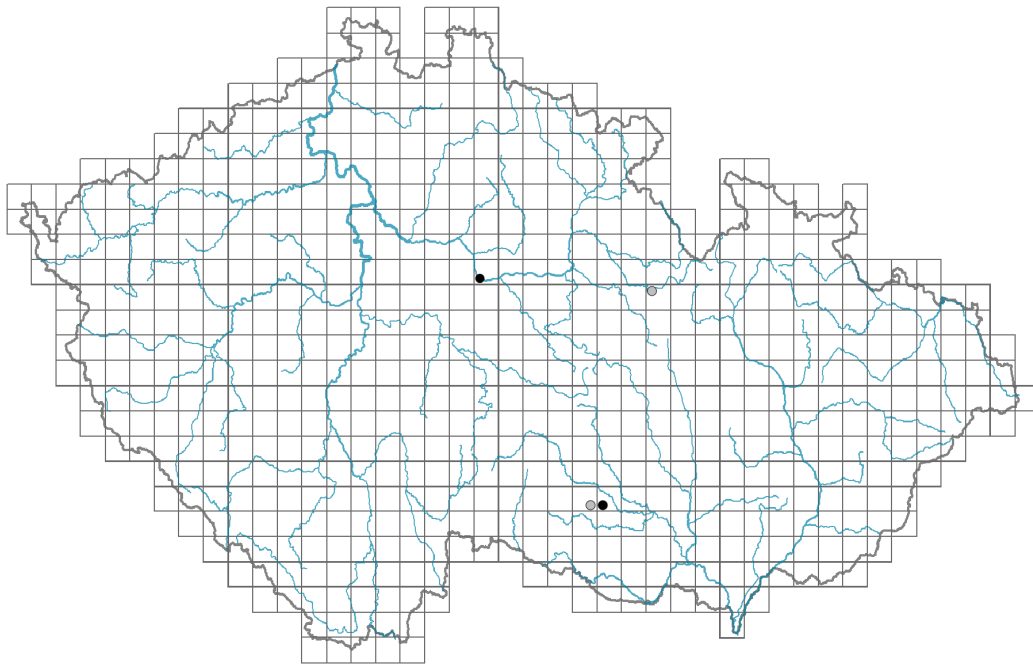


Beckmannia syzigachne

Distribution



Habitus and growth type

Height [m]: **0.3-1.2**

Life form: **therophyte**

Leaf

Leaf presence and metamorphosis: **leaves present, not modified**

Leaf arrangement (phyllotaxis): **alternate**

Leaf shape: **simple - entire**

Stipules: **absent**

Petiole: **absent**

Flower

Flowering period [month]: **June-August**

Flower colour: **green**

Perianth type: **reduced**

Perianth fusion: **reduced**

Inflorescence type: **spica e spiculis composita**

Fruit, seed and dispersal

Fruit type: **dry fruit - caryopsis**

Myrmecochory: **non-myrmecochorous (b)**

Trophic mode

Parasitism and mycoheterotrophy: **autotrophic**

Carnivory: **non-carnivorous**

Symbiotic nitrogen fixation: **no nitrogen-fixing symbionts**

Taxon origin

Origin in the Czech Republic: **neophyte**

Invasion status: **casual**

Geographic origin: **North America, Asia**

Year of the first record in the wild: **1994**

Period of introduction: **Recent Past (1950-2000)**

Introduction pathway: **unintentional - anthropogenic, unintentional - nature**

Ecological indicator values

Ellenberg-type indicator values

Light indicator value: **7 - half-light plant, mostly occurring at full light, but also in the shade up to about 30% of diffuse radiation incident in an open area**

Temperature indicator value: **7 - heat indicator, occurring in relatively warm lowlands**

Moisture indicator value: **9 - wetness indicator, focus on often soaked, poorly aerated soils**

Reaction indicator value: **7 - indicator of slightly acidic to slightly basic conditions, never occurring in very acidic conditions**

Nutrient indicator value: **3 - occurring at nutrient-poor sites more frequently than at average sites and exceptionally at rich sites**

Salinity indicator value: **0 - not salt tolerant, glycophyte**

Habitat and sociology

Affinity to the forest environment

Affinity to the forest environment in Thermophyticum: **0 - taxon that does not spontaneously occur in Czech forests**

Affinity to the forest environment in Mesophyticum and Oreophyticum: **0 - taxon that does not spontaneously occur in Czech forests**

Threats and protection

Red List 2017 (national categories): **taxon is not on the Red List**

Red List 2017 (IUCN categories): **LC(NA) - least concern (taxon is not on the Red List)**

Legal protection: **not protected by law**