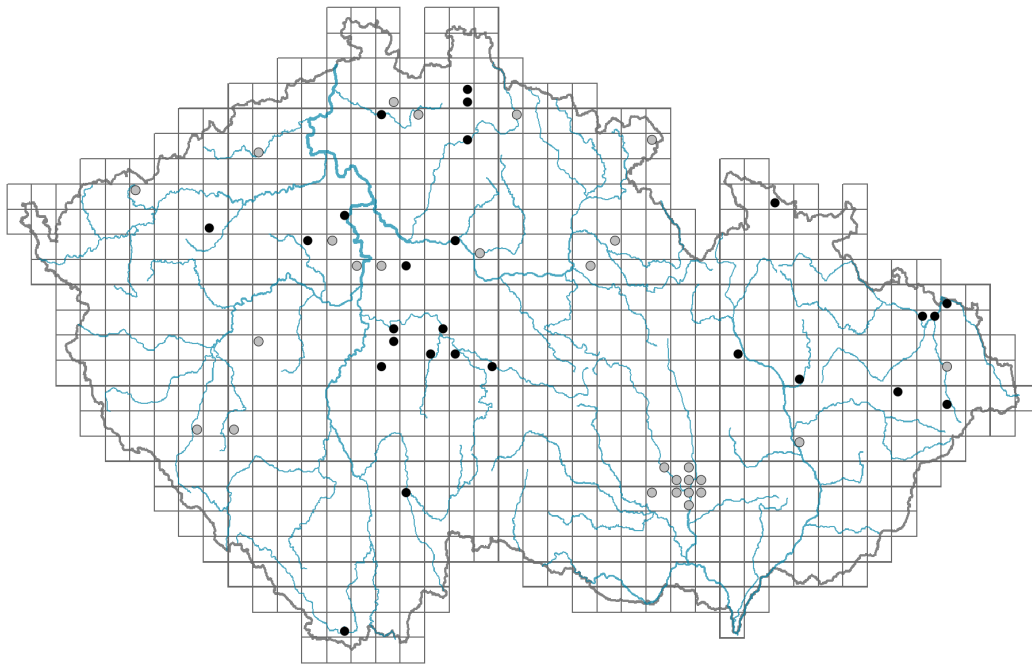


Berberis thunbergii

Distribution

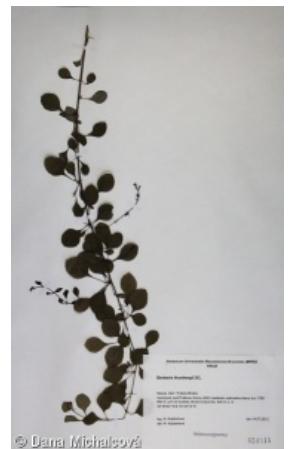


Map info

● revised records

● unrevised records

On the map are not visualized records without the coordinates and records marked as incorrect or doubtful.



Habitus and growth type

Height [m]: **0.5-2**

Growth form: **shrub**

Life form: **nanophanerophyte**

Life strategy: **C - competitor**

Leaf

Leaf presence and metamorphosis: **leaves present, not modified**

Leaf arrangement (phyllotaxis): **alternate**

Leaf shape: **simple - entire**

Stipules: **absent**

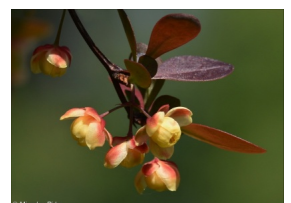
Petiole: **present**

Leaf life span: **summer green**

Leaf deciduousness in woody plants: **winter deciduous**

Leaf anatomy: **scleromorphic, mesomorphic**

Functional leaf type in woody plants: **broad deciduous or semi-deciduous**



Flower

Flowering period [month]: **April-June**

Flower colour: **yellow**

Flower symmetry: **actinomorphic**

Perianth type: **calyx and corolla**
 Perianth fusion: **free**
 Calyx fusion: **aposepalous**
 Inflorescence type: **racemus**
 Dicliny: **synoecious**
 Pollination syndrome: **insect-pollination, selfing**



Fruit, seed and dispersal

Fruit type: **fleshy fruit - berry**
 Fruit colour: **red**
 Reproduction type: **only by seed/spores**
 Dispersal unit (diaspore): **seed, fruit, infructescence or its part**
 Dispersal strategy: **Cornus (mainly autochory and endozoochory)**
 Myrmecochory: **non-myrmecochorous (b)**



Trophic mode

Parasitism and mycoheterotrophy: **autotrophic**
 Carnivory: **non-carnivorous**
 Symbiotic nitrogen fixation: **no nitrogen-fixing symbionts**

Taxon origin

Origin in the Czech Republic: **neophyte**
 Invasion status: **casual**
 Geographic origin: **Asia**
 Year of the first record in the wild: **2011**
 Period of introduction: **Present (after 2000)**
 Introduction pathway: **intentional - ornamental**



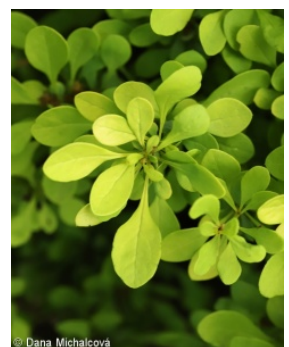
Habitat and sociology

Affinity to the forest environment
 Affinity to the forest environment in Thermophyticum: **0 - taxon that does not spontaneously occur in Czech forests**
 Affinity to the forest environment in Mesophyticum and Oreophyticum: **0 - taxon that does not spontaneously occur in Czech forests**



Distribution and frequency

Floristic zone: **submeridional, meridional**
 Floristic region: **Eastern Asia**
 Occurrence frequency in the basic grid mapping cells and quadrants of the basic grid mapping cells: 49
 taxon.data.freq_in_quad: 55



Threats and protection

Red List 2017 (national categories): **taxon is not on the Red List**

Red List 2017 (IUCN categories): **LC(NA) - least concern (taxon is not on the Red List)**

Legal protection: **not protected by law**

