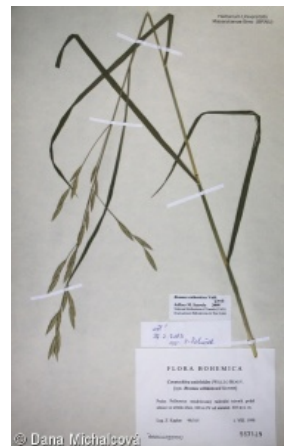
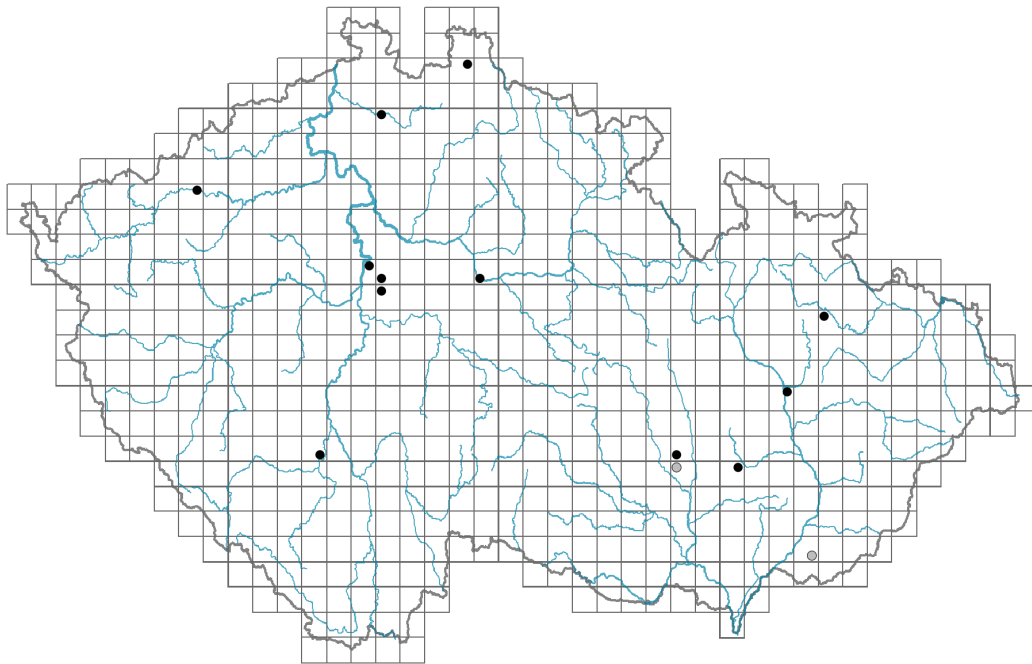


# *Bromus catharticus*

## Distribution



### Map info

● revised records

● unrevised records

On the map are not visualized records without the coordinates and records marked as incorrect or doubtful.

## Habitus and growth type

Height [m]: **0.4-1**

Life form: **therophyte (hemicryptophyte)**

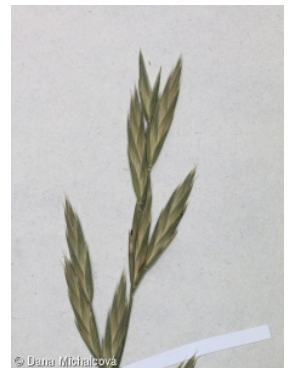
Life strategy: **CR - competitor/ruderal**

Life strategy (Pierce method based on leaf traits): **S/CSR**

Life strategy (Pierce method, C-score): **31.3 %**

Life strategy (Pierce method, S-score): **45.4 %**

Life strategy (Pierce method, R-score): **23.3 %**



## Leaf

Leaf presence and metamorphosis: **leaves present, not modified**

Leaf arrangement (phyllotaxis): **alternate**

Leaf shape: **simple - entire**

Stipules: **absent**

Petiole: **absent**



## Flower

Flowering period [month]: **May-July**

Flower colour: **green**

Perianth type: **reduced**

Perianth fusion: **reduced**

Inflorescence type: **panicula e spiculis composita**

Dicliny: **synoecious**

Generative reproduction type: **autogamy**

Pollination syndrome: **selfing**

## Fruit, seed and dispersal

Fruit type: **dry fruit - caryopsis**

Reproduction type: **by seed/spores and vegetatively**

Dispersal unit (diaspore): **fruit, infrutescence or its part**

Dispersal strategy: **Allium (mainly autochory)**

Myrmecochory: **non-myrmecochorous (b)**



## Belowground organs and clonality

Shoot metamorphosis: **rhizome**

Storage organ: **rhizome, tuft**

## Trophic mode

Parasitism and mycoheterotrophy: **autotrophic**

Carnivory: **non-carnivorous**

Symbiotic nitrogen fixation: **no nitrogen-fixing symbionts**

## Taxon origin

Origin in the Czech Republic: **neophyte**

Invasion status: **casual**

Geographic origin: **South America**

Year of the first record in the wild: **1853**

Period of introduction: **Late Modern Period (1800-1950)**

Introduction pathway: **intentional - collections, unintentional - plantations, unintentional - industry**

## Habitat and sociology

Affinity to the forest environment

Affinity to the forest environment in Thermophyticum: **0 - taxon that does not spontaneously occur in Czech forests**

Affinity to the forest environment in Mesophyticum and Oreophyticum: **0 - taxon that does not spontaneously occur in Czech forests**

## Distribution and frequency

Floristic zone: **subtropical, tropical, austral or antarctic**

Floristic region: **Americas**

Occurrence frequency in the basic grid mapping cells and quadrants of the basic grid mapping cells: **14**

taxon.data.freq\_in\_quad: **14**

## **Threats and protection**

Red List 2017 (national categories): **taxon is not on the Red List**

Red List 2017 (IUCN categories): **LC(NA) - least concern (taxon is not on the Red List)**

Legal protection: **not protected by law**