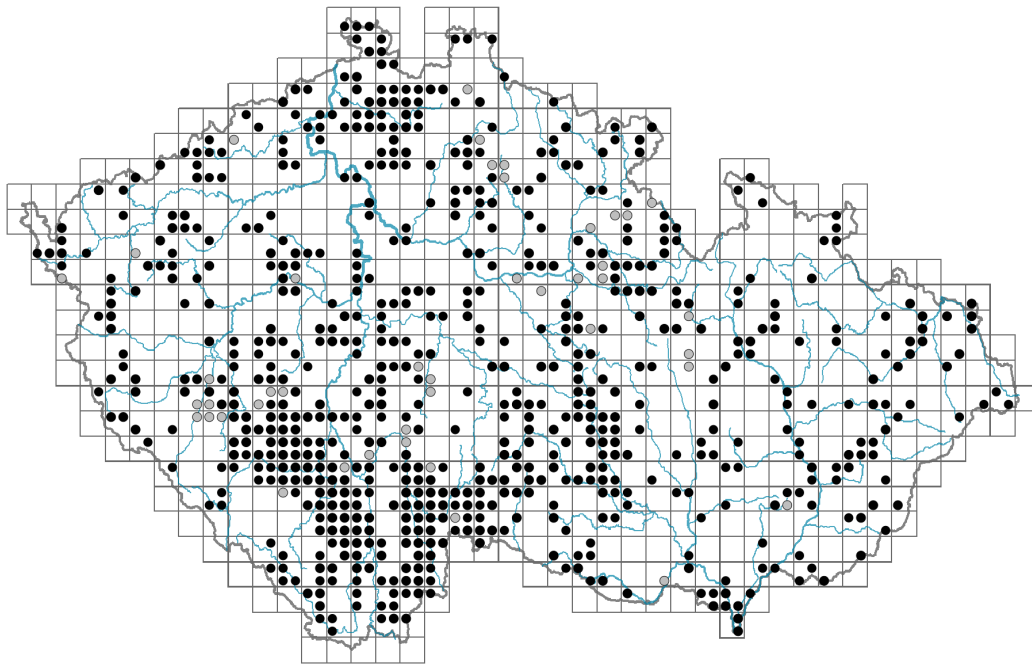


Callitriche palustris

Distribution



Map info

● revised records

● unrevised records

On the map are not visualized records without the coordinates and records marked as incorrect or doubtful.

Habitus and growth type

Height [m]: **0.01-0.7**

Growth form: **clonal herb**

Life form: **therophyte**

Life strategy (Pierce method based on leaf traits): **R**

Life strategy (Pierce method, C-score): **2.6 %**

Life strategy (Pierce method, S-score): **0 %**

Life strategy (Pierce method, R-score): **97.4 %**

Leaf

Leaf presence and metamorphosis: **leaves present, not modified**

Leaf arrangement (phyllotaxis): **opposite**

Leaf shape: **simple - entire**

Stipules: **absent**

Petiole: **absent**

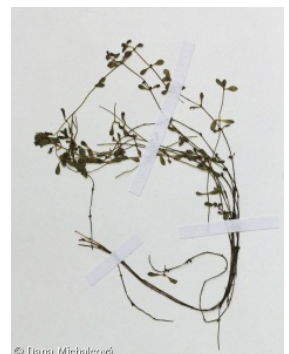
Leaf life span: **evergreen**

Leaf anatomy: **helomorphic**

Flower

Flowering period [month]: **May-November**

Flower colour: **green**



Perianth type: **flower achlamydeous**
Inflorescence type: **flores solitarii**
Dicliny: **monoecious**
Generative reproduction type: **autogamy, facultative autogamy**
Pollination syndrome: **wind-pollination, geitonogamy**

Fruit, seed and dispersal

Fruit type: **dry fruit - cluster of four one-seeded nutlets**
Fruit colour: **black**
Reproduction type: **by seed/spores and vegetatively**
Dispersal unit (diaspore): **fruit, infrutescence or its part, shoot fragment**
Dispersal strategy: **Sparganium (mainly autochory and hydrochory)**
Myrmecochory: **non-myrmecochorous (b)**

Belowground organs and clonality

Shoot metamorphosis: **stolon**
Storage organ: **stolon**
Type of clonal growth organ: **stolon**
Freely dispersible organs of clonal growth: **absent**
Shoot life span (cyclicity): **monocyclic shoots prevailing**
Branching type of stem-derived organs of clonal growth: **monopodial**
Primary root: **absent**
Persistence of the clonal growth organ [year]: **1**
Number of clonal offspring: **6**
Lateral spreading distance by clonal growth [m]: **0.13**
Clonal index: **5**
Bud bank
Number of buds per shoot at the soil surface (root buds excluded): **5**
Number of buds per shoot at a depth of 0–10 cm (root buds excluded): **0**
Number of buds per shoot at a depth greater than 10 cm (root buds excluded): **0**
Size of the belowground bud bank (root buds excluded): **5**
Depth of the belowground bud bank (root buds excluded) [cm]: **1**
Number of buds per shoot at the soil surface (root buds included): **5**
Number of buds per shoot at a depth of 0–10 cm (root buds included): **0**
Number of buds per shoot at a depth greater than 10 cm (root buds included): **0**
Size of the belowground bud bank (root buds included): **5**
Depth of the belowground bud bank (root buds included) [cm]: **1**

Trophic mode

Parasitism and mycoheterotrophy: **autotrophic**
Carnivory: **non-carnivorous**
Symbiotic nitrogen fixation: **no nitrogen-fixing symbionts**

Karyology

Chromosome number (2n): **20**

Ploidy level (x): **4**

2C genome size [Mbp]: **3034.85**

1Cx monoploid genome size [Mbp]: **758.71**

Genomic GC content: **38.6 %**

Taxon origin

Origin in the Czech Republic: **native**

Ecological indicator values

Ellenberg-type indicator values

Light indicator value: **6 - transition between values 5 and 7; rarely at less than 20% of diffuse radiation incident in an open area**

Temperature indicator value: **5 - moderate heat indicator, occurring from lowland to montane belt, mainly in submontane-temperate areas**

Moisture indicator value: **11 - aquatic plant rooted under water, but at least temporarily with leaves above the surface, or a plant floating on the water surface**

Reaction indicator value: **5 - indicator of moderate acidity, occurring rarely in strongly acidic as well as in neutral to alkaline conditions**

Nutrient indicator value: **6 - transition between values 5 and 7**

Salinity indicator value: **0 - not salt tolerant, glycophyte**

Habitat and sociology

Occurrence in habitats

3 Aquatic vegetation

3A Macrophytic vegetation of eutrophic and mesotrophic still waters: **2 - optimum**

3C Macrophytic vegetation of oligotrophic lakes and pools: **1 - rare occurrence**

4 Wetland and riverine herbaceous vegetation

4A Reed-beds of eutrophic still waters: **1 - rare occurrence**

4C Eutrophic vegetation of muddy substrata: **1 - rare occurrence**

4E Reed vegetation of brooks: **1 - rare occurrence**

4G Tall-sedge beds: **1 - rare occurrence**

4H Vegetation of low annual hygrophilous herbs: **1 - rare occurrence**

4I Vegetation of nitrophilous annual hygrophilous herbs: **1 - rare occurrence**

11 Heathlands and scrub

11I Willow carrs: **1 - rare occurrence**

12 Forests

12A Alder carrs: **1 - rare occurrence**

12B Alluvial forests: **1 - rare occurrence**

Affinity to the forest environment

Affinity to the forest environment in Thermophyticum: **2.2 - taxon occurring partly in the forest, but mainly in open vegetation**

Affinity to the forest environment in Mesophyticum and Oreophyticum: **2.2 - taxon occurring partly in the forest, but mainly in open vegetation**

Diagnostic taxon

Diagnostic taxon of classes: [MA Isoëto-Nano-Juncetea](#)

Diagnostic taxon of alliances: [MAA Eleocharition ovatae](#)

Diagnostic taxon of associations: [MAA01 Polygono-Eleocharitetum ovatae](#)

Constant taxon

Constant taxon of classes: [MA Isoëto-Nano-Juncetea](#)

Constant taxon of alliances: [MAA Eleocharition ovatae](#)

Constant taxon of associations: [MAA01 Polygono-Eleocharitetum ovatae](#), [VCA02 Charetum braunii](#)

Dominant taxon

Dominant taxon of associations: [MAA01 Polygono-Eleocharitetum ovatae](#), [MBA05 Corrigiolo littoralis-Bidentetum radiatae](#)

Distribution and frequency

Floristic zone: **arctic, boreal, northern temperate, southern temperate, submeridional, meridional, subtropical, tropical**

Floristic region: **Asia, Africa, circumpolar**

Distribution range extension along the continentality gradient: **7**

Elevational belt in the Czech Republic: **lowlands, colline belt, submontane belt (montane belt)**

Occurrence frequency in the basic grid mapping cells and quadrants of the basic grid mapping cells: **472**

taxon.data.freq_in_quad: **979**

Number of habitats with taxon occurrence in the Czech Republic

Number of narrow habitats in which the taxon occurs: **11**

Number of narrow habitats in which the taxon has its optimum: **1**

Number of broad habitats in which the taxon occurs: **4**

Number of broad habitats in which the taxon has its optimum: **1**

Threats and protection

Red List 2017 (national categories): **taxon is not on the Red List**

Red List 2017 (IUCN categories): **LC(NA) - least concern (taxon is not on the Red List)**

Legal protection: **not protected by law**