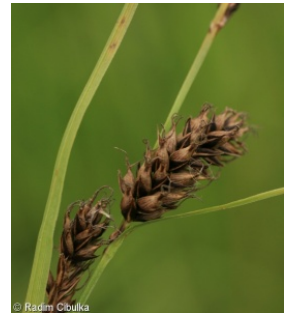
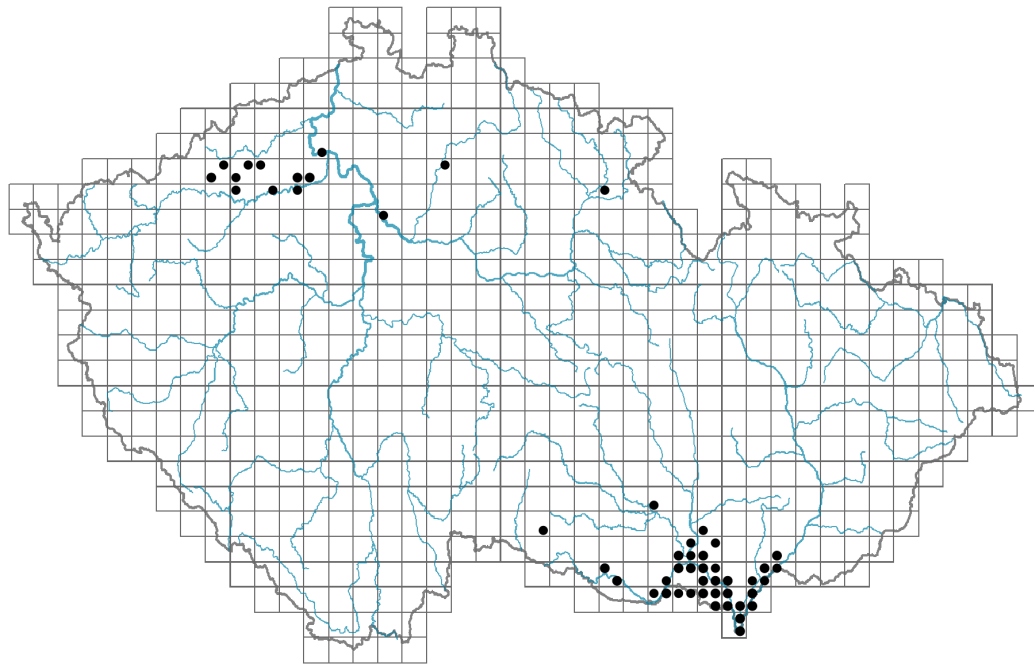


# Carex melanostachya

## Distribution



### Map info

● revised records

● unrevised records

On the map are not visualized records without the coordinates and records marked as incorrect or doubtful.



## Habitus and growth type

Height [m]: **0.2-0.6**

Growth form: **clonal herb**

Life form: **hemicryptophyte (geophyte)**

Life strategy: **CS - competitor/stress-tolerator**

## Leaf

Leaf presence and metamorphosis: **leaves present, not modified**

Leaf arrangement (phyllotaxis): **alternate**

Leaf shape: **simple - entire**

Stipules: **absent**

Petiole: **absent**

Leaf life span: **summer green**



## Flower

Flowering period [month]: **May-June**

Flower colour: **black**

Perianth type: **flower achlamydeous**

Inflorescence type: **spica e spiculis composita**

Dicliny: **monoecious**

Generative reproduction type: **mixed mating**

Pollination syndrome: **wind-pollination**

## Fruit, seed and dispersal

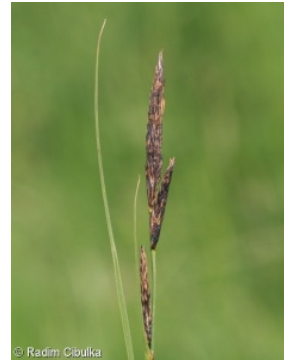
Fruit type: **dry fruit - nut enclosed in an utricle**

Fruit colour: **brown, grey**

Reproduction type: **by seed/spores and vegetatively**

Dispersal unit (diaspore): **fruit, infructescence or its part**

Dispersal strategy: **Allium (mainly autochory)**



## Belowground organs and clonality

Shoot metamorphosis: **stolon, rhizome**

Storage organ: **stolon, rhizome**

Type of clonal growth organ: **hypogeogenous rhizome**

Freely dispersible organs of clonal growth: **absent**

Shoot life span (cyclicity): **dicyclic or polycyclic shoots prevailing**

Branching type of stem-derived organs of clonal growth: **sympodial**

Primary root: **absent**

Persistence of the clonal growth organ [year]: **4**

Number of clonal offspring: **1**

Lateral spreading distance by clonal growth [m]: **0.07**

Clonal index: **4**

### Bud bank

Number of buds per shoot at the soil surface (root buds excluded): **5**

Number of buds per shoot at a depth of 0–10 cm (root buds excluded): **15**

Number of buds per shoot at a depth greater than 10 cm (root buds excluded): **0**

Size of the belowground bud bank (root buds excluded): **20**

Depth of the belowground bud bank (root buds excluded) [cm]: **4**

Number of buds per shoot at the soil surface (root buds included): **5**

Number of buds per shoot at a depth of 0–10 cm (root buds included): **15**

Number of buds per shoot at a depth greater than 10 cm (root buds included): **0**

Size of the belowground bud bank (root buds included): **20**

Depth of the belowground bud bank (root buds included) [cm]: **4**



## Trophic mode

Parasitism and mycoheterotrophy: **autotrophic**

Carnivory: **non-carnivorous**

Symbiotic nitrogen fixation: **no nitrogen-fixing symbionts**

## Karyology

Chromosome number (2n): **54**

Ploidy level (x): **2**

2C genome size [Mbp]: **734.07**

1Cx monoploid genome size [Mbp]: **367.03**

Genomic GC content: **35.7 %**

## Taxon origin

Origin in the Czech Republic: **native**

## Ecological indicator values

Ellenberg-type indicator values

Light indicator value: **7 - half-light plant, mostly occurring at full light, but also in the shade up to about 30% of diffuse radiation incident in an open area**

Temperature indicator value: **6 - transition between values 5 and 7**

Moisture indicator value: **8 - transition between values 7 and 9**

Reaction indicator value: **7 - indicator of slightly acidic to slightly basic conditions, never occurring in very acidic conditions**

Nutrient indicator value: **6 - transition between values 5 and 7**

Salinity indicator value: **2 - oligohaline, often on soils with very low salt content**

## Habitat and sociology

Occurrence in habitats

4 Wetland and riverine herbaceous vegetation

4A Reed-beds of eutrophic still waters: **1 - rare occurrence**

4B Halophilous reed and sedge beds: **1 - rare occurrence**

4G Tall-sedge beds: **2 - optimum**

6 Meadows and mesic pastures

6D Alluvial meadows of lowland rivers: **2 - optimum**

6F Intermittently wet Molinia meadows: **1 - rare occurrence**

6G Vegetation of wet disturbed soils: **1 - rare occurrence**

8 Dry grasslands

8D Broad-leaved dry grasslands: **1 - rare occurrence**

10 Saline vegetation

10I Inland saline meadows: **2 - optimum**

Affinity to the forest environment

Affinity to the forest environment in Thermophyticum: **0 - taxon that does not spontaneously occur in Czech forests**

Affinity to the forest environment in Mesophyticum and Oreophyticum: **0 - taxon that does not spontaneously occur in Czech forests**

Diagnostic taxon

Diagnostic taxon of associations: [TDE03 \*Lathyro palustris\*-\*Gratioletum officinalis\*](#), [TDE04 \*Cnidio dubii\*-\*Deschampsietum cespitosae\*](#)

Ecological specialization indices

Ecological specialization index for all vegetation types: **5.8**

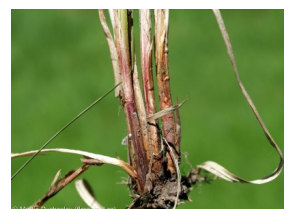
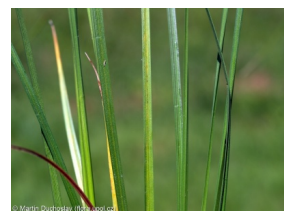
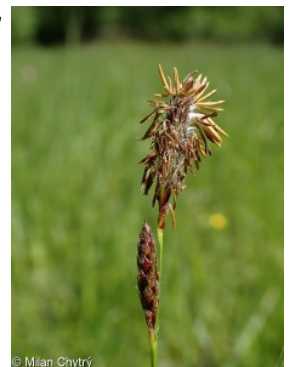
Ecological specialization index for non-forest vegetation: **5.8**

Colonization ability

Index of colonization success (ICS): **1**

## Distribution and frequency

Floristic zone: **southern temperate, submeridional, meridional**



Floristic region: **Europe, Western Asia**

Continentality degree: **8**

Distribution range extension along the continentality gradient: **7**

Elevational belt in the Czech Republic: **lowlands**

Occurrence frequency in the basic grid mapping cells and quadrants of the basic grid mapping cells: **31**

taxon.data.freq\_in\_quad: **53**

Commonness in vegetation plots from the Czech Republic

Occurrence frequency in vegetation plots: **0.1 %**

Occurrence frequency in vegetation plots with a cover above 5%: **21.1 %**

Occurrence frequency in vegetation plots with a cover above 25%: **5.3 %**

Occurrence frequency in vegetation plots with a cover above 50%: **0 %**

Mean percentage cover in vegetation plots: **5.8 %**

Maximum percentage cover in vegetation plots: **38 %**

Number of habitats with taxon occurrence in the Czech Republic

Number of narrow habitats in which the taxon occurs: **8**

Number of narrow habitats in which the taxon has its optimum: **3**

Number of broad habitats in which the taxon occurs: **4**

Number of broad habitats in which the taxon has its optimum: **3**

## Threats and protection

Red List 2017 (national categories): **C2t - endangered taxon, declining**

Red List 2017 (IUCN categories): **EN - endangered**

Legal protection: **endangered taxon**

