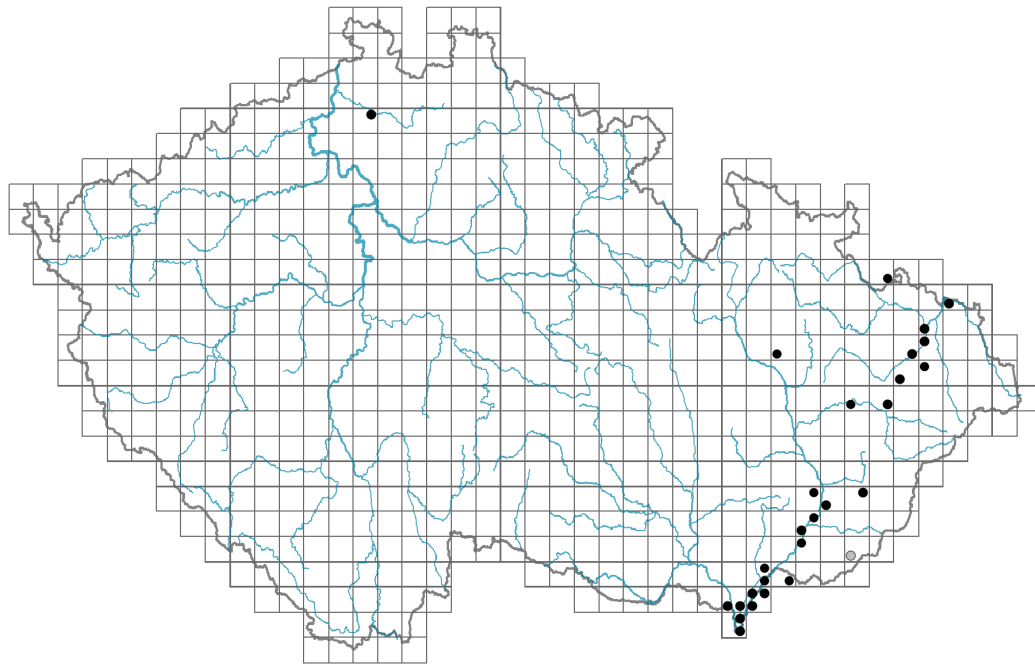


# Carex strigosa

## Distribution



© Petr Kouřilský

### Map info

● revised records

● unrevised records

On the map are not visualized records without the coordinates and records marked as incorrect or doubtful.



© R. Štěpán

## Habitus and growth type

Height [m]: **0.3-1**

Growth form: **clonal herb**

Life form: **hemicryptophyte**

Life strategy: **CS - competitor/stress-tolerator**

Life strategy (Pierce method based on leaf traits): **CR**

Life strategy (Pierce method, C-score): **43.2 %**

Life strategy (Pierce method, S-score): **0 %**

Life strategy (Pierce method, R-score): **56.8 %**

## Leaf

Leaf presence and metamorphosis: **leaves present, not modified**

Leaf arrangement (phyllotaxis): **alternate**

Leaf shape: **simple - entire**

Stipules: **absent**

Petiole: **absent**

Leaf life span: **evergreen**

Leaf anatomy: **mesomorphic, hygromorphic**



© Dana Michalčová



© Radim Cibulka

## Flower

Flowering period [month]: **May-June**

Flowering phase: **4 Fagus sylvatica-Galeobdolon (start of mid-spring)**

Flower colour: **green**

Perianth type: **flower achlamydeous**

Inflorescence type: **spica e spiculis composita**

Dicliny: **monoecious**

Generative reproduction type: **facultative allogamy**

Pollination syndrome: **wind-pollination**

## Fruit, seed and dispersal

Fruit type: **dry fruit - nut enclosed in an utricle**

Fruit colour: **brown**

Reproduction type: **by seed/spores and vegetatively**

Dispersal unit (diaspore): **fruit, infrutescence or its part**

Dispersal strategy: **Allium (mainly autochory)**

Myrmecochory: **probably myrmecochorous**

## Belowground organs and clonality

Shoot metamorphosis: **stolon, rhizome**

Storage organ: **stolon, rhizome**

Type of clonal growth organ: **hypogeogenous rhizome**

Freely dispersible organs of clonal growth: **absent**

Shoot life span (cyclicity): **dicyclic or polycyclic shoots prevailing**

Branching type of stem-derived organs of clonal growth: **sympodial**

Primary root: **absent**

Persistence of the clonal growth organ [year]: **4**

Number of clonal offspring: **3.5**

Lateral spreading distance by clonal growth [m]: **0.07**

Clonal index: **5**

## Bud bank

Number of buds per shoot at the soil surface (root buds excluded): **5**

Number of buds per shoot at a depth of 0–10 cm (root buds excluded): **15**

Number of buds per shoot at a depth greater than 10 cm (root buds excluded): **0**

Size of the belowground bud bank (root buds excluded): **20**

Depth of the belowground bud bank (root buds excluded) [cm]: **4**

Number of buds per shoot at the soil surface (root buds included): **5**

Number of buds per shoot at a depth of 0–10 cm (root buds included): **15**

Number of buds per shoot at a depth greater than 10 cm (root buds included): **0**

Size of the belowground bud bank (root buds included): **20**

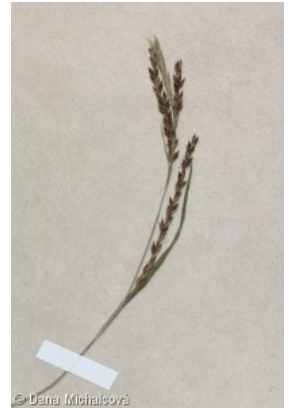
Depth of the belowground bud bank (root buds included) [cm]: **4**

## Trophic mode

Parasitism and mycoheterotrophy: **autotrophic**

Carnivory: **non-carnivorous**

Symbiotic nitrogen fixation: **no nitrogen-fixing symbionts**



## Karyology

Chromosome number (2n): **66**

Ploidy level (x): **2**

2C genome size [Mbp]: **655.99**

1Cx monoploid genome size [Mbp]: **328**

Genomic GC content: **35.2 %**

## Taxon origin

Origin in the Czech Republic: **native**

## Ecological indicator values

Ellenberg-type indicator values

Light indicator value: **3 - shade plant, usually occurring where the incident radiation is less than 5% of that in an open area, but also at sunnier sites**

Temperature indicator value: **6 - transition between values 5 and 7**

Moisture indicator value: **7 - humidity indicator, focus on well moistened, but not wet soils**

Reaction indicator value: **7 - indicator of slightly acidic to slightly basic conditions, never occurring in very acidic conditions**

Nutrient indicator value: **7 - occurring at nutrient-rich sites more often than at average sites and only exceptionally at poor sites**

Salinity indicator value: **0 - not salt tolerant, glycophyte**

## Habitat and sociology

Occurrence in habitats

12 Forests

12B Alluvial forests: **2 - optimum**

Affinity to the forest environment

Affinity to the forest environment in Thermophyticum: **1.1 - taxon occurring mainly in the closed forest**

Affinity to the forest environment in Mesophyticum and Oreophyticum: **1.1 - taxon occurring mainly in the closed forest**

Diagnostic taxon

Diagnostic taxon of associations: [\*\*LBA07 Fraxino pannonicae-Ulmetum glabrae\*\*](#)

Ecological specialization indices

Ecological specialization index for all vegetation types: **7.2**

Ecological specialization index for forest vegetation: **7.4**

Colonization ability

Index of colonization success (ICS): **1**

## Distribution and frequency

Floristic zone: **northern temperate, southern temperate, submeridional**

Floristic region: **Europe**

Continentality degree: **2**

Distribution range extension along the continentality gradient: **2**

Elevational belt in the Czech Republic: **lowlands**

Occurrence frequency in the basic grid mapping cells and quadrants of the basic grid mapping cells: **22**

taxon.data.freq\_in\_quad: **28**

Commonness in vegetation plots from the Czech Republic

Occurrence frequency in vegetation plots: **0 %**

Occurrence frequency in vegetation plots with a cover above 5%: **11.1 %**

Occurrence frequency in vegetation plots with a cover above 25%: **11.1 %**

Occurrence frequency in vegetation plots with a cover above 50%: **0 %**

Mean percentage cover in vegetation plots: **5.9 %**

Maximum percentage cover in vegetation plots: **38 %**

Number of habitats with taxon occurrence in the Czech Republic

Number of narrow habitats in which the taxon occurs: **1**

Number of narrow habitats in which the taxon has its optimum: **1**

Number of broad habitats in which the taxon occurs: **1**

Number of broad habitats in which the taxon has its optimum: **1**

## Threats and protection

Red List 2017 (national categories): **C2r - endangered taxon, rare**

Red List 2017 (IUCN categories): **VU - vulnerable**

Legal protection: **not protected by law**