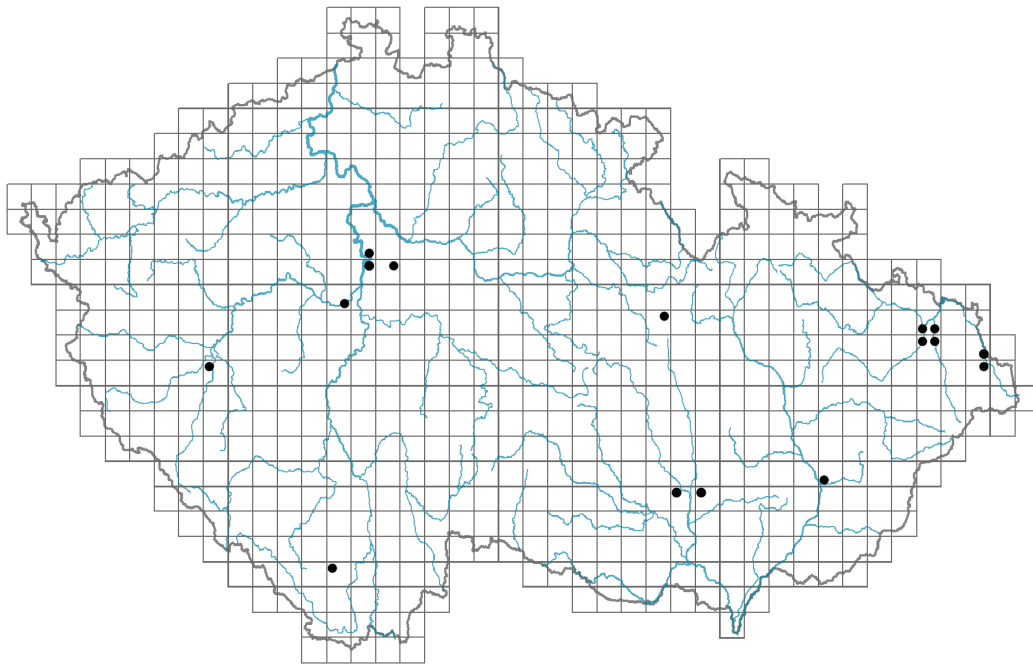


# *Centaurea diffusa*

## Distribution



© Marcel Bartoš

### Map info

● revised records

● unrevised records

On the map are not visualized records without the coordinates and records marked as incorrect or doubtful.

## Habitus and growth type

Height [m]: **0.2-0.6**

Growth form: **annual herb**

Life form: **therophyte**

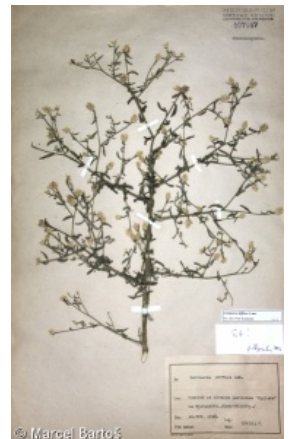
Life strategy: **R - ruderal**

Life strategy (Pierce method based on leaf traits): **CSR**

Life strategy (Pierce method, C-score): **25.3 %**

Life strategy (Pierce method, S-score): **38.1 %**

Life strategy (Pierce method, R-score): **36.6 %**



© Marcel Bartoš

## Leaf

Leaf presence and metamorphosis: **leaves present, not modified**

Leaf arrangement (phyllotaxis): **alternate, rosulate**

Leaf shape: **simple - pinnately divided**

Stipules: **absent**

Petiole: **both present and absent**

Leaf life span: **summer green**

Leaf anatomy: **scleromorphic, mesomorphic**



© Marcel Bartoš

## Flower

Flowering period [month]: **July-August**

Flower colour: **white, pink**

Flower symmetry: **actinomorphic, zygomorphic**

Perianth type: **calyx reduced, corolla present**

Perianth fusion: **fused**

Shape of the sympetalous corolla or syntepalous perianth: **funnel-shaped, tubular**

Calyx fusion: **pappus**

Inflorescence type: **corymbothyrus ex anthodiis compositus**

Dicliny: **synoecious**

Generative reproduction type: **facultative allogamy**

Pollination syndrome: **insect-pollination**

## **Fruit, seed and dispersal**

Fruit type: **dry fruit - achene/cypsela/samara**

Reproduction type: **only by seed/spores**

Dispersal unit (diaspore): **fruit, infrutescence or its part, tumbleweed**

Dispersal strategy: **Allium (mainly autochory)**

Myrmecochory: **myrmecochorous**

## **Belowground organs and clonality**

Shoot life span (cyclicity): **monocyclic shoots prevailing**

Primary root: **present**

Bud bank

Number of buds per shoot at the soil surface (root buds excluded):

Number of buds per shoot at a depth of 0–10 cm (root buds excluded): **3**

Number of buds per shoot at a depth greater than 10 cm (root buds excluded):

Size of the belowground bud bank (root buds excluded): **8**

Depth of the belowground bud bank (root buds excluded) [cm]: **2**

Number of buds per shoot at the soil surface (root buds included):

Number of buds per shoot at a depth of 0–10 cm (root buds included): **3**

Number of buds per shoot at a depth greater than 10 cm (root buds included):

Size of the belowground bud bank (root buds included): **8**

Depth of the belowground bud bank (root buds included) [cm]: **2**

## **Trophic mode**

Parasitism and mycoheterotrophy: **autotrophic**

Carnivory: **non-carnivorous**

Symbiotic nitrogen fixation: **no nitrogen-fixing symbionts**

## **Taxon origin**

Origin in the Czech Republic: **neophyte**

Invasion status: **naturalized**

Geographic origin: **Mediterranean**

Period of introduction: **Late Modern Period (1800-1950)**

Introduction pathway: **unintentional - traffic**

## Ecological indicator values

### Ellenberg-type indicator values

Light indicator value: **9 - full light plant, occurring only in fully irradiated places, not at less than 50% of diffuse radiation incident in an open area**

Temperature indicator value: **7 - heat indicator, occurring in relatively warm lowlands**

Moisture indicator value: **3 - missing on damp soil**

Reaction indicator value: **8 - transition between values 7 and 9, occurring mostly in calcium-rich conditions**

Nutrient indicator value: **3 - occurring at nutrient-poor sites more frequently than at average sites and exceptionally at rich sites**

Salinity indicator value: **0 - not salt tolerant, glycophyte**

## Habitat and sociology

### Occurrence in habitats

#### 8 Dry grasslands

8E Acidophilous dry grasslands: **1 - rare occurrence**

#### 13 Anthropogenic vegetation

13A Annual vegetation of ruderal habitats: **1 - rare occurrence**

13D Perennial thermophilous ruderal vegetation: **2 - optimum**

### Affinity to the forest environment

Affinity to the forest environment in Thermophyticum: **0 - taxon that does not spontaneously occur in Czech forests**

Affinity to the forest environment in Mesophyticum and Oreophyticum: **0 - taxon that does not spontaneously occur in Czech forests**

## Distribution and frequency

Floristic zone: **submeridional, meridional**

Floristic region: **Europe**

Continentality degree: **8**

Distribution range extension along the continentality gradient: **4**

Occurrence frequency in the basic grid mapping cells and quadrants of the basic grid mapping cells: **14**

taxon.data.freq\_in\_quad: **16**

Number of habitats with taxon occurrence in the Czech Republic

Number of narrow habitats in which the taxon occurs: **3**

Number of narrow habitats in which the taxon has its optimum: **1**

Number of broad habitats in which the taxon occurs: **2**

Number of broad habitats in which the taxon has its optimum: **1**

## Threats and protection

Red List 2017 (national categories): **taxon is not on the Red List**

Red List 2017 (IUCN categories): **LC(NA) - least concern (taxon is not on the Red List)**

Legal protection: **not protected by law**