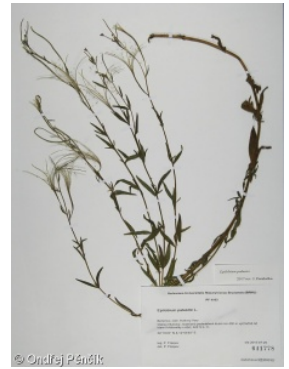
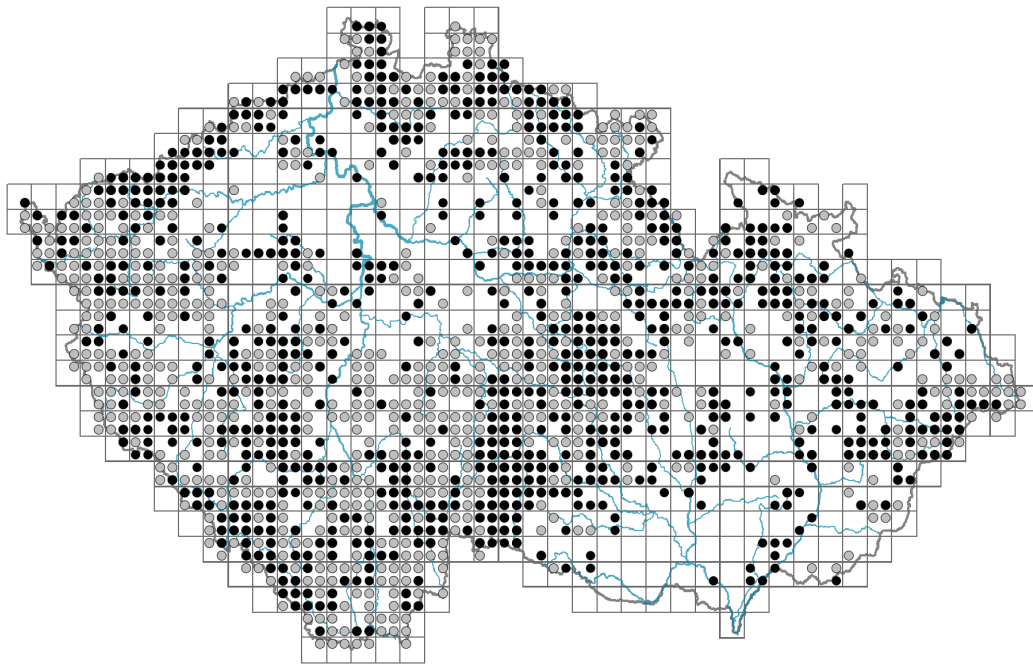


Epilobium palustre

Distribution



Map info

● revised records

○ unrevised records

On the map are not visualized records without the coordinates and records marked as incorrect or doubtful.



Habitus and growth type

Height [m]: **0.1-0.7**

Growth form: **clonal herb**

Life form: **hemicryptophyte**

Life strategy: **CS - competitor/stress-tolerator**

Life strategy (Pierce method based on leaf traits): **R/CR**

Life strategy (Pierce method, C-score): **24 %**

Life strategy (Pierce method, S-score): **0 %**

Life strategy (Pierce method, R-score): **76 %**

Leaf

Leaf presence and metamorphosis: **leaves present, not modified**

Leaf arrangement (phyllotaxis): **alternate, opposite**

Leaf shape: **simple - entire**

Stipules: **absent**

Petiole: **mainly absent**

Leaf life span: **evergreen**

Flower

Flowering period [month]: **July-September**

Flower colour: **white, pink, pink-violet**

Flower symmetry: **actinomorphic**
 Perianth type: **calyx and corolla**
 Perianth fusion: **free**
 Calyx fusion: **hypanthium**
 Inflorescence type: **racemus**
 Dicliny: **synoecious**
 Generative reproduction type: **facultative autogamy**
 Pollination syndrome: **selfing**



Fruit, seed and dispersal

Fruit type: **dry fruit - capsule**
 Reproduction type: **by seed/spores and vegetatively**
 Dispersal unit (diaspore): **seed**
 Dispersal strategy: **Phragmites (mainly anemochory and hydrochory)**
 Myrmecochory: **non-myrmecochorous (b)**



Belowground organs and clonality

Shoot metamorphosis: **stolon**
 Storage organ: **stolon**
 Type of clonal growth organ: **hypogeogenous rhizome**
 Freely dispersible organs of clonal growth: **absent**
 Shoot life span (cyclicity): **monocyclic shoots prevailing**
 Branching type of stem-derived organs of clonal growth: **sympodial**
 Primary root: **absent**
 Persistence of the clonal growth organ [year]: **1**
 Number of clonal offspring: **6**
 Lateral spreading distance by clonal growth [m]: **0.13**
 Clonal index: **5**



Bud bank

Number of buds per shoot at the soil surface (root buds excluded): **5**
 Number of buds per shoot at a depth of 0–10 cm (root buds excluded): **15**
 Number of buds per shoot at a depth greater than 10 cm (root buds excluded): **0**
 Size of the belowground bud bank (root buds excluded): **20**
 Depth of the belowground bud bank (root buds excluded) [cm]: **4**
 Number of buds per shoot at the soil surface (root buds included): **5**
 Number of buds per shoot at a depth of 0–10 cm (root buds included): **15**
 Number of buds per shoot at a depth greater than 10 cm (root buds included): **0**
 Size of the belowground bud bank (root buds included): **20**
 Depth of the belowground bud bank (root buds included) [cm]: **4**



Trophic mode

Parasitism and mycoheterotrophy: **autotrophic**
 Carnivory: **non-carnivorous**
 Symbiotic nitrogen fixation: **no nitrogen-fixing symbionts**

Karyology

Chromosome number (2n): **36**

Ploidy level (x): **4**

2C genome size [Mbp]: **618.86**

1Cx monoploid genome size [Mbp]: **154.72**

Genomic GC content: **41.9 %**

Taxon origin

Origin in the Czech Republic: **native**

Ecological indicator values

Ellenberg-type indicator values

Light indicator value: **7 - half-light plant, mostly occurring at full light, but also in the shade up to about 30% of diffuse radiation incident in an open area**

Temperature indicator value: **4 - transition between values 3 and 5**

Moisture indicator value: **9 - wetness indicator, focus on often soaked, poorly aerated soils**

Reaction indicator value: **3 - acidity indicator, occurring mainly in acidic conditions, exceptionally in neutral conditions**

Nutrient indicator value: **3 - occurring at nutrient-poor sites more frequently than at average sites and exceptionally at rich sites**

Salinity indicator value: **1 - salt tolerant, mostly on low-salt to salt-free soils, but occasionally on slightly salty soils**

Indicator values for disturbance

Whole-community disturbance frequency indicator value: **-0.77**

Herb layer disturbance frequency indicator value: **-0.58**

Whole-community disturbance severity indicator value: **0.21**

Herb layer disturbance severity indicator value: **0.24**

Whole-community structure based disturbance indicator value: **0.56**

Herb layer structure-based disturbance indicator value: **0.62**

Habitat and sociology

Occurrence in habitats

2 Alpine and subalpine grasslands

2B Subalpine tall-forb and tall-grass vegetation: **1 - rare occurrence**

3 Aquatic vegetation

3C Macrophytic vegetation of oligotrophic lakes and pools: **1 - rare occurrence**

4 Wetland and riverine herbaceous vegetation

4A Reed-beds of eutrophic still waters: **1 - rare occurrence**

4C Eutrophic vegetation of muddy substrata: **1 - rare occurrence**

4E Reed vegetation of brooks: **1 - rare occurrence**

4F Mesotrophic vegetation of muddy substrata: **1 - rare occurrence**

4G Tall-sedge beds: **2 - optimum**

4H Vegetation of low annual hygrophilous herbs: **1 - rare occurrence**



4I Vegetation of nitrophilous annual hygrophilous herbs: **1 - rare occurrence**

5 Vegetation of springs and mires

5B Lowland to montane soft-water springs: **1 - rare occurrence**

5C Alpine and subalpine soft-water springs: **1 - rare occurrence**

5D Calcareous fens: **1 - rare occurrence**

5E Acidic moss-rich fens and peatland meadows: **2 - optimum**

5F Transitional mires: **2 - optimum**

5G Raised bogs: **1 - rare occurrence**

5H Wet peat soils and bog hollows: **1 - rare occurrence**

6 Meadows and mesic pastures

6D Alluvial meadows of lowland rivers: **1 - rare occurrence**

6E Wet Cirsium meadows: **2 - optimum**

6F Intermittently wet Molinia meadows: **1 - rare occurrence**

6G Vegetation of wet disturbed soils: **1 - rare occurrence**

7 Acidophilous grasslands

7A Subalpine and montane acidophilous grasslands: **1 - rare occurrence**

7B Submontane Nardus grasslands: **1 - rare occurrence**

10 Saline vegetation

10I Inland saline meadows: **1 - rare occurrence**

10J Saline steppes: **1 - rare occurrence**

11 Heathlands and scrub

11H Subalpine deciduous scrub: **1 - rare occurrence**

11I Willow carrs: **1 - rare occurrence**

12 Forests

12A Alder carrs: **1 - rare occurrence**

12P Peatland pine forests: **1 - rare occurrence**

12Q Peatland birch forests: **1 - rare occurrence**

12R Acidophilous spruce forests: **1 - rare occurrence**

Affinity to the forest environment

Affinity to the forest environment in Thermophyticum: **2.2 - taxon occurring partly in the forest, but mainly in open vegetation**

Affinity to the forest environment in Mesophyticum and Oreophyticum: **2.2 - taxon occurring partly in the forest, but mainly in open vegetation**

Diagnostic taxon

Diagnostic taxon of alliances: [**RAC Epilobio nutantis-Montion fontanae**](#)

Diagnostic taxon of associations: [**MCG04 Comaro palustris-Caricetum cespitosae**](#), [**RAC01 Philonotido fontanae-Montietum rivularis**](#)

Constant taxon

Constant taxon of alliances: [**RAC Epilobio nutantis-Montion fontanae**](#)

Constant taxon of associations: [**LAB01 Salicetum auritae**](#), [**MCG04 Comaro palustris-Caricetum cespitosae**](#), [**RAC01 Philonotido fontanae-Montietum rivularis**](#)

Ecological specialization indices

Ecological specialization index for all vegetation types: **5.3**

Ecological specialization index for non-forest vegetation: **5.3**

Ecological specialization index for forest vegetation: **4.9**

Colonization ability

Index of colonization success (ICS): **5**
Index of colonization potential (ICP): **3**
Optimum successional age [years]: **15**

Distribution and frequency

Floristic zone: **northern temperate, southern temperate, submeridional, meridional**

Floristic region: **Europe**

Distribution range extension along the continentality gradient: **7**

Elevational belt in the Czech Republic: **lowlands, colline belt, submontane belt, montane belt, subalpine belt**

Occurrence frequency in the basic grid mapping cells and quadrants of the basic grid mapping cells: **562**

taxon.data.freq_in_quad: **1497**

Commonness in vegetation plots from the Czech Republic

Occurrence frequency in vegetation plots: **2.4 %**

Occurrence frequency in vegetation plots with a cover above 5%: **3.7 %**

Occurrence frequency in vegetation plots with a cover above 25%: **0.1 %**

Occurrence frequency in vegetation plots with a cover above 50%: **0 %**

Mean percentage cover in vegetation plots: **2.4 %**

Maximum percentage cover in vegetation plots: **38 %**

Number of habitats with taxon occurrence in the Czech Republic

Number of narrow habitats in which the taxon occurs: **30**

Number of narrow habitats in which the taxon has its optimum: **4**

Number of broad habitats in which the taxon occurs: **9**

Number of broad habitats in which the taxon has its optimum: **3**

Threats and protection

Red List 2017 (national categories): **C4a - near threatened taxon**

Red List 2017 (IUCN categories): **NT - near threatened**

Legal protection: **not protected by law**