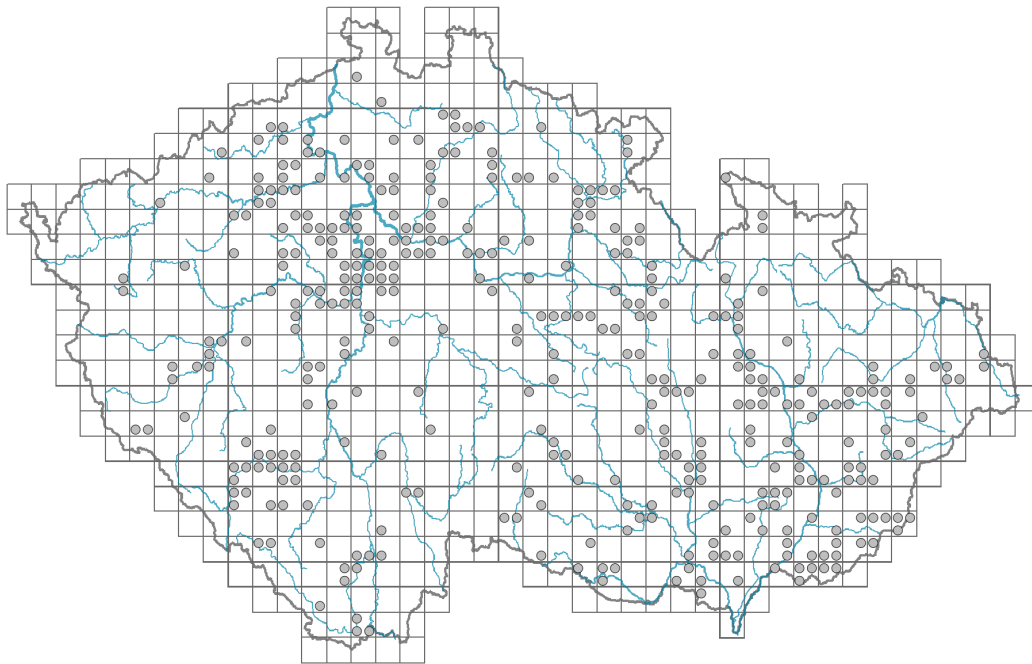


Erigeron muralis

Distribution



© Alena Lepší

Map info

● revised records

○ unrevised records

On the map are not visualized records without the coordinates and records marked as incorrect or doubtful.

Habitus and growth type

Height [m]: **0.1-0.6**

Growth form: **monocarpic perennial non-clonal herb**

Life form: **hemicryptophyte**

Leaf

Leaf presence and metamorphosis: **leaves present, not modified**

Leaf arrangement (phyllotaxis): **alternate, rosulate**

Leaf shape: **simple - entire**

Stipules: **absent**

Petiole: **both present and absent**

Flower

Flowering period [month]: **July-October**

Flower colour: **yellow, pink-violet**

Flower symmetry: **actinomorphic, zygomorphic**

Perianth type: **calyx reduced, corolla present**

Perianth fusion: **fused**

Shape of the sympetalous corolla or syntepalous perianth: **ligulate, tubular**

Calyx fusion: **pappus**

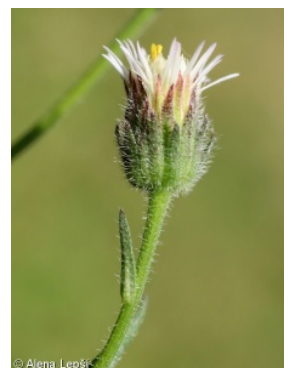
Inflorescence type: **racemus ex anthodiis compositus**



© Ondřej Pěničík



© Ondřej Pěničík



© Alena Lepší

Fruit, seed and dispersal

Fruit type: **dry fruit - achene/cypsela/samara**

Dispersal unit (diaspore): **fruit, infrutescence or its part**

Dispersal strategy: **Epilobium (mainly anemochory and autochory)**

Myrmecochory: **probably myrmecochorous nv**

Trophic mode

Parasitism and mycoheterotrophy: **autotrophic**

Carnivory: **non-carnivorous**

Symbiotic nitrogen fixation: **no nitrogen-fixing symbionts**

Karyology

Chromosome number (2n): **18**

Ploidy level (x): **2**

2C genome size [Mbp]: **2606.54**

1Cx monoploid genome size [Mbp]: **1303.27**

Genomic GC content: **40.2 %**

Taxon origin

Origin in the Czech Republic: **native**

Ecological indicator values

Ellenberg-type indicator values

Light indicator value: **8 - light plant, only exceptionally occurring at less than 40% of diffuse radiation incident in an open area**

Temperature indicator value: **6 - transition between values 5 and 7**

Moisture indicator value: **4 - transition between values 3 and 5**

Reaction indicator value: **7 - indicator of slightly acidic to slightly basic conditions, never occurring in very acidic conditions**

Nutrient indicator value: **3 - occurring at nutrient-poor sites more frequently than at average sites and exceptionally at rich sites**

Salinity indicator value: **0 - not salt tolerant, glycophyte**

Habitat and sociology

Occurrence in habitats

1 Vegetation of cliffs, screes and walls

1A Calcareous cliffs: **1 - rare occurrence**

1B Siliceous cliffs and block fields: **1 - rare occurrence**

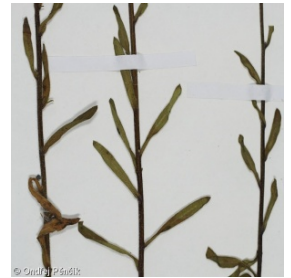
1D Mobile calcareous screes: **1 - rare occurrence**

8 Dry grasslands

8A Hercynian dry grasslands on rock outcrops: **1 - rare occurrence**

8C Narrow-leaved sub-continental steppes: **2 - optimum**

8D Broad-leaved dry grasslands: **2 - optimum**



8E Acidophilous dry grasslands: **1 - rare occurrence**

8F Thermophilous forest fringe vegetation: **1 - rare occurrence**

13 Anthropogenic vegetation

13D Perennial thermophilous ruderal vegetation: **1 - rare occurrence**

Affinity to the forest environment

Affinity to the forest environment in Thermophyticum: **0 - taxon that does not spontaneously occur in Czech forests**

Affinity to the forest environment in Mesophyticum and Oreophyticum: **0 - taxon that does not spontaneously occur in Czech forests**

Colonization ability

Index of colonization success (ICS): **1**

Distribution and frequency

Elevational belt in the Czech Republic: **lowlands, colline belt**

Occurrence frequency in the basic grid mapping cells and quadrants of the basic grid mapping cells: 235

taxon.data.freq_in_quad: 378

Number of habitats with taxon occurrence in the Czech Republic

Number of narrow habitats in which the taxon occurs: **9**

Number of narrow habitats in which the taxon has its optimum: **2**

Number of broad habitats in which the taxon occurs: **3**

Number of broad habitats in which the taxon has its optimum: **1**

Threats and protection

Red List 2017 (national categories): **taxon is not on the Red List**

Red List 2017 (IUCN categories): **LC(NA) - least concern (taxon is not on the Red List)**

Legal protection: **not protected by law**