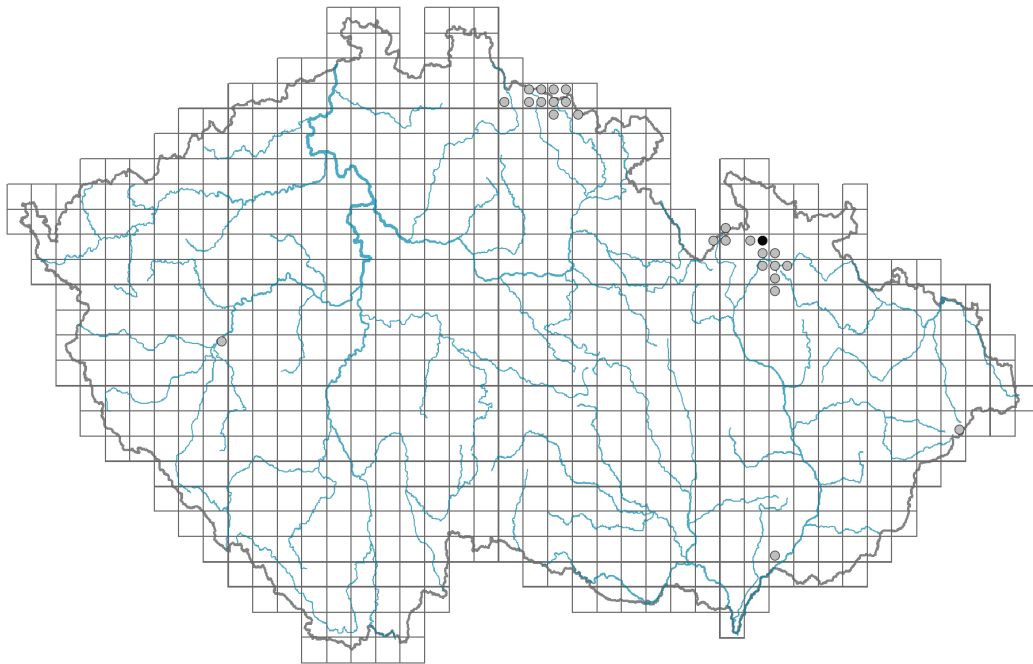


# *Festuca supina*

## Distribution



### Map info

● revised records

○ unrevised records

On the map are not visualized records without the coordinates and records marked as incorrect or doubtful.

## Habitus and growth type

Height [m]: **0.2-0.4**

Growth form: **clonal herb**

Life form: **hemicryptophyte**

Life strategy: **CS - competitor/stress-tolerator**



## Leaf

Leaf presence and metamorphosis: **leaves present, not modified**

Leaf arrangement (phyllotaxis): **alternate**

Leaf shape: **simple - entire**

Stipules: **absent**

Petiole: **absent**

## Flower

Flowering period [month]: **July-August**

Flower colour: **green**

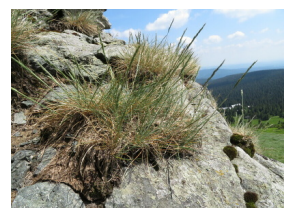
Perianth type: **reduced**

Perianth fusion: **reduced**

Inflorescence type: **panicula e spiculis composita**

Dicliny: **synoecious**

Generative reproduction type: **allogamy**



Pollination syndrome: **wind-pollination**

## Fruit, seed and dispersal

Fruit type: **dry fruit - caryopsis**

Fruit colour: **brown**

Reproduction type: **mostly by seed/spores, rarely vegetatively**

Dispersal unit (diaspore): **fruit, infrutescence or its part**

Dispersal strategy: **Allium (mainly autochory)**

Myrmecochory: **non-myrmecochorous (b)**

## Belowground organs and clonality

Shoot metamorphosis: **brood shoot**

Storage organ: **tuft**

## Trophic mode

Parasitism and mycoheterotrophy: **autotrophic**

Carnivory: **non-carnivorous**

Symbiotic nitrogen fixation: **no nitrogen-fixing symbionts**

## Karyology

Chromosome number (2n): **28 (35)**

Ploidy level (x): **4 (5)**

2C genome size [Mbp]: **8554.73**

1Cx monoploid genome size [Mbp]: **2138.68**

Genomic GC content: **47.9 %**

## Taxon origin

Origin in the Czech Republic: **native**

## Ecological indicator values

Ellenberg-type indicator values

Light indicator value: **9 - full light plant, occurring only in fully irradiated places, not at less than 50% of diffuse radiation incident in an open area**

Temperature indicator value: **2 - transition between values 1 and 3**

Moisture indicator value: **5 - indicator of fresh soils, focus on soils of average moisture, missing on wet and on soils that frequently dry out**

Reaction indicator value: **2 - transition between values 1 and 3**

Nutrient indicator value: **2 - transition between values 1 and 3**

Salinity indicator value: **0 - not salt tolerant, glycophyte**

Indicator values for disturbance

Whole-community disturbance frequency indicator value: **-0.76**

Herb layer disturbance frequency indicator value: **-0.76**

Whole-community disturbance severity indicator value: **0.24**

Herb layer disturbance severity indicator value: **0.28**



Whole-community structure based disturbance indicator value: **0.52**

Herb layer structure-based disturbance indicator value: **0.6**

## Habitat and sociology

### Occurrence in habitats

1 Vegetation of cliffs, screes and walls

1B Siliceous cliffs and block fields: **2 - optimum**

2 Alpine and subalpine grasslands

2A Alpine grasslands on siliceous bedrock: **3 - dominant**

2B Subalpine tall-forb and tall-grass vegetation: **2 - optimum**

6 Meadows and mesic pastures

6B Montane mesic meadows: **1 - rare occurrence**

7 Acidophilous grasslands

7A Subalpine and montane acidophilous grasslands: **2 - optimum**

7B Submontane *Nardus* grasslands: **1 - rare occurrence**

11 Heathlands and scrub

11A Dry lowland to subalpine heathlands: **2 - optimum**

11D Subalpine acidophilous *Pinus mugo* scrub: **1 - rare occurrence**

11H Subalpine deciduous scrub: **1 - rare occurrence**

12 Forests

12R Acidophilous spruce forests: **1 - rare occurrence**

### Affinity to the forest environment

Affinity to the forest environment in Thermophyticum: **0 - taxon that does not spontaneously occur in Czech forests**

Affinity to the forest environment in Mesophyticum and Oreophyticum: **0 - taxon that does not spontaneously occur in Czech forests**

### Diagnostic taxon

Diagnostic taxon of classes: [AA \*Loiseleurio-Vaccinietea\*](#), [AB \*Juncetea trifidi\*](#), [AC \*Elyno-Seslerietea\*](#)

Diagnostic taxon of alliances: [AAA \*Loiseleurio procumbentis-Vaccinion\*](#), [ABA \*Juncion trifidi\*](#), [ABB \*Nardo strictae-Caricion bigelowii\*](#), [ACA \*Agrostion alpinae\*](#), [ADB \*Calamagrostion arundinaceae\*](#), [TEA \*Nardion strictae\*](#)

Diagnostic taxon of associations: [AAA01 \*Avenello flexuosae-Callunetum vulgaris\*](#), [AAA02 \*Junco trifidi-Empetretum hermaphroditi\*](#), [ABA01 \*Cetrario-Festucetum supinae\*](#), [ABB01 \*Carici bigelowii-Nardetum strictae\*](#), [ACA01 \*Saxifrago oppositifoliae-Festucetum versicoloris\*](#), [ADA03 \*Violo sudeticae-Deschampsietum cespitosae\*](#), [ADB01 \*Bupleuro longifoliae-Calamagrostietum arundinaceae\*](#), [TEA02 \*Thesio alpini-Nardetum strictae\*](#)

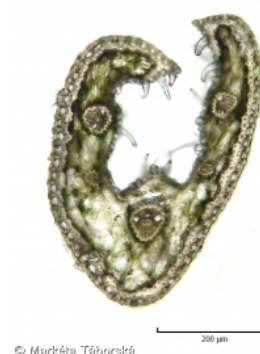
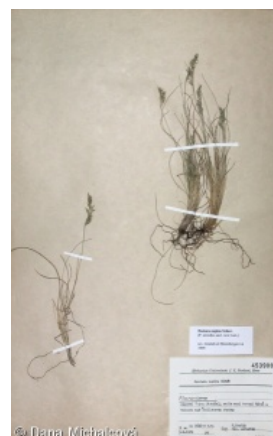
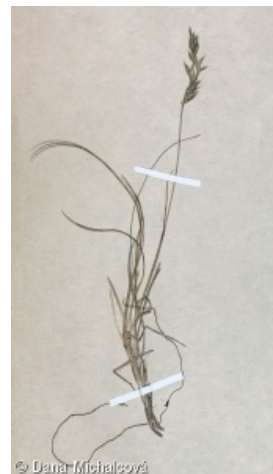
### Constant taxon

Constant taxon of classes: [AA \*Loiseleurio-Vaccinietea\*](#), [AB \*Juncetea trifidi\*](#), [AC \*Elyno-Seslerietea\*](#)

Constant taxon of alliances: [AAA \*Loiseleurio procumbentis-Vaccinion\*](#), [ABA \*Juncion trifidi\*](#), [ABB \*Nardo strictae-Caricion bigelowii\*](#), [ACA \*Agrostion alpinae\*](#)

Constant taxon of associations: [AAA01 \*Avenello flexuosae-Callunetum vulgaris\*](#), [ABA01 \*Cetrario-Festucetum supinae\*](#), [ABB01 \*Carici bigelowii-Nardetum strictae\*](#), [ACA01 \*Saxifrago oppositifoliae-Festucetum versicoloris\*](#)

### Dominant taxon



© Markéta Táborská

Dominant taxon of associations: [ABA01 Cetrario-Festucetum supinae](#)

## Ecological specialization indices

Ecological specialization index for all vegetation types: **5.5**

Ecological specialization index for non-forest vegetation: **5.5**

## Distribution and frequency

Floristic zone: **southern temperate, submeridional**

Floristic region: **Europe**

Continentality degree: **5**

Distribution range extension along the continentality gradient: **3**

Elevational belt in the Czech Republic: **subalpine belt**

Occurrence frequency in the basic grid mapping cells and quadrants of the basic grid mapping cells: **16**

taxon.data.freq\_in\_quad: **26**

Commonness in vegetation plots from the Czech Republic

Occurrence frequency in vegetation plots: **0.3 %**

Occurrence frequency in vegetation plots with a cover above 5%: **26.9 %**

Occurrence frequency in vegetation plots with a cover above 25%: **5.1 %**

Occurrence frequency in vegetation plots with a cover above 50%: **1.3 %**

Mean percentage cover in vegetation plots: **7.1 %**

Maximum percentage cover in vegetation plots: **63 %**

Number of habitats with taxon occurrence in the Czech Republic

Number of narrow habitats in which the taxon occurs: **10**

Number of narrow habitats in which the taxon has its optimum: **5**

Number of broad habitats in which the taxon occurs: **6**

Number of broad habitats in which the taxon has its optimum: **4**

## Threats and protection

Red List 2017 (national categories): **C3 - vulnerable taxon**

Red List 2017 (IUCN categories): **VU - vulnerable**

Legal protection: **not protected by law**