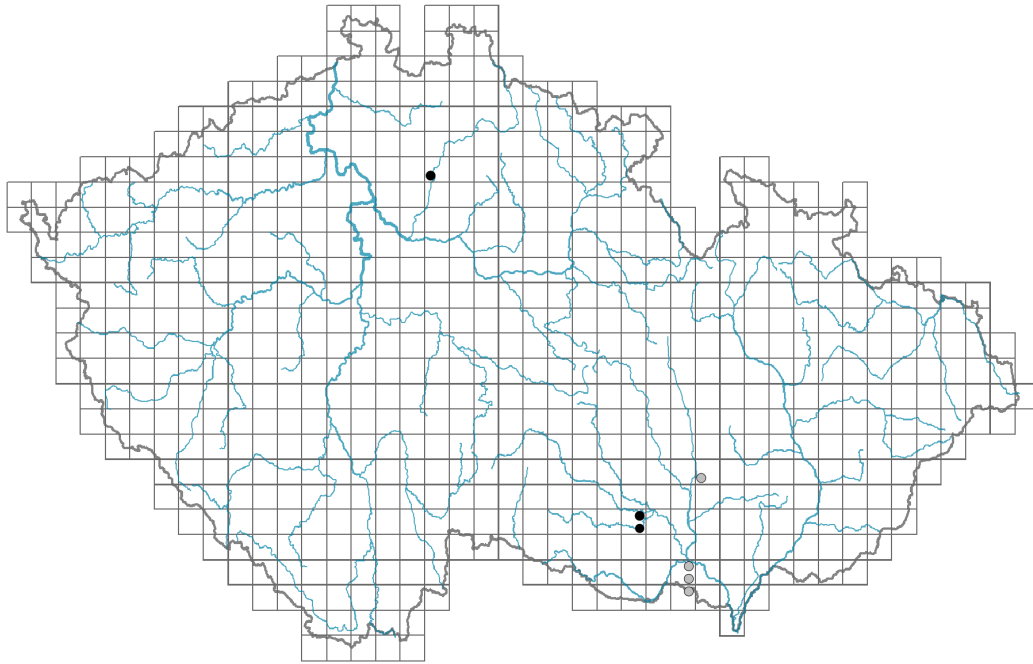


Fumana procumbens

Distribution



Map info

● revised records

○ unrevised records

On the map are not visualized records without the coordinates and records marked as incorrect or doubtful.



Habitus and growth type

Height [m]: **0.1-0.3**

Growth form: **dwarf shrub**

Life form: **chamaephyte**

Life strategy: **CSR - competitor/stress-tolerator/ruderal**

Life strategy (Pierce method based on leaf traits): **S**

Life strategy (Pierce method, C-score): **0 %**

Life strategy (Pierce method, S-score): **100 %**

Life strategy (Pierce method, R-score): **0 %**



Leaf

Leaf presence and metamorphosis: **leaves present, not modified**

Leaf arrangement (phyllotaxis): **alternate**

Leaf shape: **simple - entire**

Stipules: **absent**

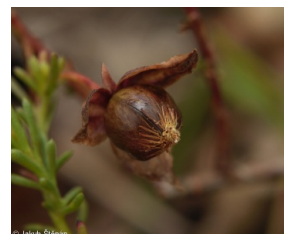
Petiole: **absent**

Leaf life span: **evergreen**

Leaf deciduousness in woody plants: **evergreen**

Leaf anatomy: **scleromorphic**

Functional leaf type in woody plants: **needle-like**



Flower

Flowering period [month]: **June-August**

Flowering phase: **7 Ligustrum vulgare-Stachys sylvatica (end of early summer)**

Flower colour: **yellow**

Flower symmetry: **actinomorphic**

Perianth type: **calyx and corolla**

Perianth fusion: **free**

Calyx fusion: **aposepalous**

Inflorescence type: **flores solitarii**

Dicliny: **synoecious**

Generative reproduction type: **mixed mating**

Pollination syndrome: **insect-pollination, selfing**



Fruit, seed and dispersal

Fruit type: **dry fruit - capsule**

Fruit colour: **brown**

Reproduction type: **only by seed/spores**

Dispersal unit (diaspore): **seed**

Dispersal strategy: **Allium (mainly autochory)**

Myrmecochory: **non-myrmecochorous (b)**

Belowground organs and clonality

Shoot life span (cyclicity): **dicyclic or polycyclic shoots prevailing**

Primary root: **present**

Bud bank

Number of buds per shoot at the soil surface (root buds excluded): **15**

Number of buds per shoot at a depth of 0–10 cm (root buds excluded): **8**

Number of buds per shoot at a depth greater than 10 cm (root buds excluded): **0**

Size of the belowground bud bank (root buds excluded): **23**

Depth of the belowground bud bank (root buds excluded) [cm]: **2**

Number of buds per shoot at the soil surface (root buds included): **15**

Number of buds per shoot at a depth of 0–10 cm (root buds included): **8**

Number of buds per shoot at a depth greater than 10 cm (root buds included): **0**

Size of the belowground bud bank (root buds included): **23**

Depth of the belowground bud bank (root buds included) [cm]: **2**

Trophic mode

Parasitism and mycoheterotrophy: **autotrophic**

Carnivory: **non-carnivorous**

Symbiotic nitrogen fixation: **no nitrogen-fixing symbionts**

Karyology

Chromosome number (2n): **36**

Ploidy level (x): **2**

2C genome size [Mbp]: **2370.68**

1Cx monoploid genome size [Mbp]: **1185.34**

Genomic GC content: **39 %**

Taxon origin

Origin in the Czech Republic: **native**

Ecological indicator values

Ellenberg-type indicator values

Light indicator value: **9 - full light plant, occurring only in fully irradiated places, not at less than 50% of diffuse radiation incident in an open area**

Temperature indicator value: **8 - transition between values 7 and 9**

Moisture indicator value: **1 - strong drought indicator, viable at sites that frequently dry out and confined to dry soils**

Reaction indicator value: **9 - base and lime indicator, always occurring in calcium-rich conditions**

Nutrient indicator value: **2 - transition between values 1 and 3**

Salinity indicator value: **0 - not salt tolerant, glycophyte**

Habitat and sociology

Occurrence in habitats

8 Dry grasslands

8B Submediterranean dry grasslands on rock outcrops: **2 - optimum**

8D Broad-leaved dry grasslands: **1 - rare occurrence**

Affinity to the forest environment

Affinity to the forest environment in Thermophyticum: **0 - taxon that does not spontaneously occur in Czech forests**

Affinity to the forest environment in Mesophyticum and Oreophyticum: **0 - taxon that does not spontaneously occur in Czech forests**

Diagnostic taxon

Diagnostic taxon of alliances: [**THB Bromo pannonici-Festucion pallentis**](#)

Diagnostic taxon of associations: [**THB01 Poo badensis-Festucetum pallentis**](#)

Ecological specialization indices

Ecological specialization index for all vegetation types: **6.6**

Colonization ability

Index of colonization success (ICS): **1**

Distribution and frequency

Floristic zone: **southern temperate, submeridional, meridional**

Floristic region: **Europe**

Continentality degree: **5**

Distribution range extension along the continentality gradient: **4**

Elevational belt in the Czech Republic: **colline belt**

Occurrence frequency in the basic grid mapping cells and quadrants of the basic grid

mapping cells: 7

taxon.data.freq_in_quad: 9

Commonness in vegetation plots from the Czech Republic

Occurrence frequency in vegetation plots: **0 %**

Occurrence frequency in vegetation plots with a cover above 5%: **57.1 %**

Occurrence frequency in vegetation plots with a cover above 25%: **14.3 %**

Occurrence frequency in vegetation plots with a cover above 50%: **0 %**

Mean percentage cover in vegetation plots: **12 %**

Maximum percentage cover in vegetation plots: **38 %**

Number of habitats with taxon occurrence in the Czech Republic

Number of narrow habitats in which the taxon occurs: **2**

Number of narrow habitats in which the taxon has its optimum: **1**

Number of broad habitats in which the taxon occurs: **1**

Number of broad habitats in which the taxon has its optimum: **1**

Threats and protection

Red List 2017 (national categories): **C2r - endangered taxon, rare**

Red List 2017 (IUCN categories): **EN - endangered**

Legal protection: **endangered taxon**