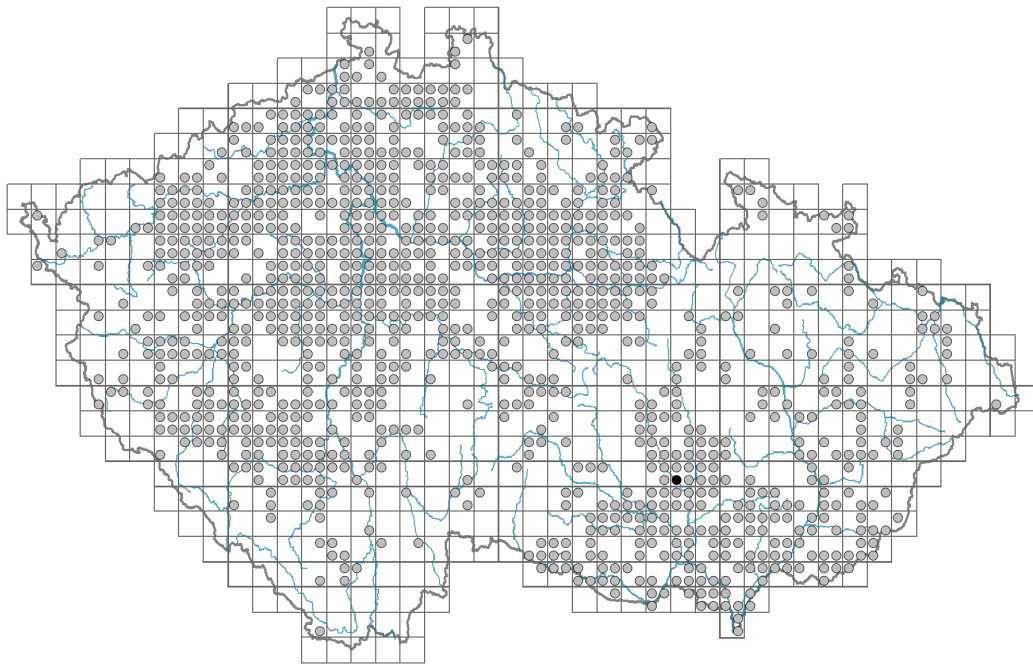


Chaerophyllum temulum

Distribution

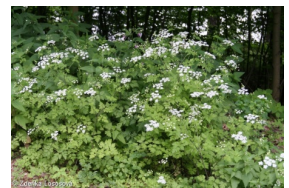


Map info

● revised records

○ unrevised records

On the map are not visualized records without the coordinates and records marked as incorrect or doubtful.



Habitus and growth type

Height [m]: **0.2**

Growth form: **annual herb**

Life form: **hemicryptophyte (therophyte)**

Life strategy: **CR - competitor/ruderal**

Life strategy (Pierce method based on leaf traits): **C/CSR**

Life strategy (Pierce method, C-score): **62.2 %**

Life strategy (Pierce method, S-score): **17.1 %**

Life strategy (Pierce method, R-score): **20.7 %**

Leaf

Leaf presence and metamorphosis: **leaves present, not modified**

Leaf arrangement (phyllotaxis): **alternate**

Leaf shape: **compound - bipinnate, compound - tripinnate**

Stipules: **absent**

Petiole: **both present and absent**

Leaf life span: **evergreen**

Leaf anatomy: **hygromorphic**

Flower

Flowering period [month]: **May-July**

Flowering phase: **6 Cornus sanguinea-Melica uniflora (start of early summer)**

Flower colour: **white**

Flower symmetry: **actinomorphic, zygomorphic**

Perianth type: **calyx absent, corolla present**

Perianth fusion: **free**

Inflorescence type: **umbrella composita**

Dicliny: **andromonoecious**

Generative reproduction type: **facultative allogamy**

Pollination syndrome: **insect-pollination**

Pollinator spectrum: **other Diptera, beetles, nitidulids (other Hymenoptera, hoverflies, flies s. l., butterflies)**



Fruit, seed and dispersal

Fruit type: **dry fruit - cremocarp**

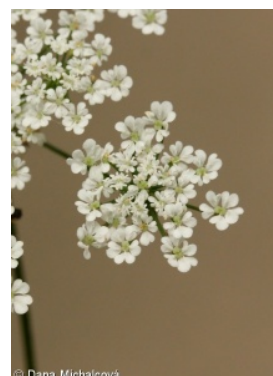
Fruit colour: **green, brown**

Reproduction type: **only by seed/spores**

Dispersal unit (diaspore): **fruit, infrutescence or its part**

Dispersal strategy: **Allium (mainly autochory)**

Myrmecochory: **non-myrmecochorous (b)**



Belowground organs and clonality

Root metamorphosis: **primary storage root**

Storage organ: **primary storage root**

Shoot life span (cyclicity): **monocyclic shoots prevailing**

Primary root: **present**

Bud bank

Number of buds per shoot at the soil surface (root buds excluded):

Number of buds per shoot at a depth of 0–10 cm (root buds excluded):

Number of buds per shoot at a depth greater than 10 cm (root buds excluded):

Size of the belowground bud bank (root buds excluded):

Depth of the belowground bud bank (root buds excluded) [cm]:

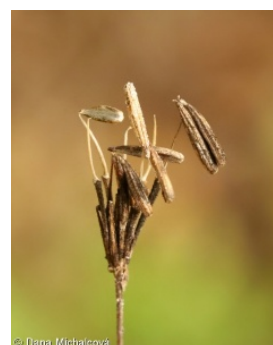
Number of buds per shoot at the soil surface (root buds included):

Number of buds per shoot at a depth of 0–10 cm (root buds included):

Number of buds per shoot at a depth greater than 10 cm (root buds included):

Size of the belowground bud bank (root buds included):

Depth of the belowground bud bank (root buds included) [cm]:



Trophic mode

Parasitism and mycoheterotrophy: **autotrophic**

Carnivory: **non-carnivorous**

Symbiotic nitrogen fixation: **no nitrogen-fixing symbionts**

Karyology

Chromosome number (2n): **14 (22)**

Ploidy level (x): **2**



2C genome size [Mbp]: **4092.09**

1Cx monoploid genome size [Mbp]: **2046.05**

Genomic GC content: **37.9 %**

Taxon origin

Origin in the Czech Republic: **native**

Ecological indicator values

Ellenberg-type indicator values

Light indicator value: **5 - semi-shade plant, only exceptionally occurring in full light, but usually at more than 10% of the diffuse radiation incident in an open area**

Temperature indicator value: **6 - transition between values 5 and 7**

Moisture indicator value: **5 - indicator of fresh soils, focus on soils of average moisture, missing on wet and on soils that frequently dry out**

Reaction indicator value: **7x - indicator of slightly acidic to slightly basic conditions, never occurring in very acidic conditions (generalist)**

Nutrient indicator value: **8 - pronounced nutrient indicator**

Salinity indicator value: **0 - not salt tolerant, glycophyte**

Indicator values for disturbance

Whole-community disturbance frequency indicator value: **-1.67**

Herb layer disturbance frequency indicator value: **-0.94**

Whole-community disturbance severity indicator value: **0.34**

Herb layer disturbance severity indicator value: **0.24**

Whole-community structure based disturbance indicator value: **0.12**

Herb layer structure-based disturbance indicator value: **0.15**

Habitat and sociology

Occurrence in habitats

1 Vegetation of cliffs, screes and walls

1A Calcareous cliffs: **1 - rare occurrence**

1C Walls: **1 - rare occurrence**

1D Mobile calcareous screes: **1 - rare occurrence**

4 Wetland and riverine herbaceous vegetation

4L Nitrophilous herbaceous fringes of lowland rivers: **1 - rare occurrence**

5 Vegetation of springs and mires

5A Hard-water springs with tufa formation: **1 - rare occurrence**

5B Lowland to montane soft-water springs: **1 - rare occurrence**

8 Dry grasslands

8F Thermophilous forest fringe vegetation: **1 - rare occurrence**

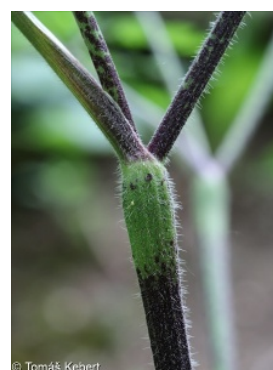
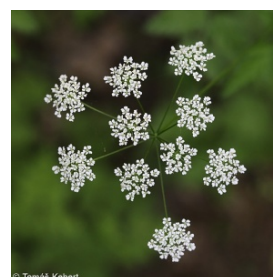
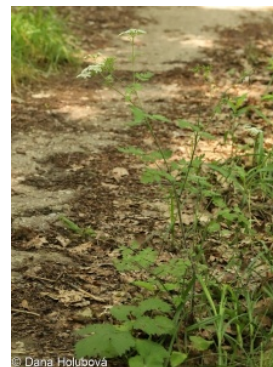
11 Heathlands and scrub

11J Willow galleries of loamy and sandy river banks: **1 - rare occurrence**

11L Tall mesic and xeric shrub: **1 - rare occurrence**

11N Low xeric scrub: **1 - rare occurrence**

11R Scrub and pioneer woodland of forests clearings: **2 - optimum**



12 Forests

12B Alluvial forests: **2 - optimum**

12C Oak-hornbeam forests: **2 - optimum**

12D Ravine forests: **2 - optimum**

12E Herb-rich beech forests: **1 - rare occurrence**

12F Limestone beech forests: **1 - rare occurrence**

12H Peri-Alpidic basiphilous thermophilous oak forests: **2 - optimum**

12I Sub-continental thermophilous oak forests: **1 - rare occurrence**

12J Acidophilous thermophilous oak forests: **1 - rare occurrence**

12T Robinia pseudacacia plantations: **2 - optimum**

12U Plantations of broad-leaved non-native trees: **2 - optimum**

12V Spruce plantations: **1 - rare occurrence**

12W Pine and larch plantations: **1 - rare occurrence**

13 Anthropogenic vegetation

13A Annual vegetation of ruderal habitats: **1 - rare occurrence**

13D Perennial thermophilous ruderal vegetation: **1 - rare occurrence**

13E Perennial nitrophilous herbaceous vegetation of mesic sites: **3 - dominant**

13F Herbaceous vegetation of forests clearings and Rubus scrub: **1 - rare occurrence**

Affinity to the forest environment

Affinity to the forest environment in Thermophyticum: **1.2 - taxon occurring mainly along forest edges and in forest openings, including forest roads and paths, windthrow sites, burnt sites and forest clearings**

Affinity to the forest environment in Mesophyticum and Oreophyticum: **1.2 - taxon occurring mainly along forest edges and in forest openings, including forest roads and paths, windthrow sites, burnt sites and forest clearings**

Diagnostic taxon

Diagnostic taxon of alliances: [KBE *Chelidonio majoris-Robinion pseudoacaciae*](#), [XDD *Geo urbani-Alliarion petiolatae*](#)

Diagnostic taxon of associations: [KBB05 *Rhamno catharticae-Cornetum sanguineae*](#), [KBE01 *Chelidonio majoris-Robinieta pseudoacaciae*](#), [XDC05 *Urtico dioicae-Parietaria officinalis*](#), [XDD01 *Alliario petiolatae-Chaerophylletum temuli*](#)

Constant taxon

Constant taxon of alliances: [XDD *Geo urbani-Alliarion petiolatae*](#)

Constant taxon of associations: [KBB05 *Rhamno catharticae-Cornetum sanguineae*](#), [XDC05 *Urtico dioicae-Parietaria officinalis*](#), [XDD01 *Alliario petiolatae-Chaerophylletum temuli*](#)

Dominant taxon

Dominant taxon of associations: [XDD01 *Alliario petiolatae-Chaerophylletum temuli*](#)

Ecological specialization indices

Ecological specialization index for all vegetation types: **4.5**

Ecological specialization index for non-forest vegetation: **4.2**

Ecological specialization index for forest vegetation: **4.9**

Colonization ability

Index of colonization success (ICS): **5**

Index of colonization potential (ICP): **7**

Optimum successional age [years]: **75**



Distribution and frequency

Floristic zone: **northern temperate, southern temperate, submeridional, meridional**

Floristic region: **Europe**

Distribution range extension along the continentality gradient: **5**

Elevational belt in the Czech Republic: **lowlands, colline belt**

Occurrence frequency in the basic grid mapping cells and quadrants of the basic grid mapping cells: **442**

taxon.data.freq_in_quad: 1047

Commonness in vegetation plots from the Czech Republic

Occurrence frequency in vegetation plots: **1.2 %**

Occurrence frequency in vegetation plots with a cover above 5%: **20.2 %**

Occurrence frequency in vegetation plots with a cover above 25%: **8 %**

Occurrence frequency in vegetation plots with a cover above 50%: **4 %**

Mean percentage cover in vegetation plots: **7.6 %**

Maximum percentage cover in vegetation plots: **88 %**

Number of habitats with taxon occurrence in the Czech Republic

Number of narrow habitats in which the taxon occurs: **27**

Number of narrow habitats in which the taxon has its optimum: **8**

Number of broad habitats in which the taxon occurs: **7**

Number of broad habitats in which the taxon has its optimum: **3**

Threats and protection

Red List 2017 (national categories): **taxon is not on the Red List**

Red List 2017 (IUCN categories): **LC(NA) - least concern (taxon is not on the Red List)**

Legal protection: **not protected by law**