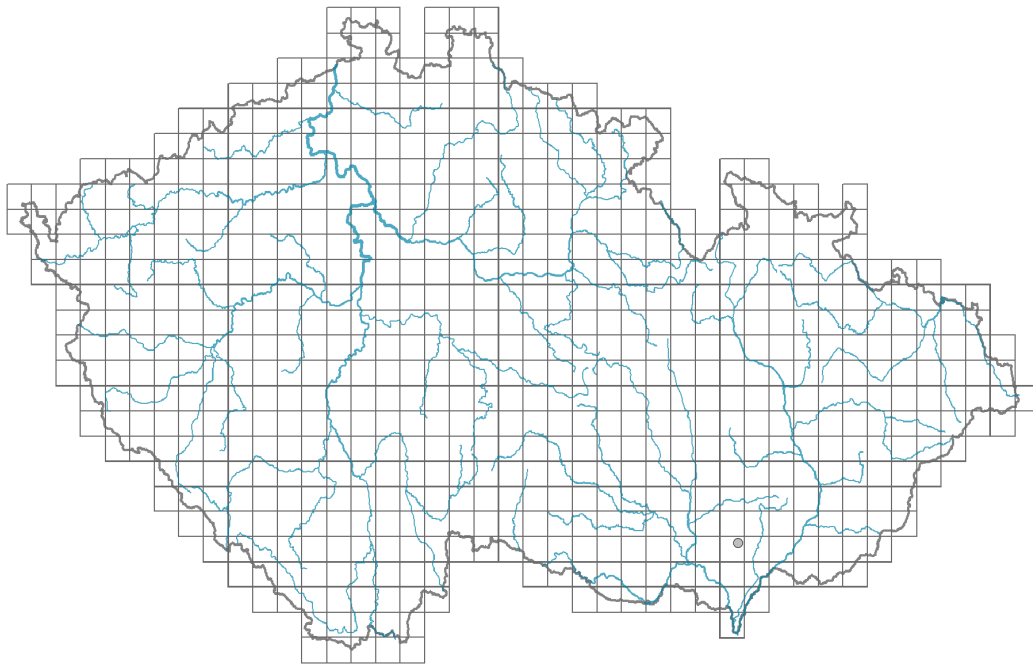


Iris spuria

Distribution

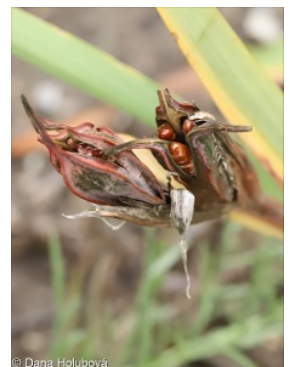


Map info

● revised records

○ unrevised records

On the map are not visualized records without the coordinates and records marked as incorrect or doubtful.



Habitus and growth type

Height [m]: **0.3-0.9**

Growth form: **clonal herb**

Life form: **hemicryptophyte (geophyte)**

Life strategy: **CS - competitor/stress-tolerator**

Leaf

Leaf presence and metamorphosis: **leaves present, not modified**

Leaf arrangement (phyllotaxis): **alternate**

Leaf shape: **simple - entire**

Stipules: **absent**

Petiole: **absent**

Leaf life span: **summer green**

Flower

Flowering period [month]: **May-June**

Flower colour: **blue-violet**

Flower symmetry: **actinomorphic**

Perianth type: **homochlamydeous**

Perianth fusion: **fused**

Shape of the sympetalous corolla or syntepalous perianth: **special type**

Inflorescence type: **rhipidium**
Dicliny: **synoecious**
Pollination syndrome: **insect-pollination**

Fruit, seed and dispersal

Fruit type: **dry fruit - capsule**
Fruit colour: **brown**
Reproduction type: **by seed/spores and vegetatively**
Dispersal unit (diaspore): **seed**
Dispersal strategy: **Allium (mainly autochory)**
Myrmecochory: **non-myrmecochorous (a)**

Belowground organs and clonality

Shoot metamorphosis: **rhizome**
Storage organ: **rhizome**
Type of clonal growth organ: **epigeogenous rhizome**
Freely dispersible organs of clonal growth: **absent**
Shoot life span (cyclicity): **dicyclic or polycyclic shoots prevailing**
Branching type of stem-derived organs of clonal growth: **sympodial**
Primary root: **absent**
Persistence of the clonal growth organ [year]: **4**
Number of clonal offspring: **1**
Lateral spreading distance by clonal growth [m]: **0.07**
Clonal index: **4**

Bud bank

Number of buds per shoot at the soil surface (root buds excluded): **5**
Number of buds per shoot at a depth of 0–10 cm (root buds excluded): **15**
Number of buds per shoot at a depth greater than 10 cm (root buds excluded): **0**
Size of the belowground bud bank (root buds excluded): **20**
Depth of the belowground bud bank (root buds excluded) [cm]: **4**
Number of buds per shoot at the soil surface (root buds included): **5**
Number of buds per shoot at a depth of 0–10 cm (root buds included): **15**
Number of buds per shoot at a depth greater than 10 cm (root buds included): **0**
Size of the belowground bud bank (root buds included): **20**
Depth of the belowground bud bank (root buds included) [cm]: **4**

Trophic mode

Parasitism and mycoheterotrophy: **autotrophic**
Carnivory: **non-carnivorous**
Symbiotic nitrogen fixation: **no nitrogen-fixing symbionts**

Taxon origin

Origin in the Czech Republic: **native**

Ecological indicator values

Ellenberg-type indicator values

Light indicator value: **8 - light plant, only exceptionally occurring at less than 40% of diffuse radiation incident in an open area**

Temperature indicator value: **8 - transition between values 7 and 9**

Moisture indicator value: **7 - humidity indicator, focus on well moistened, but not wet soils**

Reaction indicator value: **8 - transition between values 7 and 9, occurring mostly in calcium-rich conditions**

Nutrient indicator value: **3 - occurring at nutrient-poor sites more frequently than at average sites and exceptionally at rich sites**

Salinity indicator value: **3 - β -mesohaline, mostly on soils with low salt content**

Habitat and sociology

Affinity to the forest environment

Affinity to the forest environment in Thermophyticum: **0 - taxon that does not spontaneously occur in Czech forests**

Affinity to the forest environment in Mesophyticum and Oreophyticum: **0 - taxon that does not spontaneously occur in Czech forests**

Distribution and frequency

Floristic zone: **southern temperate, submeridional**

Floristic region: **Europe**

Continentality degree: **6**

Distribution range extension along the continentality gradient: **2**

Elevational belt in the Czech Republic: **lowlands**

Occurrence frequency in the basic grid mapping cells and quadrants of the basic grid mapping cells: **1**

taxon.data.freq_in_quad: 1

Threats and protection

Red List 2017 (national categories): **A1 - extinct taxon**

Red List 2017 (IUCN categories): **RE - regionally extinct**

Legal protection: **not protected by law**