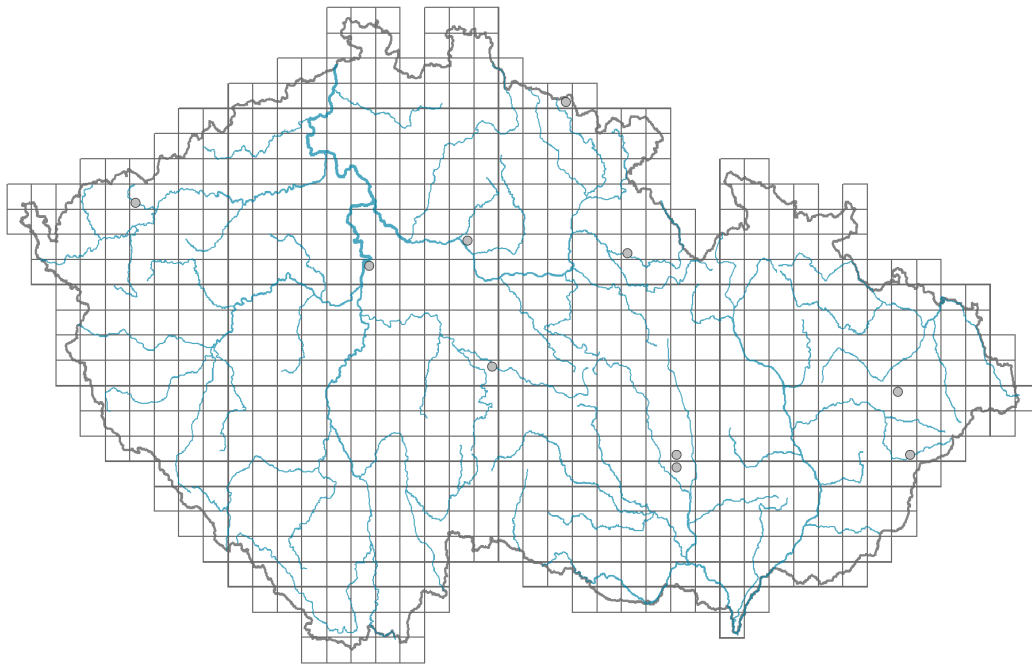


# *Lagurus ovatus*

## Distribution



© Petr Vobodil

### Map info

● revised records

○ unrevised records

On the map are not visualized records without the coordinates and records marked as incorrect or doubtful.



## Habitus and growth type

Height [m]: **0.15-0.3**

Growth form: **annual herb**

Life form: **therophyte**

Life strategy (Pierce method based on leaf traits): **R/SR**

Life strategy (Pierce method, C-score): **14.6 %**

Life strategy (Pierce method, S-score): **16.7 %**

Life strategy (Pierce method, R-score): **68.7 %**

## Leaf

Leaf presence and metamorphosis: **leaves present, not modified**

Leaf arrangement (phyllotaxis): **alternate**

Leaf shape: **simple - entire**

Stipules: **absent**

Petiole: **absent**

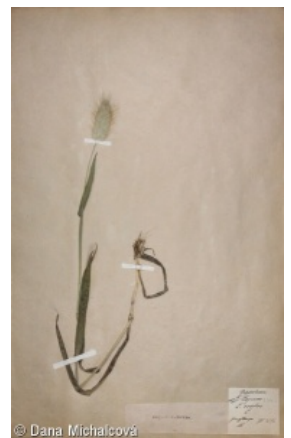
## Flower

Flowering period [month]: **May-July**

Flower colour: **white**

Perianth type: **reduced**

Perianth fusion: **reduced**



© Dana Michalčová



© Dana Michalčová

Inflorescence type: **pseudospica e spiculis composita**

## Fruit, seed and dispersal

Fruit type: **dry fruit - caryopsis**

Fruit colour: **brown**

Dispersal unit (diaspore): **fruit, infrutescence or its part**

Dispersal strategy: **Allium (mainly autochory)**

Myrmecochory: **non-myrmecochorous (b)**

## Trophic mode

Parasitism and mycoheterotrophy: **autotrophic**

Carnivory: **non-carnivorous**

Symbiotic nitrogen fixation: **no nitrogen-fixing symbionts**

## Taxon origin

Origin in the Czech Republic: **neophyte**

Invasion status: **casual**

Geographic origin: **Mediterranean**

Period of introduction: **Recent Past (1950-2000)**

Introduction pathway: **intentional - ornamental**

## Habitat and sociology

Affinity to the forest environment

Affinity to the forest environment in Thermophyticum: **0 - taxon that does not spontaneously occur in Czech forests**

Affinity to the forest environment in Mesophyticum and Oreophyticum: **0 - taxon that does not spontaneously occur in Czech forests**

## Threats and protection

Red List 2017 (national categories): **taxon is not on the Red List**

Red List 2017 (IUCN categories): **LC(NA) - least concern (taxon is not on the Red List)**

Legal protection: **not protected by law**

