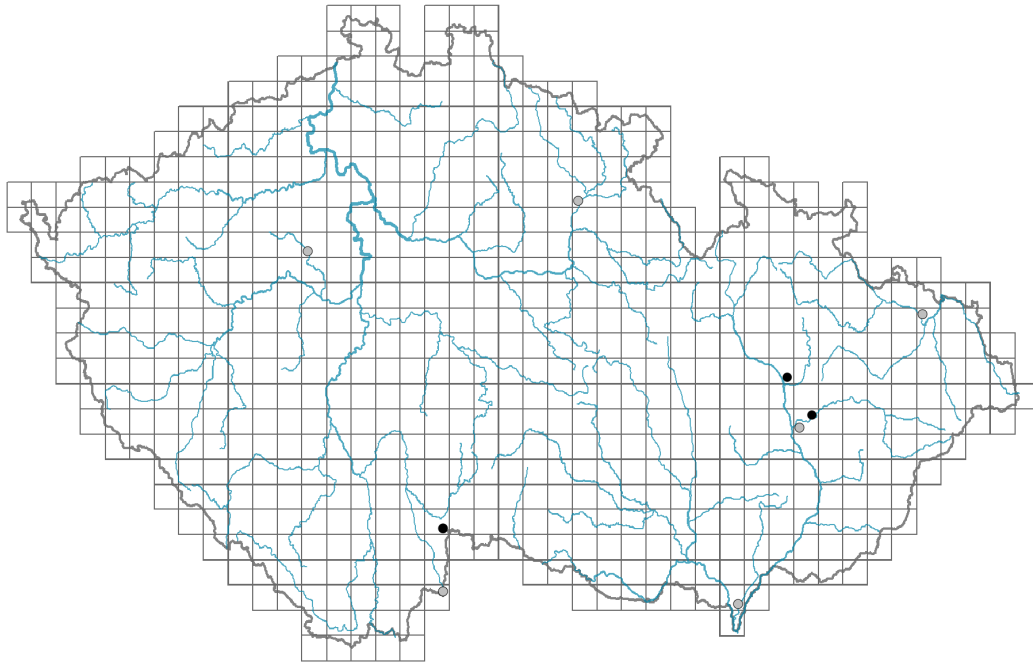


Leontodon saxatilis

Distribution



Map info

● revised records

● unrevised records

On the map are not visualized records without the coordinates and records marked as incorrect or doubtful.



Habitus and growth type

Height [m]: **0.03-0.35**

Growth form: **clonal herb**

Life form: **hemicryptophyte**

Life strategy: **CSR - competitor/stress-tolerator/ruderal**

Leaf

Leaf presence and metamorphosis: **leaves present, not modified**

Leaf arrangement (phyllotaxis): **rosulate**

Leaf shape: **simple - entire**

Stipules: **absent**

Petiole: **present**

Leaf life span: **evergreen**

Leaf anatomy: **mesomorphic**



Flower

Flowering period [month]: **July-August**

Flower colour: **yellow**

Flower symmetry: **zygomorphic**

Perianth type: **calyx reduced, corolla present**

Perianth fusion: **fused**

Shape of the sympetalous corolla or syntepalous perianth: **ligulate**

Calyx fusion: **pappus**

Inflorescence type: **anthodium solitarium**

Dicliny: **synoecious**

Generative reproduction type: **allogamy**

Pollination syndrome: **insect-pollination**

Pollinator spectrum: **solitary bees (honeybee, bumblebees, other Hymenoptera, hoverflies, flies s. l., meat flies s. l., other Diptera, butterflies, beetles, nitidulids)**

Fruit, seed and dispersal

Fruit type: **dry fruit - achene/cypsela/samara**

Reproduction type: **by seed/spores and vegetatively**

Dispersal unit (diaspore): **fruit, infrutescence or its part**

Dispersal strategy: **Epilobium (mainly anemochory and autochory)**

Myrmecochory: **probably non-myrmecochorous**

Belowground organs and clonality

Shoot metamorphosis: **rhizome**

Storage organ: **rhizome**

Trophic mode

Parasitism and mycoheterotrophy: **autotrophic**

Carnivory: **non-carnivorous**

Symbiotic nitrogen fixation: **no nitrogen-fixing symbionts**

Taxon origin

Origin in the Czech Republic: **native**

Habitat and sociology

Affinity to the forest environment

Affinity to the forest environment in Thermophyticum: **0 - taxon that does not spontaneously occur in Czech forests**

Affinity to the forest environment in Mesophyticum and Oreophyticum: **0 - taxon that does not spontaneously occur in Czech forests**

Distribution and frequency

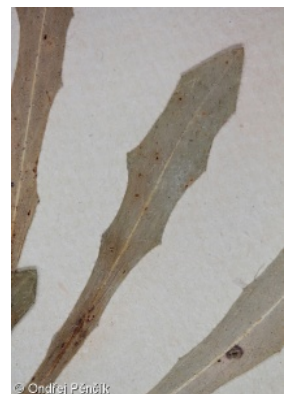
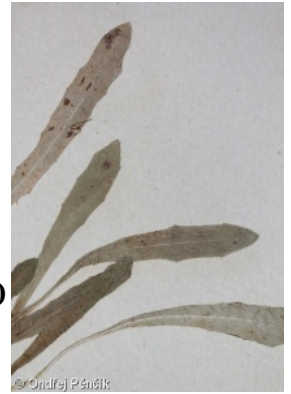
Floristic zone: **northern temperate, southern temperate, submeridional, meridional**

Floristic region: **Europe**

Elevational belt in the Czech Republic: **lowlands, colline belt**

Occurrence frequency in the basic grid mapping cells and quadrants of the basic grid mapping cells: **8**

taxon.data.freq_in_quad: **9**



Threats and protection

Red List 2017 (national categories): **A2 - missing taxon**

Red List 2017 (IUCN categories): **CR - critically endangered**

Legal protection: **critically threatened taxon**