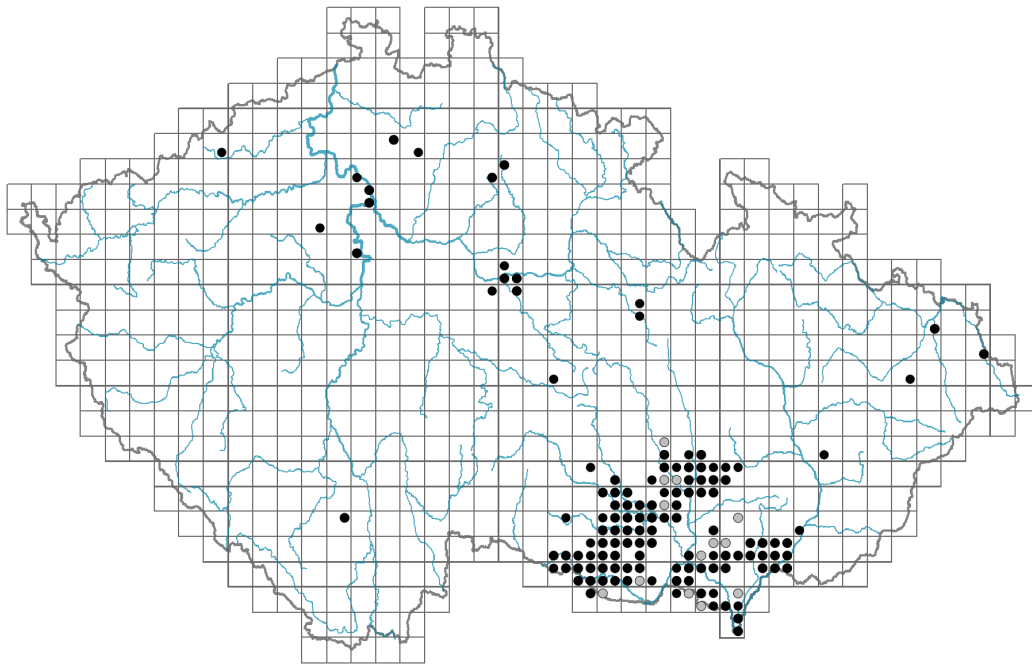


Linaria genistifolia

Distribution



© Pavel Veselý

Map info

● revised records

○ unrevised records

On the map are not visualized records without the coordinates and records marked as incorrect or doubtful.

Habitus and growth type

Height [m]: **0.3-1**

Growth form: **clonal herb**

Life form: **geophyte**

Life strategy: **CSR - competitor/stress-tolerator/ruderal**

Leaf

Leaf presence and metamorphosis: **leaves present, not modified**

Leaf arrangement (phyllotaxis): **alternate**

Leaf shape: **simple - entire**

Stipules: **absent**

Petiole: **absent**

Leaf life span: **summer green**

Flower

Flowering period [month]: **June-August**

Flower colour: **yellow**

Flower symmetry: **zygomorphic**

Perianth type: **calyx and corolla**

Perianth fusion: **fused**

Shape of the sympetalous corolla or syntepalous perianth: **personate**



© Pavel Veselý



Dana Moravcova

Calyx fusion: **synsepalous**
 Inflorescence type: **racemus**
 Dicliny: **synoecious**
 Generative reproduction type: **allogamy self-incompatibility**
 Pollination syndrome: **insect-pollination**



Fruit, seed and dispersal

Fruit type: **dry fruit - capsule**
 Fruit colour: **brown**
 Reproduction type: **by seed/spores and vegetatively**
 Dispersal unit (diaspore): **seed**
 Dispersal strategy: **Allium (mainly autochory)**
 Myrmecochory: **non-myrmecochorous (b) nv**



Belowground organs and clonality

Root metamorphosis: **root shoot**
 Type of clonal growth organ: **root with adventitious buds**
 Freely dispersible organs of clonal growth: **absent**
 Shoot life span (cyclicality): **monocyclic shoots prevailing**
 Branching type of stem-derived organs of clonal growth: **sympodial**
 Primary root: **absent**
 Persistence of the clonal growth organ [year]: **4**
 Number of clonal offspring: **3.5**
 Lateral spreading distance by clonal growth [m]: **0.1**
 Clonal index: **5**
 Position of root buds: **lateral roots**
 Role of root buds in life-history of a plant: **necessary**

Bud bank

Number of buds per shoot at the soil surface (root buds excluded): **5**
 Number of buds per shoot at a depth of 0–10 cm (root buds excluded): **9**
 Number of buds per shoot at a depth greater than 10 cm (root buds excluded): **0**
 Size of the belowground bud bank (root buds excluded): **14**
 Depth of the belowground bud bank (root buds excluded) [cm]: **4**
 Number of buds per shoot at the soil surface (root buds included): **5**
 Number of buds per shoot at a depth of 0–10 cm (root buds included): **17**
 Number of buds per shoot at a depth greater than 10 cm (root buds included): **15**
 Size of the belowground bud bank (root buds included): **37**
 Depth of the belowground bud bank (root buds included) [cm]: **9**



Trophic mode

Parasitism and mycoheterotrophy: **autotrophic**
 Carnivory: **non-carnivorous**
 Symbiotic nitrogen fixation: **no nitrogen-fixing symbionts**

Karyology

Chromosome number (2n): **12**

Ploidy level (x): **2**

2C genome size [Mbp]: **1523.95**

1Cx monoploid genome size [Mbp]: **761.97**

Genomic GC content: **39.9 %**

Taxon origin

Origin in the Czech Republic: **native**

Ecological indicator values

Ellenberg-type indicator values

Light indicator value: **8 - light plant, only exceptionally occurring at less than 40% of diffuse radiation incident in an open area**

Temperature indicator value: **7 - heat indicator, occurring in relatively warm lowlands**

Moisture indicator value: **2 - transition between values 1 and 3**

Reaction indicator value: **5 - indicator of moderate acidity, occurring rarely in strongly acidic as well as in neutral to alkaline conditions**

Nutrient indicator value: **2 - transition between values 1 and 3**

Salinity indicator value: **0 - not salt tolerant, glycophyte**

Indicator values for disturbance

Whole-community disturbance frequency indicator value: **-1.4**

Herb layer disturbance frequency indicator value: **-0.37**

Whole-community disturbance severity indicator value: **0.26**

Herb layer disturbance severity indicator value: **0.25**

Whole-community structure based disturbance indicator value: **0.29**

Herb layer structure-based disturbance indicator value: **0.34**

Habitat and sociology

Occurrence in habitats

6 Meadows and mesic pastures

6A Mesic Arrhenatherum meadows: **1 - rare occurrence**

8 Dry grasslands

8A Hercynian dry grasslands on rock outcrops: **2 - optimum**

8B Submediterranean dry grasslands on rock outcrops: **1 - rare occurrence**

8C Narrow-leaved sub-continental steppes: **2 - optimum**

8D Broad-leaved dry grasslands: **1 - rare occurrence**

8E Acidophilous dry grasslands: **2 - optimum**

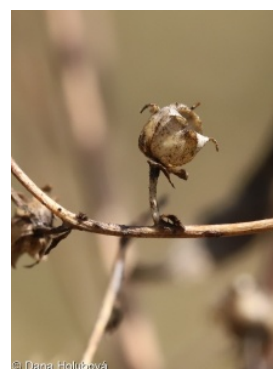
8F Thermophilous forest fringe vegetation: **1 - rare occurrence**

9 Sand grasslands and rock-outcrop vegetation

9B Open vegetation of acidic sands: **1 - rare occurrence**

9C Festuca grasslands on acidic sands: **1 - rare occurrence**

9D Pannonian sand steppes: **2 - optimum**



9E Acidophilous vegetation of spring therophytes and succulents: **1 - rare occurrence**

9F Basiphilous vegetation of spring therophytes and succulents: **1 - rare occurrence**

11 Heathlands and scrub

11A Dry lowland to subalpine heathlands: **1 - rare occurrence**

11L Tall mesic and xeric shrub: **1 - rare occurrence**

11N Low xeric scrub: **1 - rare occurrence**

12 Forests

12D Ravine forests: **1 - rare occurrence**

12H Peri-Alpidic basiphilous thermophilous oak forests: **1 - rare occurrence**

12I Sub-continental thermophilous oak forests: **1 - rare occurrence**

12J Acidophilous thermophilous oak forests: **2 - optimum**

12K Acidophilous oak forests: **1 - rare occurrence**

12O Peri-Alpidic pine forests: **1 - rare occurrence**

12W Pine and larch plantations: **1 - rare occurrence**

13 Anthropogenic vegetation

13D Perennial thermophilous ruderal vegetation: **1 - rare occurrence**

Affinity to the forest environment

Affinity to the forest environment in Thermophyticum: **0 - taxon that does not spontaneously occur in Czech forests**

Affinity to the forest environment in Mesophyticum and Oreophyticum: **0 - taxon that does not spontaneously occur in Czech forests**

Diagnostic taxon

Diagnostic taxon of classes: [TG *Festucetea vaginatae*](#)

Diagnostic taxon of alliances: [TGA *Festucion vaginatae*](#)

Diagnostic taxon of associations: [LCC02 *Genisto pilosae-Quercetum petraeae*](#), [TFC02 *Erysimo diffusi-Agrostietum capillaris*](#), [TGA01 *Diantho serotini-Festucetum vaginatae*](#), [THA04 *Helichryso arenarii-Festucetum pallentis*](#), [THG02 *Avenulo pratensis-Festucetum valesiaca*](#)

Constant taxon

Constant taxon of classes: [TG *Festucetea vaginatae*](#)

Constant taxon of alliances: [TGA *Festucion vaginatae*](#)

Constant taxon of associations: [LCC02 *Genisto pilosae-Quercetum petraeae*](#), [TGA01 *Diantho serotini-Festucetum vaginatae*](#)

Ecological specialization indices

Ecological specialization index for all vegetation types: **4.9**

Ecological specialization index for non-forest vegetation: **5.1**

Ecological specialization index for forest vegetation: **5.9**

Colonization ability

Index of colonization success (ICS): **3**

Index of colonization potential (ICP): **4**

Optimum successional age [years]: **27.5**

Distribution and frequency

Floristic zone: **submeridional, meridional**

Floristic region: **Europe, Western Siberia, Eastern America**

Elevational belt in the Czech Republic: **lowlands, colline belt**



Occurrence frequency in the basic grid mapping cells and quadrants of the basic grid mapping cells: 76

taxon.data.freq_in_quad: 150

Commonness in vegetation plots from the Czech Republic

Occurrence frequency in vegetation plots: **0.4 %**

Occurrence frequency in vegetation plots with a cover above 5%: **0 %**

Occurrence frequency in vegetation plots with a cover above 25%: **0 %**

Occurrence frequency in vegetation plots with a cover above 50%: **0 %**

Mean percentage cover in vegetation plots: **2 %**

Maximum percentage cover in vegetation plots: **4 %**

Number of habitats with taxon occurrence in the Czech Republic

Number of narrow habitats in which the taxon occurs: **23**

Number of narrow habitats in which the taxon has its optimum: **5**

Number of broad habitats in which the taxon occurs: **6**

Number of broad habitats in which the taxon has its optimum: **3**

Threats and protection

Red List 2017 (national categories): **C3 - vulnerable taxon**

Red List 2017 (IUCN categories): **NT - near threatened**

Legal protection: **not protected by law**

