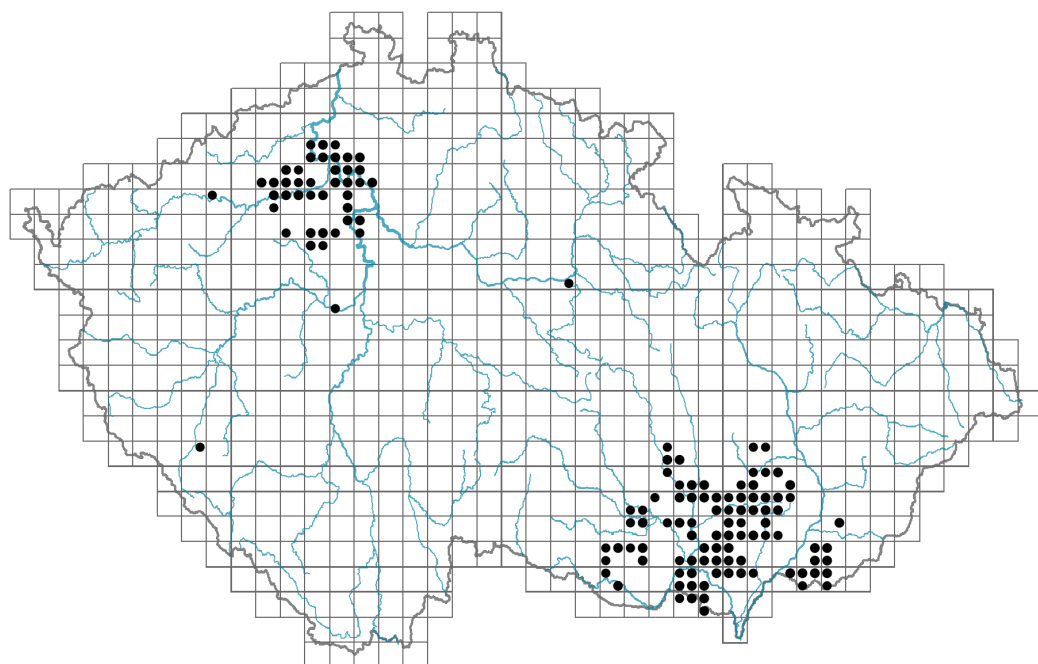


Linum tenuifolium

Distribution



Map info

● revised records

● unrevised records

On the map are not visualized records without the coordinates and records marked as incorrect or doubtful.

Habitus and growth type

Height [m]: **0.15-0.4**

Growth form: **polycarpic perennial non-clonal herb**

Life form: **hemicryptophyte (chamaephyte)**

Life strategy: **CS - competitor/stress-tolerator**

Life strategy (Pierce method based on leaf traits): **S/SR**

Life strategy (Pierce method, C-score): **0.3 %**

Life strategy (Pierce method, S-score): **65.9 %**

Life strategy (Pierce method, R-score): **33.8 %**



Leaf

Leaf presence and metamorphosis: **leaves present, not modified**

Leaf arrangement (phyllotaxis): **alternate**

Leaf shape: **simple - entire**

Stipules: **absent**

Petiole: **absent**

Leaf life span: **evergreen**

Leaf anatomy: **scleromorphic, mesomorphic**



Flower

Flowering period [month]: **June-August**

Flowering phase: **6 Cornus sanguinea-Melica uniflora (start of early summer)**

Flower colour: **pink, pink-violet**

Flower symmetry: **actinomorphic**

Perianth type: **calyx and corolla**

Perianth fusion: **free**

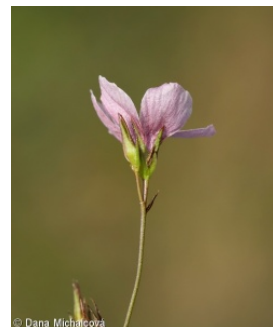
Calyx fusion: **aposepalous**

Inflorescence type: **dichasium**

Dicliny: **synoecious**

Generative reproduction type: **allogamy**

Pollination syndrome: **insect-pollination**



Fruit, seed and dispersal

Fruit type: **dry fruit - capsule**

Fruit colour: **brown**

Reproduction type: **only by seed/spores**

Dispersal unit (diaspore): **seed**

Dispersal strategy: **Allium (mainly autochory)**

Myrmecochory: **probably non-myrmecochorous**



Belowground organs and clonality

Shoot metamorphosis: **pleiocorm**

Storage organ: **pleiocorm**

Shoot life span (cyclicity): **monocyclic shoots prevailing**

Branching type of stem-derived organs of clonal growth: **sympodial**

Primary root: **present**

Position of root buds: **lateral roots**

Role of root buds in life-history of a plant: **additive**

Bud bank

Number of buds per shoot at the soil surface (root buds excluded): **5**

Number of buds per shoot at a depth of 0–10 cm (root buds excluded): **8**

Number of buds per shoot at a depth greater than 10 cm (root buds excluded): **0**

Size of the belowground bud bank (root buds excluded): **13**

Depth of the belowground bud bank (root buds excluded) [cm]: **3**

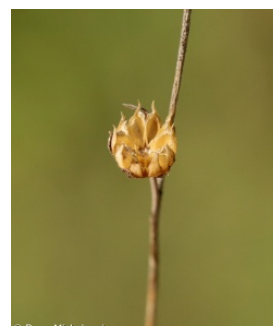
Number of buds per shoot at the soil surface (root buds included): **5**

Number of buds per shoot at a depth of 0–10 cm (root buds included): **14**

Number of buds per shoot at a depth greater than 10 cm (root buds included): **15**

Size of the belowground bud bank (root buds included): **34**

Depth of the belowground bud bank (root buds included) [cm]: **9**



Trophic mode

Parasitism and mycoheterotrophy: **autotrophic**

Carnivory: **non-carnivorous**

Symbiotic nitrogen fixation: **no nitrogen-fixing symbionts**

Taxon origin

Origin in the Czech Republic: **native**

Ecological indicator values

Ellenberg-type indicator values

Light indicator value: **9 - full light plant, occurring only in fully irradiated places, not at less than 50% of diffuse radiation incident in an open area**

Temperature indicator value: **8 - transition between values 7 and 9**

Moisture indicator value: **2 - transition between values 1 and 3**

Reaction indicator value: **8 - transition between values 7 and 9, occurring mostly in calcium-rich conditions**

Nutrient indicator value: **2 - transition between values 1 and 3**

Salinity indicator value: **0 - not salt tolerant, glycophyte**

Indicator values for disturbance

Whole-community disturbance frequency indicator value: **-0.06**

Herb layer disturbance frequency indicator value: **-0.06**

Whole-community disturbance severity indicator value: **0.19**

Herb layer disturbance severity indicator value: **0.23**

Whole-community structure based disturbance indicator value: **0.65**

Herb layer structure-based disturbance indicator value: **0.78**



Habitat and sociology

Occurrence in habitats

1 Vegetation of cliffs, screes and walls

1D Mobile calcareous screes: **1 - rare occurrence**

8 Dry grasslands

8B Submediterranean dry grasslands on rock outcrops: **1 - rare occurrence**

8C Narrow-leaved sub-continental steppes: **1 - rare occurrence**

8D Broad-leaved dry grasslands: **2 - optimum**

8F Thermophilous forest fringe vegetation: **1 - rare occurrence**

Affinity to the forest environment

Affinity to the forest environment in Thermophyticum: **0 - taxon that does not spontaneously occur in Czech forests**

Affinity to the forest environment in Mesophyticum and Oreophyticum: **0 - taxon that does not spontaneously occur in Czech forests**

Diagnostic taxon

Diagnostic taxon of alliances: [**THE Cirsio-Brachypodium pinnati**](#)

Diagnostic taxon of associations: [**SCA03 Teucris botryos-Melicetum ciliatae**](#), [**THE03 Polygalo majoris-Brachypodium pinnati**](#)

Constant taxon

Constant taxon of associations: [**SCA03 Teucris botryos-Melicetum ciliatae**](#)

Ecological specialization indices

Ecological specialization index for all vegetation types: **6**

Ecological specialization index for non-forest vegetation: **6**

Colonization ability

Index of colonization success (ICS): **2**

Index of colonization potential (ICP): **2**

Optimum successional age [years]: **30**

Distribution and frequency

Floristic zone: **southern temperate, submeridional, meridional**

Floristic region: **Europe**

Continentality degree: **6**

Distribution range extension along the continentality gradient: **5**

Elevational belt in the Czech Republic: **colline belt**

Occurrence frequency in the basic grid mapping cells and quadrants of the basic grid mapping cells: **63**

taxon.data.freq_in_quad: **135**

Commonness in vegetation plots from the Czech Republic

Occurrence frequency in vegetation plots: **0.3 %**

Occurrence frequency in vegetation plots with a cover above 5%: **7.5 %**

Occurrence frequency in vegetation plots with a cover above 25%: **1.3 %**

Occurrence frequency in vegetation plots with a cover above 50%: **0 %**

Mean percentage cover in vegetation plots: **3.2 %**

Maximum percentage cover in vegetation plots: **38 %**

Number of habitats with taxon occurrence in the Czech Republic

Number of narrow habitats in which the taxon occurs: **5**

Number of narrow habitats in which the taxon has its optimum: **1**

Number of broad habitats in which the taxon occurs: **2**

Number of broad habitats in which the taxon has its optimum: **1**

Threats and protection

Red List 2017 (national categories): **C3 - vulnerable taxon**

Red List 2017 (IUCN categories): **NT - near threatened**

Legal protection: **vulnerable taxon**