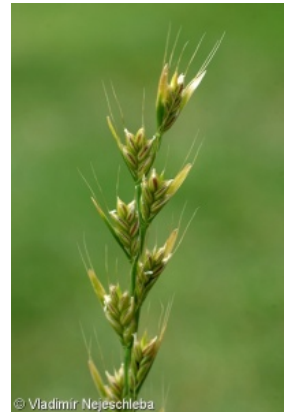
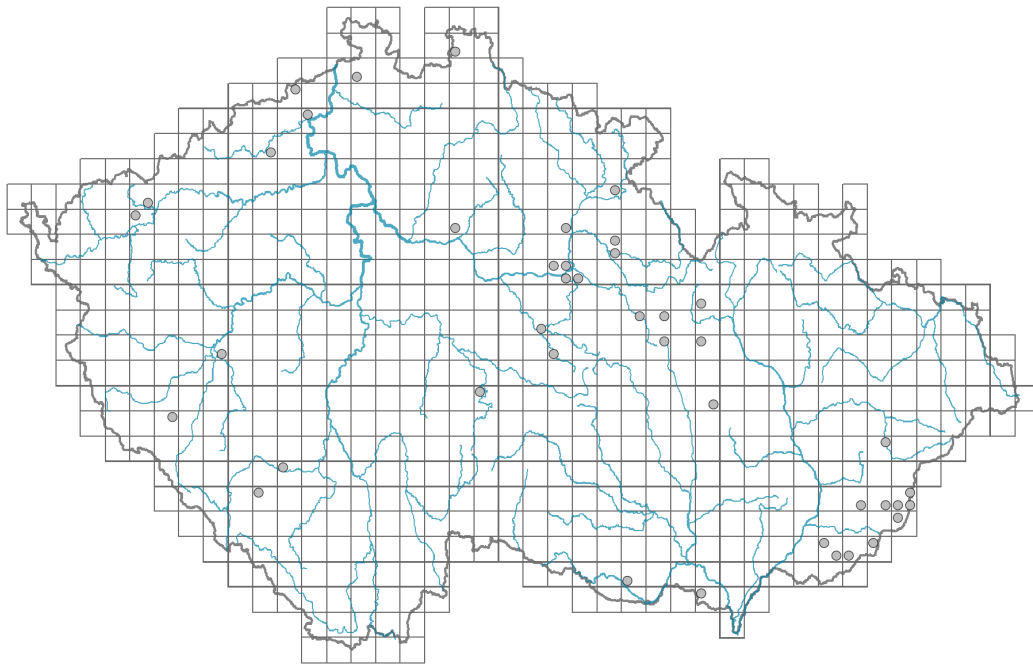


# *Lolium temulentum*

## Distribution



© Vladimír Nejšpíleba

### Map info

● revised records

○ unrevised records

On the map are not visualized records without the coordinates and records marked as incorrect or doubtful.

## Habitus and growth type

Height [m]: **0.3-0.9**

Growth form: **annual herb**

Life form: **therophyte**

Life strategy: **CR - competitor/ruderal**

Life strategy (Pierce method based on leaf traits): **CSR**

Life strategy (Pierce method, C-score): **33.3 %**

Life strategy (Pierce method, S-score): **26 %**

Life strategy (Pierce method, R-score): **40.7 %**

## Leaf

Leaf presence and metamorphosis: **leaves present, not modified**

Leaf arrangement (phyllotaxis): **alternate**

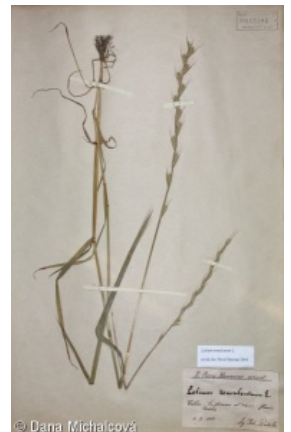
Leaf shape: **simple - entire**

Stipules: **absent**

Petiole: **absent**

Leaf life span: **summer green**

Leaf anatomy: **mesomorphic**



© Dana Michalčová



© Dana Holbovyá

## Flower

Flowering period [month]: **June-August**

Flowering phase: **8 Clematis vitalba-Galium sylvaticum (mid-summer)**

Flower colour: **green**

Perianth type: **reduced**

Perianth fusion: **reduced**

Inflorescence type: **spica e spiculis composita**

Dicliny: **synoecious**

Generative reproduction type: **autogamy**

Pollination syndrome: **selfing**

## Fruit, seed and dispersal

Fruit type: **dry fruit - caryopsis**

Fruit colour: **brown**

Reproduction type: **only by seed/spores**

Dispersal unit (diaspore): **fruit, infrutescence or its part**

Dispersal strategy: **Allium (mainly autochory)**

Myrmecochory: **non-myrmecochorous (b)**

## Belowground organs and clonality

Shoot life span (cyclicity): **monocyclic shoots prevailing**

Primary root: **absent**

### Bud bank

Number of buds per shoot at the soil surface (root buds excluded): **5**

Number of buds per shoot at a depth of 0–10 cm (root buds excluded): **0**

Number of buds per shoot at a depth greater than 10 cm (root buds excluded): **0**

Size of the belowground bud bank (root buds excluded): **5**

Depth of the belowground bud bank (root buds excluded) [cm]: **1**

Number of buds per shoot at the soil surface (root buds included): **5**

Number of buds per shoot at a depth of 0–10 cm (root buds included): **0**

Number of buds per shoot at a depth greater than 10 cm (root buds included): **0**

Size of the belowground bud bank (root buds included): **5**

Depth of the belowground bud bank (root buds included) [cm]: **1**

## Trophic mode

Parasitism and mycoheterotrophy: **autotrophic**

Carnivory: **non-carnivorous**

Symbiotic nitrogen fixation: **no nitrogen-fixing symbionts**

## Karyology

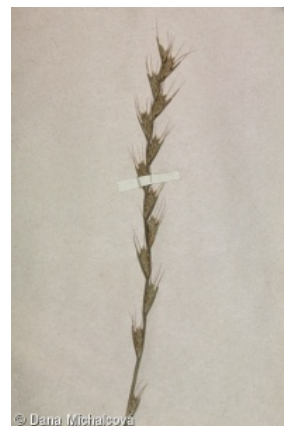
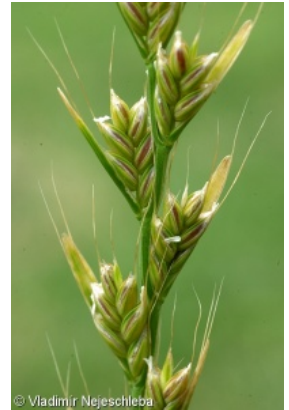
Chromosome number (2n): **14**

Ploidy level (x): **2**

2C genome size [Mbp]: **4931.49**

1Cx monoploid genome size [Mbp]: **2465.74**

Genomic GC content: **46.4 %**



## Taxon origin

Origin in the Czech Republic: **archaeophyte**

Invasion status: **casual**

Geographic origin: **Mediterranean**

Period of introduction: **Neolithic (5600-4200 BCE)**

Introduction pathway: **unintentional - agriculture**



## Ecological indicator values

Ellenberg-type indicator values

Light indicator value: **7 - half-light plant, mostly occurring at full light, but also in the shade up to about 30% of diffuse radiation incident in an open area**

Temperature indicator value: **7 - heat indicator, occurring in relatively warm lowlands**

Moisture indicator value: **4 - transition between values 3 and 5**

Reaction indicator value: **7 - indicator of slightly acidic to slightly basic conditions, never occurring in very acidic conditions**

Nutrient indicator value: **6x - transition between values 5 and 7 (generalist)**

Salinity indicator value: **0 - not salt tolerant, glycophyte**



## Habitat and sociology

Affinity to the forest environment

Affinity to the forest environment in Thermophyticum: **0 - taxon that does not spontaneously occur in Czech forests**

Affinity to the forest environment in Mesophyticum and Oreophyticum: **0 - taxon that does not spontaneously occur in Czech forests**



## Distribution and frequency

Floristic zone: **northern temperate, southern temperate, submeridional, meridional**

Floristic region: **Europe, Western Asia**

Distribution range extension along the continentality gradient: **5**

Elevational belt in the Czech Republic: **colline belt, submontane belt**

Occurrence frequency in the basic grid mapping cells and quadrants of the basic grid mapping cells: **36**

taxon.data.freq\_in\_quad: **42**

Commonness in vegetation plots from the Czech Republic

Occurrence frequency in vegetation plots: **0 %**

Occurrence frequency in vegetation plots with a cover above 5%: **0 %**

Occurrence frequency in vegetation plots with a cover above 25%: **0 %**

Occurrence frequency in vegetation plots with a cover above 50%: **0 %**

Mean percentage cover in vegetation plots: **1 %**

Maximum percentage cover in vegetation plots: **1 %**



## Threats and protection

Red List 2017 (national categories): **A2 - missing taxon**

Red List 2017 (IUCN categories): **RE - regionally extinct**

Legal protection: **not protected by law**

