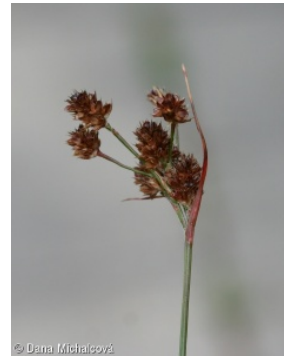
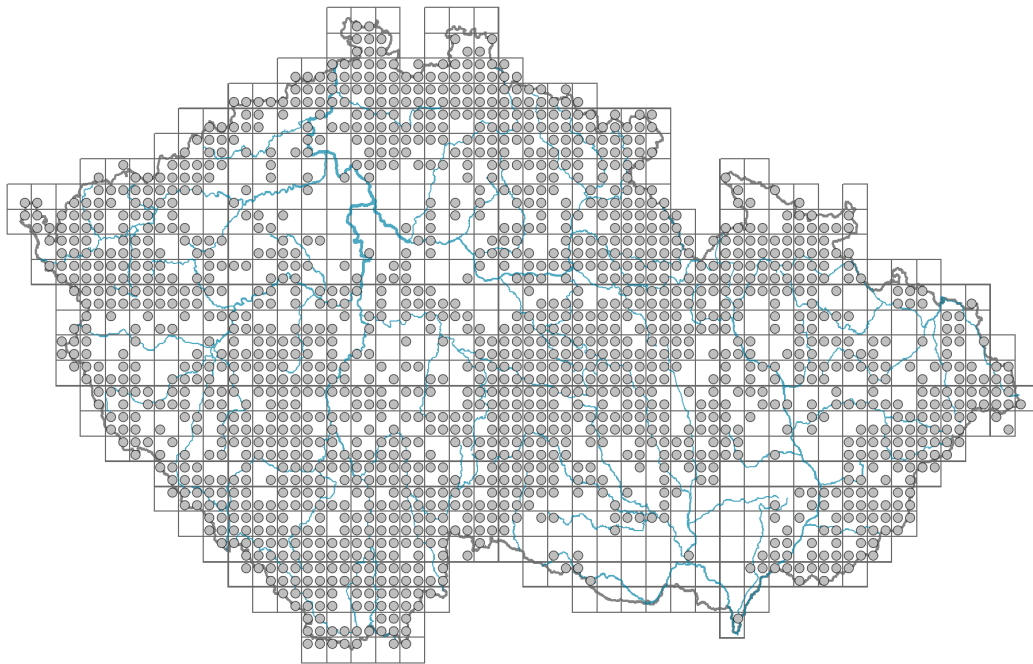


Luzula multiflora

Distribution



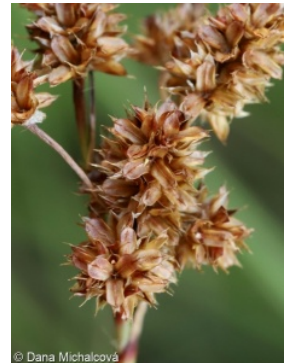
© Dana Michalcová

Map info

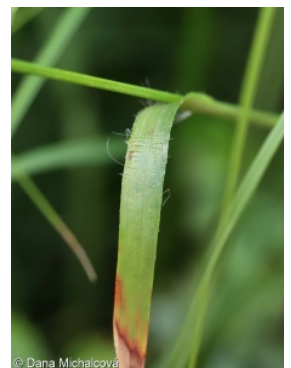
● revised records

○ unrevised records

On the map are not visualized records without the coordinates and records marked as incorrect or doubtful.



© Dana Michalcová



© Dana Michalcová

Habitus and growth type

Height [m]: **0.15-0.45**

Growth form: **clonal herb**

Life form: **hemicryptophyte**

Life strategy: **CS - competitor/stress-tolerator**

Life strategy (Pierce method based on leaf traits): **SR**

Life strategy (Pierce method, C-score): **9.7 %**

Life strategy (Pierce method, S-score): **47.3 %**

Life strategy (Pierce method, R-score): **42.9 %**

Leaf

Leaf presence and metamorphosis: **leaves present, not modified**

Leaf arrangement (phyllotaxis): **alternate**

Leaf shape: **simple - entire**

Stipules: **absent**

Petiole: **absent**

Leaf life span: **summer green**

Leaf anatomy: **mesomorphic**

Flower

Flowering period [month]: **May-July**

Flowering phase: **5 Sorbus aucuparia-Galium odoratum (end of mid-spring)**
Flower colour: **brown**
Flower symmetry: **actinomorphic**
Perianth type: **homochlamydeous**
Perianth fusion: **free**
Inflorescence type: **anthella**
Dicliny: **synoecious**
Generative reproduction type: **mixed mating**
Pollination syndrome: **wind-pollination, insect-pollination**



Fruit, seed and dispersal

Fruit type: **dry fruit - capsule**
Reproduction type: **by seed/spores and vegetatively**
Dispersal unit (diaspore): **seed**
Dispersal strategy: **Allium (mainly autochory)**
Myrmecochory: **myrmecochorous**

Belowground organs and clonality

Shoot metamorphosis: **rhizome**
Storage organ: **rhizome, tuft**
Type of clonal growth organ: **epigeogenous rhizome**
Freely dispersible organs of clonal growth: **absent**
Primary root: **absent**
Persistence of the clonal growth organ [year]: **4**
Number of clonal offspring: **6**
Lateral spreading distance by clonal growth [m]: **0.01**
Clonal index: **4**

Bud bank

Number of buds per shoot at the soil surface (root buds excluded): **5**
Number of buds per shoot at a depth of 0–10 cm (root buds excluded): **15**
Number of buds per shoot at a depth greater than 10 cm (root buds excluded): **0**
Size of the belowground bud bank (root buds excluded): **20**
Depth of the belowground bud bank (root buds excluded) [cm]: **4**
Number of buds per shoot at the soil surface (root buds included): **5**
Number of buds per shoot at a depth of 0–10 cm (root buds included): **15**
Number of buds per shoot at a depth greater than 10 cm (root buds included): **0**
Size of the belowground bud bank (root buds included): **20**
Depth of the belowground bud bank (root buds included) [cm]: **4**

Trophic mode

Parasitism and mycoheterotrophy: **autotrophic**
Carnivory: **non-carnivorous**
Symbiotic nitrogen fixation: **no nitrogen-fixing symbionts**

Karyology

Chromosome number (2n): **36 (24)**

Ploidy level (x): **6 (4)**

2C genome size [Mbp]: **2058.02**

1Cx monoploid genome size [Mbp]: **343**

Genomic GC content: **35.9 %**

Taxon origin

Origin in the Czech Republic: **native**

Ecological indicator values

Ellenberg-type indicator values

Light indicator value: **7 - half-light plant, mostly occurring at full light, but also in the shade up to about 30% of diffuse radiation incident in an open area**

Temperature indicator value: **5 - moderate heat indicator, occurring from lowland to montane belt, mainly in submontane-temperate areas**

Moisture indicator value: **4 - transition between values 3 and 5**

Reaction indicator value: **4 - transition between values 3 and 5**

Nutrient indicator value: **3 - occurring at nutrient-poor sites more frequently than at average sites and exceptionally at rich sites**

Salinity indicator value: **0 - not salt tolerant, glycophyte**

Habitat and sociology

Occurrence in habitats

1 Vegetation of cliffs, screes and walls

1B Siliceous cliffs and block fields: **1 - rare occurrence**

2 Alpine and subalpine grasslands

2A Alpine grasslands on siliceous bedrock: **1 - rare occurrence**

2B Subalpine tall-forb and tall-grass vegetation: **1 - rare occurrence**

4 Wetland and riverine herbaceous vegetation

4G Tall-sedge beds: **1 - rare occurrence**

4H Vegetation of low annual hygrophilous herbs: **1 - rare occurrence**

4K Petasites fringes of montane brooks: **1 - rare occurrence**

5 Vegetation of springs and mires

5B Lowland to montane soft-water springs: **1 - rare occurrence**

5C Alpine and subalpine soft-water springs: **1 - rare occurrence**

5D Calcareous fens: **1 - rare occurrence**

5E Acidic moss-rich fens and peatland meadows: **2 - optimum**

5F Transitional mires: **1 - rare occurrence**

5G Raised bogs: **1 - rare occurrence**

6 Meadows and mesic pastures

6B Montane mesic meadows: **2 - optimum**

6C Pastures and park grasslands: **1 - rare occurrence**

6E Wet Cirsium meadows: **1 - rare occurrence**

6F Intermittently wet Molinia meadows: **2 - optimum**

6G Vegetation of wet disturbed soils: **1 - rare occurrence**

7 Acidophilous grasslands

7A Subalpine and montane acidophilous grasslands: **2 - optimum**

7B Submontane Nardus grasslands: **2 - optimum**

9 Sand grasslands and rock-outcrop vegetation

9B Open vegetation of acidic sands: **1 - rare occurrence**

9C Festuca grasslands on acidic sands: **1 - rare occurrence**

11 Heathlands and scrub

11A Dry lowland to subalpine heathlands: **1 - rare occurrence**

11D Subalpine acidophilous Pinus mugo scrub: **1 - rare occurrence**

11I Willow carrs: **1 - rare occurrence**

12 Forests

12A Alder carrs: **1 - rare occurrence**

12K Acidophilous oak forests: **1 - rare occurrence**

12L Boreo-continental pine forests: **1 - rare occurrence**

12R Acidophilous spruce forests: **1 - rare occurrence**

Affinity to the forest environment

Affinity to the forest environment in Thermophyticum: **2.1 - taxon occurring both in the forest and open vegetation**

Affinity to the forest environment in Mesophyticum and Oreophyticum: **2.1 - taxon occurring both in the forest and open vegetation**

Colonization ability

Index of colonization success (ICS): **1**

Distribution and frequency

Floristic zone: **arctic, boreal, northern temperate, southern temperate, submeridional, meridional, subtropical, tropical, austral or antarctic**

Floristic region: **circumpolar**

Distribution range extension along the continentality gradient: **5**

Elevational belt in the Czech Republic: **lowlands, colline belt, submontane belt, montane belt, subalpine belt**

Occurrence frequency in the basic grid mapping cells and quadrants of the basic grid mapping cells: **587**

taxon.data.freq_in_quad: **1595**

Number of habitats with taxon occurrence in the Czech Republic

Number of narrow habitats in which the taxon occurs: **28**

Number of narrow habitats in which the taxon has its optimum: **5**

Number of broad habitats in which the taxon occurs: **9**

Number of broad habitats in which the taxon has its optimum: **3**

Threats and protection

Red List 2017 (national categories): **taxon is not on the Red List**

Red List 2017 (IUCN categories): **LC(NA) - least concern (taxon is not on the Red List)**

Legal protection: **not protected by law**