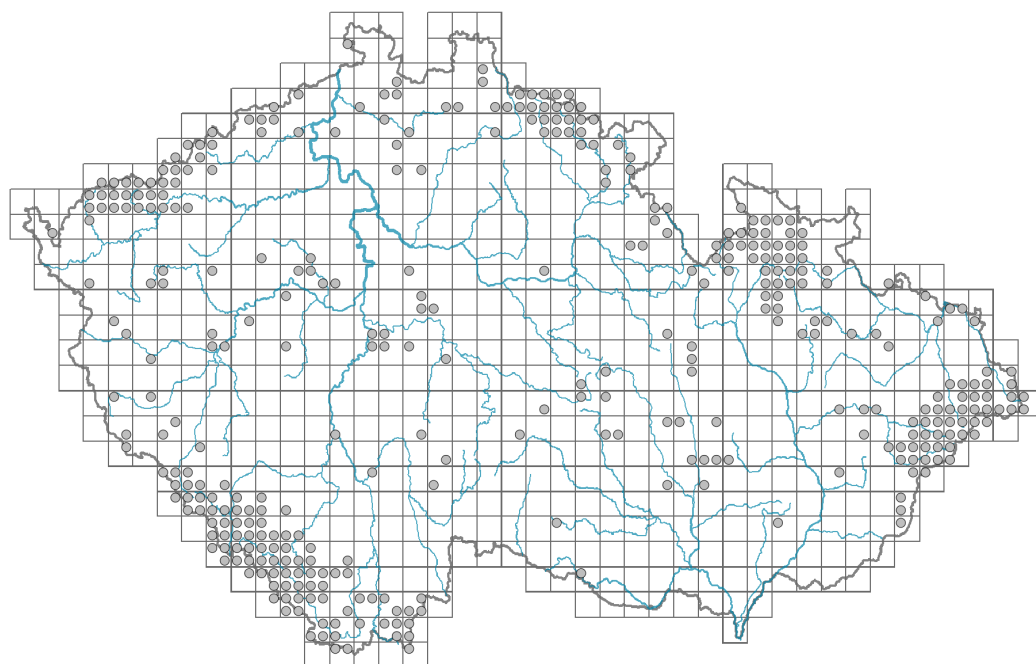


# *Luzula sylvatica*

## Distribution

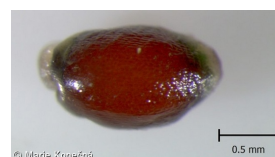
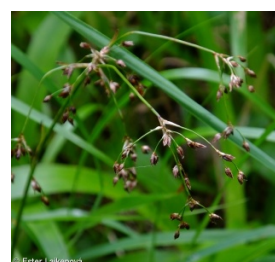


### Map info

● revised records

○ unrevised records

On the map are not visualized records without the coordinates and records marked as incorrect or doubtful.



## Habitus and growth type

Height [m]: **0.45-0.9**

Growth form: **clonal herb**

Life form: **hemicryptophyte**

Life strategy: **C - competitor**

Life strategy (Pierce method based on leaf traits): **CS/CSR**

Life strategy (Pierce method, C-score): **49 %**

Life strategy (Pierce method, S-score): **35.5 %**

Life strategy (Pierce method, R-score): **15.5 %**

## Leaf

Leaf presence and metamorphosis: **leaves present, not modified**

Leaf arrangement (phyllotaxis): **alternate**

Leaf shape: **simple - entire**

Stipules: **absent**

Petiole: **absent**

Leaf life span: **evergreen**

Leaf anatomy: **mesomorphic, hygromorphic**

## Flower

Flowering period [month]: **May-June**

Flowering phase: **3 Prunus avium-Ranunculus auricomus (end of early spring)**

Flower colour: **brown**

Flower symmetry: **actinomorphic**

Perianth type: **homochlamydeous**

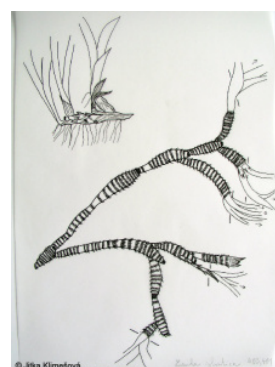
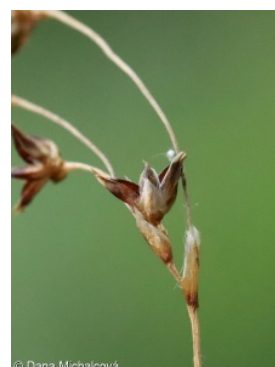
Perianth fusion: **free**

Inflorescence type: **anthella**

Dicliny: **synoecious**

Generative reproduction type: **mixed mating**

Pollination syndrome: **wind-pollination**



## Fruit, seed and dispersal

Fruit type: **dry fruit - capsule**

Reproduction type: **by seed/spores and vegetatively**

Dispersal unit (diaspore): **seed**

Dispersal strategy: **Allium (mainly autochory)**

Myrmecochory: **myrmecochorous**

## Belowground organs and clonality

Shoot metamorphosis: **stolon, rhizome**

Storage organ: **stolon, rhizome, tuft**

Type of clonal growth organ: **epigeogenous rhizome**

Freely dispersible organs of clonal growth: **absent**

Shoot life span (cyclicity): **dicyclic or polycyclic shoots prevailing**

Branching type of stem-derived organs of clonal growth: **sympodial**

Primary root: **absent**

Persistence of the clonal growth organ [year]:

Number of clonal offspring: **0.8**

Lateral spreading distance by clonal growth [m]: **0.1**

Clonal index: **4**

## Bud bank

Number of buds per shoot at the soil surface (root buds excluded):

Number of buds per shoot at a depth of 0–10 cm (root buds excluded):

Number of buds per shoot at a depth greater than 10 cm (root buds excluded):

Size of the belowground bud bank (root buds excluded):

Depth of the belowground bud bank (root buds excluded) [cm]:

Number of buds per shoot at the soil surface (root buds included):

Number of buds per shoot at a depth of 0–10 cm (root buds included):

Number of buds per shoot at a depth greater than 10 cm (root buds included):

Size of the belowground bud bank (root buds included):

Depth of the belowground bud bank (root buds included) [cm]:

## Trophic mode

Parasitism and mycoheterotrophy: **autotrophic**

Carnivory: **non-carnivorous**

Symbiotic nitrogen fixation: **no nitrogen-fixing symbionts**

## Karyology

Chromosome number (2n): **12**

Ploidy level (x): **2**

2C genome size [Mbp]: **952.86**

1Cx monoploid genome size [Mbp]: **476.43**

Genomic GC content: **34.1 %**

## Taxon origin

Origin in the Czech Republic: **native**

## Ecological indicator values

### Ellenberg-type indicator values

Light indicator value: **4x - transition between values 3 and 5 (generalist)**

Temperature indicator value: **4 - transition between values 3 and 5**

Moisture indicator value: **5 - indicator of fresh soils, focus on soils of average moisture, missing on wet and on soils that frequently dry out**

Reaction indicator value: **3 - acidity indicator, occurring mainly in acidic conditions, exceptionally in neutral conditions**

Nutrient indicator value: **4 - transition between values 3 and 5**

Salinity indicator value: **0 - not salt tolerant, glycophyte**

### Indicator values for disturbance

Whole-community disturbance frequency indicator value: **-1.79**

Herb layer disturbance frequency indicator value: **-0.67**

Whole-community disturbance severity indicator value: **0.29**

Herb layer disturbance severity indicator value: **0.19**

Whole-community structure based disturbance indicator value: **0.14**

Herb layer structure-based disturbance indicator value: **0.2**

## Habitat and sociology

### Occurrence in habitats

#### 2 Alpine and subalpine grasslands

2A Alpine grasslands on siliceous bedrock: **1 - rare occurrence**

2B Subalpine tall-forb and tall-grass vegetation: **2 - optimum**

#### 4 Wetland and riverine herbaceous vegetation

4K Petasites fringes of montane brooks: **1 - rare occurrence**

#### 5 Vegetation of springs and mires

5B Lowland to montane soft-water springs: **1 - rare occurrence**

5C Alpine and subalpine soft-water springs: **1 - rare occurrence**

#### 7 Acidophilous grasslands

7A Subalpine and montane acidophilous grasslands: **2 - optimum**

7B Submontane Nardus grasslands: **1 - rare occurrence**

#### 11 Heathlands and scrub

11A Dry lowland to subalpine heathlands: **1 - rare occurrence**

11D Subalpine acidophilous Pinus mugo scrub: **2 - optimum**

11H Subalpine deciduous scrub: **2 - optimum**

11R Scrub and pioneer woodland of forests clearings: **2 - optimum**

## 12 Forests

12B Alluvial forests: **1 - rare occurrence**

12E Herb-rich beech forests: **1 - rare occurrence**

12G Acidophilous beech forests: **2 - optimum**

12L Boreo-continental pine forests: **1 - rare occurrence**

12R Acidophilous spruce forests: **2 - optimum**

12S Basiphilous spruce forests: **2 - optimum**

12V Spruce plantations: **1 - rare occurrence**

## 13 Anthropogenic vegetation

13F Herbaceous vegetation of forests clearings and Rubus scrub: **2 - optimum**

## Affinity to the forest environment

Affinity to the forest environment in Mesophyticum and Oreophyticum: **2.1 - taxon occurring both in the forest and open vegetation**

## Diagnostic taxon

Diagnostic taxon of alliances: [LFC \*Piceion abietis\*](#)

Diagnostic taxon of associations: [ADA03 \*Violo sudeticae-Deschampsietum cespitosae\*](#), [ADC01 \*Salici silesiacae-Betuletum carpaticae\*](#), [LFC01 \*Calamagrostio villosae-Piceetum abietis\*](#), [LFC02 \*Athyrio distentifolii-Piceetum abietis\*](#), [LFC03 \*Equiseto sylvatici-Piceetum abietis\*](#)

## Constant taxon

Constant taxon of associations: [LFC02 \*Athyrio distentifolii-Piceetum abietis\*](#), [LFC03 \*Equiseto sylvatici-Piceetum abietis\*](#)

## Ecological specialization indices

Ecological specialization index for all vegetation types: **5.2**

Ecological specialization index for non-forest vegetation: **4.4**

Ecological specialization index for forest vegetation: **5.7**

## Colonization ability

Index of colonization success (ICS): **5**

Index of colonization potential (ICP): **6**

Optimum successional age [years]: **7**

## Distribution and frequency

Floristic zone: **northern temperate, southern temperate, submeridional**

Floristic region: **Europe**

Elevational belt in the Czech Republic: **montane belt, subalpine belt**

Occurrence frequency in the basic grid mapping cells and quadrants of the basic grid mapping cells: **203**

taxon.data.freq\_in\_quad: **368**

## Commonness in vegetation plots from the Czech Republic

Occurrence frequency in vegetation plots: **0.7 %**

Occurrence frequency in vegetation plots with a cover above 5%: **22.7 %**

Occurrence frequency in vegetation plots with a cover above 25%: **3.7 %**

Occurrence frequency in vegetation plots with a cover above 50%: **0 %**

Mean percentage cover in vegetation plots: **5.6 %**

Maximum percentage cover in vegetation plots: **38 %**

Number of habitats with taxon occurrence in the Czech Republic

Number of narrow habitats in which the taxon occurs: **19**

Number of narrow habitats in which the taxon has its optimum: **9**

Number of broad habitats in which the taxon occurs: **7**

Number of broad habitats in which the taxon has its optimum: **5**

### **Threats and protection**

Red List 2017 (national categories): **taxon is not on the Red List**

Red List 2017 (IUCN categories): **LC(NA) - least concern (taxon is not on the Red List)**

Legal protection: **not protected by law**