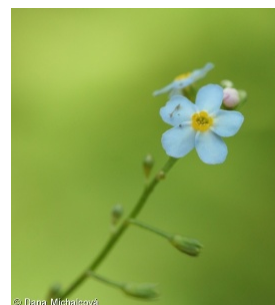
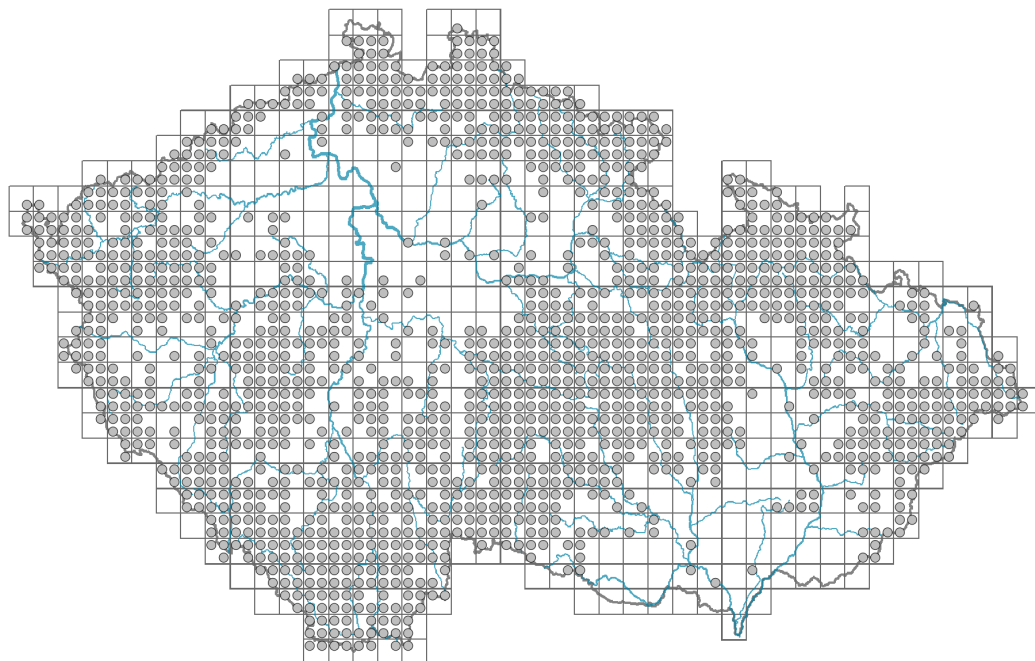


# *Myosotis nemorosa*

## Distribution



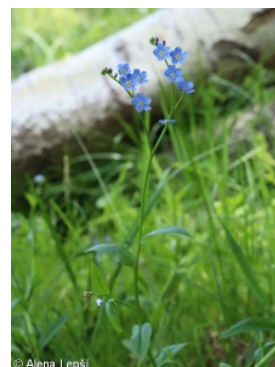
© Dana Michalová

### Map info

● revised records

○ unrevised records

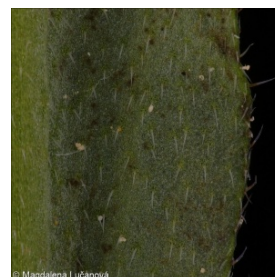
On the map are not visualized records without the coordinates and records marked as incorrect or doubtful.



© Alena Lepší



© Daniela Barbová-Dělichová



© Magdalena Lučanová

## Habitus and growth type

Height [m]: **0.2-0.7**Growth form: **polycarpic perennial non-clonal herb**Life form: **hemicryptophyte**Life strategy: **CSR - competitor/stress-tolerator/ruderal**

## Leaf

Leaf presence and metamorphosis: **leaves present, not modified**Leaf arrangement (phyllotaxis): **alternate**Leaf shape: **simple - entire**Stipules: **absent**Petiole: **absent**Leaf life span: **evergreen**Leaf anatomy: **hygromorphic, helomorphic**

## Flower

Flowering period [month]: **May-August**Flower colour: **blue**Flower symmetry: **actinomorphic**Perianth type: **calyx and corolla**Perianth fusion: **fused**

Shape of the sympetalous corolla or syntepalous perianth: **rotate**  
Calyx fusion: **synsepalous**  
Inflorescence type: **cincinnus**  
Dicliny: **synoecious**  
Generative reproduction type: **facultative allogamy**  
Pollination syndrome: **insect-pollination, selfing**



### **Fruit, seed and dispersal**

Fruit type: **dry fruit - cluster of four one-seeded nutlets**  
Fruit colour: **black**  
Reproduction type: **by seed/spores and vegetatively**  
Dispersal unit (diaspore): **fruit, infructescence or its part, shoot fragment**  
Dispersal strategy: **Sparganium (mainly autochory and hydrochory)**  
Myrmecochory: **myrmecochorous**

### **Belowground organs and clonality**

Shoot metamorphosis: **rhizome**  
Storage organ: **rhizome**  
Primary root: **present**  
Bud bank  
Number of buds per shoot at the soil surface (root buds excluded): **5**  
Number of buds per shoot at a depth of 0–10 cm (root buds excluded): **15**  
Number of buds per shoot at a depth greater than 10 cm (root buds excluded): **0**  
Size of the belowground bud bank (root buds excluded): **20**  
Depth of the belowground bud bank (root buds excluded) [cm]: **4**  
Number of buds per shoot at the soil surface (root buds included): **5**  
Number of buds per shoot at a depth of 0–10 cm (root buds included): **15**  
Number of buds per shoot at a depth greater than 10 cm (root buds included): **0**  
Size of the belowground bud bank (root buds included): **20**  
Depth of the belowground bud bank (root buds included) [cm]: **4**

### **Trophic mode**

Parasitism and mycoheterotrophy: **autotrophic**  
Carnivory: **non-carnivorous**  
Symbiotic nitrogen fixation: **no nitrogen-fixing symbionts**

### **Karyology**

Chromosome number (2n): **22 (44)**  
Ploidy level (x): **2 (4)**  
2C genome size [Mbp]: **682.51**  
1Cx monoploid genome size [Mbp]: **341.25**  
Genomic GC content: **41.1 %**

## Taxon origin

Origin in the Czech Republic: **native**

## Ecological indicator values

Ellenberg-type indicator values

Light indicator value: **7x - half-light plant, mostly occurring at full light, but also in the shade up to about 30% of diffuse radiation incident in an open area (generalist)**

Temperature indicator value: **5 - moderate heat indicator, occurring from lowland to montane belt, mainly in submontane-temperate areas**

Moisture indicator value: **8 - transition between values 7 and 9**

Reaction indicator value: **5 - indicator of moderate acidity, occurring rarely in strongly acidic as well as in neutral to alkaline conditions**

Nutrient indicator value: **6 - transition between values 5 and 7**

Salinity indicator value: **0 - not salt tolerant, glycophyte**

## Habitat and sociology

Occurrence in habitats

2 Alpine and subalpine grasslands

2B Subalpine tall-forb and tall-grass vegetation: **2 - optimum**

3 Aquatic vegetation

3B Macrophytic vegetation of water streams: **1 - rare occurrence**

3C Macrophytic vegetation of oligotrophic lakes and pools: **1 - rare occurrence**

4 Wetland and riverine herbaceous vegetation

4A Reed-beds of eutrophic still waters: **1 - rare occurrence**

4C Eutrophic vegetation of muddy substrata: **1 - rare occurrence**

4D Riverine reed vegetation: **2 - optimum**

4E Reed vegetation of brooks: **2 - optimum**

4F Mesotrophic vegetation of muddy substrata: **1 - rare occurrence**

4G Tall-sedge beds: **1 - rare occurrence**

4H Vegetation of low annual hygrophilous herbs: **1 - rare occurrence**

4I Vegetation of nitrophilous annual hygrophilous herbs: **1 - rare occurrence**

4J River gravel banks: **1 - rare occurrence**

4K Petasites fringes of montane brooks: **2 - optimum**

4L Nitrophilous herbaceous fringes of lowland rivers: **1 - rare occurrence**

5 Vegetation of springs and mires

5B Lowland to montane soft-water springs: **2 - optimum**

5C Alpine and subalpine soft-water springs: **1 - rare occurrence**

5D Calcareous fens: **1 - rare occurrence**

5E Acidic moss-rich fens and peatland meadows: **2 - optimum**

5F Transitional mires: **2 - optimum**

5H Wet peat soils and bog hollows: **1 - rare occurrence**

6 Meadows and mesic pastures

6A Mesic Arrhenatherum meadows: **1 - rare occurrence**

6B Montane mesic meadows: **2 - optimum**

6C Pastures and park grasslands: **1 - rare occurrence**

6D Alluvial meadows of lowland rivers: **1 - rare occurrence**

6E Wet *Cirsium* meadows: **2 - optimum**

6F Intermittently wet *Molinia* meadows: **2 - optimum**

6G Vegetation of wet disturbed soils: **1 - rare occurrence**

## 7 Acidophilous grasslands

7A Subalpine and montane acidophilous grasslands: **1 - rare occurrence**

7B Submontane *Nardus* grasslands: **1 - rare occurrence**

## 11 Heathlands and scrub

11D Subalpine acidophilous *Pinus mugo* scrub: **1 - rare occurrence**

11H Subalpine deciduous scrub: **2 - optimum**

11I Willow carrs: **2 - optimum**

11J Willow galleries of loamy and sandy river banks: **2 - optimum**

11L Tall mesic and xeric shrub: **1 - rare occurrence**

11R Scrub and pioneer woodland of forests clearings: **1 - rare occurrence**

## 12 Forests

12A Alder carrs: **2 - optimum**

12B Alluvial forests: **2 - optimum**

12F Limestone beech forests: **1 - rare occurrence**

12G Acidophilous beech forests: **1 - rare occurrence**

12Q Peatland birch forests: **1 - rare occurrence**

12R Acidophilous spruce forests: **1 - rare occurrence**

12S Basiphilous spruce forests: **1 - rare occurrence**

12V Spruce plantations: **1 - rare occurrence**

## 13 Anthropogenic vegetation

13E Perennial nitrophilous herbaceous vegetation of mesic sites: **1 - rare occurrence**

13F Herbaceous vegetation of forests clearings and *Rubus* scrub: **1 - rare occurrence**

## Affinity to the forest environment

Affinity to the forest environment in Thermophyticum: **2.1 - taxon occurring both in the forest and open vegetation**

Affinity to the forest environment in Mesophyticum and Oreophyticum: **2.1 - taxon occurring both in the forest and open vegetation**

## Diagnostic taxon

Diagnostic taxon of associations: [ADD03 \*Trollio altissimi-Geranium sylvatici\*](#)

## Constant taxon

Constant taxon of associations: [ADD03 \*Trollio altissimi-Geranium sylvatici\*](#), [ADD04 \*Laserpitio archangelicae-Dactylidetum glomeratae\*](#), [LBA01 \*Alnetum incanae\*](#), [LBA02 \*Piceo abietis-Alnetum glutinosae\*](#), [LFC03 \*Equiseto sylvatici-Piceetum abietis\*](#), [TDB02 \*Melandrio rubri-Phleetum alpini\*](#)

## Dominant taxon

Dominant taxon of associations: [XDF01 \*Rumicetum alpini\*](#)

## Colonization ability

Index of colonization success (ICS): **1**

## Distribution and frequency

Floristic zone: **northern temperate, southern temperate**

Floristic region: **Europe**

Continentality degree: **6**

Distribution range extension along the continentality gradient: **6**

Elevational belt in the Czech Republic: **submontane belt, montane belt, subalpine belt (colline belt)**

Occurrence frequency in the basic grid mapping cells and quadrants of the basic grid mapping cells: 547

taxon.data.freq\_in\_quad: 1525

Number of habitats with taxon occurrence in the Czech Republic

Number of narrow habitats in which the taxon occurs: **45**

Number of narrow habitats in which the taxon has its optimum: **15**

Number of broad habitats in which the taxon occurs: **9**

Number of broad habitats in which the taxon has its optimum: **6**

### **Threats and protection**

Red List 2017 (national categories): **taxon is not on the Red List**

Red List 2017 (IUCN categories): **LC(NA) - least concern (taxon is not on the Red List)**

Legal protection: **not protected by law**