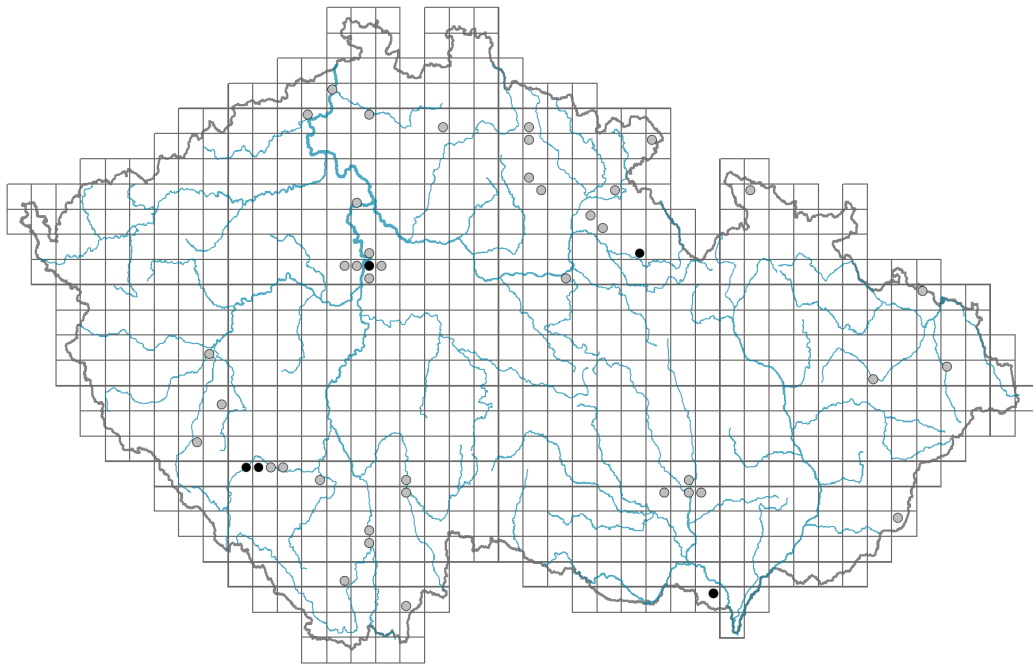


# *Nicandra physalodes*

## Distribution



© Pavel Veselý

### Map info

● revised records

○ unrevised records

On the map are not visualized records without the coordinates and records marked as incorrect or doubtful.



© Dana Michalčová



© Pavel Veselý



© Pavel Veselý



© Dana Michalčová

## Habitus and growth type

Height [m]: **0.3-1**

Growth form: **annual herb**

Life form: **therophyte**

Life strategy: **CR - competitor/ruderal**

Life strategy (Pierce method based on leaf traits): **C/CR**

Life strategy (Pierce method, C-score): **69.5 %**

Life strategy (Pierce method, S-score): **0.2 %**

Life strategy (Pierce method, R-score): **30.3 %**

## Leaf

Leaf presence and metamorphosis: **leaves present, not modified**

Leaf arrangement (phyllotaxis): **alternate**

Leaf shape: **simple - entire**

Stipules: **absent**

Petiole: **present**

Leaf life span: **summer green**

Leaf anatomy: **scleromorphic, mesomorphic**

## Flower

Flowering period [month]: **July-October**

Flower colour: **blue**  
 Flower symmetry: **actinomorphic**  
 Perianth type: **calyx and corolla**  
 Perianth fusion: **fused**  
 Shape of the sympetalous corolla or syntepalous perianth: **campanulate**  
 Calyx fusion: **synsepalous**  
 Inflorescence type: **flores solitarii**  
 Dicliny: **synoecious**  
 Generative reproduction type: **facultative autogamy**  
 Pollination syndrome: **insect-pollination, selfing**

### Fruit, seed and dispersal

Fruit type: **fleshy fruit - berry**  
 Fruit colour: **brown**  
 Reproduction type: **only by seed/spores**  
 Dispersal unit (diaspore): **seed, fruit, infrutescence or its part**  
 Dispersal strategy: **Cornus (mainly autochory and endozoochory)**  
 Myrmecochory: **non-myrmecochorous (b)**

### Belowground organs and clonality

Shoot life span (cyclicality): **monocyclic shoots prevailing**  
 Primary root: **present**  
 Bud bank

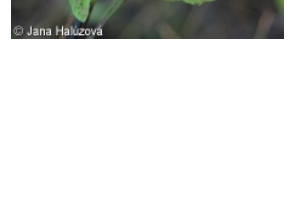
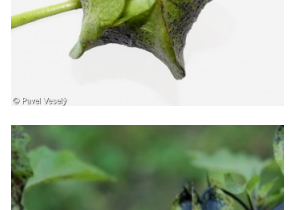
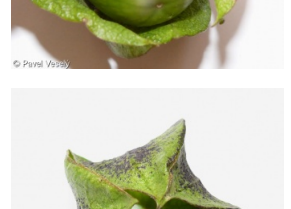
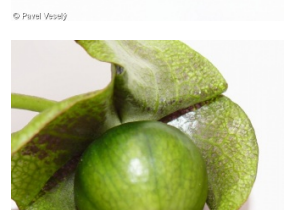
Number of buds per shoot at the soil surface (root buds excluded): **5**  
 Number of buds per shoot at a depth of 0–10 cm (root buds excluded): **0**  
 Number of buds per shoot at a depth greater than 10 cm (root buds excluded): **0**  
 Size of the belowground bud bank (root buds excluded): **5**  
 Depth of the belowground bud bank (root buds excluded) [cm]: **1**  
 Number of buds per shoot at the soil surface (root buds included): **5**  
 Number of buds per shoot at a depth of 0–10 cm (root buds included): **0**  
 Number of buds per shoot at a depth greater than 10 cm (root buds included): **0**  
 Size of the belowground bud bank (root buds included): **5**  
 Depth of the belowground bud bank (root buds included) [cm]: **1**

### Trophic mode

Parasitism and mycoheterotrophy: **autotrophic**  
 Carnivory: **non-carnivorous**  
 Symbiotic nitrogen fixation: **no nitrogen-fixing symbionts**

### Taxon origin

Origin in the Czech Republic: **neophyte**  
 Invasion status: **casual**  
 Geographic origin: **South America**  
 Year of the first record in the wild: **1853**  
 Period of introduction: **Recent Past (1950-2000)**



Introduction pathway: **intentional - ornamental**

## Habitat and sociology

Occurrence in habitats

13 Anthropogenic vegetation

13A Annual vegetation of ruderal habitats: **2 - optimum**

13D Perennial thermophilous ruderal vegetation: **1 - rare occurrence**

Affinity to the forest environment

Affinity to the forest environment in Thermophyticum: **0 - taxon that does not spontaneously occur in Czech forests**

Affinity to the forest environment in Mesophyticum and Oreophyticum: **0 - taxon that does not spontaneously occur in Czech forests**

## Distribution and frequency

Floristic zone: **tropical**

Floristic region: **Western America**

Occurrence frequency in the basic grid mapping cells and quadrants of the basic grid mapping cells: 42

taxon.data.freq\_in\_quad: 45

Number of habitats with taxon occurrence in the Czech Republic

Number of narrow habitats in which the taxon occurs: **2**

Number of narrow habitats in which the taxon has its optimum: **1**

Number of broad habitats in which the taxon occurs: **1**

Number of broad habitats in which the taxon has its optimum: **1**

## Threats and protection

Red List 2017 (national categories): **taxon is not on the Red List**

Red List 2017 (IUCN categories): **LC(NA) - least concern (taxon is not on the Red List)**

Legal protection: **not protected by law**



© Pavel Veselý



© Pavel Veselý



© Martina Sojneková



© Dana Michalčová

