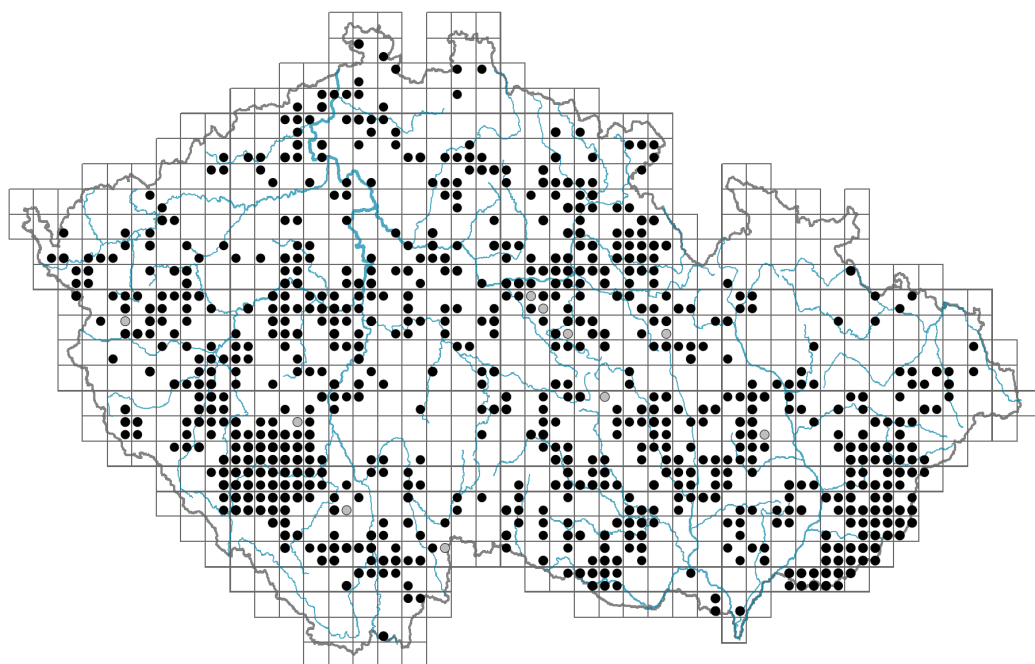


# Anacamptis morio

## Distribution



### Map info

● revised records

○ unrevised records

On the map are not visualized records without the coordinates and records marked as incorrect or doubtful.

## Habitus and growth type

Height [m]: **0.07-0.35**

Growth form: **clonal herb**

Life form: **geophyte**

Life strategy: **CSR - competitor/stress-tolerator/ruderal**

Life strategy (Pierce method based on leaf traits): **R/CR**

Life strategy (Pierce method, C-score): **25.8 %**

Life strategy (Pierce method, S-score): **0 %**

Life strategy (Pierce method, R-score): **74.2 %**

## Leaf

Leaf presence and metamorphosis: **leaves present, not modified**

Leaf arrangement (phyllotaxis): **alternate**

Leaf shape: **simple - entire**

Stipules: **absent**

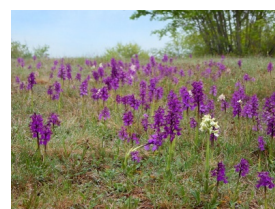
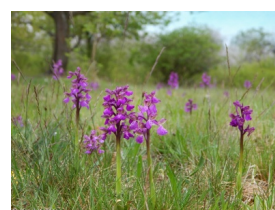
Petiole: **absent**

Leaf life span: **overwintering green**

Leaf anatomy: **mesomorphic, hygromorphic**

## Flower

Flowering period [month]: **May**



Flowering phase: **3 Prunus avium-Ranunculus auricomus (end of early spring)**

Flower colour: **white, pink, red-violet**

Flower symmetry: **zygomorphic**

Perianth type: **homochlamydeous**

Perianth fusion: **free**

Inflorescence type: **spica**

Dicliny: **synoecious**

Generative reproduction type: **facultative allogamy**

Pollination syndrome: **insect-pollination**

## Fruit, seed and dispersal

Fruit type: **dry fruit - capsule**

Fruit colour: **green, brown**

Reproduction type: **only by seed/spores**

Dispersal unit (diaspore): **seed**

Dispersal strategy: **Lycopodium (mainly anemochory)**

Myrmecochory: **non-myrmecochorous (b)**

## Belowground organs and clonality

Root metamorphosis: **root tuber**

Storage organ: **root tuber**

Type of clonal growth organ: **root tuber**

Freely dispersible organs of clonal growth: **absent**

Shoot life span (cyclicality): **monocyclic shoots prevailing**

Branching type of stem-derived organs of clonal growth: **sympodial**

Primary root: **absent**

Persistence of the clonal growth organ [year]: **1**

Number of clonal offspring: **1.8**

Lateral spreading distance by clonal growth [m]: **0.01**

Clonal index: **3**

### Bud bank

Number of buds per shoot at the soil surface (root buds excluded): **5**

Number of buds per shoot at a depth of 0-10 cm (root buds excluded): **5**

Number of buds per shoot at a depth greater than 10 cm (root buds excluded): **0**

Size of the belowground bud bank (root buds excluded): **10**

Depth of the belowground bud bank (root buds excluded) [cm]: **3**

Number of buds per shoot at the soil surface (root buds included): **5**

Number of buds per shoot at a depth of 0-10 cm (root buds included): **5**

Number of buds per shoot at a depth greater than 10 cm (root buds included): **0**

Size of the belowground bud bank (root buds included): **10**

Depth of the belowground bud bank (root buds included) [cm]: **3**

## Trophic mode

Parasitism and mycoheterotrophy: **partial or initial mycoheterotroph**

Carnivory: **non-carnivorous**

Symbiotic nitrogen fixation: **no nitrogen-fixing symbionts**



## Karyology

Chromosome number (2n): **36**

Ploidy level (x): **2**

2C genome size [Mbp]: **11134.98**

1Cx monoploid genome size [Mbp]: **5567.49**

Genomic GC content: **45.8 %**

## Taxon origin

Origin in the Czech Republic: **native**

## Ecological indicator values

Ellenberg-type indicator values

Light indicator value: **8 - light plant, only exceptionally occurring at less than 40% of diffuse radiation incident in an open area**

Temperature indicator value: **5 - moderate heat indicator, occurring from lowland to montane belt, mainly in submontane-temperate areas**

Moisture indicator value: **4 - transition between values 3 and 5**

Reaction indicator value: **6 - transition between values 5 and 7**

Nutrient indicator value: **3 - occurring at nutrient-poor sites more frequently than at average sites and exceptionally at rich sites**

Salinity indicator value: **0 - not salt tolerant, glycophyte**

## Habitat and sociology

Occurrence in habitats

6 Meadows and mesic pastures

6A Mesic Arrhenatherum meadows: **2 - optimum**

6C Pastures and park grasslands: **2 - optimum**

7 Acidophilous grasslands

7B Submontane Nardus grasslands: **1 - rare occurrence**

8 Dry grasslands

8D Broad-leaved dry grasslands: **2 - optimum**

8E Acidophilous dry grasslands: **2 - optimum**

Affinity to the forest environment

Affinity to the forest environment in Thermophyticum: **0 - taxon that does not spontaneously occur in Czech forests**

Affinity to the forest environment in Mesophyticum and Oreophyticum: **0 - taxon that does not spontaneously occur in Czech forests**

Ecological specialization indices

Ecological specialization index for all vegetation types: **5.8**

Ecological specialization index for non-forest vegetation: **5.9**

Colonization ability

Index of colonization success (ICS): **2**

Index of colonization potential (ICP): **7**

Optimum successional age [years]: **35**



## Distribution and frequency

Floristic zone: **northern temperate, southern temperate, submeridional, meridional**

Floristic region: **Europe**

Continentality degree: **4**

Distribution range extension along the continentality gradient: **4**

Elevational belt in the Czech Republic: **lowlands, colline belt, submontane belt**

Occurrence frequency in the basic grid mapping cells and quadrants of the basic grid mapping cells: 415

taxon.data.freq\_in\_quad: 810

Commonness in vegetation plots from the Czech Republic

Occurrence frequency in vegetation plots: **0.1 %**

Occurrence frequency in vegetation plots with a cover above 5%: **0 %**

Occurrence frequency in vegetation plots with a cover above 25%: **0 %**

Occurrence frequency in vegetation plots with a cover above 50%: **0 %**

Mean percentage cover in vegetation plots: **1.7 %**

Maximum percentage cover in vegetation plots: **3 %**

Number of habitats with taxon occurrence in the Czech Republic

Number of narrow habitats in which the taxon occurs: **5**

Number of narrow habitats in which the taxon has its optimum: **4**

Number of broad habitats in which the taxon occurs: **3**

Number of broad habitats in which the taxon has its optimum: **2**

## Threats and protection

Red List 2017 (national categories): **C1b - critically threatened taxon, rare and declining**

Red List 2017 (IUCN categories): **CR - critically endangered**

Legal protection: **endangered taxon**