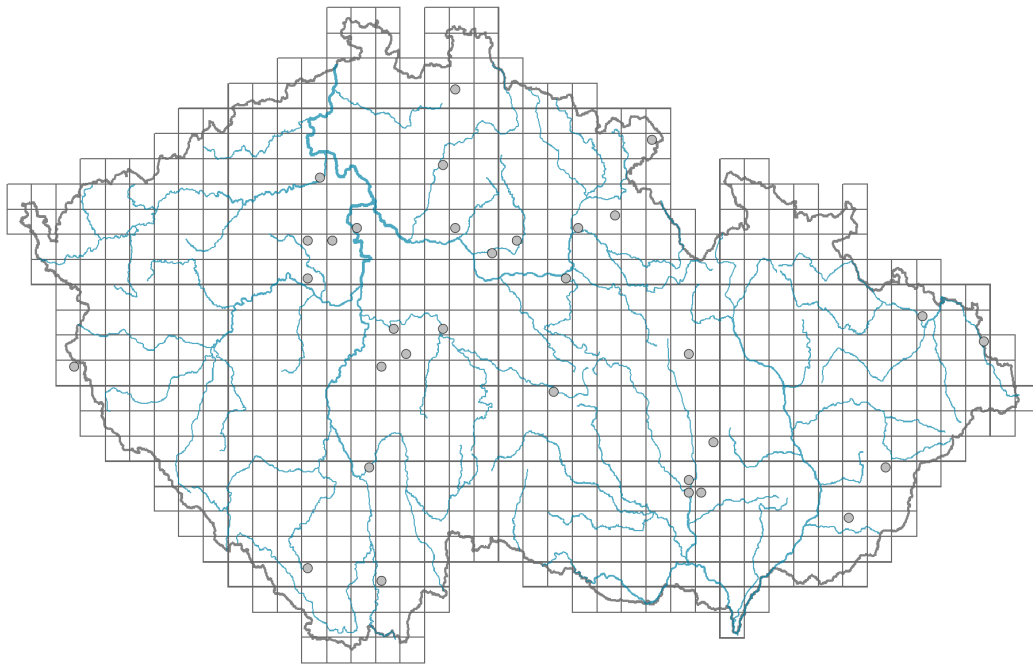


Paeonia officinalis

Distribution



Map info

● revised records

● unrevised records

On the map are not visualized records without the coordinates and records marked as incorrect or doubtful.



Habitus and growth type

Height [m]: **0.4-0.8**

Life form: **geophyte**

Life strategy: **C - competitor**

Life strategy (Pierce method based on leaf traits): **C/CS**

Life strategy (Pierce method, C-score): **67.8 %**

Life strategy (Pierce method, S-score): **27.3 %**

Life strategy (Pierce method, R-score): **4.9 %**



Leaf

Leaf presence and metamorphosis: **leaves present, not modified**

Leaf arrangement (phyllotaxis): **alternate**

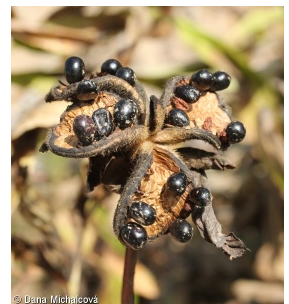
Leaf shape: **compound - bipinnate, compound - tripinnate**

Stipules: **absent**

Petiole: **present**

Leaf life span: **summer green**

Leaf anatomy: **mesomorphic**



Flower

Flowering period [month]: **May-June**

Flower colour: **white, pink, red-violet**

Flower symmetry: **actinomorphic**
Perianth type: **calyx and corolla**
Perianth fusion: **free**
Calyx fusion: **aposepalous**
Inflorescence type: **flores solitarii**
Dicliny: **synoecious**
Generative reproduction type: **allogamy self-incompatibility**
Pollination syndrome: **insect-pollination**



Fruit, seed and dispersal

Fruit type: **dry fruit - cluster of follicles**
Fruit colour: **brown**
Reproduction type: **only by seed/spores**
Dispersal strategy: **Zea (no dispersal)**
Myrmecochory: **non-myrmecochorous (b)**

Belowground organs and clonality

Shoot metamorphosis: **pleiocorm**
Root metamorphosis: **primary storage root**
Storage organ: **pleiocorm, primary storage root**

Trophic mode

Parasitism and mycoheterotrophy: **autotrophic**
Carnivory: **non-carnivorous**
Symbiotic nitrogen fixation: **no nitrogen-fixing symbionts**

Taxon origin

Origin in the Czech Republic: **archaeophyte/neophyte**
Invasion status: **casual**
Geographic origin: **Mediterranean**
Period of introduction: **Late Middle Ages and Early Modern Period (merged category, 1200-1800)**
Introduction pathway: **intentional - ornamental**

Habitat and sociology

Affinity to the forest environment
Affinity to the forest environment in Thermophyticum: **0 - taxon that does not spontaneously occur in Czech forests**
Affinity to the forest environment in Mesophyticum and Oreophyticum: **0 - taxon that does not spontaneously occur in Czech forests**

Distribution and frequency

Floristic zone: **submeridional**
Floristic region: **Europe**

Occurrence frequency in the basic grid mapping cells and quadrants of the basic grid

mapping cells: 33

taxon.data.freq_in_quad: 33

Threats and protection

Red List 2017 (national categories): **taxon is not on the Red List**

Red List 2017 (IUCN categories): **LC(NA) - least concern (taxon is not on the Red List)**

Legal protection: **not protected by law**