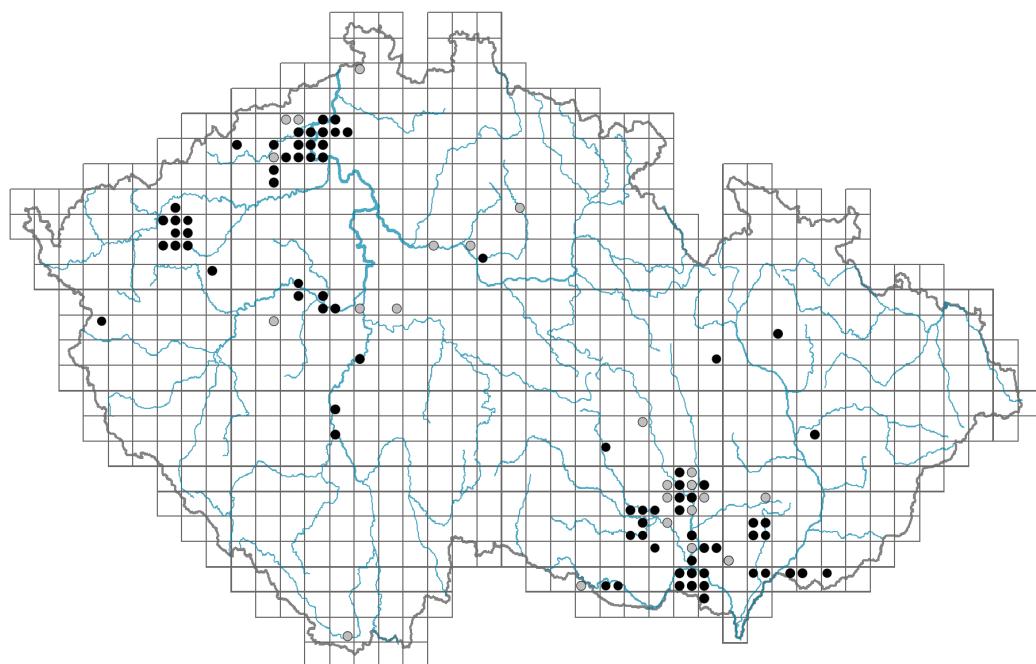


# *Phelipanche purpurea* s. l.

## Distribution



### Map info

● revised records

● unrevised records

On the map are not visualized records without the coordinates and records marked as incorrect or doubtful.



## Habitus and growth type

Height [m]: **0.15-0.5**

Growth form: **clonal herb**

Life form: **geophyte**

## Leaf

Leaf presence and metamorphosis: **leaves reduced to scales**

Leaf shape: **simple - entire**

Stipules: **absent**

Leaf anatomy: **mesomorphic**

## Flower

Flowering period [month]: **June-August**

Flower colour: **blue, blue-violet**

Flower symmetry: **zygomorphic**

Perianth type: **calyx and corolla**

Perianth fusion: **fused**

Shape of the sympetalous corolla or syntepalous perianth: **bilabiate**

Calyx fusion: **synsepalous**

Inflorescence type: **spica**

Dicliny: **synoecious**

Generative reproduction type: **facultative autogamy**

Pollination syndrome: **insect-pollination, selfing**

## Fruit, seed and dispersal

Fruit type: **dry fruit - capsule**

Fruit colour: **brown**

Reproduction type: **only by seed/spores**

Dispersal unit (diaspore): **seed**

Dispersal strategy: **Lycopodium (mainly anemochory)**

Myrmecochory: **non-myrmecochorous (b)**

## Belowground organs and clonality

Shoot metamorphosis: **shoot tuber**

Storage organ: **shoot tuber**

Type of clonal growth organ: **root with adventitious buds**

Freely dispersible organs of clonal growth: **absent**

Shoot life span (cyclicality): **monocyclic shoots prevailing**

Branching type of stem-derived organs of clonal growth: **sympodial**

Primary root: **absent**

Persistence of the clonal growth organ [year]:

Position of root buds: **hypocotyl**

Role of root buds in life-history of a plant: **necessary**

## Bud bank

Number of buds per shoot at the soil surface (root buds excluded):

Number of buds per shoot at a depth of 0–10 cm (root buds excluded):

Number of buds per shoot at a depth greater than 10 cm (root buds excluded): **3**

Size of the belowground bud bank (root buds excluded): **13**

Depth of the belowground bud bank (root buds excluded) [cm]: **5**

Number of buds per shoot at the soil surface (root buds included):

Number of buds per shoot at a depth of 0–10 cm (root buds included):

Number of buds per shoot at a depth greater than 10 cm (root buds included):

Size of the belowground bud bank (root buds included):

Depth of the belowground bud bank (root buds included) [cm]:

## Trophic mode

Parasitism and mycoheterotrophy: **root holoparasite**

Carnivory: **non-carnivorous**

Symbiotic nitrogen fixation: **no nitrogen-fixing symbionts**

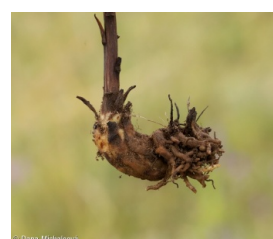
## Karyology

Chromosome number (2n): **24**

Ploidy level (x): **2**

2C genome size [Mbp]: **12257.44**

1Cx monoploid genome size [Mbp]: **6128.72**



## Taxon origin

Origin in the Czech Republic: **native**

## Ecological indicator values

Ellenberg-type indicator values

Light indicator value: **9 - full light plant, occurring only in fully irradiated places, not at less than 50% of diffuse radiation incident in an open area**

Temperature indicator value: **7 - heat indicator, occurring in relatively warm lowlands**

Moisture indicator value: **2 - transition between values 1 and 3**

Reaction indicator value: **8 - transition between values 7 and 9, occurring mostly in calcium-rich conditions**

Nutrient indicator value: **2 - transition between values 1 and 3**

Salinity indicator value: **0 - not salt tolerant, glycophyte**

## Habitat and sociology

Occurrence in habitats

6 Meadows and mesic pastures

6A Mesic Arrhenatherum meadows: **1 - rare occurrence**

6C Pastures and park grasslands: **1 - rare occurrence**

8 Dry grasslands

8A Hercynian dry grasslands on rock outcrops: **2 - optimum**

8B Submediterranean dry grasslands on rock outcrops: **1 - rare occurrence**

8C Narrow-leaved sub-continental steppes: **2 - optimum**

8D Broad-leaved dry grasslands: **2 - optimum**

8E Acidophilous dry grasslands: **2 - optimum**

8F Thermophilous forest fringe vegetation: **2 - optimum**

11 Heathlands and scrub

11L Tall mesic and xeric shrub: **1 - rare occurrence**

11N Low xeric scrub: **1 - rare occurrence**

12 Forests

12H Peri-Alpidic basiphilous thermophilous oak forests: **1 - rare occurrence**

12I Sub-continental thermophilous oak forests: **1 - rare occurrence**

12J Acidophilous thermophilous oak forests: **1 - rare occurrence**

Affinity to the forest environment

Affinity to the forest environment in Thermophyticum: **0 - taxon that does not spontaneously occur in Czech forests**

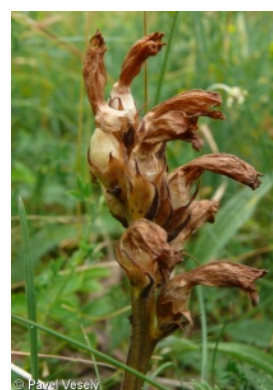
Affinity to the forest environment in Mesophyticum and Oreophyticum: **0 - taxon that does not spontaneously occur in Czech forests**

Colonization ability

Index of colonization success (ICS): **1**

## Distribution and frequency

Floristic zone: **southern temperate, submeridional, meridional**



Floristic region: **Europe**

Continentality degree: **6**

Distribution range extension along the continentality gradient: **6**

Elevational belt in the Czech Republic: **colline belt**

Occurrence frequency in the basic grid mapping cells and quadrants of the basic grid mapping cells: **61**

taxon.data.freq\_in\_quad: 100

Number of habitats with taxon occurrence in the Czech Republic

Number of narrow habitats in which the taxon occurs: **13**

Number of narrow habitats in which the taxon has its optimum: **5**

Number of broad habitats in which the taxon occurs: **4**

Number of broad habitats in which the taxon has its optimum: **1**

## Threats and protection

Red List 2017 (national categories): **C1r - critically threatened taxon, rare**

Red List 2017 (IUCN categories): **EN - endangered**

Legal protection: **not protected by law**

