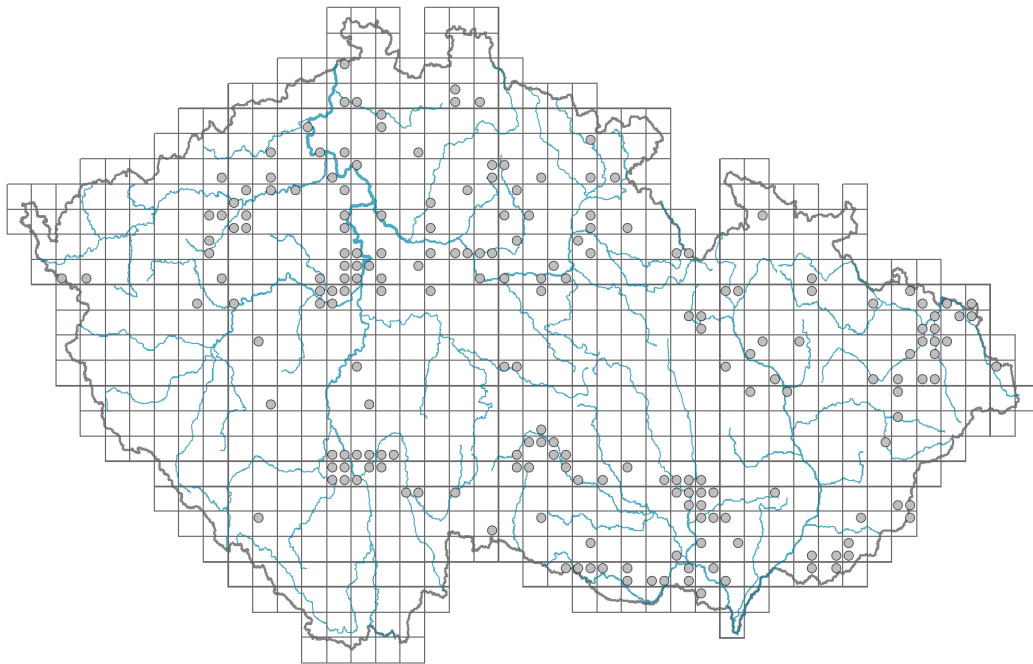


Polygonum rurivagum

Distribution

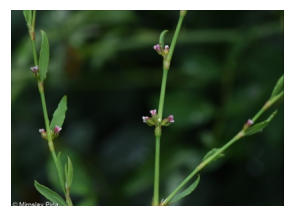


Map info

● revised records

● unrevised records

On the map are not visualized records without the coordinates and records marked as incorrect or doubtful.



Habitus and growth type

Height [m]: **0.05-0.5**

Growth form: **annual herb**

Life form: **therophyte**

Leaf

Leaf presence and metamorphosis: **leaves present, not modified**

Leaf arrangement (phyllotaxis): **alternate**

Leaf shape: **simple - entire**

Stipules: **present**

Petiole: **present**

Flower

Flowering period [month]: **June-September**

Flower colour: **green-white, pink**

Flower symmetry: **actinomorphic**

Perianth type: **homochlamydeous**

Perianth fusion: **fused**

Shape of the sympetalous corolla or syntepalous perianth: **tubular**

Inflorescence type: **fasciculus**

Fruit, seed and dispersal

Fruit type: **dry fruit - achene/cypsela/samara**

Fruit colour: **brown**

Dispersal unit (diaspore): **fruit, infrutescence or its part**

Dispersal strategy: **Allium (mainly autochory)**

Myrmecochory: **probably non-myrmecochorous nv**

Trophic mode

Parasitism and mycoheterotrophy: **autotrophic**

Carnivory: **non-carnivorous**

Symbiotic nitrogen fixation: **no nitrogen-fixing symbionts**

Karyology

Chromosome number (2n): **60**

Ploidy level (x): **6**

2C genome size [Mbp]: **2197.31**

1Cx monoploid genome size [Mbp]: **366.22**

Genomic GC content: **41.3 %**

Taxon origin

Origin in the Czech Republic: **native**

Ecological indicator values

Ellenberg-type indicator values

Light indicator value: **7 - half-light plant, mostly occurring at full light, but also in the shade up to about 30% of diffuse radiation incident in an open area**

Temperature indicator value: **6 - transition between values 5 and 7**

Moisture indicator value: **4 - transition between values 3 and 5**

Reaction indicator value: **6x - transition between values 5 and 7 (generalist)**

Nutrient indicator value: **7 - occurring at nutrient-rich sites more often than at average sites and only exceptionally at poor sites**

Salinity indicator value: **1 - salt tolerant, mostly on low-salt to salt-free soils, but occasionally on slightly salty soils**

Habitat and sociology

Occurrence in habitats

1 Vegetation of cliffs, screes and walls

1C Walls: **1 - rare occurrence**

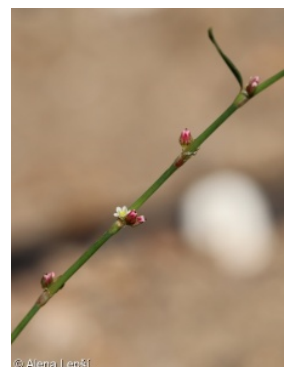
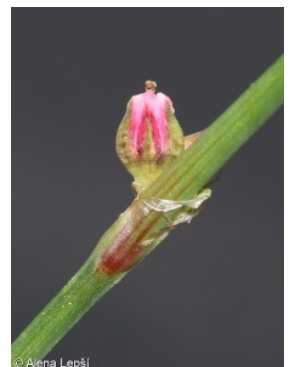
3 Aquatic vegetation

3C Macrophytic vegetation of oligotrophic lakes and pools: **1 - rare occurrence**

4 Wetland and riverine herbaceous vegetation

4D Riverine reed vegetation: **1 - rare occurrence**

4H Vegetation of low annual hygrophilous herbs: **1 - rare occurrence**



4I Vegetation of nitrophilous annual hygrophilous herbs: **1 - rare occurrence**
 4J River gravel banks: **1 - rare occurrence**
 6 Meadows and mesic pastures
 6C Pastures and park grasslands: **2 - optimum**
 6G Vegetation of wet disturbed soils: **1 - rare occurrence**
 8 Dry grasslands
 8C Narrow-leaved sub-continental steppes: **1 - rare occurrence**
 8E Acidophilous dry grasslands: **1 - rare occurrence**
 9 Sand grasslands and rock-outcrop vegetation
 9B Open vegetation of acidic sands: **1 - rare occurrence**
 9C Festuca grasslands on acidic sands: **1 - rare occurrence**
 9D Pannonian sand steppes: **1 - rare occurrence**
 9E Acidophilous vegetation of spring therophytes and succulents: **1 - rare occurrence**
 9F Basiphilous vegetation of spring therophytes and succulents: **1 - rare occurrence**
 11 Heathlands and scrub
 11R Scrub and pioneer woodland of forests clearings: **1 - rare occurrence**
 12 Forests
 12T Robinia pseudacacia plantations: **1 - rare occurrence**
 12W Pine and larch plantations: **1 - rare occurrence**
 13 Anthropogenic vegetation
 13A Annual vegetation of ruderal habitats: **2 - optimum**
 13B Annual vegetation of arable land: **2 - optimum**
 13C Annual vegetation of trampled habitats: **1 - rare occurrence**
 13D Perennial thermophilous ruderal vegetation: **2 - optimum**
 13E Perennial nitrophilous herbaceous vegetation of mesic sites: **1 - rare occurrence**
 13F Herbaceous vegetation of forests clearings and Rubus scrub: **1 - rare occurrence**
 Affinity to the forest environment
 Affinity to the forest environment in Thermophyticum: **0 - taxon that does not spontaneously occur in Czech forests**
 Affinity to the forest environment in Mesophyticum and Oreophyticum: **0 - taxon that does not spontaneously occur in Czech forests**



Distribution and frequency

Elevational belt in the Czech Republic: **lowlands, colline belt, submontane belt**
 Occurrence frequency in the basic grid mapping cells and quadrants of the basic grid mapping cells: 151
 taxon.data.freq_in_quad: 204
 Number of habitats with taxon occurrence in the Czech Republic
 Number of narrow habitats in which the taxon occurs: **24**
 Number of narrow habitats in which the taxon has its optimum: **4**
 Number of broad habitats in which the taxon occurs: **9**
 Number of broad habitats in which the taxon has its optimum: **2**

Threats and protection

Red List 2017 (national categories): **taxon is not on the Red List**

Red List 2017 (IUCN categories): **LC(NA) - least concern (taxon is not on the Red List)**

Legal protection: **not protected by law**