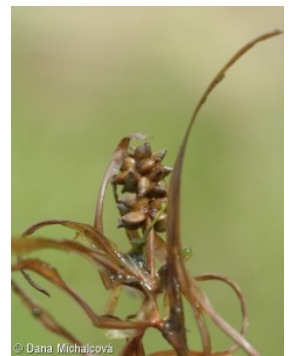
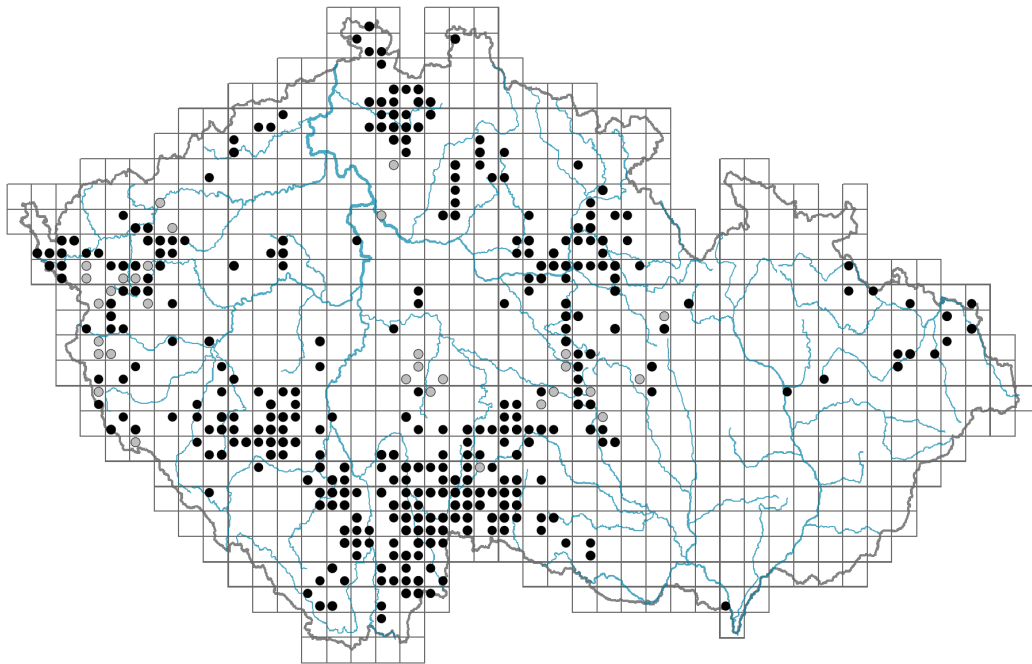


Potamogeton obtusifolius

Distribution



© Dana Michalčová

Map info

● revised records

○ unrevised records

On the map are not visualized records without the coordinates and records marked as incorrect or doubtful.



© Dana Michalčová



© Jan Lišaný / FloraPortal.cz

Habitus and growth type

Height [m]: **0.1-1.2**

Growth form: **clonal herb**

Life form: **hydrophyte**

Life strategy (Pierce method based on leaf traits): **R/SR**

Life strategy (Pierce method, C-score): **6.1 %**

Life strategy (Pierce method, S-score): **30.1 %**

Life strategy (Pierce method, R-score): **63.9 %**

Leaf

Leaf presence and metamorphosis: **leaves present, not modified**

Leaf arrangement (phyllotaxis): **alternate**

Leaf shape: **simple - entire**

Stipules: **present**

Petiole: **absent**

Leaf life span: **summer green**

Leaf anatomy: **hydromorphic**

Flower

Flowering period [month]: **June-August**

Flower colour: **green**

Flower symmetry: **actinomorphic**
Perianth type: **homochlamydeous**
Perianth fusion: **free**
Inflorescence type: **spica**
Dicliny: **synoecious**
Generative reproduction type: **facultative autogamy**
Pollination syndrome: **wind-pollination, selfing**

Fruit, seed and dispersal

Fruit type: **dry fruit - achene/cypsela/samara**
Fruit colour: **green, brown, black**
Reproduction type: **by seed/spores and vegetatively**
Dispersal unit (diaspore): **fruit, infrutescence or its part, turion, shoot fragment**
Dispersal strategy: **Wolffia (mainly hydrochory)**
Myrmecochory: **non-myrmecochorous (b)**

Belowground organs and clonality

Shoot metamorphosis: **turion**
Storage organ: **turion**
Type of clonal growth organ: **turion**
Freely dispersible organs of clonal growth: **present**
Shoot life span (cyclicality): **monocyclic shoots prevailing**
Branching type of stem-derived organs of clonal growth: **sympodial**
Primary root: **absent**
Persistence of the clonal growth organ [year]: **1**
Number of clonal offspring: **4.3**
Lateral spreading distance by clonal growth [m]: **0.13**
Clonal index: **7**

Bud bank

Number of buds per shoot at the soil surface (root buds excluded): **9**
Number of buds per shoot at a depth of 0–10 cm (root buds excluded): **7**
Number of buds per shoot at a depth greater than 10 cm (root buds excluded): **0**
Size of the belowground bud bank (root buds excluded): **16**
Depth of the belowground bud bank (root buds excluded) [cm]: **3**
Number of buds per shoot at the soil surface (root buds included): **9**
Number of buds per shoot at a depth of 0–10 cm (root buds included): **7**
Number of buds per shoot at a depth greater than 10 cm (root buds included): **0**
Size of the belowground bud bank (root buds included): **16**
Depth of the belowground bud bank (root buds included) [cm]: **3**

Trophic mode

Parasitism and mycoheterotrophy: **autotrophic**
Carnivory: **non-carnivorous**
Symbiotic nitrogen fixation: **no nitrogen-fixing symbionts**

Karyology

Chromosome number (2n): **26**

Ploidy level (x): **2**

2C genome size [Mbp]: **759.66**

1Cx monoploid genome size [Mbp]: **379.83**

Genomic GC content: **40.7 %**

Taxon origin

Origin in the Czech Republic: **native**

Ecological indicator values

Ellenberg-type indicator values

Light indicator value: **6 - transition between values 5 and 7; rarely at less than 20% of diffuse radiation incident in an open area**

Temperature indicator value: **6 - transition between values 5 and 7**

Moisture indicator value: **12 - permanently or almost permanently submerged aquatic plant**

Reaction indicator value: **6 - transition between values 5 and 7**

Nutrient indicator value: **6 - transition between values 5 and 7**

Salinity indicator value: **0 - not salt tolerant, glycophyte**

Indicator values for disturbance

Whole-community disturbance frequency indicator value: **-0.46**

Herb layer disturbance frequency indicator value: **-0.46**

Whole-community disturbance severity indicator value: **0.14**

Herb layer disturbance severity indicator value: **0.18**

Whole-community structure based disturbance indicator value: **0.53**

Herb layer structure-based disturbance indicator value: **0.53**

Habitat and sociology

Occurrence in habitats

3 Aquatic vegetation

3A Macrophytic vegetation of eutrophic and mesotrophic still waters: **2 - optimum**

3C Macrophytic vegetation of oligotrophic lakes and pools: **2 - optimum**

4 Wetland and riverine herbaceous vegetation

4A Reed-beds of eutrophic still waters: **1 - rare occurrence**

4C Eutrophic vegetation of muddy substrata: **1 - rare occurrence**

4H Vegetation of low annual hygrophilous herbs: **1 - rare occurrence**

Affinity to the forest environment

Affinity to the forest environment in Thermophyticum: **0 - taxon that does not spontaneously occur in Czech forests**

Affinity to the forest environment in Mesophyticum and Oreophyticum: **0 - taxon that does not spontaneously occur in Czech forests**

Diagnostic taxon

Diagnostic taxon of alliances: [VCA Nitellion flexilis](#)

Diagnostic taxon of associations: [VBB19 Potametum crispo-obtusifolii](#), [VBB22 Potametum acutifolii](#), [VCA01 Nitelletum flexilis](#)

Constant taxon

Constant taxon of associations: [VBB19 Potametum crispo-obtusifolii](#)

Dominant taxon

Dominant taxon of associations: [VBB19 Potametum crispo-obtusifolii](#)

Ecological specialization indices

Ecological specialization index for all vegetation types: **5**

Ecological specialization index for non-forest vegetation: **4.9**

Distribution and frequency

Floristic zone: **boreal, northern temperate, southern temperate**

Floristic region: **circumpolar**

Distribution range extension along the continentality gradient: **8**

Elevational belt in the Czech Republic: **lowlands, colline belt, submontane belt**

Occurrence frequency in the basic grid mapping cells and quadrants of the basic grid mapping cells: **226**

taxon.data.freq_in_quad: **401**

Commonness in vegetation plots from the Czech Republic

Occurrence frequency in vegetation plots: **0.3 %**

Occurrence frequency in vegetation plots with a cover above 5%: **51.7 %**

Occurrence frequency in vegetation plots with a cover above 25%: **31.5 %**

Occurrence frequency in vegetation plots with a cover above 50%: **28.1 %**

Mean percentage cover in vegetation plots: **26.7 %**

Maximum percentage cover in vegetation plots: **88 %**

Number of habitats with taxon occurrence in the Czech Republic

Number of narrow habitats in which the taxon occurs: **5**

Number of narrow habitats in which the taxon has its optimum: **2**

Number of broad habitats in which the taxon occurs: **2**

Number of broad habitats in which the taxon has its optimum: **1**

Threats and protection

Red List 2017 (national categories): **C3 - vulnerable taxon**

Red List 2017 (IUCN categories): **NT - near threatened**

Legal protection: **not protected by law**