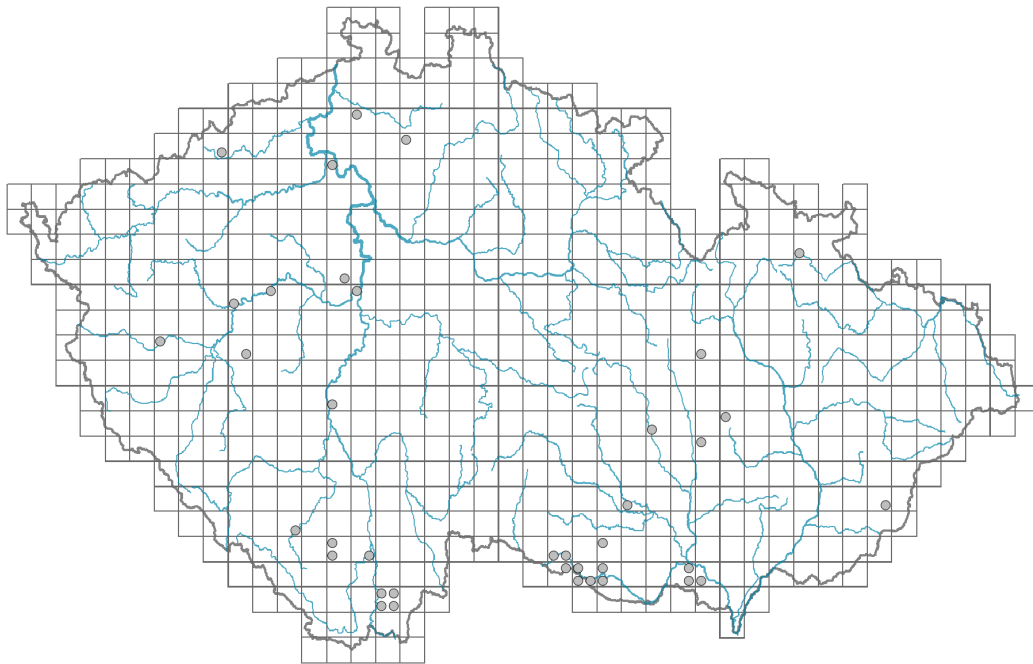


# Arabis turrita

## Distribution



### Map info

● revised records

● unrevised records

On the map are not visualized records without the coordinates and records marked as incorrect or doubtful.

## Habitus and growth type

Height [m]: **0.3-0.8**

Growth form: **polycarpic perennial non-clonal herb**

Life form: **hemicryptophyte**

Life strategy (Pierce method based on leaf traits): **CR**

Life strategy (Pierce method, C-score): **47 %**

Life strategy (Pierce method, S-score): **0 %**

Life strategy (Pierce method, R-score): **53 %**



## Leaf

Leaf presence and metamorphosis: **leaves present, not modified**

Leaf arrangement (phyllotaxis): **alternate, rosulate**

Leaf shape: **simple - entire**

Stipules: **absent**

Petiole: **both present and absent**

## Flower

Flowering period [month]: **April-May**

Flower colour: **white, yellow-white**

Flower symmetry: **actinomorphic**

Perianth type: **calyx and corolla**



Perianth fusion: **free**  
 Calyx fusion: **aposepalous**  
 Inflorescence type: **racemus**  
 Generative reproduction type: **mixed mating**

## Fruit, seed and dispersal

Fruit type: **dry fruit - siliqua**  
 Fruit colour: **brown**  
 Dispersal unit (diaspore): **seed**  
 Dispersal strategy: **Allium (mainly autochory)**  
 Myrmecochory: **non-myrmecochorous (b)**

## Belowground organs and clonality

Shoot life span (cyclicity): **dicyclic or polycyclic shoots prevailing**  
 Branching type of stem-derived organs of clonal growth: **sympodial**  
 Primary root: **present**  
 Position of root buds: **lateral roots**  
 Role of root buds in life-history of a plant: **additive**

### Bud bank

Number of buds per shoot at the soil surface (root buds excluded): **5**  
 Number of buds per shoot at a depth of 0–10 cm (root buds excluded): **3**  
 Number of buds per shoot at a depth greater than 10 cm (root buds excluded): **0**  
 Size of the belowground bud bank (root buds excluded): **8**  
 Depth of the belowground bud bank (root buds excluded) [cm]: **2**  
 Number of buds per shoot at the soil surface (root buds included): **5**  
 Number of buds per shoot at a depth of 0–10 cm (root buds included): **10**  
 Number of buds per shoot at a depth greater than 10 cm (root buds included): **15**  
 Size of the belowground bud bank (root buds included): **30**  
 Depth of the belowground bud bank (root buds included) [cm]: **9**

## Trophic mode

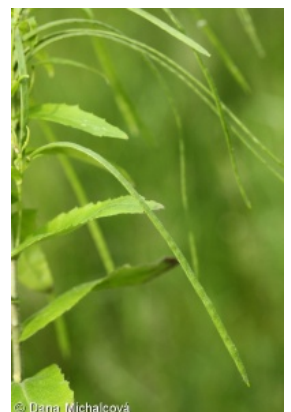
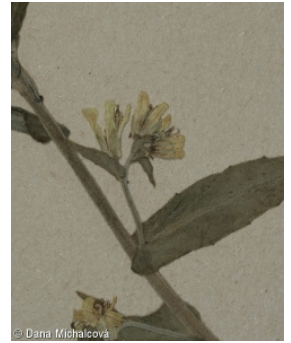
Parasitism and mycoheterotrophy: **autotrophic**  
 Carnivory: **non-carnivorous**  
 Symbiotic nitrogen fixation: **no nitrogen-fixing symbionts**

## Karyology

Chromosome number (2n): **16**  
 Ploidy level (x): **2**  
 2C genome size [Mbp]: **755.38**  
 1Cx monoploid genome size [Mbp]: **377.69**  
 Genomic GC content: **40.6 %**

## Taxon origin

Origin in the Czech Republic: **native**



## Ecological indicator values

### Ellenberg-type indicator values

Light indicator value: **6 - transition between values 5 and 7; rarely at less than 20% of diffuse radiation incident in an open area**

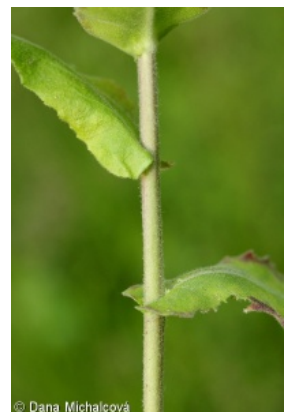
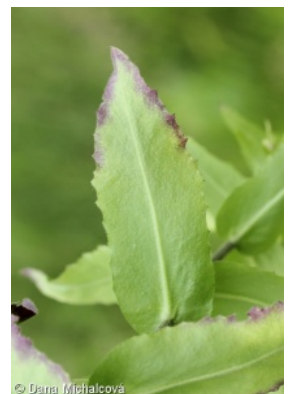
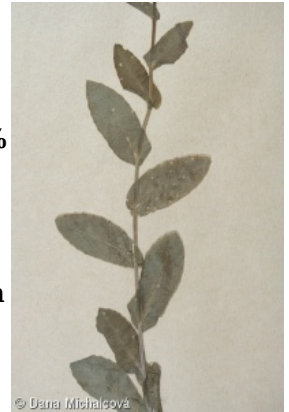
Temperature indicator value: **6 - transition between values 5 and 7**

Moisture indicator value: **4 - transition between values 3 and 5**

Reaction indicator value: **8 - transition between values 7 and 9, occurring mostly in calcium-rich conditions**

Nutrient indicator value: **6 - transition between values 5 and 7**

Salinity indicator value: **0 - not salt tolerant, glycophyte**



## Habitat and sociology

### Occurrence in habitats

1 Vegetation of cliffs, screes and walls

1A Calcareous cliffs: **1 - rare occurrence**

1D Mobile calcareous screes: **1 - rare occurrence**

8 Dry grasslands

8F Thermophilous forest fringe vegetation: **1 - rare occurrence**

11 Heathlands and scrub

11L Tall mesic and xeric shrub: **1 - rare occurrence**

12 Forests

12C Oak-hornbeam forests: **1 - rare occurrence**

12D Ravine forests: **2 - optimum**

12H Peri-Alpidic basiphilous thermophilous oak forests: **1 - rare occurrence**

12J Acidophilous thermophilous oak forests: **1 - rare occurrence**

### Affinity to the forest environment

Affinity to the forest environment in Thermophyticum: **1.2 - taxon occurring mainly along forest edges and in forest openings, including forest roads and paths, windthrow sites, burnt sites and forest clearings**

Affinity to the forest environment in Mesophyticum and Oreophyticum: **1.2 - taxon occurring mainly along forest edges and in forest openings, including forest roads and paths, windthrow sites, burnt sites and forest clearings**

### Colonization ability

Index of colonization success (ICS): **1**

## Distribution and frequency

Continentality degree: **5**

Distribution range extension along the continentality gradient: **3**

Elevational belt in the Czech Republic: **colline belt**

Occurrence frequency in the basic grid mapping cells and quadrants of the basic grid mapping cells: **29**

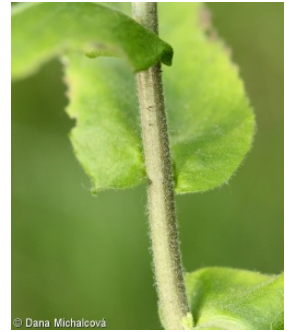
taxon.data.freq\_in\_quad: **38**

Commonness in vegetation plots from the Czech Republic

Occurrence frequency in vegetation plots: **0 %**

Occurrence frequency in vegetation plots with a cover above 5%: **0 %**

Occurrence frequency in vegetation plots with a cover above 25%: **0 %**  
Occurrence frequency in vegetation plots with a cover above 50%: **0 %**  
Mean percentage cover in vegetation plots: **2 %**  
Maximum percentage cover in vegetation plots: **2 %**  
Number of habitats with taxon occurrence in the Czech Republic  
Number of narrow habitats in which the taxon occurs: **8**  
Number of narrow habitats in which the taxon has its optimum: **1**  
Number of broad habitats in which the taxon occurs: **4**  
Number of broad habitats in which the taxon has its optimum: **1**



## Threats and protection

Red List 2017 (national categories): **C3 - vulnerable taxon**  
Red List 2017 (IUCN categories): **VU - vulnerable**  
Legal protection: **not protected by law**