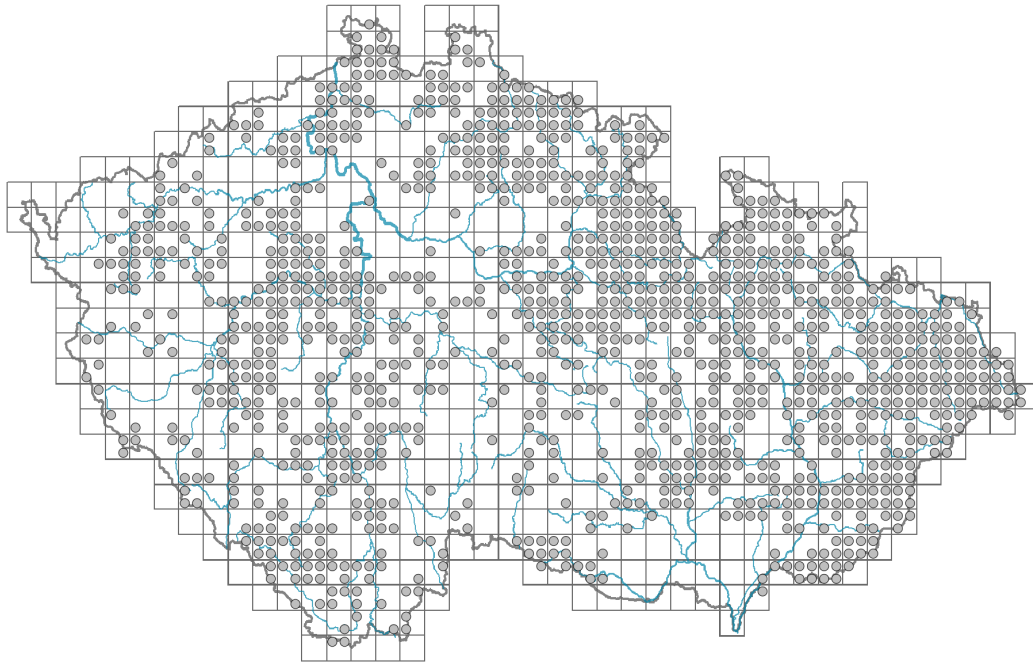


Ranunculus lanuginosus

Distribution



Map info

● revised records

○ unrevised records

On the map are not visualized records without the coordinates and records marked as incorrect or doubtful.



Habitus and growth type

Height [m]: **0.3-0.9**

Growth form: **clonal herb**

Life form: **hemicryptophyte**

Life strategy: **CS - competitor/stress-tolerator**

Leaf

Leaf presence and metamorphosis: **leaves present, not modified**

Leaf arrangement (phyllotaxis): **alternate, rosulate**

Leaf shape: **simple - palmately divided**

Stipules: **absent**

Petiole: **both present and absent**

Leaf life span: **summer green**

Leaf anatomy: **hygromorphic**

Flower

Flowering period [month]: **May-July**

Flowering phase: **4 Fagus sylvatica-Galeobdolon (start of mid-spring)**

Flower colour: **yellow**

Flower symmetry: **actinomorphic**

Perianth type: **calyx and corolla**

Perianth fusion: **free**
 Calyx fusion: **aposepalous**
 Inflorescence type: **anthella**
 Dicliny: **synoecious**
 Generative reproduction type: **facultative allogamy**
 Pollination syndrome: **insect-pollination, selfing**

Fruit, seed and dispersal

Fruit type: **dry fruit - head of achenes**
 Fruit colour: **brown**
 Reproduction type: **by seed/spores and vegetatively**
 Dispersal unit (diaspore): **fruit, infructescence or its part**
 Dispersal strategy: **Allium (mainly autochory)**
 Myrmecochory: **non-myrmecochorous (a)**

Belowground organs and clonality

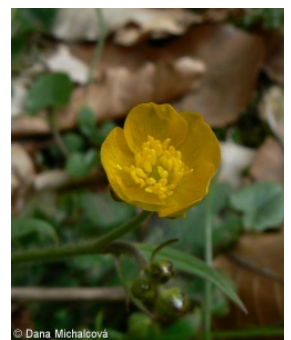
Shoot metamorphosis: **rhizome**
 Storage organ: **rhizome**
 Type of clonal growth organ: **epigeogenous rhizome**
 Freely dispersible organs of clonal growth: **absent**
 Shoot life span (cyclicality): **dicyclic or polycyclic shoots prevailing**
 Branching type of stem-derived organs of clonal growth: **sympodial**
 Primary root: **absent**
 Persistence of the clonal growth organ [year]:
 Number of clonal offspring:
 Lateral spreading distance by clonal growth [m]: **0.01**
 Clonal index: **3**

Bud bank

Number of buds per shoot at the soil surface (root buds excluded):
 Number of buds per shoot at a depth of 0–10 cm (root buds excluded):
 Number of buds per shoot at a depth greater than 10 cm (root buds excluded):
 Size of the belowground bud bank (root buds excluded):
 Depth of the belowground bud bank (root buds excluded) [cm]:
 Number of buds per shoot at the soil surface (root buds included):
 Number of buds per shoot at a depth of 0–10 cm (root buds included):
 Number of buds per shoot at a depth greater than 10 cm (root buds included):
 Size of the belowground bud bank (root buds included):
 Depth of the belowground bud bank (root buds included) [cm]:

Trophic mode

Parasitism and mycoheterotrophy: **autotrophic**
 Carnivory: **non-carnivorous**
 Symbiotic nitrogen fixation: **no nitrogen-fixing symbionts**



Karyology

Chromosome number (2n): **28**

Ploidy level (x): **4**

2C genome size [Mbp]: **19700.52**

1Cx monoploid genome size [Mbp]: **4925.13**

Genomic GC content: **43.9 %**

Taxon origin

Origin in the Czech Republic: **native**

Ecological indicator values

Ellenberg-type indicator values

Light indicator value: **3 - shade plant, usually occurring where the incident radiation is less than 5% of that in an open area, but also at sunnier sites**

Temperature indicator value: **5 - moderate heat indicator, occurring from lowland to montane belt, mainly in submontane-temperate areas**

Moisture indicator value: **6 - transition between values 5 and 7**

Reaction indicator value: **7 - indicator of slightly acidic to slightly basic conditions, never occurring in very acidic conditions**

Nutrient indicator value: **7 - occurring at nutrient-rich sites more often than at average sites and only exceptionally at poor sites**

Salinity indicator value: **0 - not salt tolerant, glycophyte**

Indicator values for disturbance

Whole-community disturbance frequency indicator value: **-1.89**

Herb layer disturbance frequency indicator value: **-0.66**

Whole-community disturbance severity indicator value: **0.28**

Herb layer disturbance severity indicator value: **0.14**

Whole-community structure based disturbance indicator value: **0.13**

Herb layer structure-based disturbance indicator value: **0.22**

Habitat and sociology

Occurrence in habitats

2 Alpine and subalpine grasslands

2B Subalpine tall-forb and tall-grass vegetation: **1 - rare occurrence**

4 Wetland and riverine herbaceous vegetation

4D Riverine reed vegetation: **1 - rare occurrence**

4E Reed vegetation of brooks: **1 - rare occurrence**

4K Petasites fringes of montane brooks: **2 - optimum**

5 Vegetation of springs and mires

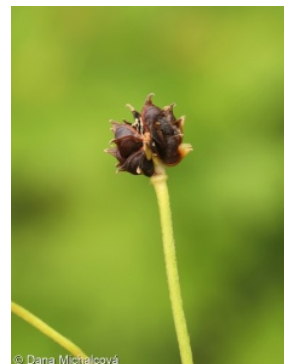
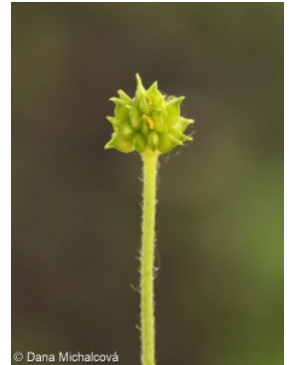
5A Hard-water springs with tufa formation: **1 - rare occurrence**

5B Lowland to montane soft-water springs: **1 - rare occurrence**

11 Heathlands and scrub

11H Subalpine deciduous scrub: **1 - rare occurrence**

11I Willow carrs: **1 - rare occurrence**



11J Willow galleries of loamy and sandy river banks: **1 - rare occurrence**

12 Forests

12A Alder carrs: **1 - rare occurrence**

12B Alluvial forests: **2 - optimum**

12C Oak-hornbeam forests: **2 - optimum**

12D Ravine forests: **2 - optimum**

12E Herb-rich beech forests: **2 - optimum**

12F Limestone beech forests: **1 - rare occurrence**

12G Acidophilous beech forests: **1 - rare occurrence**

12H Peri-Alpidic basiphilous thermophilous oak forests: **1 - rare occurrence**

12R Acidophilous spruce forests: **1 - rare occurrence**

12S Basiphilous spruce forests: **1 - rare occurrence**

12T Robinia pseudacacia plantations: **1 - rare occurrence**

12U Plantations of broad-leaved non-native trees: **2 - optimum**

12V Spruce plantations: **1 - rare occurrence**

13 Anthropogenic vegetation

13E Perennial nitrophilous herbaceous vegetation of mesic sites: **2 - optimum**

13F Herbaceous vegetation of forests clearings and Rubus scrub: **1 - rare occurrence**

Affinity to the forest environment

Affinity to the forest environment in Thermophyticum: **1.1 - taxon occurring mainly in the closed forest**

Affinity to the forest environment in Mesophyticum and Oreophyticum: **1.1 - taxon occurring mainly in the closed forest**

Diagnostic taxon

Diagnostic taxon of alliances: [LBA *Alnion incanae*](#)

Diagnostic taxon of associations: [LBA04 *Stellario nemorum-Alnetum glutinosae*](#)

Ecological specialization indices

Ecological specialization index for all vegetation types: **5.4**

Ecological specialization index for non-forest vegetation: **4.4**

Ecological specialization index for forest vegetation: **5.8**

Colonization ability

Index of colonization success (ICS): **3**

Index of colonization potential (ICP): **2**

Optimum successional age [years]: **9**

Distribution and frequency

Floristic zone: **northern temperate, southern temperate, submeridional**

Floristic region: **Europe**

Continentality degree: **5**

Distribution range extension along the continentality gradient: **3**

Elevational belt in the Czech Republic: **colline belt, submontane belt, montane belt**

Occurrence frequency in the basic grid mapping cells and quadrants of the basic grid mapping cells: **501**

taxon.data.freq_in_quad: **1180**

Commonness in vegetation plots from the Czech Republic

Occurrence frequency in vegetation plots: **1.1 %**

Occurrence frequency in vegetation plots with a cover above 5%: **5.6 %**

Occurrence frequency in vegetation plots with a cover above 25%: **0 %**

Occurrence frequency in vegetation plots with a cover above 50%: **0 %**

Mean percentage cover in vegetation plots: **2.6 %**

Maximum percentage cover in vegetation plots: **13 %**

Number of habitats with taxon occurrence in the Czech Republic

Number of narrow habitats in which the taxon occurs: **24**

Number of narrow habitats in which the taxon has its optimum: **7**

Number of broad habitats in which the taxon occurs: **6**

Number of broad habitats in which the taxon has its optimum: **3**

Threats and protection

Red List 2017 (national categories): **taxon is not on the Red List**

Red List 2017 (IUCN categories): **LC(NA) - least concern (taxon is not on the Red List)**

Legal protection: **not protected by law**