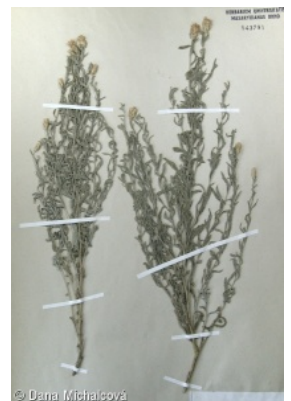
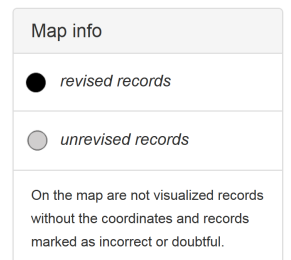
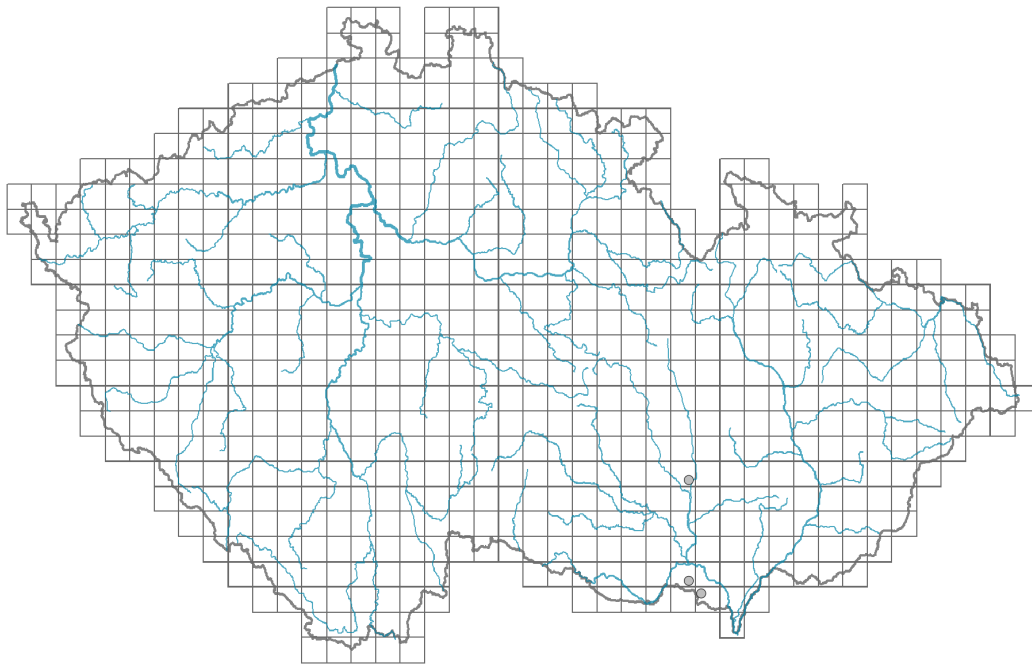


# *Rhaponticum repens*

## Distribution



## Habitus and growth type

Height [m]: **0.15-0.7**

Growth form: **clonal herb**

Life form: **hemicryptophyte (geophyte)**

## Leaf

Leaf presence and metamorphosis: **leaves present, not modified**

Leaf arrangement (phyllotaxis): **alternate**

Leaf shape: **simple - pinnately divided**

Stipules: **absent**

Petiole: **absent**

## Flower

Flowering period [month]: **July-August**

Flower colour: **pink**

Flower symmetry: **actinomorphic**

Perianth type: **calyx reduced, corolla present**

Perianth fusion: **fused**

Shape of the sympetalous corolla or syntepalous perianth: **tubular**

Calyx fusion: **pappus**

Inflorescence type: **corymbus ex anthodiis compositus**

Generative reproduction type: **alogamy self-incompatibility**

## Fruit, seed and dispersal

Fruit type: **dry fruit - achene/cypsela/samara**

Dispersal strategy: **Zea (no dispersal)**

Myrmecochory: **probably non-myrmecochorous**



## Belowground organs and clonality

Type of clonal growth organ: **root with adventitious buds**

Freely dispersible organs of clonal growth: **absent**

Shoot life span (cyclicality): **monocyclic shoots prevailing**

Branching type of stem-derived organs of clonal growth: **sympodial**

Primary root: **absent**

Persistence of the clonal growth organ [year]: **4**

Number of clonal offspring: **3.5**

Lateral spreading distance by clonal growth [m]: **0.27**

Clonal index: **6**

Position of root buds: **lateral roots**

Role of root buds in life-history of a plant: **regenerative**

### Bud bank

Number of buds per shoot at the soil surface (root buds excluded): **5**

Number of buds per shoot at a depth of 0–10 cm (root buds excluded): **5**

Number of buds per shoot at a depth greater than 10 cm (root buds excluded): **0**

Size of the belowground bud bank (root buds excluded): **10**

Depth of the belowground bud bank (root buds excluded) [cm]: **3**

Number of buds per shoot at the soil surface (root buds included): **5**

Number of buds per shoot at a depth of 0–10 cm (root buds included): **14**

Number of buds per shoot at a depth greater than 10 cm (root buds included): **15**

Size of the belowground bud bank (root buds included): **34**

Depth of the belowground bud bank (root buds included) [cm]: **9**

## Trophic mode

Parasitism and mycoheterotrophy: **autotrophic**

Carnivory: **non-carnivorous**

Symbiotic nitrogen fixation: **no nitrogen-fixing symbionts**

## Taxon origin

Origin in the Czech Republic: **neophyte**

Invasion status: **casual**

Geographic origin: **Mediterranean**

Year of the first record in the wild: **1945**

Period of introduction: **Late Modern Period (1800–1950)**

Introduction pathway: **unintentional - traffic**

## Habitat and sociology

Affinity to the forest environment

Affinity to the forest environment in Thermophyticum: **0 - taxon that does not spontaneously occur in Czech forests**

Affinity to the forest environment in Mesophyticum and Oreophyticum: **0 - taxon that does not spontaneously occur in Czech forests**

## Threats and protection

Red List 2017 (national categories): **taxon is not on the Red List**

Red List 2017 (IUCN categories): **LC(NA) - least concern (taxon is not on the Red List)**

Legal protection: **not protected by law**