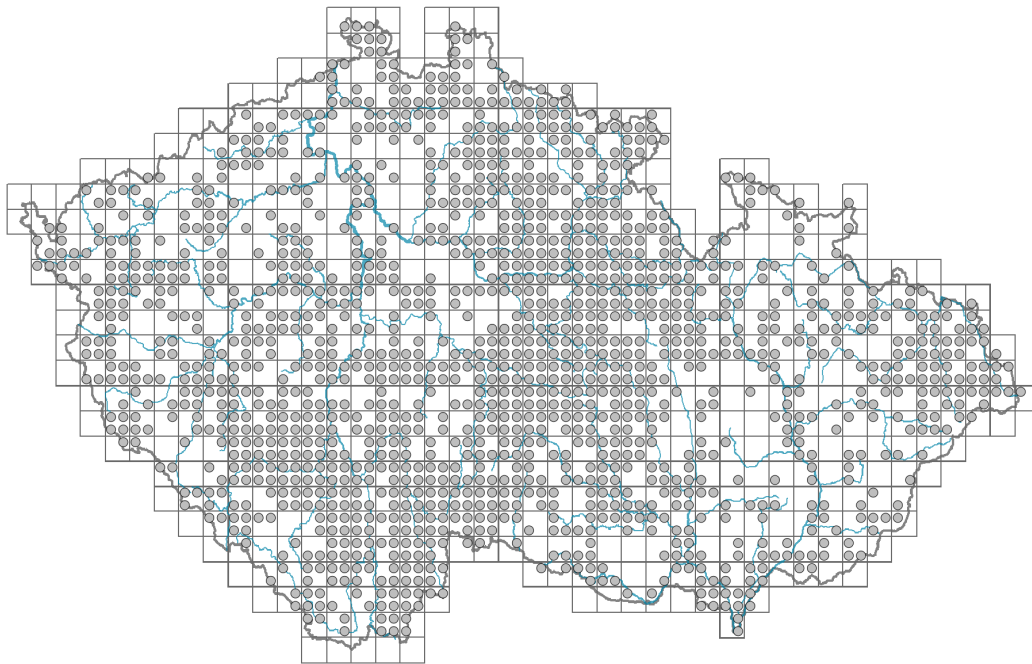


Rorippa palustris

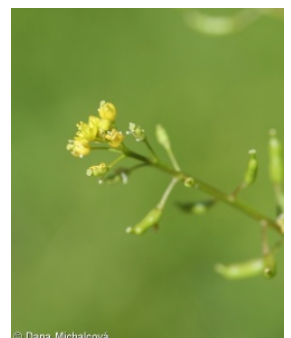
Distribution



Map info

- revised records
- unrevised records

On the map are not visualized records without the coordinates and records marked as incorrect or doubtful.



Habitus and growth type

Height [m]: **0.15-0.6**

Growth form: **annual herb**

Life form: **therophyte**

Life strategy: **CR - competitor/ruderal**

Life strategy (Pierce method based on leaf traits): **CR**

Life strategy (Pierce method, C-score): **39.7 %**

Life strategy (Pierce method, S-score): **0 %**

Life strategy (Pierce method, R-score): **60.3 %**

Leaf

Leaf presence and metamorphosis: **leaves present, not modified**

Leaf arrangement (phyllotaxis): **alternate**

Leaf shape: **simple - pinnately divided**

Stipules: **absent**

Petiole: **present**

Leaf life span: **summer green**

Leaf anatomy: **helomorphic**

Flower

Flowering period [month]: **June-July**

Flowering phase: **6 Cornus sanguinea-Melica uniflora (start of early summer)**

Flower colour: **yellow**

Flower symmetry: **actinomorphic**

Perianth type: **calyx and corolla**

Perianth fusion: **free**

Calyx fusion: **aposepalous**

Inflorescence type: **racemus**

Dicliny: **synoecious**

Generative reproduction type: **facultative autogamy**

Pollination syndrome: **insect-pollination, selfing**



Fruit, seed and dispersal

Fruit type: **dry fruit - silicula**

Fruit colour: **brown**

Reproduction type: **by seed/spores and vegetatively**

Dispersal unit (diaspore): **seed**

Dispersal strategy: **Sparganium (mainly autochory and hydrochory)**

Myrmecochory: **non-myrmecochorous (b)**



Belowground organs and clonality

Shoot life span (cyclicity): **monocyclic shoots prevailing**

Primary root: **present**

Position of root buds: **primary root**

Role of root buds in life-history of a plant: **additive**

Bud bank

Number of buds per shoot at the soil surface (root buds excluded): **5**

Number of buds per shoot at a depth of 0–10 cm (root buds excluded): **4**

Number of buds per shoot at a depth greater than 10 cm (root buds excluded): **0**

Size of the belowground bud bank (root buds excluded): **9**

Depth of the belowground bud bank (root buds excluded) [cm]: **3**

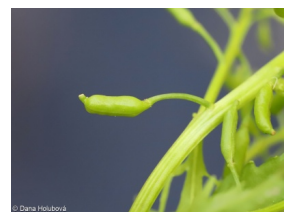
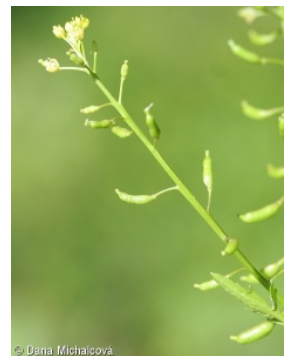
Number of buds per shoot at the soil surface (root buds included): **5**

Number of buds per shoot at a depth of 0–10 cm (root buds included): **10**

Number of buds per shoot at a depth greater than 10 cm (root buds included): **15**

Size of the belowground bud bank (root buds included): **30**

Depth of the belowground bud bank (root buds included) [cm]: **9**

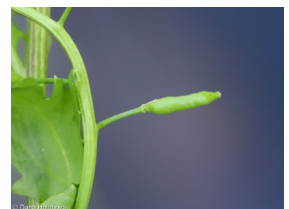


Trophic mode

Parasitism and mycoheterotrophy: **autotrophic**

Carnivory: **non-carnivorous**

Symbiotic nitrogen fixation: **no nitrogen-fixing symbionts**



Karyology

Chromosome number (2n): **32**

Ploidy level (x): **4**

2C genome size [Mbp]: **1027.17**

1Cx monoploid genome size [Mbp]: **256.79**

Genomic GC content: **39.3 %**

Taxon origin

Origin in the Czech Republic: **native**

Ecological indicator values

Ellenberg-type indicator values

Light indicator value: **7 - half-light plant, mostly occurring at full light, but also in the shade up to about 30% of diffuse radiation incident in an open area**

Temperature indicator value: **6 - transition between values 5 and 7**

Moisture indicator value: **9 - wetness indicator, focus on often soaked, poorly aerated soils**

Reaction indicator value: **6x - transition between values 5 and 7 (generalist)**

Nutrient indicator value: **7 - occurring at nutrient-rich sites more often than at average sites and only exceptionally at poor sites**

Salinity indicator value: **1 - salt tolerant, mostly on low-salt to salt-free soils, but occasionally on slightly salty soils**

Indicator values for disturbance

Whole-community disturbance frequency indicator value: **-0.37**

Herb layer disturbance frequency indicator value: **-0.34**

Whole-community disturbance severity indicator value: **0.52**

Herb layer disturbance severity indicator value: **0.53**

Whole-community structure based disturbance indicator value: **0.66**

Herb layer structure-based disturbance indicator value: **0.68**

Habitat and sociology

Occurrence in habitats

3 Aquatic vegetation

3C Macrophytic vegetation of oligotrophic lakes and pools: **2 - optimum**

4 Wetland and riverine herbaceous vegetation

4A Reed-beds of eutrophic still waters: **1 - rare occurrence**

4B Halophilous reed and sedge beds: **1 - rare occurrence**

4C Eutrophic vegetation of muddy substrata: **2 - optimum**

4D Riverine reed vegetation: **2 - optimum**

4E Reed vegetation of brooks: **1 - rare occurrence**

4F Mesotrophic vegetation of muddy substrata: **1 - rare occurrence**

4G Tall-sedge beds: **1 - rare occurrence**

4H Vegetation of low annual hygrophilous herbs: **2 - optimum**

4I Vegetation of nitrophilous annual hygrophilous herbs: **3 - dominant**

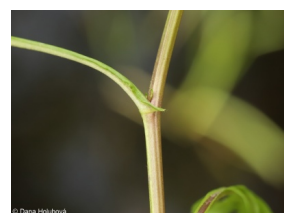
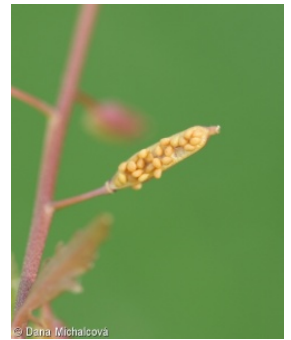
6 Meadows and mesic pastures

6G Vegetation of wet disturbed soils: **1 - rare occurrence**

10 Saline vegetation

10I Inland saline meadows: **1 - rare occurrence**

11 Heathlands and scrub



11J Willow galleries of loamy and sandy river banks: **1 - rare occurrence**

13 Anthropogenic vegetation

13A Annual vegetation of ruderal habitats: **1 - rare occurrence**

Affinity to the forest environment

Affinity to the forest environment in Thermophyticum: **0 - taxon that does not spontaneously occur in Czech forests**

Affinity to the forest environment in Mesophyticum and Oreophyticum: **0 - taxon that does not spontaneously occur in Czech forests**

Diagnostic taxon

Diagnostic taxon of classes: [MA Isoëto-Nano-Juncetea](#), [MB Bidentetea tripartitae](#)

Diagnostic taxon of alliances: [MAA Eleocharition ovatae](#), [MAC Verbenion supinae](#), [MBA Bidention tripartitae](#)

Diagnostic taxon of associations: [MAA01 Polygono-Eleocharitetum ovatae](#), [MAA02 Cyperetum micheliani](#), [MAA03 Stellario uliginosae-Isolepidetum setaceae](#), [MAC01 Veronico anagalloidis-Lythretum hyssopifoliae](#), [MBA01 Rumici maritimi-Ranunculetum scelerati](#), [MBA02 Bidentetum tripartitae](#), [MBA04 Polygono brittingeri-Chenopodietum rubri](#), [MBA05 Corrigiolo littoralis-Bidentetum radiatae](#)

Constant taxon

Constant taxon of classes: [MA Isoëto-Nano-Juncetea](#)

Constant taxon of alliances: [MAA Eleocharition ovatae](#), [MAC Verbenion supinae](#), [MBA Bidention tripartitae](#)

Constant taxon of associations: [MAA01 Polygono-Eleocharitetum ovatae](#), [MAA02 Cyperetum micheliani](#), [MAA03 Stellario uliginosae-Isolepidetum setaceae](#), [MAC01 Veronico anagalloidis-Lythretum hyssopifoliae](#), [MBA01 Rumici maritimi-Ranunculetum scelerati](#), [MBA02 Bidentetum tripartitae](#), [MBA04 Polygono brittingeri-Chenopodietum rubri](#), [MBA05 Corrigiolo littoralis-Bidentetum radiatae](#), [VDB04 Pilularietum globuliferae](#)

Dominant taxon

Dominant taxon of associations: [MBA01 Rumici maritimi-Ranunculetum scelerati](#), [MBA04 Polygono brittingeri-Chenopodietum rubri](#), [MBA05 Corrigiolo littoralis-Bidentetum radiatae](#)

Ecological specialization indices

Ecological specialization index for all vegetation types: **4.7**

Ecological specialization index for non-forest vegetation: **4.8**

Ecological specialization index for forest vegetation: **5.3**

Colonization ability

Index of colonization success (ICS): **5**

Index of colonization potential (ICP): **5**

Optimum successional age [years]: **2**

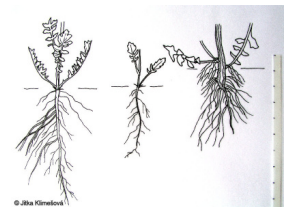
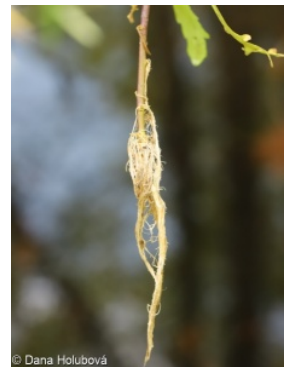
Distribution and frequency

Floristic zone: **boreal, northern temperate, southern temperate, submeridional, meridional**

Floristic region: **circumpolar**

Distribution range extension along the continentality gradient: **9**

Elevational belt in the Czech Republic: **lowlands, colline belt, submontane belt, montane belt**



Occurrence frequency in the basic grid mapping cells and quadrants of the basic grid mapping cells: 574

taxon.data.freq_in_quad: 1449

Commonness in vegetation plots from the Czech Republic

Occurrence frequency in vegetation plots: **2.2 %**

Occurrence frequency in vegetation plots with a cover above 5%: **12.7 %**

Occurrence frequency in vegetation plots with a cover above 25%: **2.6 %**

Occurrence frequency in vegetation plots with a cover above 50%: **0.3 %**

Mean percentage cover in vegetation plots: **4.2 %**

Maximum percentage cover in vegetation plots: **88 %**

Number of habitats with taxon occurrence in the Czech Republic

Number of narrow habitats in which the taxon occurs: **14**

Number of narrow habitats in which the taxon has its optimum: **5**

Number of broad habitats in which the taxon occurs: **6**

Number of broad habitats in which the taxon has its optimum: **2**

Threats and protection

Red List 2017 (national categories): **taxon is not on the Red List**

Red List 2017 (IUCN categories): **LC(NA) - least concern (taxon is not on the Red List)**

Legal protection: **not protected by law**

