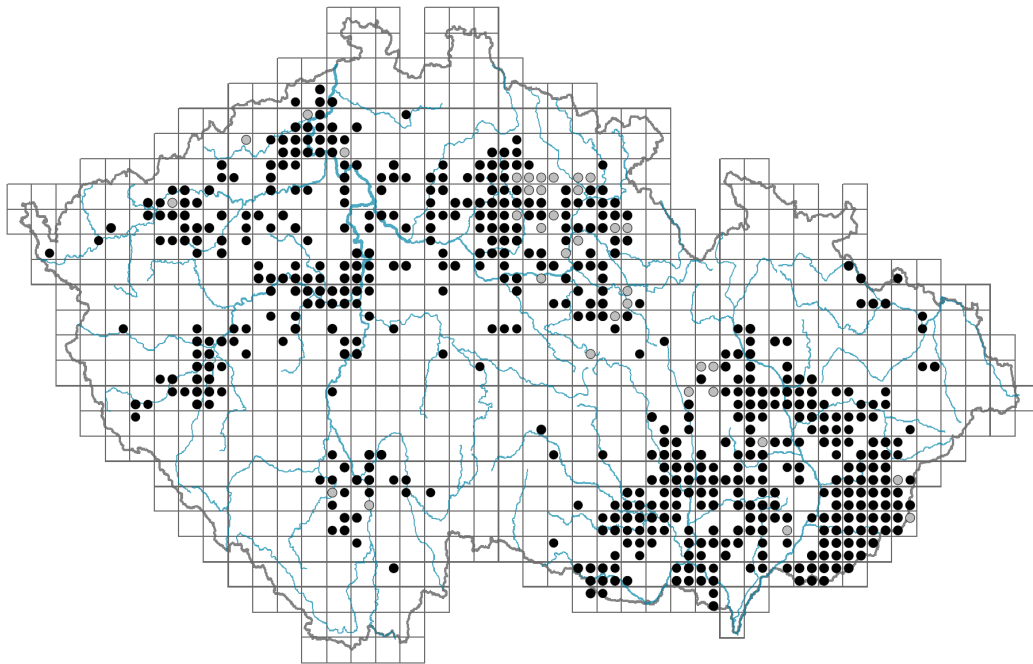


# Rosa gallica

## Distribution

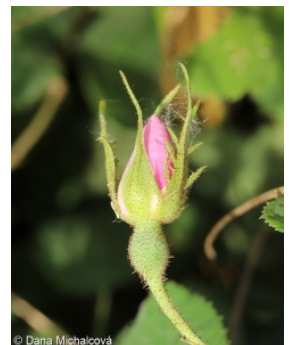
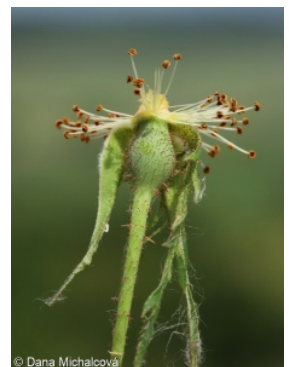


### Map info

● revised records

○ unrevised records

On the map are not visualized records without the coordinates and records marked as incorrect or doubtful.



## Habitus and growth type

Height [m]: **0.3-1**

Growth form: **shrub**

Life form: **nanophanerophyte**

Life strategy: **C - competitor**

Life strategy (Pierce method based on leaf traits): **S**

Life strategy (Pierce method, C-score): **13.5 %**

Life strategy (Pierce method, S-score): **86.6 %**

Life strategy (Pierce method, R-score): **0 %**

## Leaf

Leaf presence and metamorphosis: **leaves present, not modified**

Leaf arrangement (phyllotaxis): **alternate**

Leaf shape: **compound - imparipinnate**

Stipules: **present**

Petiole: **present**

Leaf life span: **summer green**

Leaf deciduousness in woody plants: **winter deciduous**

Leaf anatomy: **mesomorphic**

Functional leaf type in woody plants: **broad deciduous or semi-deciduous**

## Flower

Flowering period [month]: **June-July**

Flowering phase: **7 Ligustrum vulgare-Stachys sylvatica (end of early summer)**

Flower colour: **pink**

Flower symmetry: **actinomorphic**

Perianth type: **calyx and corolla**

Perianth fusion: **free**

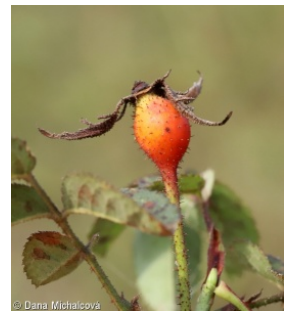
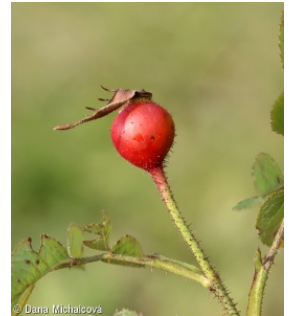
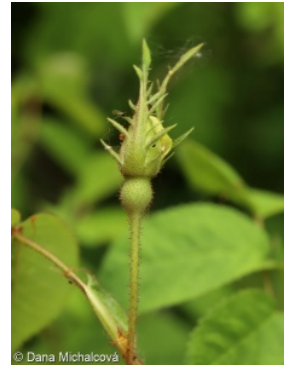
Calyx fusion: **aposepalous**

Inflorescence type: **flores solitarii**

Dicliny: **synoecious**

Generative reproduction type: **facultative allogamy**

Pollination syndrome: **insect-pollination, selfing**



## Fruit, seed and dispersal

Fruit type: **fleshy fruit - hip**

Fruit colour: **red**

Reproduction type: **by seed/spores and vegetatively**

Dispersal unit (diaspore): **seed, fruit, infrutescence or its part**

Dispersal strategy: **Cornus (mainly autochory and endozoochory)**

Myrmecochory: **non-myrmecochorous (b)**

## Belowground organs and clonality

Root metamorphosis: **root shoot**

Position of root buds: **lateral roots**

Role of root buds in life-history of a plant: **additive**

### Bud bank

Number of buds per shoot at the soil surface (root buds excluded): **5**

Number of buds per shoot at a depth of 0–10 cm (root buds excluded): **5**

Number of buds per shoot at a depth greater than 10 cm (root buds excluded): **0**

Size of the belowground bud bank (root buds excluded): **10**

Depth of the belowground bud bank (root buds excluded) [cm]: **3**

Number of buds per shoot at the soil surface (root buds included): **5**

Number of buds per shoot at a depth of 0–10 cm (root buds included): **13**

Number of buds per shoot at a depth greater than 10 cm (root buds included): **15**

Size of the belowground bud bank (root buds included): **33**

Depth of the belowground bud bank (root buds included) [cm]: **9**

## Trophic mode

Parasitism and mycoheterotrophy: **autotrophic**

Carnivory: **non-carnivorous**

Symbiotic nitrogen fixation: **no nitrogen-fixing symbionts**

## Karyology

Chromosome number (2n): **28**

Ploidy level (x): **4**  
 2C genome size [Mbp]: **1857.71**  
 1Cx monoploid genome size [Mbp]: **464.43**  
 Genomic GC content: **40.9 %**

## Taxon origin

Origin in the Czech Republic: **native**

## Ecological indicator values

### Ellenberg-type indicator values

Light indicator value: **7 - half-light plant, mostly occurring at full light, but also in the shade up to about 30% of diffuse radiation incident in an open area**

Temperature indicator value: **7 - heat indicator, occurring in relatively warm lowlands**

Moisture indicator value: **4 - transition between values 3 and 5**

Reaction indicator value: **7 - indicator of slightly acidic to slightly basic conditions, never occurring in very acidic conditions**

Nutrient indicator value: **4 - transition between values 3 and 5**

Salinity indicator value: **0 - not salt tolerant, glycophyte**

### Indicator values for disturbance

Whole-community disturbance frequency indicator value: **-1.57**

Herb layer disturbance frequency indicator value: **-0.66**

Whole-community disturbance severity indicator value: **0.22**

Herb layer disturbance severity indicator value: **0.17**

Whole-community structure based disturbance indicator value: **0.25**

Herb layer structure-based disturbance indicator value: **0.3**

## Habitat and sociology

### Occurrence in habitats

#### 6 Meadows and mesic pastures

6A Mesic Arrhenatherum meadows: **1 - rare occurrence**

6C Pastures and park grasslands: **1 - rare occurrence**

6F Intermittently wet Molinia meadows: **1 - rare occurrence**

#### 8 Dry grasslands

8B Submediterranean dry grasslands on rock outcrops: **1 - rare occurrence**

8C Narrow-leaved sub-continental steppes: **1 - rare occurrence**

8D Broad-leaved dry grasslands: **2 - optimum**

8F Thermophilous forest fringe vegetation: **2 - optimum**

#### 11 Heathlands and scrub

11L Tall mesic and xeric shrub: **1 - rare occurrence**

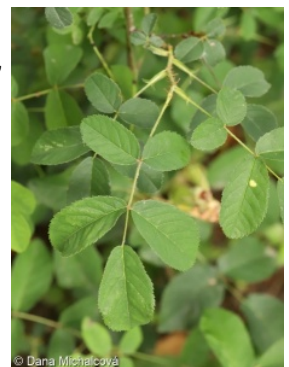
11N Low xeric scrub: **3 - dominant**

#### 12 Forests

12H Peri-Alpidic basiphilous thermophilous oak forests: **1 - rare occurrence**

12I Sub-continental thermophilous oak forests: **2 - optimum**

12J Acidophilous thermophilous oak forests: **1 - rare occurrence**



12K Acidophilous oak forests: **1 - rare occurrence**

Affinity to the forest environment

Affinity to the forest environment in Thermophyticum: **2.2 - taxon occurring partly in the forest, but mainly in open vegetation**

Affinity to the forest environment in Mesophyticum and Oreophyticum: **2.2 - taxon occurring partly in the forest, but mainly in open vegetation**

Ecological specialization indices

Ecological specialization index for all vegetation types: **4.8**

Ecological specialization index for non-forest vegetation: **5.1**

Ecological specialization index for forest vegetation: **5.6**

Colonization ability

Index of colonization success (ICS): **3**

Index of colonization potential (ICP): **6**

Optimum successional age [years]: **75**

## Distribution and frequency

Floristic zone: **northern temperate, southern temperate, submeridional, meridional**

Floristic region: **Europe**

Continentality degree: **6**

Distribution range extension along the continentality gradient: **3**

Elevational belt in the Czech Republic: **lowlands, colline belt**

Occurrence frequency in the basic grid mapping cells and quadrants of the basic grid mapping cells: **276**

taxon.data.freq\_in\_quad: **586**

Commonness in vegetation plots from the Czech Republic

Occurrence frequency in vegetation plots: **0.2 %**

Occurrence frequency in vegetation plots with a cover above 5%: **22.1 %**

Occurrence frequency in vegetation plots with a cover above 25%: **2.9 %**

Occurrence frequency in vegetation plots with a cover above 50%: **1.5 %**

Mean percentage cover in vegetation plots: **5.9 %**

Maximum percentage cover in vegetation plots: **63 %**

Number of habitats with taxon occurrence in the Czech Republic

Number of narrow habitats in which the taxon occurs: **13**

Number of narrow habitats in which the taxon has its optimum: **4**

Number of broad habitats in which the taxon occurs: **4**

Number of broad habitats in which the taxon has its optimum: **3**

## Threats and protection

Red List 2017 (national categories): **C3 - vulnerable taxon**

Red List 2017 (IUCN categories): **VU - vulnerable**

Legal protection: **not protected by law**