

Rubus barberi

Distribution

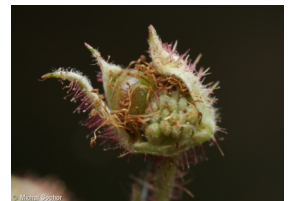


Map info

● revised records

○ unrevised records

On the map are not visualized records without the coordinates and records marked as incorrect or doubtful.



Habitus and growth type

Life strategy: **C - competitor**

Leaf

Leaf presence and metamorphosis: **leaves present, not modified**

Leaf arrangement (phyllotaxis): **alternate**

Leaf shape: **compound - ternate**

Stipules: **present**

Petiole: **present**

Leaf anatomy: **mesomorphic**

Flower

Flower colour: **white**

Flower symmetry: **actinomorphic**

Perianth type: **calyx and corolla**

Perianth fusion: **free**

Calyx fusion: **aposepalous**

Inflorescence type: **panicula**

Dicliny: **synoecious**

Pollination syndrome: **insect-pollination, selfing**

Fruit, seed and dispersal

Fruit type: **fleshy fruit - head of one-seeded drupes**

Reproduction type: **by seed/spores and vegetatively**

Dispersal unit (diaspore): **seed, fruit, infrutescence or its part**

Dispersal strategy: **Cornus (mainly autochory and endozoochory)**

Myrmecochory: **non-myrmecochorous (b)**



Belowground organs and clonality

Shoot metamorphosis: **stolon**

Trophic mode

Parasitism and mycoheterotrophy: **autotrophic**

Carnivory: **non-carnivorous**

Symbiotic nitrogen fixation: **no nitrogen-fixing symbionts**

Taxon origin

Origin in the Czech Republic: **native**

Habitat and sociology

Affinity to the forest environment

Affinity to the forest environment in Mesophyticum and Oreophyticum: **1.2 - taxon occurring mainly along forest edges and in forest openings, including forest roads and paths, windthrow sites, burnt sites and forest clearings**

Distribution and frequency

Floristic region: **Europe**

Occurrence frequency in the basic grid mapping cells and quadrants of the basic grid mapping cells: 2

taxon.data.freq_in_quad: 2

Threats and protection

Red List 2017 (national categories): **A2 - missing taxon**

Red List 2017 (IUCN categories): **DD - data deficient**

Legal protection: **not protected by law**