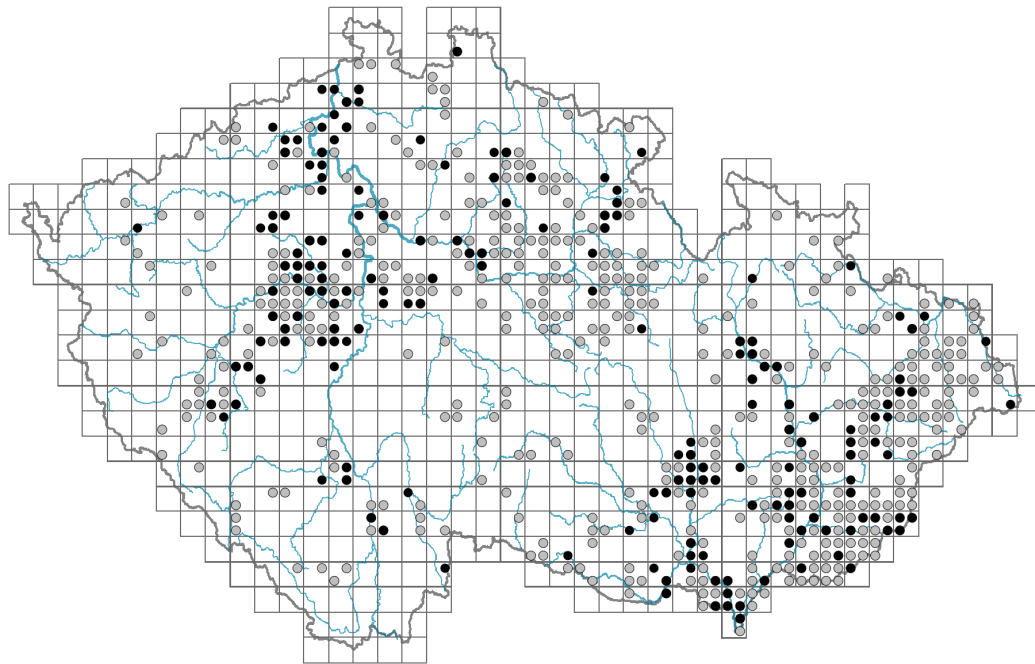


# *Rumex sanguineus*

## Distribution



### Map info

● revised records

● unrevised records

On the map are not visualized records without the coordinates and records marked as incorrect or doubtful.

## Habitus and growth type

Height [m]: **0.5-1.2**

Growth form: **polycarpic perennial non-clonal herb**

Life form: **hemicryptophyte**

Life strategy: **CS - competitor/stress-tolerator**

Life strategy (Pierce method based on leaf traits): **CR/CSR**

Life strategy (Pierce method, C-score): **51.6 %**

Life strategy (Pierce method, S-score): **14.9 %**

Life strategy (Pierce method, R-score): **33.6 %**



## Leaf

Leaf presence and metamorphosis: **leaves present, not modified**

Leaf arrangement (phyllotaxis): **alternate**

Leaf shape: **simple - entire**

Stipules: **present**

Petiole: **present**

Leaf life span: **summer green**

Leaf anatomy: **hygromorphic, helomorphic**



## Flower

Flowering period [month]: **June-July**

Flowering phase: **8 Clematis vitalba-Galium sylvaticum (mid-summer)**

Flower colour: **green**

Flower symmetry: **actinomorphic**

Perianth type: **homochlamydeous**

Perianth fusion: **free**

Inflorescence type: **panicula e pseudospicis composita**

Dicliny: **synoecious, andromonoecious, androdioecious**

Pollination syndrome: **wind-pollination**



## Fruit, seed and dispersal

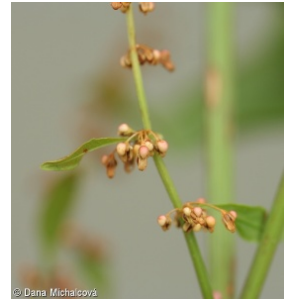
Fruit type: **dry fruit - achene/cypsela/samara**

Reproduction type: **mostly by seed/spores, rarely vegetatively**

Dispersal unit (diaspore): **fruit, infrutescence or its part**

Dispersal strategy: **Allium (mainly autochory)**

Myrmecochory: **probably non-myrmecochorous**



## Belowground organs and clonality

Shoot metamorphosis: **rhizome-like pleiocorm**

Root metamorphosis: **primary storage root, root shoot**

Storage organ: **rhizome-like pleiocorm, primary storage root**

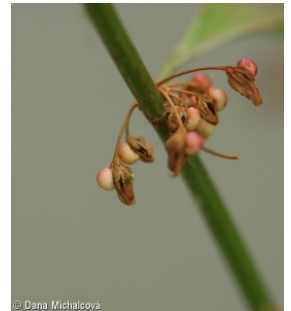
Shoot life span (cyclicity): **dicyclic or polycyclic shoots prevailing**

Branching type of stem-derived organs of clonal growth: **sympodial**

Primary root: **present**

Position of root buds: **primary root**

Role of root buds in life-history of a plant: **regenerative**



## Bud bank

Number of buds per shoot at the soil surface (root buds excluded): **5**

Number of buds per shoot at a depth of 0–10 cm (root buds excluded): **15**

Number of buds per shoot at a depth greater than 10 cm (root buds excluded): **4**

Size of the belowground bud bank (root buds excluded): **24**

Depth of the belowground bud bank (root buds excluded) [cm]: **6**

Number of buds per shoot at the soil surface (root buds included): **5**

Number of buds per shoot at a depth of 0–10 cm (root buds included): **20**

Number of buds per shoot at a depth greater than 10 cm (root buds included): **9**

Size of the belowground bud bank (root buds included): **34**

Depth of the belowground bud bank (root buds included) [cm]: **7**



## Trophic mode

Parasitism and mycoheterotrophy: **autotrophic**

Carnivory: **non-carnivorous**

Symbiotic nitrogen fixation: **no nitrogen-fixing symbionts**



## Karyology

Chromosome number (2n): **20**

Ploidy level (x): **2**

2C genome size [Mbp]: **1408.68**  
 1Cx monoploid genome size [Mbp]: **704.34**  
 Genomic GC content: **40.8 %**

## Taxon origin

Origin in the Czech Republic: **native**

## Ecological indicator values

Ellenberg-type indicator values

Light indicator value: **4 - transition between values 3 and 5**

Temperature indicator value: **6 - transition between values 5 and 7**

Moisture indicator value: **7 - humidity indicator, focus on well moistened, but not wet soils**

Reaction indicator value: **7 - indicator of slightly acidic to slightly basic conditions, never occurring in very acidic conditions**

Nutrient indicator value: **7 - occurring at nutrient-rich sites more often than at average sites and only exceptionally at poor sites**

Salinity indicator value: **0 - not salt tolerant, glycophyte**

Indicator values for disturbance

Whole-community disturbance frequency indicator value: **-1.7**

Herb layer disturbance frequency indicator value: **-0.71**

Whole-community disturbance severity indicator value: **0.31**

Herb layer disturbance severity indicator value: **0.23**

Whole-community structure based disturbance indicator value: **0.2**

Herb layer structure-based disturbance indicator value: **0.23**

## Habitat and sociology

Occurrence in habitats

4 Wetland and riverine herbaceous vegetation

4D Riverine reed vegetation: **1 - rare occurrence**

4E Reed vegetation of brooks: **1 - rare occurrence**

4I Vegetation of nitrophilous annual hygrophilous herbs: **1 - rare occurrence**

5 Vegetation of springs and mires

5B Lowland to montane soft-water springs: **2 - optimum**

6 Meadows and mesic pastures

6G Vegetation of wet disturbed soils: **2 - optimum**

11 Heathlands and scrub

11J Willow galleries of loamy and sandy river banks: **1 - rare occurrence**

11R Scrub and pioneer woodland of forests clearings: **1 - rare occurrence**

12 Forests

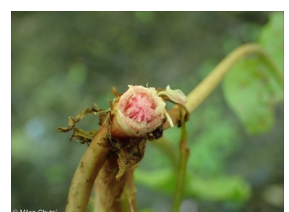
12A Alder carrs: **1 - rare occurrence**

12B Alluvial forests: **2 - optimum**

12C Oak-hornbeam forests: **1 - rare occurrence**

12D Ravine forests: **1 - rare occurrence**

12E Herb-rich beech forests: **1 - rare occurrence**



12U Plantations of broad-leaved non-native trees: **2 - optimum**

12V Spruce plantations: **1 - rare occurrence**

13 Anthropogenic vegetation

13E Perennial nitrophilous herbaceous vegetation of mesic sites: **2 - optimum**

13F Herbaceous vegetation of forests clearings and Rubus scrub: **1 - rare occurrence**

Affinity to the forest environment

Affinity to the forest environment in Thermophyticum: **1.1 - taxon occurring mainly in the closed forest**

Affinity to the forest environment in Mesophyticum and Oreophyticum: **1.1 - taxon occurring mainly in the closed forest**

Diagnostic taxon

Diagnostic taxon of associations: [LBA07 Fraxino pannonicae-Ulmetum glabrae](#)

Constant taxon

Constant taxon of associations: [LBA07 Fraxino pannonicae-Ulmetum glabrae](#)

Ecological specialization indices

Ecological specialization index for all vegetation types: **5.1**

Ecological specialization index for non-forest vegetation: **4.1**

Ecological specialization index for forest vegetation: **5.7**

Colonization ability

Index of colonization success (ICS): **4**

Index of colonization potential (ICP): **7**

Optimum successional age [years]: **3.5**

## Distribution and frequency

Floristic zone: **northern temperate, southern temperate, submeridional**

Floristic region: **Europe**

Continental degree: **4**

Distribution range extension along the continentality gradient: **4**

Elevational belt in the Czech Republic: **lowlands, colline belt, submontane belt**

Occurrence frequency in the basic grid mapping cells and quadrants of the basic grid mapping cells: **323**

taxon.data.freq\_in\_quad: **600**

Commonness in vegetation plots from the Czech Republic

Occurrence frequency in vegetation plots: **0.4 %**

Occurrence frequency in vegetation plots with a cover above 5%: **4.3 %**

Occurrence frequency in vegetation plots with a cover above 25%: **0 %**

Occurrence frequency in vegetation plots with a cover above 50%: **0 %**

Mean percentage cover in vegetation plots: **2.3 %**

Maximum percentage cover in vegetation plots: **13 %**

Number of habitats with taxon occurrence in the Czech Republic

Number of narrow habitats in which the taxon occurs: **16**

Number of narrow habitats in which the taxon has its optimum: **5**

Number of broad habitats in which the taxon occurs: **6**

Number of broad habitats in which the taxon has its optimum: **4**



## **Threats and protection**

Red List 2017 (national categories): **taxon is not on the Red List**

Red List 2017 (IUCN categories): **LC(NA) - least concern (taxon is not on the Red List)**

Legal protection: **not protected by law**