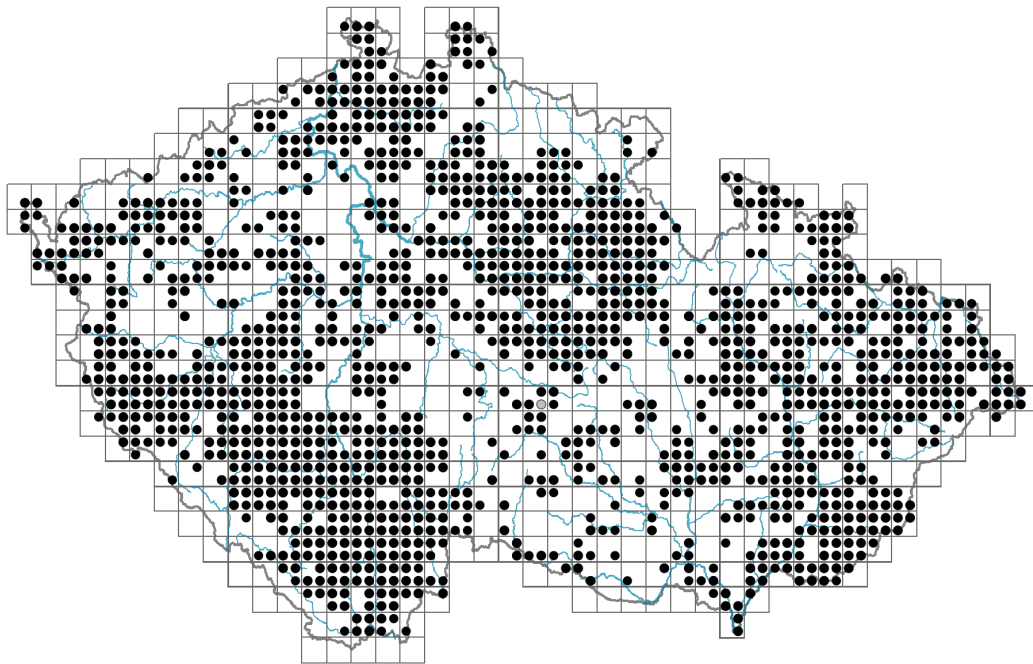


Selinum carvifolia

Distribution



Map info

● revised records

○ unrevised records

On the map are not visualized records without the coordinates and records marked as incorrect or doubtful.

Habitus and growth type

Height [m]: **0.4-0.8**

Growth form: **clonal herb**

Life form: **hemicryptophyte**

Life strategy: **CS - competitor/stress-tolerator**

Life strategy (Pierce method based on leaf traits): **C/CSR**

Life strategy (Pierce method, C-score): **55.5 %**

Life strategy (Pierce method, S-score): **22.3 %**

Life strategy (Pierce method, R-score): **22.2 %**



Leaf

Leaf presence and metamorphosis: **leaves present, not modified**

Leaf arrangement (phyllotaxis): **alternate**

Leaf shape: **compound - bipinnate, compound - tripinnate**

Stipules: **absent**

Petiole: **present**

Leaf life span: **summer green**

Leaf anatomy: **scleromorphic, helomorphic**

Flower

Flowering period [month]: **July-September**



Flowering phase: **7 Ligustrum vulgare-Stachys sylvatica (end of early summer)**

Flower colour: **white**

Flower symmetry: **actinomorphic**

Perianth type: **calyx absent, corolla present**

Perianth fusion: **free**

Inflorescence type: **umbella composita**

Dicliny: **andromonoecious**

Generative reproduction type: **facultative allogamy**

Pollination syndrome: **insect-pollination**

Pollinator spectrum: **hoverflies, flies s. l., meat flies s. l., other Diptera (honeybee, solitary bees, other Hymenoptera, butterflies, beetles, nitidulids, other pollinators)**



Fruit, seed and dispersal

Fruit type: **dry fruit - cremocarp**

Fruit colour: **brown**

Reproduction type: **only by seed/spores**

Dispersal unit (diaspore): **fruit, infrutescence or its part**

Dispersal strategy: **Allium (mainly autochory)**

Myrmecochory: **non-myrmecochorous (b)**



Belowground organs and clonality

Shoot metamorphosis: **pleiocorm**

Storage organ: **pleiocorm**

Type of clonal growth organ: **epigeogenous rhizome**

Freely dispersible organs of clonal growth: **absent**

Shoot life span (cyclicity): **dicyclic or polycyclic shoots prevailing**

Branching type of stem-derived organs of clonal growth: **sympodial**

Primary root: **absent**

Persistence of the clonal growth organ [year]:

Number of clonal offspring:

Lateral spreading distance by clonal growth [m]: **0.01**

Clonal index: **3**

Bud bank

Number of buds per shoot at the soil surface (root buds excluded):

Number of buds per shoot at a depth of 0–10 cm (root buds excluded):

Number of buds per shoot at a depth greater than 10 cm (root buds excluded):

Size of the belowground bud bank (root buds excluded):

Depth of the belowground bud bank (root buds excluded) [cm]:

Number of buds per shoot at the soil surface (root buds included):

Number of buds per shoot at a depth of 0–10 cm (root buds included):

Number of buds per shoot at a depth greater than 10 cm (root buds included):

Size of the belowground bud bank (root buds included):

Depth of the belowground bud bank (root buds included) [cm]:



Trophic mode

Parasitism and mycoheterotrophy: **autotrophic**

Carnivory: **non-carnivorous**

Symbiotic nitrogen fixation: **no nitrogen-fixing symbionts**

Karyology

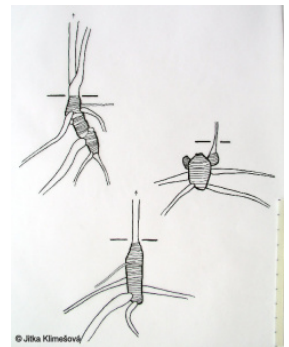
Chromosome number (2n): **22**

Ploidy level (x): **2**

2C genome size [Mbp]: **5694.68**

1Cx monoploid genome size [Mbp]: **2847.34**

Genomic GC content: **38.8 %**



Taxon origin

Origin in the Czech Republic: **native**

Ecological indicator values

Ellenberg-type indicator values

Light indicator value: **6 - transition between values 5 and 7; rarely at less than 20% of diffuse radiation incident in an open area**

Temperature indicator value: **5 - moderate heat indicator, occurring from lowland to montane belt, mainly in submontane-temperate areas**

Moisture indicator value: **7 - humidity indicator, focus on well moistened, but not wet soils**

Reaction indicator value: **6 - transition between values 5 and 7**

Nutrient indicator value: **4 - transition between values 3 and 5**

Salinity indicator value: **0 - not salt tolerant, glycophyte**

Indicator values for disturbance

Whole-community disturbance frequency indicator value: **-1.01**

Herb layer disturbance frequency indicator value: **-0.34**

Whole-community disturbance severity indicator value: **0.29**

Herb layer disturbance severity indicator value: **0.3**

Whole-community structure based disturbance indicator value: **0.43**

Herb layer structure-based disturbance indicator value: **0.55**

Habitat and sociology

Occurrence in habitats

4 Wetland and riverine herbaceous vegetation

4A Reed-beds of eutrophic still waters: **1 - rare occurrence**

4D Riverine reed vegetation: **1 - rare occurrence**

4G Tall-sedge beds: **1 - rare occurrence**

4K Petasites fringes of montane brooks: **1 - rare occurrence**

4L Nitrophilous herbaceous fringes of lowland rivers: **1 - rare occurrence**

5 Vegetation of springs and mires

5A Hard-water springs with tufa formation: **1 - rare occurrence**

5B Lowland to montane soft-water springs: **1 - rare occurrence**

5D Calcareous fens: **2 - optimum**

5E Acidic moss-rich fens and peatland meadows: **1 - rare occurrence**

5F Transitional mires: **1 - rare occurrence**

6 Meadows and mesic pastures

6A Mesic Arrhenatherum meadows: **1 - rare occurrence**

6C Pastures and park grasslands: **1 - rare occurrence**

6D Alluvial meadows of lowland rivers: **2 - optimum**

6E Wet Cirsium meadows: **2 - optimum**

6F Intermittently wet Molinia meadows: **2 - optimum**

6G Vegetation of wet disturbed soils: **1 - rare occurrence**

7 Acidophilous grasslands

7B Submontane Nardus grasslands: **1 - rare occurrence**

8 Dry grasslands

8D Broad-leaved dry grasslands: **1 - rare occurrence**

8F Thermophilous forest fringe vegetation: **1 - rare occurrence**

11 Heathlands and scrub

11A Dry lowland to subalpine heathlands: **1 - rare occurrence**

11L Tall mesic and xeric shrub: **1 - rare occurrence**

11R Scrub and pioneer woodland of forests clearings: **1 - rare occurrence**

12 Forests

12A Alder carrs: **1 - rare occurrence**

12C Oak-hornbeam forests: **1 - rare occurrence**

12I Sub-continental thermophilous oak forests: **2 - optimum**

12K Acidophilous oak forests: **1 - rare occurrence**

12Q Peatland birch forests: **1 - rare occurrence**

Affinity to the forest environment

Affinity to the forest environment in Thermophyticum: **2.2 - taxon occurring partly in the forest, but mainly in open vegetation**

Affinity to the forest environment in Mesophyticum and Oreophyticum: **2.2 - taxon occurring partly in the forest, but mainly in open vegetation**

Diagnostic taxon

Diagnostic taxon of alliances: [**TDD Molinion caeruleae**](#)

Diagnostic taxon of associations: [**LCB02 Carici fritschii-Quercetum roboris, TDD01 Molinietum caeruleae**](#)

Constant taxon

Constant taxon of alliances: [**TDD Molinion caeruleae**](#)

Constant taxon of associations: [**LCB02 Carici fritschii-Quercetum roboris, TDD01 Molinietum caeruleae**](#)

Dominant taxon

Dominant taxon of associations: [**TDD02 Junco effusi-Molinietum caeruleae**](#)

Ecological specialization indices

Ecological specialization index for all vegetation types: **5.1**

Ecological specialization index for non-forest vegetation: **5.6**

Ecological specialization index for forest vegetation: **4.6**

Colonization ability

Index of colonization success (ICS): **5**
Index of colonization potential (ICP): **4**
Optimum successional age [years]: **25.5**

Distribution and frequency

Floristic zone: **northern temperate, southern temperate, submeridional**
Floristic region: **Europe, Western Asia**
Continentality degree: **5**
Distribution range extension along the continentality gradient: **4**
Elevational belt in the Czech Republic: **lowlands, colline belt, submontane belt**
Occurrence frequency in the basic grid mapping cells and quadrants of the basic grid mapping cells: **543**
taxon.data.freq_in_quad: **1423**
Commonness in vegetation plots from the Czech Republic
Occurrence frequency in vegetation plots: **1.1 %**
Occurrence frequency in vegetation plots with a cover above 5%: **13.4 %**
Occurrence frequency in vegetation plots with a cover above 25%: **1.5 %**
Occurrence frequency in vegetation plots with a cover above 50%: **0 %**
Mean percentage cover in vegetation plots: **3.8 %**
Maximum percentage cover in vegetation plots: **38 %**
Number of habitats with taxon occurrence in the Czech Republic
Number of narrow habitats in which the taxon occurs: **27**
Number of narrow habitats in which the taxon has its optimum: **5**
Number of broad habitats in which the taxon occurs: **7**
Number of broad habitats in which the taxon has its optimum: **3**

Threats and protection

Red List 2017 (national categories): **taxon is not on the Red List**
Red List 2017 (IUCN categories): **LC(NA) - least concern (taxon is not on the Red List)**
Legal protection: **not protected by law**