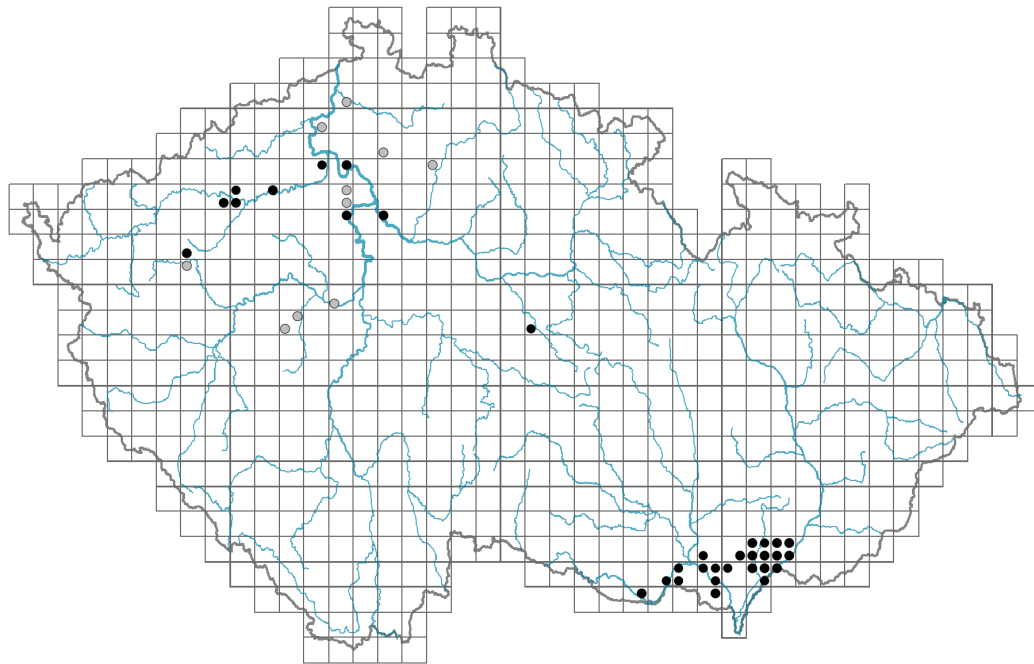


# *Silene viscosa*

## Distribution



© Vladimír Nejšchleba

### Map info

● revised records

● unrevised records

On the map are not visualized records without the coordinates and records marked as incorrect or doubtful.



© Petr Hrbáček



© Vladimír Nejšchleba

## Habitus and growth type

Height [m]: **0.4-1**Growth form: **monocarpic perennial non-clonal herb**Life form: **hemicryptophyte**Life strategy: **CSR - competitor/stress-tolerator/ruderal**

## Leaf

Leaf presence and metamorphosis: **leaves present, not modified**Leaf arrangement (phyllotaxis): **opposite**Leaf shape: **simple - entire**Stipules: **absent**Petiole: **absent**Leaf life span: **evergreen**Leaf anatomy: **mesomorphic, hygromorphic**

## Flower

Flowering period [month]: **June-August**Flower colour: **yellow-white**Flower symmetry: **actinomorphic**Perianth type: **calyx and corolla**Perianth fusion: **free**

Calyx fusion: **synsepalous**  
 Inflorescence type: **panicula e dichasiis composita**  
 Dicliny: **synoecious**  
 Generative reproduction type: **mixed mating**  
 Pollination syndrome: **insect-pollination**

### Fruit, seed and dispersal

Fruit type: **dry fruit - capsule**  
 Fruit colour: **brown**  
 Reproduction type: **only by seed/spores**  
 Dispersal unit (diaspore): **seed**  
 Dispersal strategy: **Allium (mainly autochory)**  
 Myrmecochory: **probably myrmecochorous**

### Belowground organs and clonality

Shoot metamorphosis: **pleiocorm**  
 Root metamorphosis: **primary storage root**  
 Storage organ: **pleiocorm, primary storage root**  
 Shoot life span (cyclicality): **dicyclic or polycyclic shoots prevailing**  
 Primary root: **present**

### Bud bank

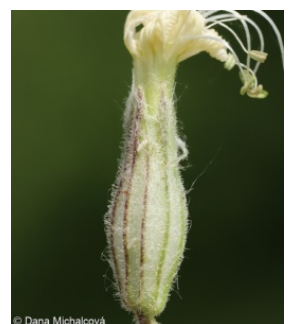
Number of buds per shoot at the soil surface (root buds excluded): **5**  
 Number of buds per shoot at a depth of 0–10 cm (root buds excluded): **15**  
 Number of buds per shoot at a depth greater than 10 cm (root buds excluded): **0**  
 Size of the belowground bud bank (root buds excluded): **20**  
 Depth of the belowground bud bank (root buds excluded) [cm]: **4**  
 Number of buds per shoot at the soil surface (root buds included): **5**  
 Number of buds per shoot at a depth of 0–10 cm (root buds included): **15**  
 Number of buds per shoot at a depth greater than 10 cm (root buds included): **0**  
 Size of the belowground bud bank (root buds included): **20**  
 Depth of the belowground bud bank (root buds included) [cm]: **4**

### Trophic mode

Parasitism and mycoheterotrophy: **autotrophic**  
 Carnivory: **non-carnivorous**  
 Symbiotic nitrogen fixation: **no nitrogen-fixing symbionts**

### Karyology

Chromosome number (2n): **24**  
 Ploidy level (x): **2**  
 2C genome size [Mbp]: **3927.3**  
 1Cx monoploid genome size [Mbp]: **1963.65**  
 Genomic GC content: **40.7 %**



## Taxon origin

Origin in the Czech Republic: **native**

## Ecological indicator values

Ellenberg-type indicator values

Light indicator value: **8 - light plant, only exceptionally occurring at less than 40% of diffuse radiation incident in an open area**

Temperature indicator value: **6 - transition between values 5 and 7**

Moisture indicator value: **3 - missing on damp soil**

Reaction indicator value: **6 - transition between values 5 and 7**

Nutrient indicator value: **3 - occurring at nutrient-poor sites more frequently than at average sites and exceptionally at rich sites**

Salinity indicator value: **0 - not salt tolerant, glycophyte**

## Habitat and sociology

Occurrence in habitats

8 Dry grasslands

8D Broad-leaved dry grasslands: **1 - rare occurrence**

9 Sand grasslands and rock-outcrop vegetation

9C Festuca grasslands on acidic sands: **1 - rare occurrence**

9D Pannonian sand steppes: **2 - optimum**

13 Anthropogenic vegetation

13D Perennial thermophilous ruderal vegetation: **1 - rare occurrence**

Affinity to the forest environment

Affinity to the forest environment in Thermophyticum: **0 - taxon that does not spontaneously occur in Czech forests**

Affinity to the forest environment in Mesophyticum and Oreophyticum: **0 - taxon that does not spontaneously occur in Czech forests**

Diagnostic taxon

Diagnostic taxon of classes: [TG Festucetea vaginatae](#)

Diagnostic taxon of alliances: [TGA Festucion vaginatae](#)

Diagnostic taxon of associations: [TGA01 Diantho serotini-Festucetum vaginatae](#)

Ecological specialization indices

Ecological specialization index for all vegetation types: **5**

Ecological specialization index for non-forest vegetation: **5**

Colonization ability

Index of colonization success (ICS): **1**

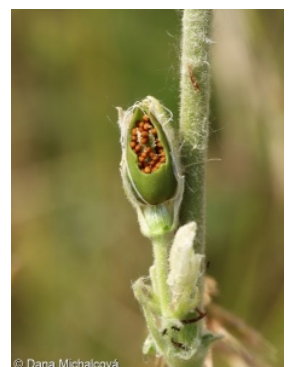
## Distribution and frequency

Floristic zone: **boreal, northern temperate, southern temperate, submeridional, meridional**

Floristic region: **Europe**

Continental degree: **8**

Distribution range extension along the continentality gradient: **5**



Elevational belt in the Czech Republic: **lowlands, colline belt**

Occurrence frequency in the basic grid mapping cells and quadrants of the basic grid mapping cells: 40

taxon.data.freq\_in\_quad: 63

Commonness in vegetation plots from the Czech Republic

Occurrence frequency in vegetation plots: **0 %**

Occurrence frequency in vegetation plots with a cover above 5%: **16.7 %**

Occurrence frequency in vegetation plots with a cover above 25%: **0 %**

Occurrence frequency in vegetation plots with a cover above 50%: **0 %**

Mean percentage cover in vegetation plots: **3.7 %**

Maximum percentage cover in vegetation plots: **13 %**

Number of habitats with taxon occurrence in the Czech Republic

Number of narrow habitats in which the taxon occurs: **4**

Number of narrow habitats in which the taxon has its optimum: **1**

Number of broad habitats in which the taxon occurs: **3**

Number of broad habitats in which the taxon has its optimum: **1**

### Threats and protection

Red List 2017 (national categories): **C1t - critically threatened taxon, declining**

Red List 2017 (IUCN categories): **CR - critically endangered**

Legal protection: **not protected by law**

