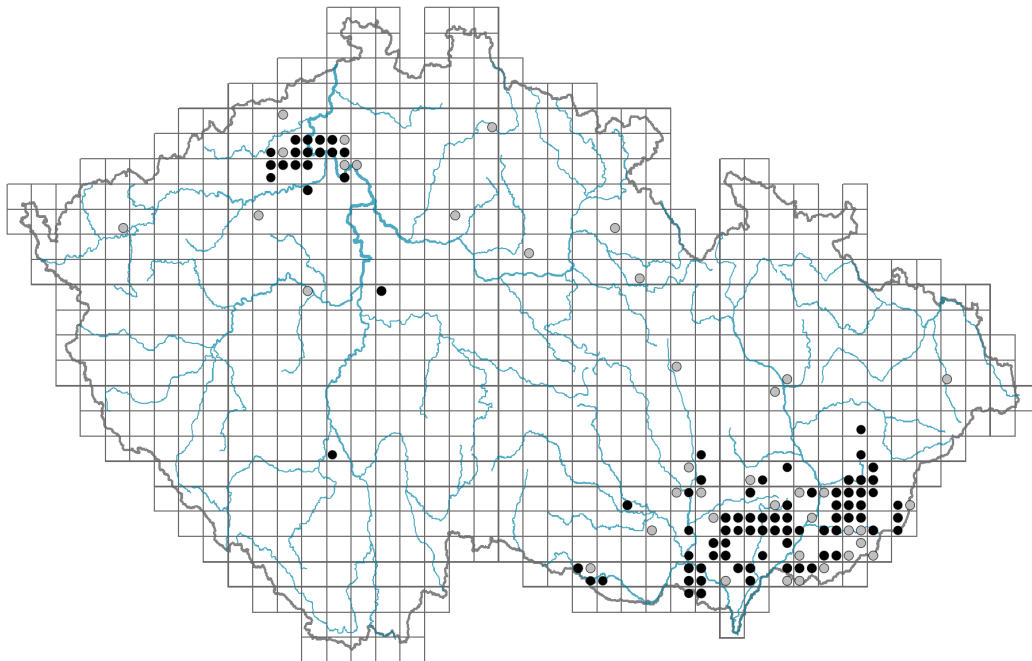


# *Sorbus domestica*

## Distribution



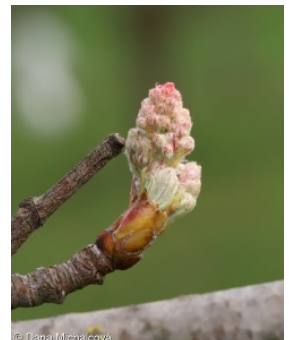
© Pavel Veselý

### Map info

● revised records

○ unrevised records

On the map are not visualized records without the coordinates and records marked as incorrect or doubtful.



© Dana Michalčová



© Dana Michalčová



© Dana Michalčová

## Habitus and growth type

Height [m]: **8-20**

Growth form: **tree**

Life form: **macrophanerophyte**

Life strategy: **C - competitor**

## Leaf

Leaf presence and metamorphosis: **leaves present, not modified**

Leaf arrangement (phyllotaxis): **alternate**

Leaf shape: **compound - imparipinnate**

Stipules: **present**

Petiole: **present**

Leaf life span: **summer green**

Leaf deciduousness in woody plants: **winter deciduous**

Leaf anatomy: **scleromorphic, mesomorphic**

Functional leaf type in woody plants: **broad deciduous or semi-deciduous**

## Flower

Flowering period [month]: **May**

Flowering phase: **5 Sorbus aucuparia-Galium odoratum (end of mid-spring)**

Flower colour: **white**

Flower symmetry: **actinomorphic**  
 Perianth type: **calyx and corolla**  
 Perianth fusion: **free**  
 Calyx fusion: **hypanthium**  
 Inflorescence type: **corymbothyrus**  
 Dicliny: **synoecious**  
 Generative reproduction type: **facultative allogamy**  
 Pollination syndrome: **insect-pollination, selfing**

### Fruit, seed and dispersal

Fruit type: **fleshy fruit - pome**  
 Fruit colour: **yellow, orange, red**  
 Reproduction type: **by seed/spores and vegetatively**  
 Dispersal unit (diaspore): **seed, fruit, infructescence or its part**  
 Dispersal strategy: **Cornus (mainly autochory and endozoochory)**  
 Myrmecochory: **non-myrmecochorous (b)**

### Belowground organs and clonality

Root metamorphosis: **root shoot**  
 Position of root buds: **lateral roots**  
 Role of root buds in life-history of a plant: **additive**

#### Bud bank

Number of buds per shoot at the soil surface (root buds excluded): **0**  
 Number of buds per shoot at a depth of 0–10 cm (root buds excluded): **0**  
 Number of buds per shoot at a depth greater than 10 cm (root buds excluded): **0**  
 Size of the belowground bud bank (root buds excluded): **0**  
 Number of buds per shoot at the soil surface (root buds included): **0**  
 Number of buds per shoot at a depth of 0–10 cm (root buds included): **15**  
 Number of buds per shoot at a depth greater than 10 cm (root buds included): **15**  
 Size of the belowground bud bank (root buds included): **30**  
 Depth of the belowground bud bank (root buds included) [cm]: **10**

### Trophic mode

Parasitism and mycoheterotrophy: **autotrophic**  
 Carnivory: **non-carnivorous**  
 Symbiotic nitrogen fixation: **no nitrogen-fixing symbionts**

### Taxon origin

Origin in the Czech Republic: **archaeophyte**  
 Invasion status: **naturalized**  
 Geographic origin: **Europe, Mediterranean**  
 Period of introduction: **Early Middle Ages (550-1200)**  
 Introduction pathway: **intentional - nature, intentional - crops**



## Ecological indicator values

### Ellenberg-type indicator values

Light indicator value: **4 - transition between values 3 and 5**

Temperature indicator value: **7 - heat indicator, occurring in relatively warm lowlands**

Moisture indicator value: **4 - transition between values 3 and 5**

Reaction indicator value: **8 - transition between values 7 and 9, occurring mostly in calcium-rich conditions**

Nutrient indicator value: **5 - occurring at moderately nutrient-rich sites, and less frequently at poor and rich sites**

Salinity indicator value: **0 - not salt tolerant, glycophyte**

## Habitat and sociology

### Occurrence in habitats

11 Heathlands and scrub

11L Tall mesic and xeric shrub: **1 - rare occurrence**

12 Forests

12H Peri-Alpidic basiphilous thermophilous oak forests: **1 - rare occurrence**

12I Sub-continental thermophilous oak forests: **2 - optimum**

12U Plantations of broad-leaved non-native trees: **1 - rare occurrence**

### Affinity to the forest environment

Affinity to the forest environment in Thermophyticum: **0 - taxon that does not spontaneously occur in Czech forests**

Affinity to the forest environment in Mesophyticum and Oreophyticum: **0 - taxon that does not spontaneously occur in Czech forests**

### Diagnostic taxon

Diagnostic taxon of alliances: [LCB \*Aceri tatarici-Quercion\*](#)

Diagnostic taxon of associations: [LCB01 \*Quercetum pubescenti-roboris\*](#)

### Ecological specialization indices

Ecological specialization index for all vegetation types: **5.3**

## Distribution and frequency

Floristic zone: **southern temperate, submeridional, meridional**

Floristic region: **Europe**

Continental degree: **4**

Distribution range extension along the continentality gradient: **2**

Occurrence frequency in the basic grid mapping cells and quadrants of the basic grid mapping cells: **75**

taxon.data.freq\_in\_quad: **127**

### Commonness in vegetation plots from the Czech Republic

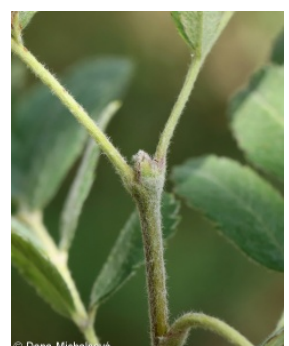
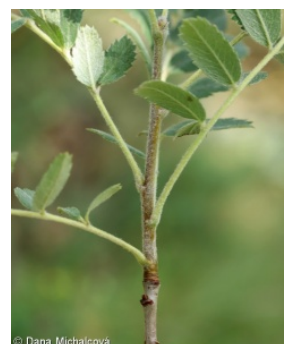
Occurrence frequency in vegetation plots: **0 %**

Occurrence frequency in vegetation plots with a cover above 5%: **33.3 %**

Occurrence frequency in vegetation plots with a cover above 25%: **0 %**

Occurrence frequency in vegetation plots with a cover above 50%: **0 %**

Mean percentage cover in vegetation plots: **5.7 %**



Maximum percentage cover in vegetation plots: **13 %**

Number of habitats with taxon occurrence in the Czech Republic

Number of narrow habitats in which the taxon occurs: **4**

Number of narrow habitats in which the taxon has its optimum: **1**

Number of broad habitats in which the taxon occurs: **2**

Number of broad habitats in which the taxon has its optimum: **1**



### **Threats and protection**

Red List 2017 (national categories): **taxon is not on the Red List**

Red List 2017 (IUCN categories): **LC(NA) - least concern (taxon is not on the Red List)**

Legal protection: **not protected by law**