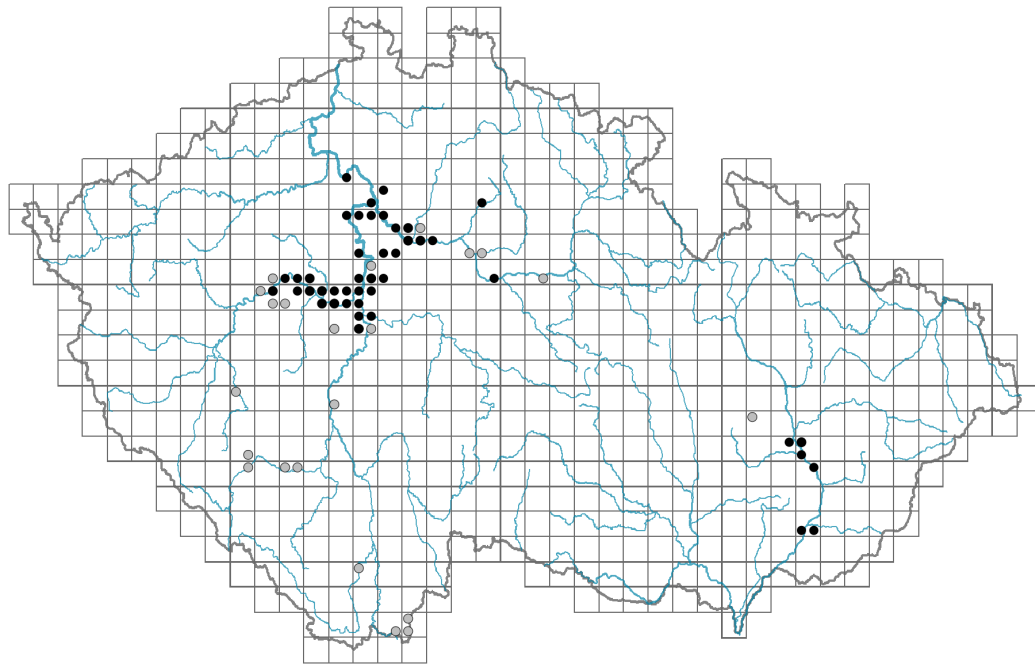


# *Stellaria neglecta*

## Distribution

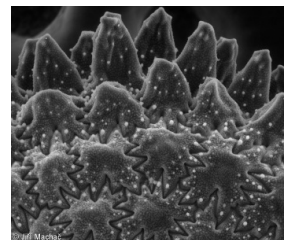


### Map info

● revised records

● unrevised records

On the map are not visualized records without the coordinates and records marked as incorrect or doubtful.



## Habitus and growth type

Height [m]: **0.2-0.8**

Growth form: **clonal herb**

Life form: **therophyte (hemicryptophyte)**

Life strategy: **CSR - competitor/stress-tolerator/ruderal**

Life strategy (Pierce method based on leaf traits): **R/CR**

Life strategy (Pierce method, C-score): **18.8 %**

Life strategy (Pierce method, S-score): **0 %**

Life strategy (Pierce method, R-score): **81.2 %**

## Leaf

Leaf presence and metamorphosis: **leaves present, not modified**

Leaf arrangement (phyllotaxis): **opposite**

Leaf shape: **simple - entire**

Stipules: **absent**

Petiole: **both present and absent**

Leaf life span: **evergreen**

Leaf anatomy: **hygromorphic**

## Flower

Flowering period [month]: **April-June**

Flower colour: **white**  
Flower symmetry: **actinomorphic**  
Perianth type: **calyx and corolla**  
Perianth fusion: **free**  
Calyx fusion: **aposepalous**  
Inflorescence type: **dichasium**  
Dicliny: **synoecious**  
Generative reproduction type: **autogamy**  
Pollination syndrome: **selfing**

### **Fruit, seed and dispersal**

Fruit type: **dry fruit - capsule**  
Fruit colour: **brown**  
Reproduction type: **mostly by seed/spores, rarely vegetatively**  
Dispersal unit (diaspore): **seed**  
Dispersal strategy: **Allium (mainly autochory)**  
Myrmecochory: **non-myrmecochorous (a)**

### **Belowground organs and clonality**

Shoot metamorphosis: **stolon**  
Storage organ: **stolon**  
Type of clonal growth organ: **stolon**  
Freely dispersible organs of clonal growth: **absent**  
Shoot life span (cyclicity): **monocyclic shoots prevailing**  
Branching type of stem-derived organs of clonal growth: **sympodial**  
Primary root: **absent**  
Persistence of the clonal growth organ [year]: **1.5**  
Number of clonal offspring: **3.5**  
Lateral spreading distance by clonal growth [m]: **0.13**  
Clonal index: **5**  
Bud bank  
Number of buds per shoot at the soil surface (root buds excluded): **15**  
Number of buds per shoot at a depth of 0-10 cm (root buds excluded): **0**  
Number of buds per shoot at a depth greater than 10 cm (root buds excluded): **0**  
Size of the belowground bud bank (root buds excluded): **15**  
Depth of the belowground bud bank (root buds excluded) [cm]: **1**  
Number of buds per shoot at the soil surface (root buds included): **15**  
Number of buds per shoot at a depth of 0-10 cm (root buds included): **0**  
Number of buds per shoot at a depth greater than 10 cm (root buds included): **0**  
Size of the belowground bud bank (root buds included): **15**  
Depth of the belowground bud bank (root buds included) [cm]: **1**

### **Trophic mode**

Parasitism and mycoheterotrophy: **autotrophic**  
Carnivory: **non-carnivorous**  
Symbiotic nitrogen fixation: **no nitrogen-fixing symbionts**

## Taxon origin

Origin in the Czech Republic: **native**

## Ecological indicator values

Ellenberg-type indicator values

Light indicator value: **6 - transition between values 5 and 7; rarely at less than 20% of diffuse radiation incident in an open area**

Temperature indicator value: **6x - transition between values 5 and 7 (generalist)**

Moisture indicator value: **5x - indicator of fresh soils, focus on soils of average moisture, missing on wet and on soils that frequently dry out (generalist)**

Reaction indicator value: **6 - transition between values 5 and 7**

Nutrient indicator value: **7 - occurring at nutrient-rich sites more often than at average sites and only exceptionally at poor sites**

Salinity indicator value: **1 - salt tolerant, mostly on low-salt to salt-free soils, but occasionally on slightly salty soils**

## Habitat and sociology

Occurrence in habitats

1 Vegetation of cliffs, screes and walls

1A Calcareous cliffs: **1 - rare occurrence**

5 Vegetation of springs and mires

5B Lowland to montane soft-water springs: **1 - rare occurrence**

11 Heathlands and scrub

11J Willow galleries of loamy and sandy river banks: **1 - rare occurrence**

12 Forests

12B Alluvial forests: **2 - optimum**

12C Oak-hornbeam forests: **1 - rare occurrence**

12D Ravine forests: **2 - optimum**

12E Herb-rich beech forests: **1 - rare occurrence**

12T Robinia pseudacacia plantations: **1 - rare occurrence**

12U Plantations of broad-leaved non-native trees: **1 - rare occurrence**

13 Anthropogenic vegetation

13E Perennial nitrophilous herbaceous vegetation of mesic sites: **2 - optimum**

13F Herbaceous vegetation of forests clearings and Rubus scrub: **1 - rare occurrence**

Affinity to the forest environment

Affinity to the forest environment in Thermophyticum: **1.2 - taxon occurring mainly along forest edges and in forest openings, including forest roads and paths, windthrow sites, burnt sites and forest clearings**

Affinity to the forest environment in Mesophyticum and Oreophyticum: **1.2 - taxon occurring mainly along forest edges and in forest openings, including forest roads and paths, windthrow sites, burnt sites and forest clearings**

## Distribution and frequency

Floristic zone: **northern temperate, southern temperate, submeridional,**

## **meridional**

Floristic region: **Europe**

Distribution range extension along the continentality gradient: **6**

Elevational belt in the Czech Republic: **lowlands, colline belt**

Occurrence frequency in the basic grid mapping cells and quadrants of the basic grid mapping cells: **42**

taxon.data.freq\_in\_quad: **67**

Number of habitats with taxon occurrence in the Czech Republic

Number of narrow habitats in which the taxon occurs: **11**

Number of narrow habitats in which the taxon has its optimum: **3**

Number of broad habitats in which the taxon occurs: **5**

Number of broad habitats in which the taxon has its optimum: **2**

## **Threats and protection**

Red List 2017 (national categories): **C3 - vulnerable taxon**

Red List 2017 (IUCN categories): **NT - near threatened**

Legal protection: **not protected by law**