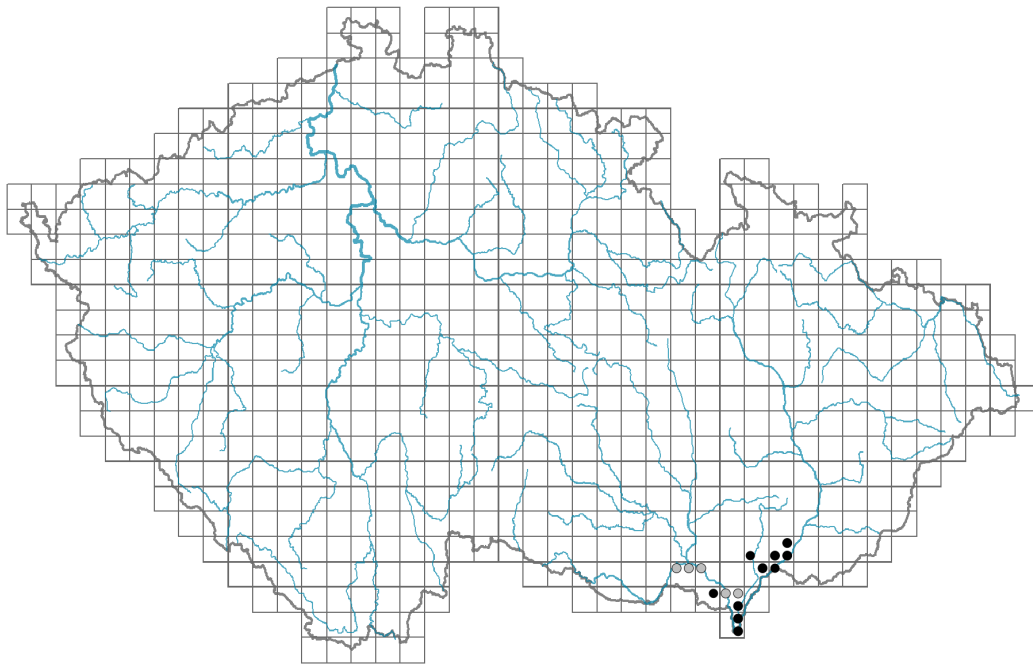


# *Stipa borysthenica*

## Distribution



### Map info

● revised records

● unrevised records

On the map are not visualized records without the coordinates and records marked as incorrect or doubtful.



## Habitus and growth type

Height [m]: **0.3-0.6**

Growth form: **clonal herb**

Life form: **hemicryptophyte**

Life strategy: **CS - competitor/stress-tolerator**

## Leaf

Leaf presence and metamorphosis: **leaves present, not modified**

Leaf arrangement (phyllotaxis): **alternate**

Leaf shape: **simple - entire**

Stipules: **absent**

Petiole: **absent**

Leaf life span: **summer green**

Leaf anatomy: **scleromorphic**



## Flower

Flowering period [month]: **May-June**

Flower colour: **green**

Perianth type: **reduced**

Perianth fusion: **reduced**

Inflorescence type: **spica e spiculis composita**

Dicliny: **synoecious**

Generative reproduction type: **mixed mating**

Pollination syndrome: **wind-pollination, selfing, cleistogamy**

## Fruit, seed and dispersal

Fruit type: **dry fruit - caryopsis**

Fruit colour: **white, brown**

Reproduction type: **mostly by seed/spores, rarely vegetatively**

Dispersal unit (diaspore): **fruit, infrutescence or its part**

Dispersal strategy: **Bidens (mainly autochory and epizoochory)**

Myrmecochory: **non-myrmecochorous (b)**

## Belowground organs and clonality

Storage organ: **tuft**

## Trophic mode

Parasitism and mycoheterotrophy: **autotrophic**

Carnivory: **non-carnivorous**

Symbiotic nitrogen fixation: **no nitrogen-fixing symbionts**

## Karyology

Chromosome number (2n): **44**

Ploidy level (x): **4**

2C genome size [Mbp]: **2462.74**

1Cx monoploid genome size [Mbp]: **615.68**

Genomic GC content: **47.2 %**

## Taxon origin

Origin in the Czech Republic: **native**

## Ecological indicator values

Ellenberg-type indicator values

Light indicator value: **9 - full light plant, occurring only in fully irradiated places, not at less than 50% of diffuse radiation incident in an open area**

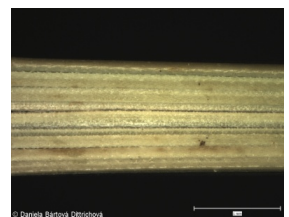
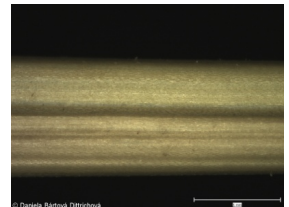
Temperature indicator value: **7 - heat indicator, occurring in relatively warm lowlands**

Moisture indicator value: **2 - transition between values 1 and 3**

Reaction indicator value: **5 - indicator of moderate acidity, occurring rarely in strongly acidic as well as in neutral to alkaline conditions**

Nutrient indicator value: **2 - transition between values 1 and 3**

Salinity indicator value: **0 - not salt tolerant, glycophyte**



## Habitat and sociology

Occurrence in habitats

8 Dry grasslands

8E Acidophilous dry grasslands: **2 - optimum**

9 Sand grasslands and rock-outcrop vegetation

9B Open vegetation of acidic sands: **1 - rare occurrence**

9C Festuca grasslands on acidic sands: **2 - optimum**

9D Pannonian sand steppes: **2 - optimum**

Affinity to the forest environment

Affinity to the forest environment in Thermophyticum: **0 - taxon that does not spontaneously occur in Czech forests**

Affinity to the forest environment in Mesophyticum and Oreophyticum: **0 - taxon that does not spontaneously occur in Czech forests**

Diagnostic taxon

Diagnostic taxon of associations: [TFC02 \*Erysimo diffusi-Agrostietum capillaris\*](#)

Ecological specialization indices

Ecological specialization index for all vegetation types: **6.4**

Ecological specialization index for non-forest vegetation: **6.3**

Colonization ability

Index of colonization success (ICS): **1**

## Distribution and frequency

Continental degree: **8**

Distribution range extension along the continentality gradient: **5**

Elevational belt in the Czech Republic: **lowlands, colline belt**

Occurrence frequency in the basic grid mapping cells and quadrants of the basic grid mapping cells: **9**

taxon.data.freq\_in\_quad: 15

Commonness in vegetation plots from the Czech Republic

Occurrence frequency in vegetation plots: **0 %**

Occurrence frequency in vegetation plots with a cover above 5%: **50 %**

Occurrence frequency in vegetation plots with a cover above 25%: **33.3 %**

Occurrence frequency in vegetation plots with a cover above 50%: **16.7 %**

Mean percentage cover in vegetation plots: **20.5 %**

Maximum percentage cover in vegetation plots: **63 %**

Number of habitats with taxon occurrence in the Czech Republic

Number of narrow habitats in which the taxon occurs: **4**

Number of narrow habitats in which the taxon has its optimum: **3**

Number of broad habitats in which the taxon occurs: **2**

Number of broad habitats in which the taxon has its optimum: **2**

## Threats and protection

Red List 2017 (national categories): **C1b - critically threatened taxon, rare and declining**



Red List 2017 (IUCN categories): **EN - endangered**

Legal protection: **critically threatened taxon**

