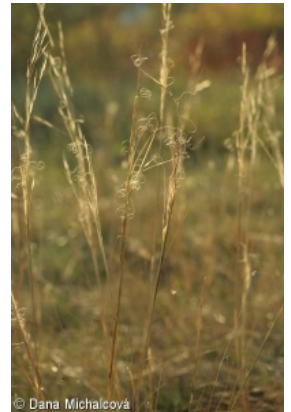
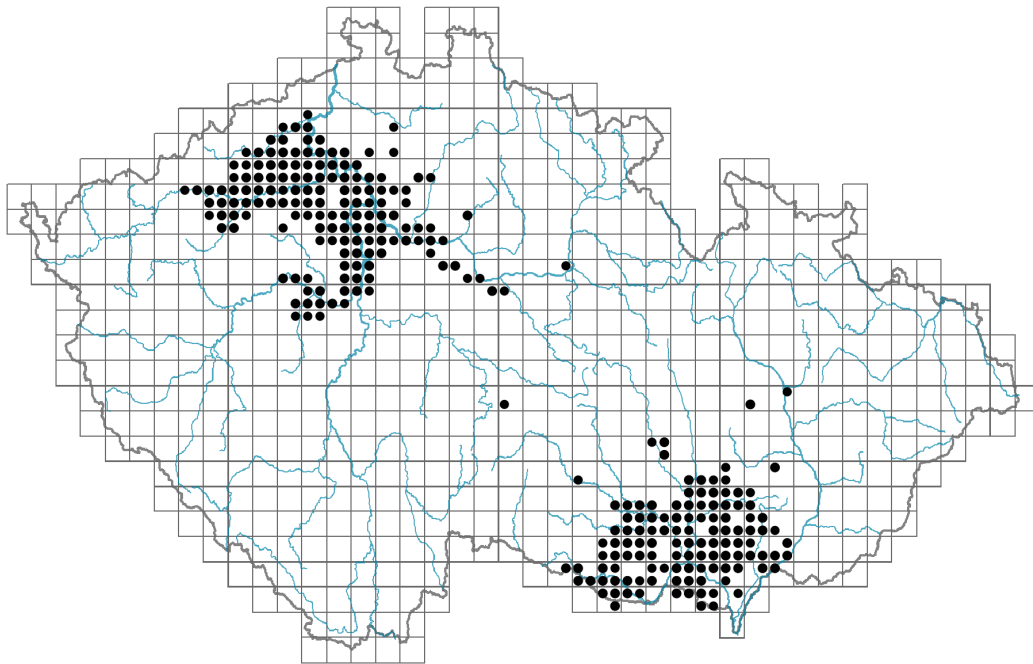


Stipa capillata

Distribution



© Dana Michalcová

Map info

● revised records

● unrevised records

On the map are not visualized records without the coordinates and records marked as incorrect or doubtful.

Habitus and growth type

Height [m]: **0.3-1**

Growth form: **clonal herb**

Life form: **hemicryptophyte**

Life strategy: **CS - competitor/stress-tolerator**

Life strategy (Pierce method based on leaf traits): **S**

Life strategy (Pierce method, C-score): **10.5 %**

Life strategy (Pierce method, S-score): **89.5 %**

Life strategy (Pierce method, R-score): **0 %**



© Dana Michalcová

Leaf

Leaf presence and metamorphosis: **leaves present, not modified**

Leaf arrangement (phyllotaxis): **alternate**

Leaf shape: **simple - entire**

Stipules: **absent**

Petiole: **absent**

Leaf life span: **summer green**

Leaf anatomy: **scleromorphic**

Flower

Flowering period [month]: **July-August**



© Miroslav Chytrý

Flowering phase: **8 Clematis vitalba-Galium sylvaticum (mid-summer)**

Flower colour: **green**

Perianth type: **reduced**

Perianth fusion: **reduced**

Inflorescence type: **spica e spiculis composita**

Dicliny: **synoecious**

Generative reproduction type: **facultative autogamy**

Pollination syndrome: **wind-pollination, cleistogamy**

Fruit, seed and dispersal

Fruit type: **dry fruit - caryopsis**

Fruit colour: **brown**

Reproduction type: **mostly by seed/spores, rarely vegetatively**

Dispersal unit (diaspore): **fruit, infrutescence or its part**

Dispersal strategy: **Bidens (mainly autochory and epizoochory)**

Myrmecochory: **non-myrmecochorous (b)**

Belowground organs and clonality

Storage organ: **tuft**

Type of clonal growth organ: **epigeogenous rhizome**

Freely dispersible organs of clonal growth: **absent**

Shoot life span (cyclicity): **dicyclic or polycyclic shoots prevailing**

Branching type of stem-derived organs of clonal growth: **sympodial**

Primary root: **absent**

Persistence of the clonal growth organ [year]: **4**

Number of clonal offspring: **2.7**

Lateral spreading distance by clonal growth [m]: **0.01**

Clonal index: **3**

Bud bank

Number of buds per shoot at the soil surface (root buds excluded): **5**

Number of buds per shoot at a depth of 0–10 cm (root buds excluded): **12**

Number of buds per shoot at a depth greater than 10 cm (root buds excluded): **0**

Size of the belowground bud bank (root buds excluded): **17**

Depth of the belowground bud bank (root buds excluded) [cm]: **4**

Number of buds per shoot at the soil surface (root buds included): **5**

Number of buds per shoot at a depth of 0–10 cm (root buds included): **12**

Number of buds per shoot at a depth greater than 10 cm (root buds included): **0**

Size of the belowground bud bank (root buds included): **17**

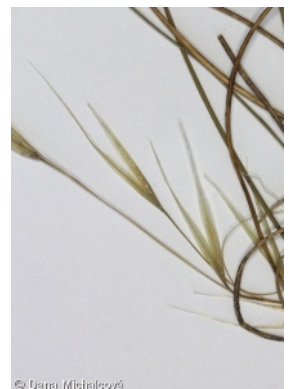
Depth of the belowground bud bank (root buds included) [cm]: **4**

Trophic mode

Parasitism and mycoheterotrophy: **autotrophic**

Carnivory: **non-carnivorous**

Symbiotic nitrogen fixation: **no nitrogen-fixing symbionts**



Karyology

Chromosome number (2n): **44**

Ploidy level (x): **4**

2C genome size [Mbp]: **2355.2**

1Cx monoploid genome size [Mbp]: **588.8**

Genomic GC content: **47.5 %**

Taxon origin

Origin in the Czech Republic: **native**

Ecological indicator values

Ellenberg-type indicator values

Light indicator value: **9 - full light plant, occurring only in fully irradiated places, not at less than 50% of diffuse radiation incident in an open area**

Temperature indicator value: **7 - heat indicator, occurring in relatively warm lowlands**

Moisture indicator value: **2 - transition between values 1 and 3**

Reaction indicator value: **8 - transition between values 7 and 9, occurring mostly in calcium-rich conditions**

Nutrient indicator value: **2 - transition between values 1 and 3**

Salinity indicator value: **0 - not salt tolerant, glycophyte**

Indicator values for disturbance

Whole-community disturbance frequency indicator value: **-0.56**

Herb layer disturbance frequency indicator value: **-0.3**

Whole-community disturbance severity indicator value: **0.22**

Herb layer disturbance severity indicator value: **0.26**

Whole-community structure based disturbance indicator value: **0.52**

Herb layer structure-based disturbance indicator value: **0.6**

Habitat and sociology

Occurrence in habitats

1 Vegetation of cliffs, screes and walls

1D Mobile calcareous screes: **1 - rare occurrence**

8 Dry grasslands

8A Hercynian dry grasslands on rock outcrops: **2 - optimum**

8B Submediterranean dry grasslands on rock outcrops: **1 - rare occurrence**

8C Narrow-leaved sub-continental steppes: **3 - dominant**

8D Broad-leaved dry grasslands: **1 - rare occurrence**

8E Acidophilous dry grasslands: **1 - rare occurrence**

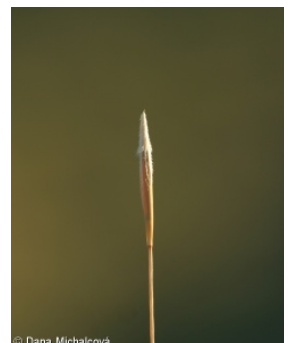
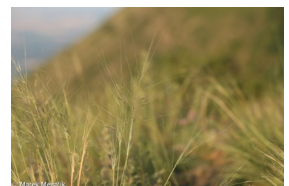
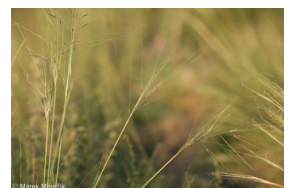
8F Thermophilous forest fringe vegetation: **1 - rare occurrence**

9 Sand grasslands and rock-outcrop vegetation

9B Open vegetation of acidic sands: **1 - rare occurrence**

9C Festuca grasslands on acidic sands: **1 - rare occurrence**

9E Acidophilous vegetation of spring therophytes and succulents: **1 - rare occurrence**



9F Basiphilous vegetation of spring therophytes and succulents: **1 - rare occurrence**

11 Heathlands and scrub

11N Low xeric scrub: **1 - rare occurrence**

12 Forests

12H Peri-Alpidic basiphilous thermophilous oak forests: **1 - rare occurrence**

12J Acidophilous thermophilous oak forests: **1 - rare occurrence**

12O Peri-Alpidic pine forests: **1 - rare occurrence**

12T Robinia pseudacacia plantations: **1 - rare occurrence**

12W Pine and larch plantations: **1 - rare occurrence**

13 Anthropogenic vegetation

13D Perennial thermophilous ruderal vegetation: **1 - rare occurrence**

Affinity to the forest environment

Affinity to the forest environment in Thermophyticum: **0 - taxon that does not spontaneously occur in Czech forests**

Affinity to the forest environment in Mesophyticum and Oreophyticum: **0 - taxon that does not spontaneously occur in Czech forests**

Diagnostic taxon

Diagnostic taxon of classes: [TH Festuco-Brometea](#)

Diagnostic taxon of alliances: [THB Bromo pannonici-Festucion pallentis](#), [THD Festucion valesiaca](#), [XCD Artemisio-Kochion prostratae](#)

Diagnostic taxon of associations: [LCA02 Lithospermo purpureocaerulei-Quercetum pubescentis](#), [TFF01 Cerastietum](#), [THB01 Poo badensis-Festucetum pallentis](#), [THD01 Festuco valesiaca-Stipetum capillatae](#), [THD02 Erysimo crepidifolii-Festucetum valesiaca](#), [THD04 Koelerio macranthae-Stipetum joannis](#), [THG02 Avenulo pratensis-Festucetum valesiaca](#), [XCD01 Agropyro cristati-Kochietum prostratae](#)

Constant taxon

Constant taxon of alliances: [THB Bromo pannonici-Festucion pallentis](#), [THD Festucion valesiaca](#), [XCD Artemisio-Kochion prostratae](#)

Constant taxon of associations: [THB01 Poo badensis-Festucetum pallentis](#), [THD01 Festuco valesiaca-Stipetum capillatae](#), [THD02 Erysimo crepidifolii-Festucetum valesiaca](#), [THG02 Avenulo pratensis-Festucetum valesiaca](#), [XCD01 Agropyro cristati-Kochietum prostratae](#)

Dominant taxon

Dominant taxon of associations: [THD01 Festuco valesiaca-Stipetum capillatae](#), [XCD01 Agropyro cristati-Kochietum prostratae](#)

Ecological specialization indices

Ecological specialization index for all vegetation types: **5.3**

Ecological specialization index for non-forest vegetation: **5.3**

Ecological specialization index for forest vegetation: **5.1**

Colonization ability

Index of colonization success (ICS): **4**

Index of colonization potential (ICP): **3**

Optimum successional age [years]: **47.5**

Distribution and frequency

Floristic zone: **northern temperate, southern temperate, submeridional,**



meridional

Floristic region: **Europe, Asia**

Continentality degree: **7**

Distribution range extension along the continentality gradient: **6**

Elevational belt in the Czech Republic: **lowlands, colline belt**

Occurrence frequency in the basic grid mapping cells and quadrants of the basic grid mapping cells: **119**

taxon.data.freq_in_quad: **288**

Commonness in vegetation plots from the Czech Republic

Occurrence frequency in vegetation plots: **0.8 %**

Occurrence frequency in vegetation plots with a cover above 5%: **37 %**

Occurrence frequency in vegetation plots with a cover above 25%: **28.6 %**

Occurrence frequency in vegetation plots with a cover above 50%: **11.3 %**

Mean percentage cover in vegetation plots: **16.7 %**

Maximum percentage cover in vegetation plots: **88 %**

Number of habitats with taxon occurrence in the Czech Republic

Number of narrow habitats in which the taxon occurs: **18**

Number of narrow habitats in which the taxon has its optimum: **2**

Number of broad habitats in which the taxon occurs: **6**

Number of broad habitats in which the taxon has its optimum: **1**

Threats and protection

Red List 2017 (national categories): **C4a - near threatened taxon**

Red List 2017 (IUCN categories): **NT - near threatened**

Legal protection: **not protected by law**